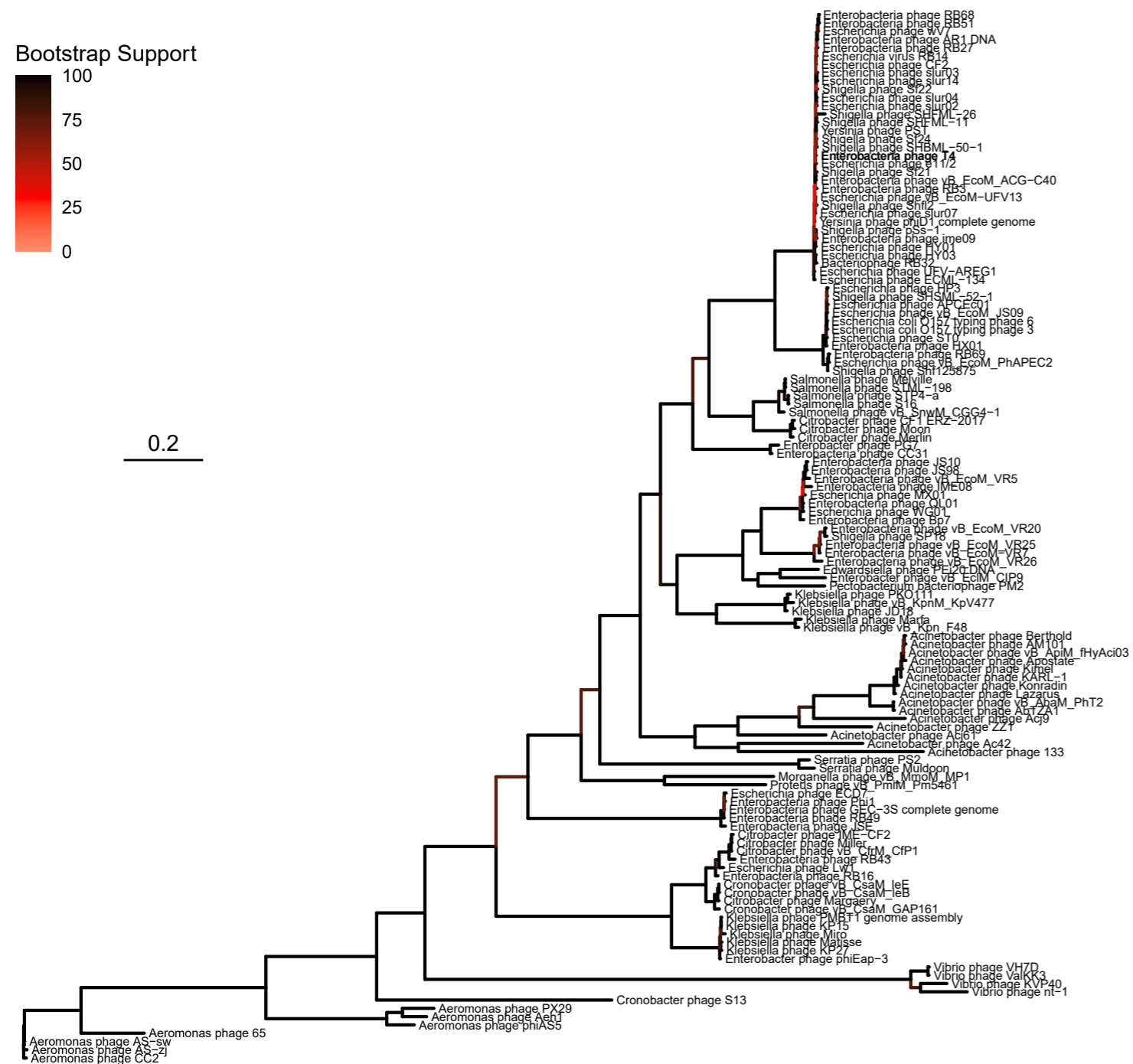
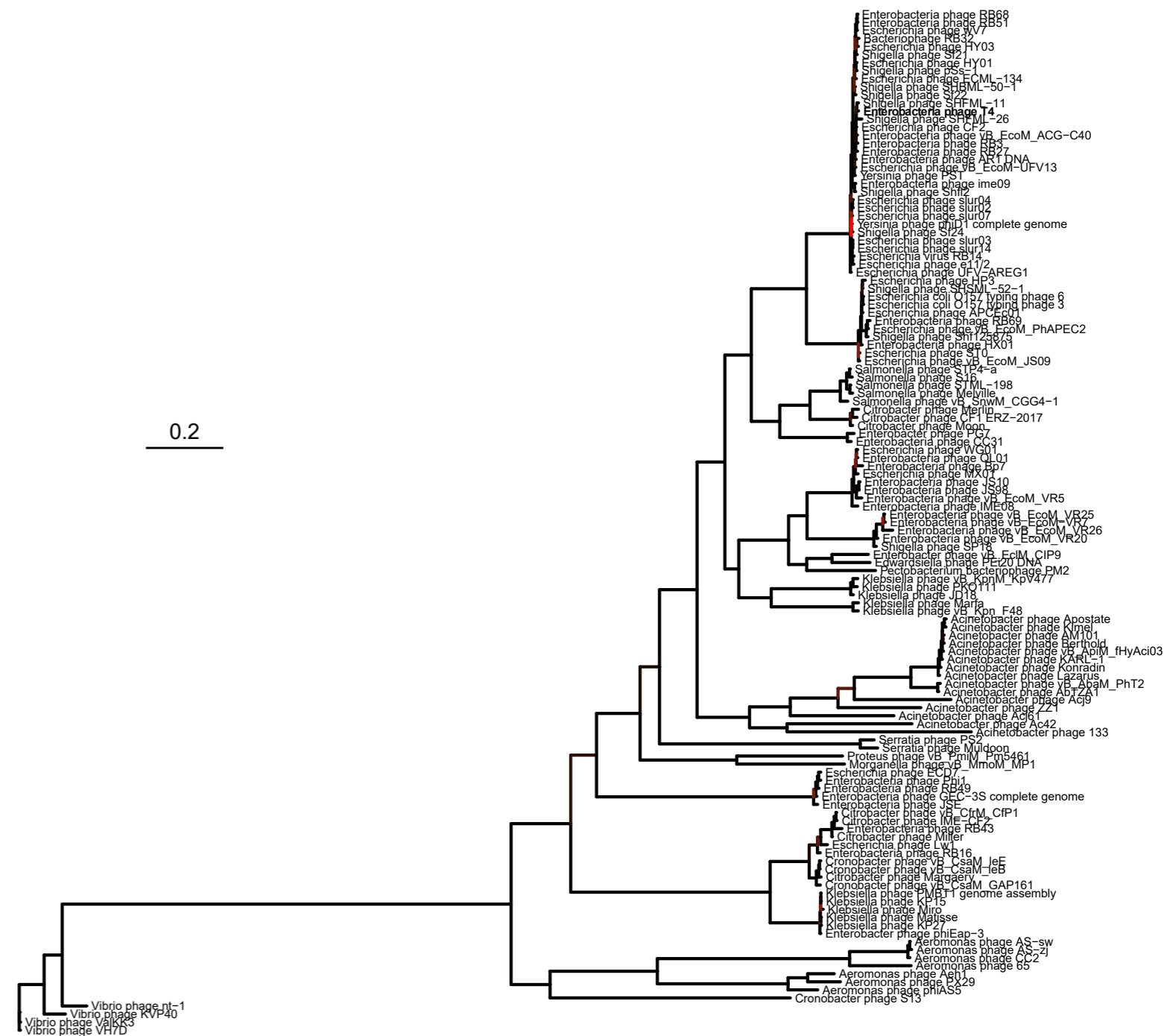


**A****Before Rephine.r****B****After Rephine.r**

**Supplemental Figure 4.** Phylogeny of Tevenvirinae before and after running Rephine.r, with all tips labeled by the corresponding RefSeq phage name. The type phage T4 is shown in bold. Bootstrap support is shown by coloring branches preceding nodes, with low support (from 0 to 70) ranging from white to red.