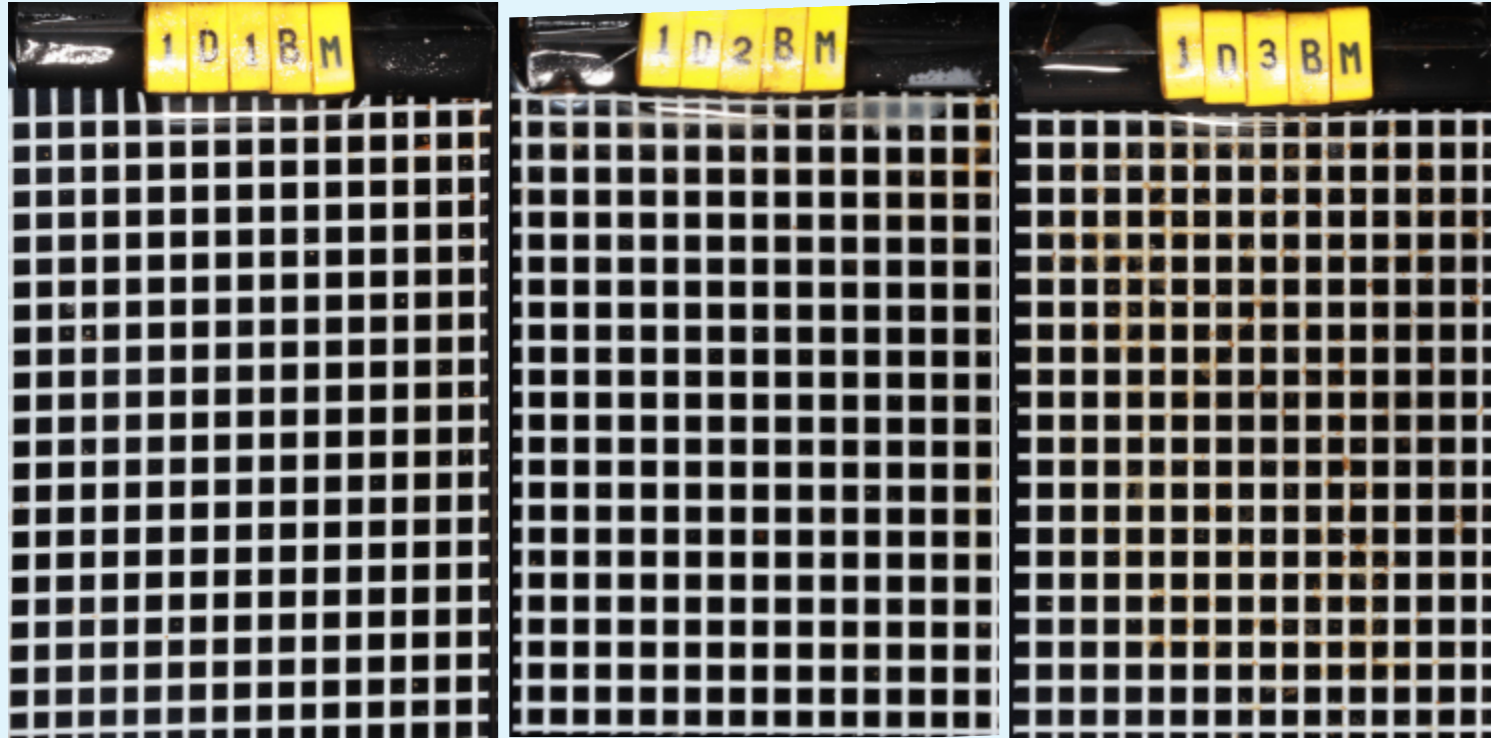


A)

Performance of *Mater-Bi* on all 4 sediments after 4 months

Marina di Campo



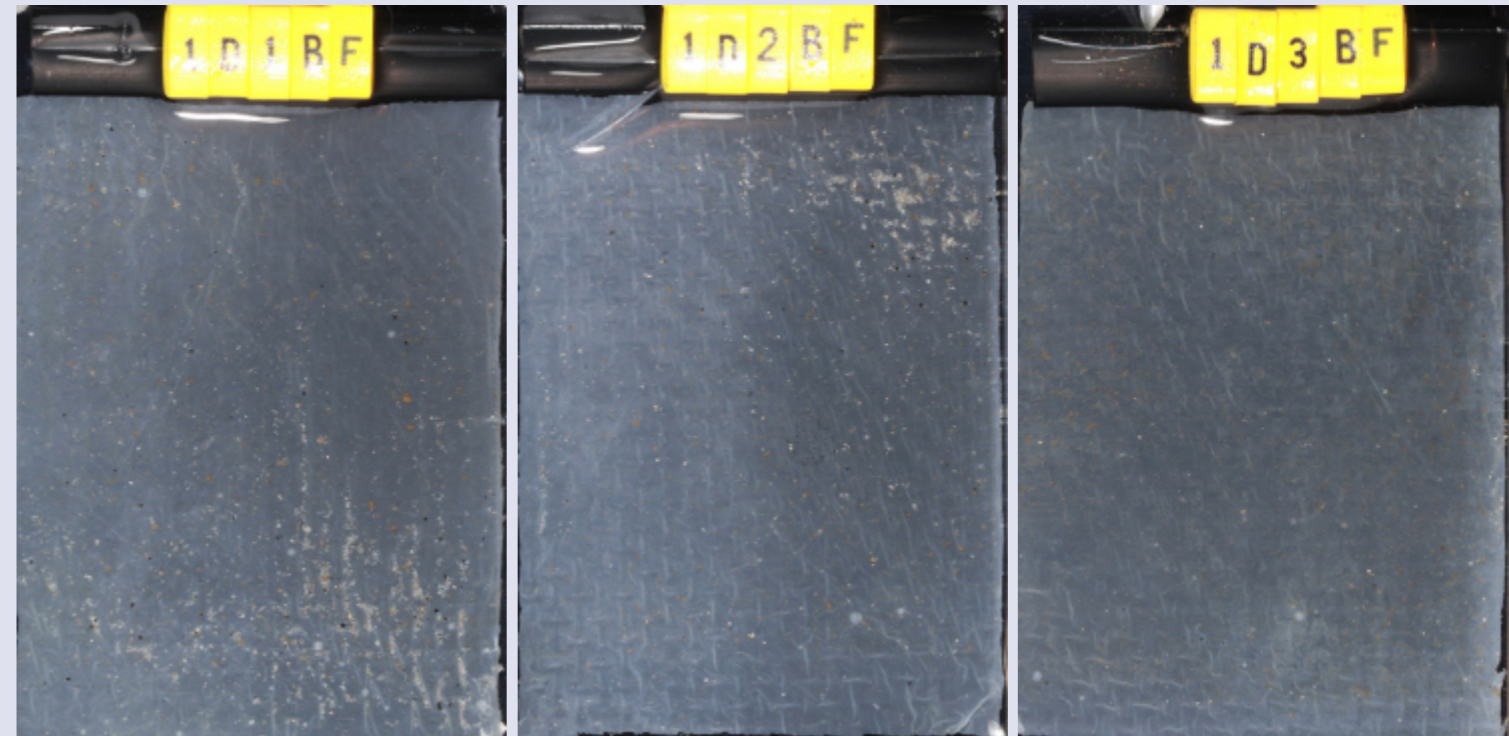
Portoferraio



Naregno



Fetovaia

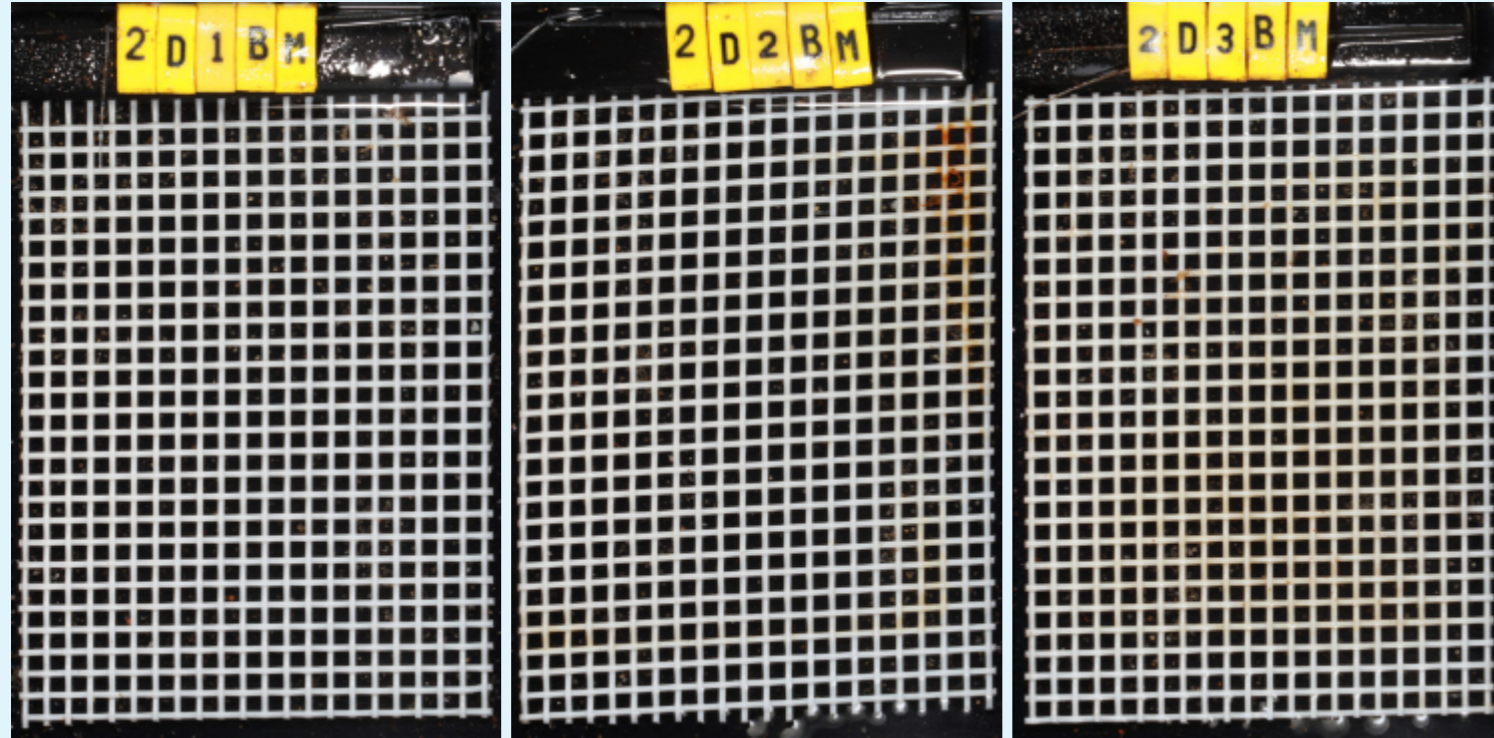




B)

Performance of *Mater-Bi* on all 4 sediments after 6 months

Marina di Campo



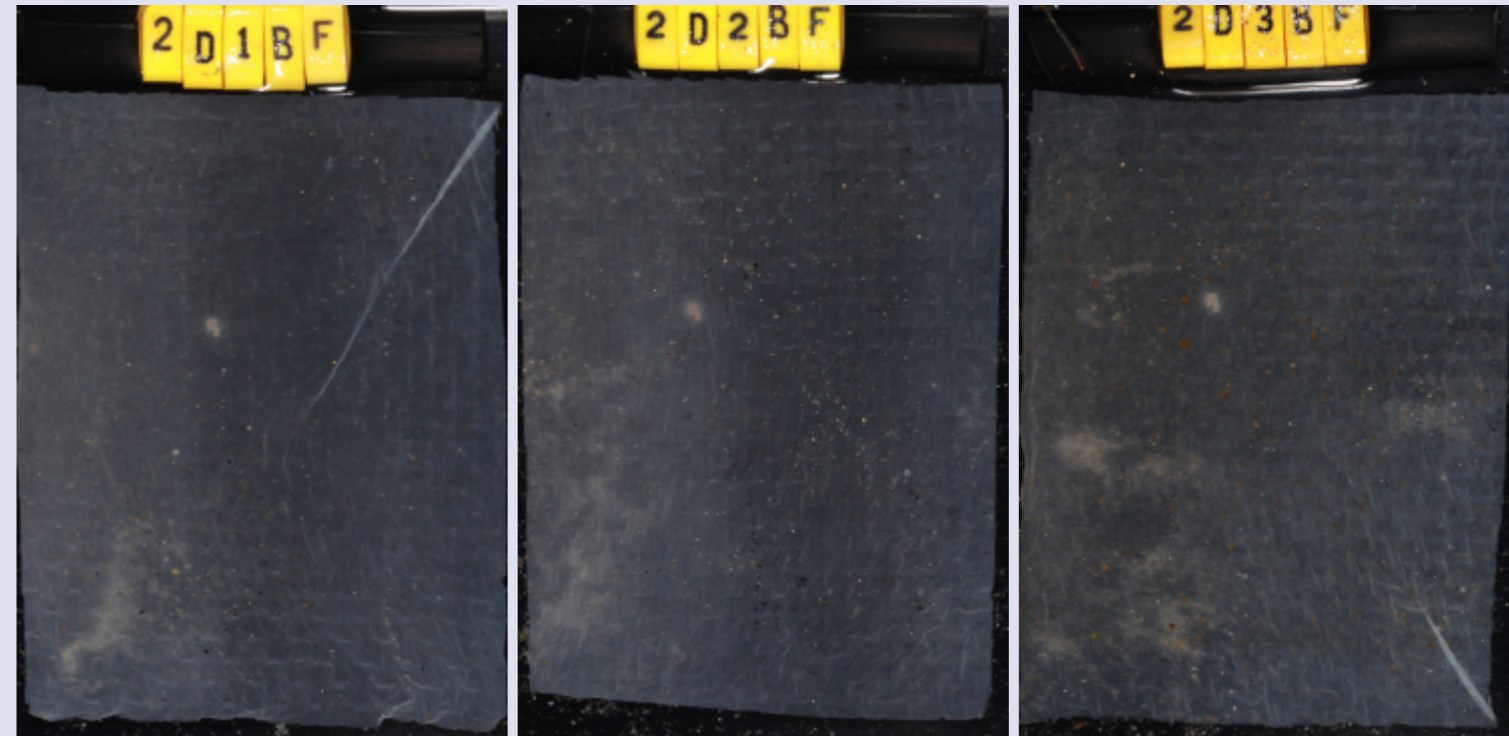
Portoferraio



Naregno



Fetovaia



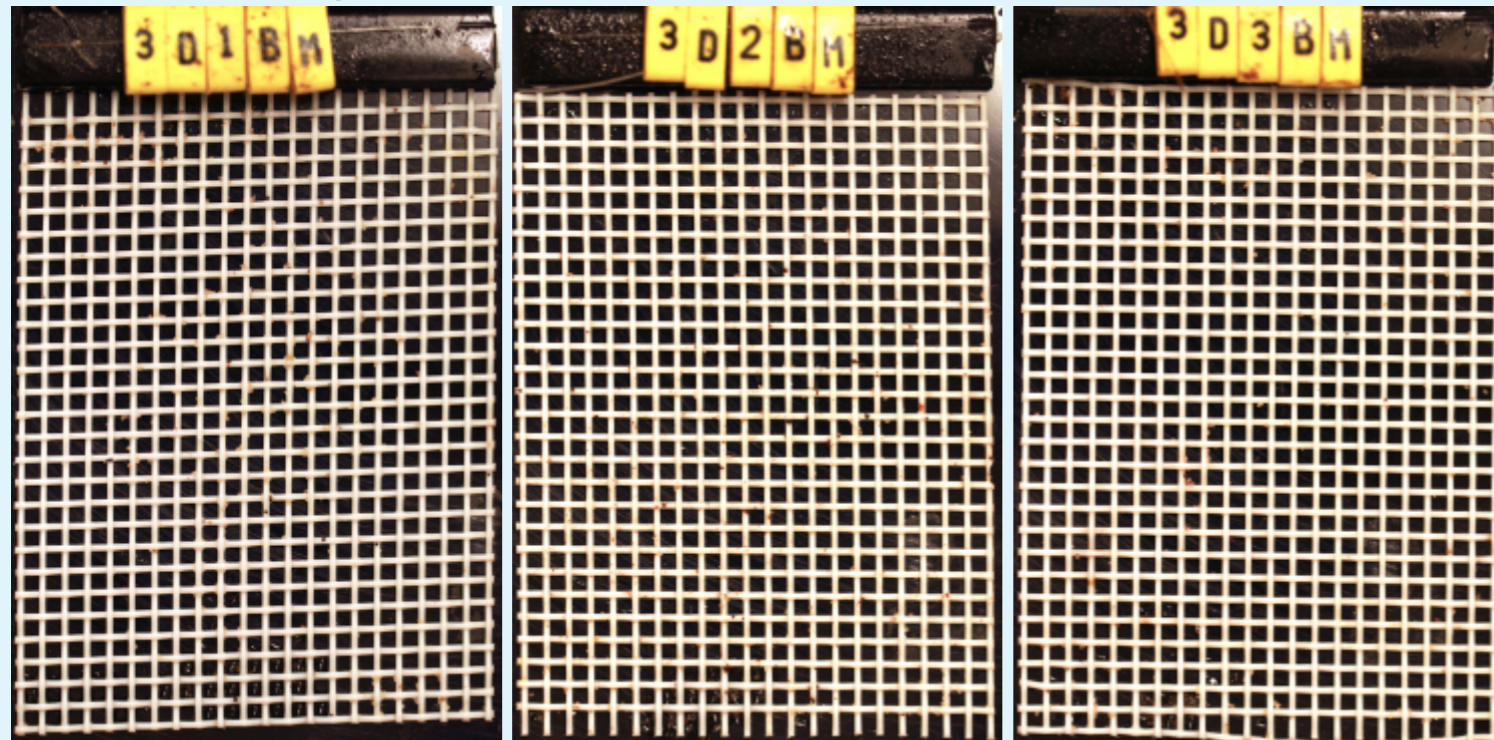
\*Specimen 2D2BN adhering to both meshes.  
See pages 36–37 for details.



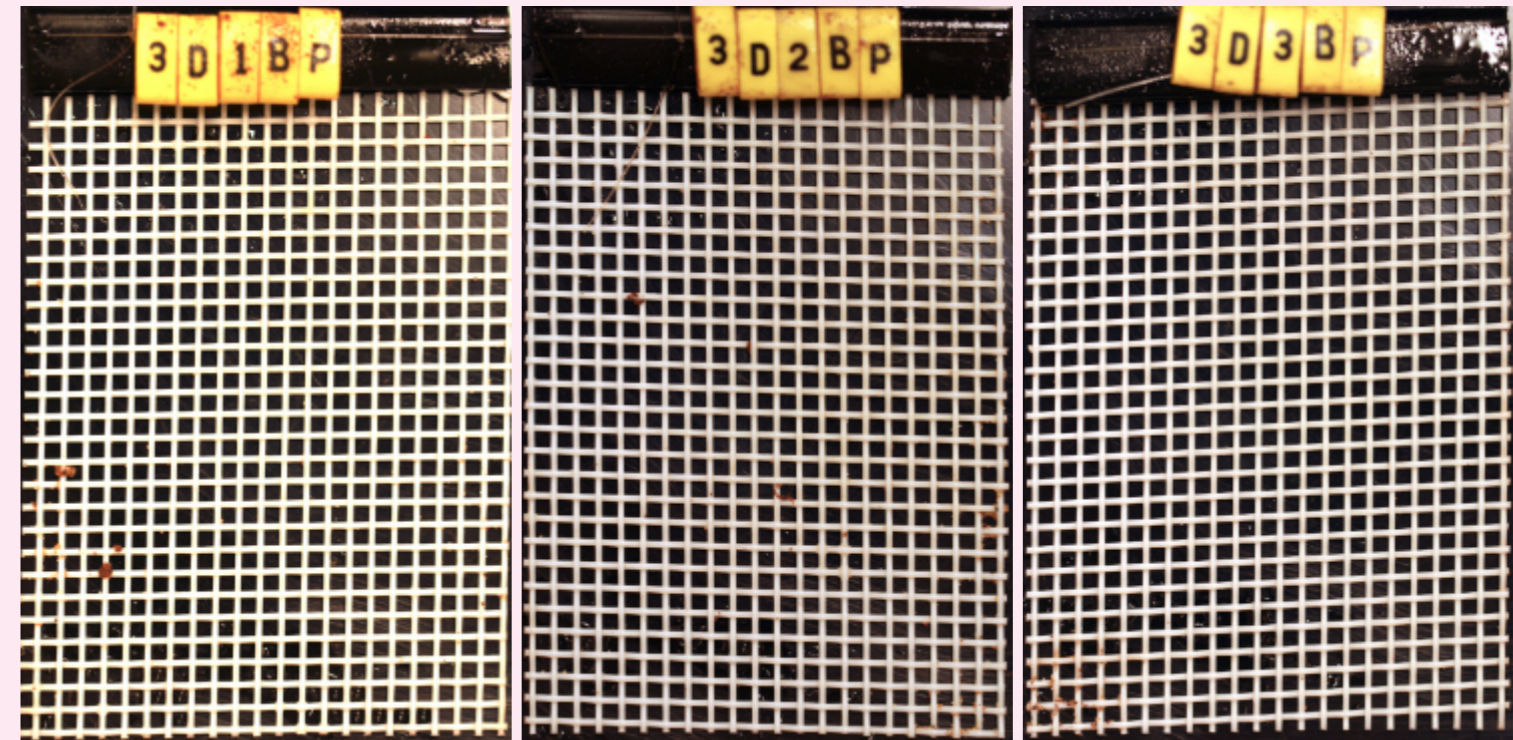
C)

Performance of *Mater-Bi* on 3 sediments after 8 months, and on 1 sediment after 12 months

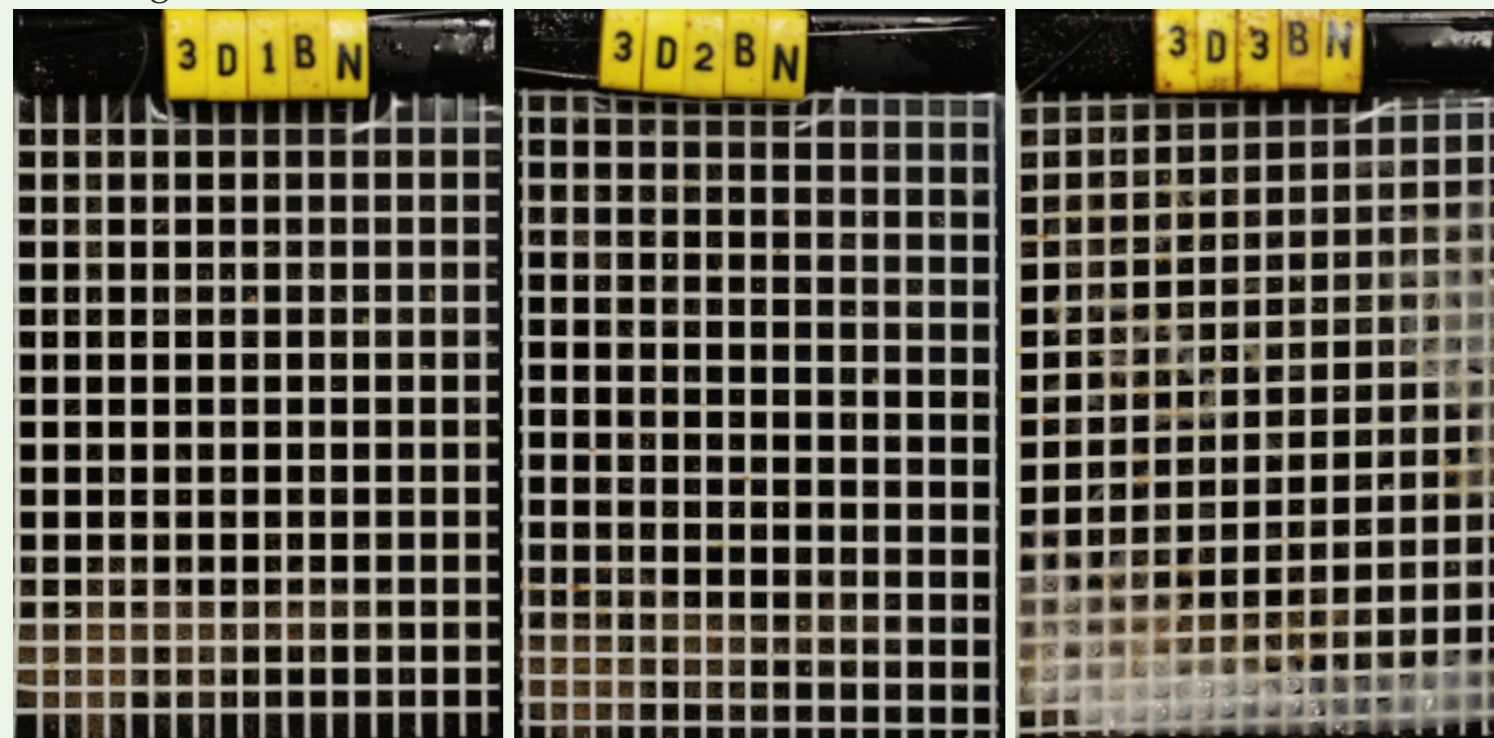
Marina di Campo



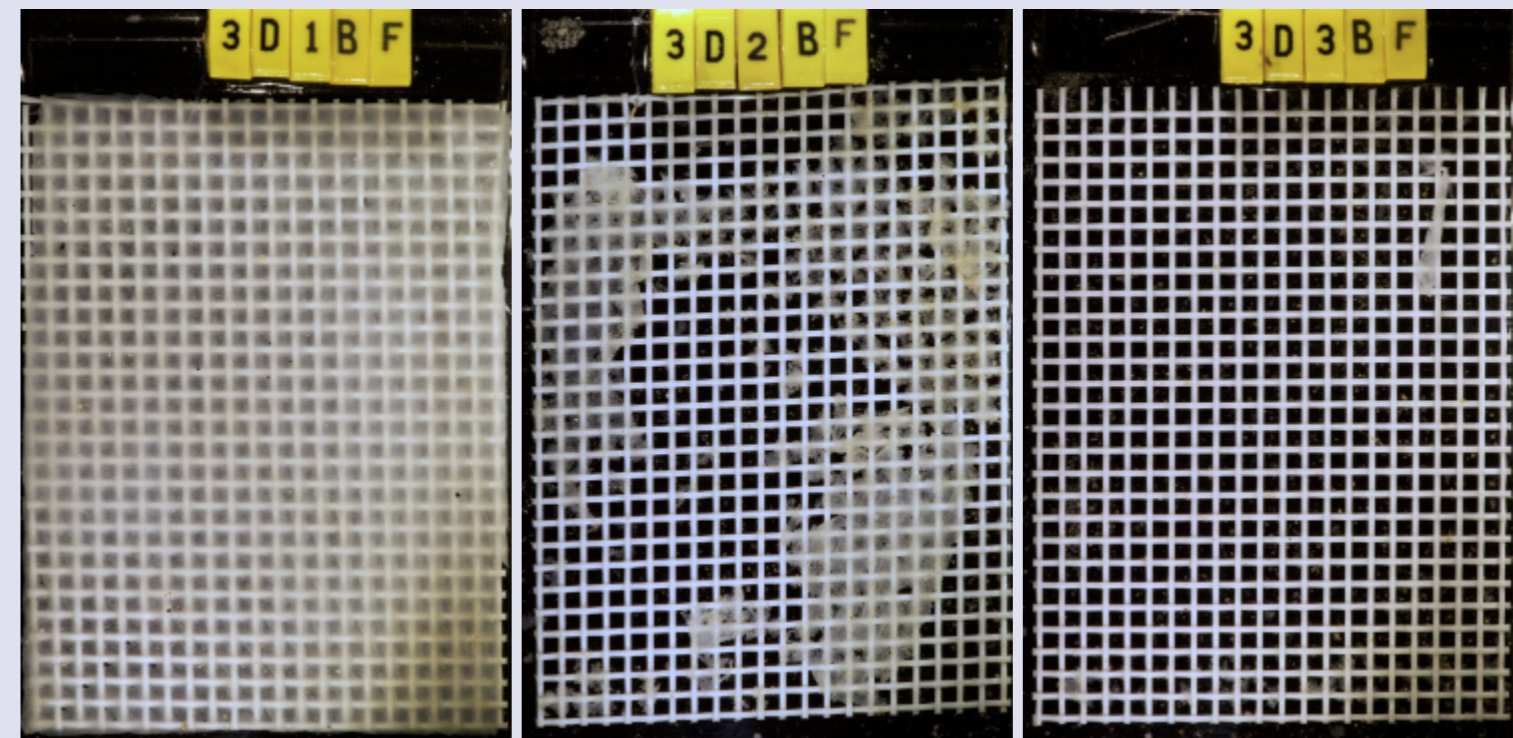
Portoferraio



Naregno



Fetovaia

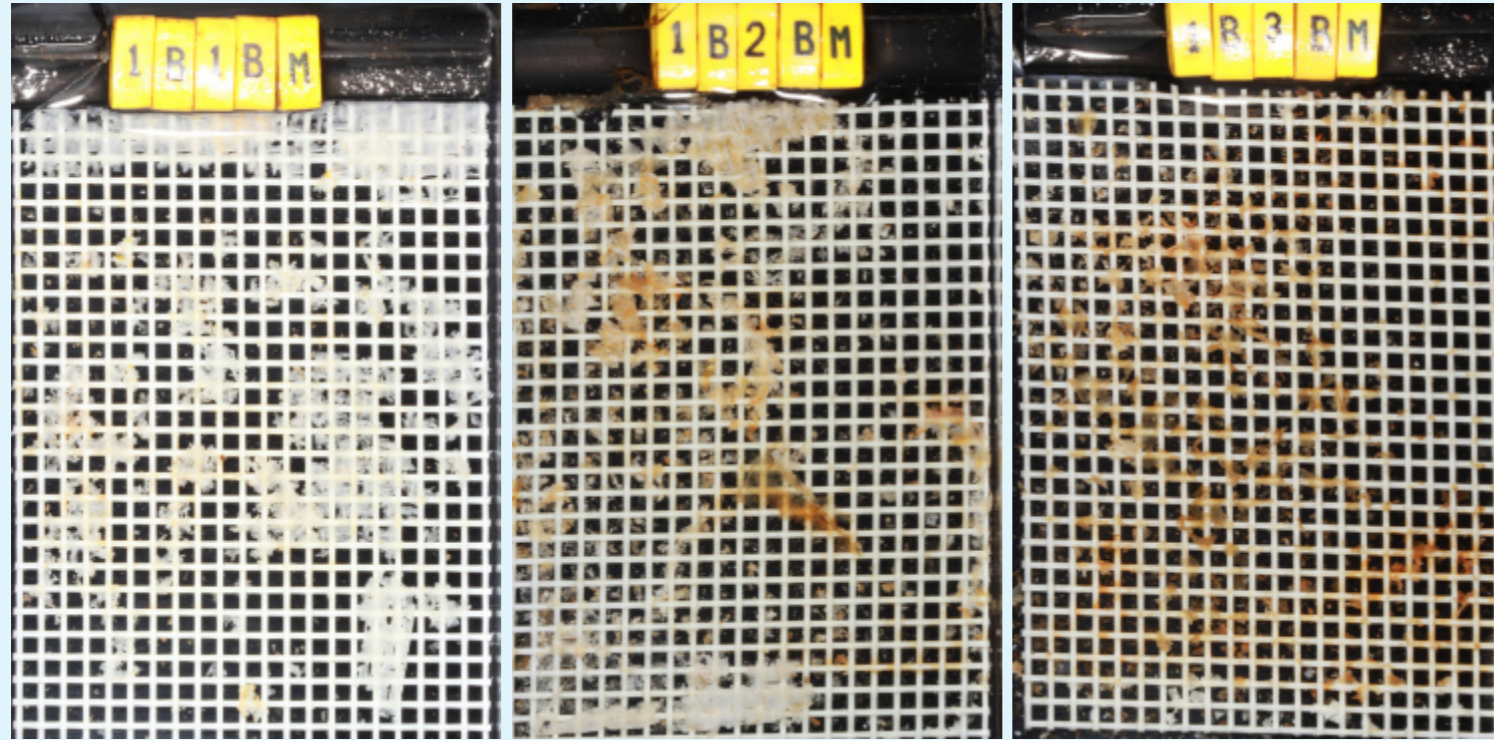




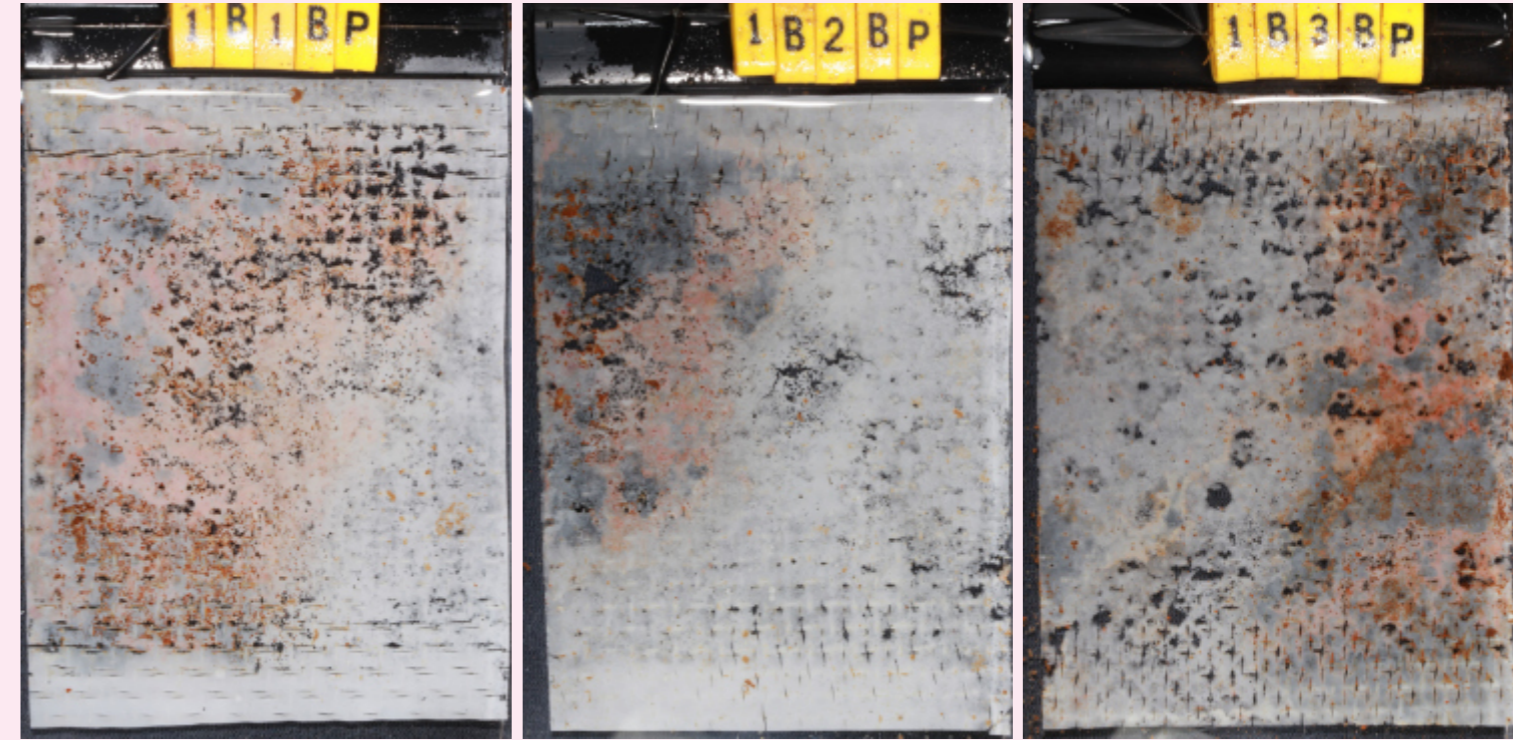
D)

Performance of *PHB* 85  $\mu\text{m}$  on all 4 sediments after 4 months

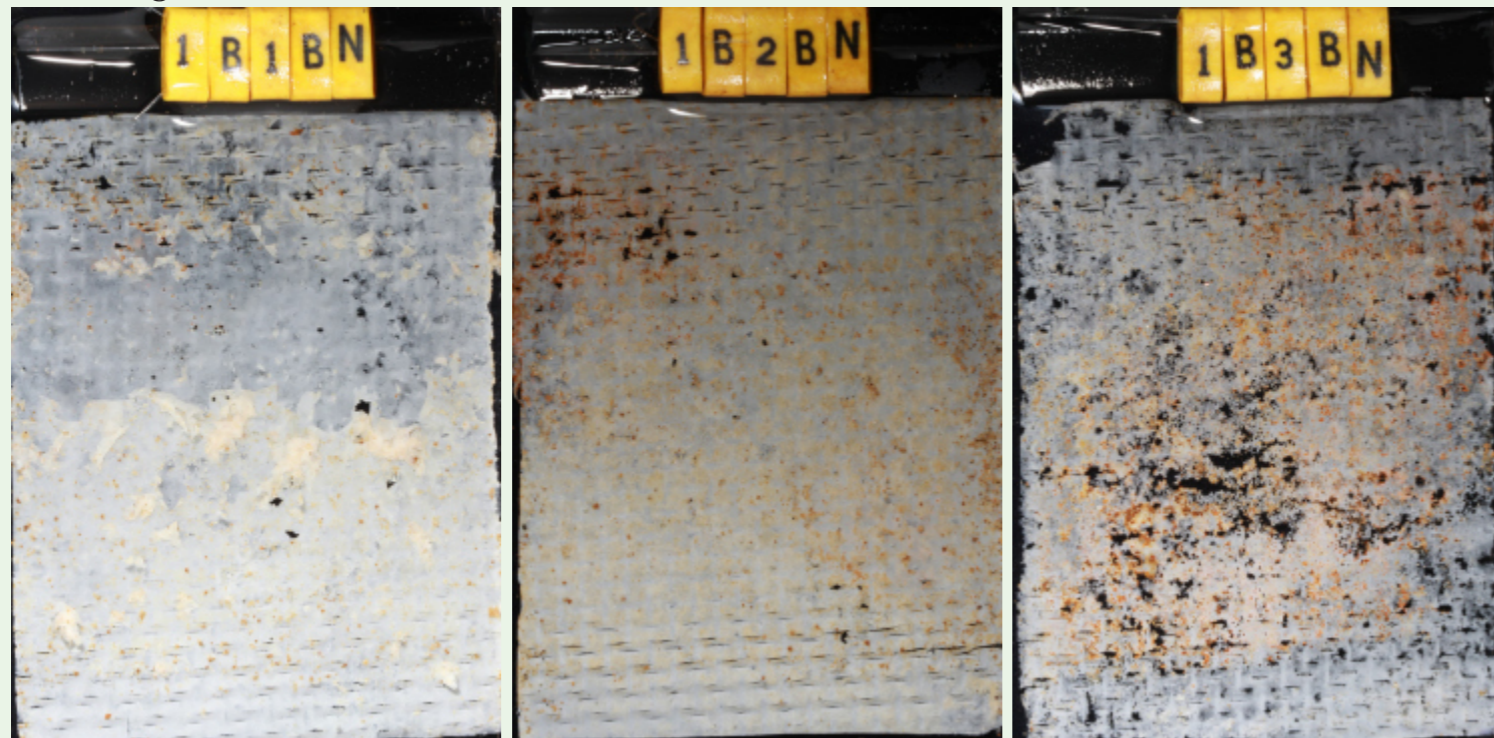
Marina di Campo



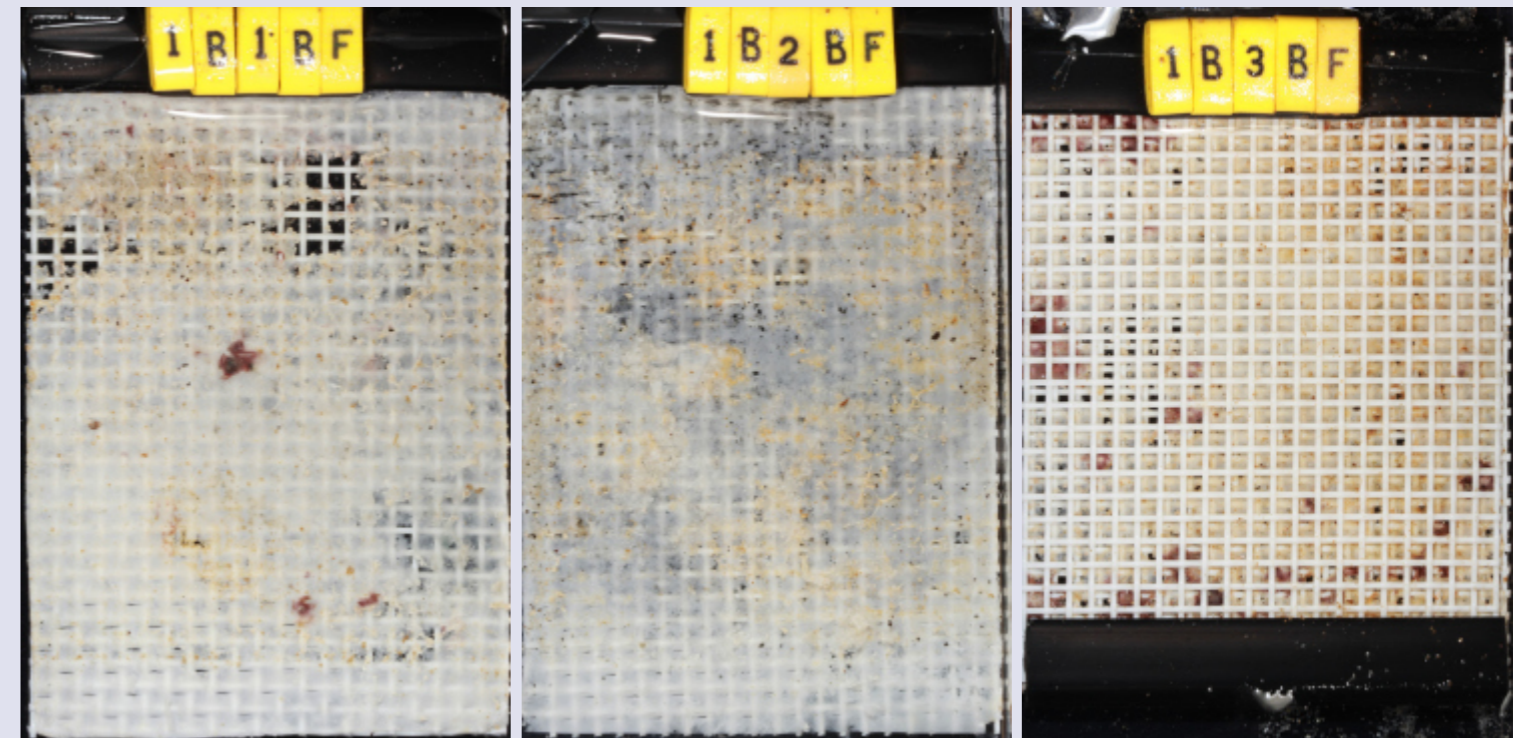
Portoferraio



Naregno



Fetovaia

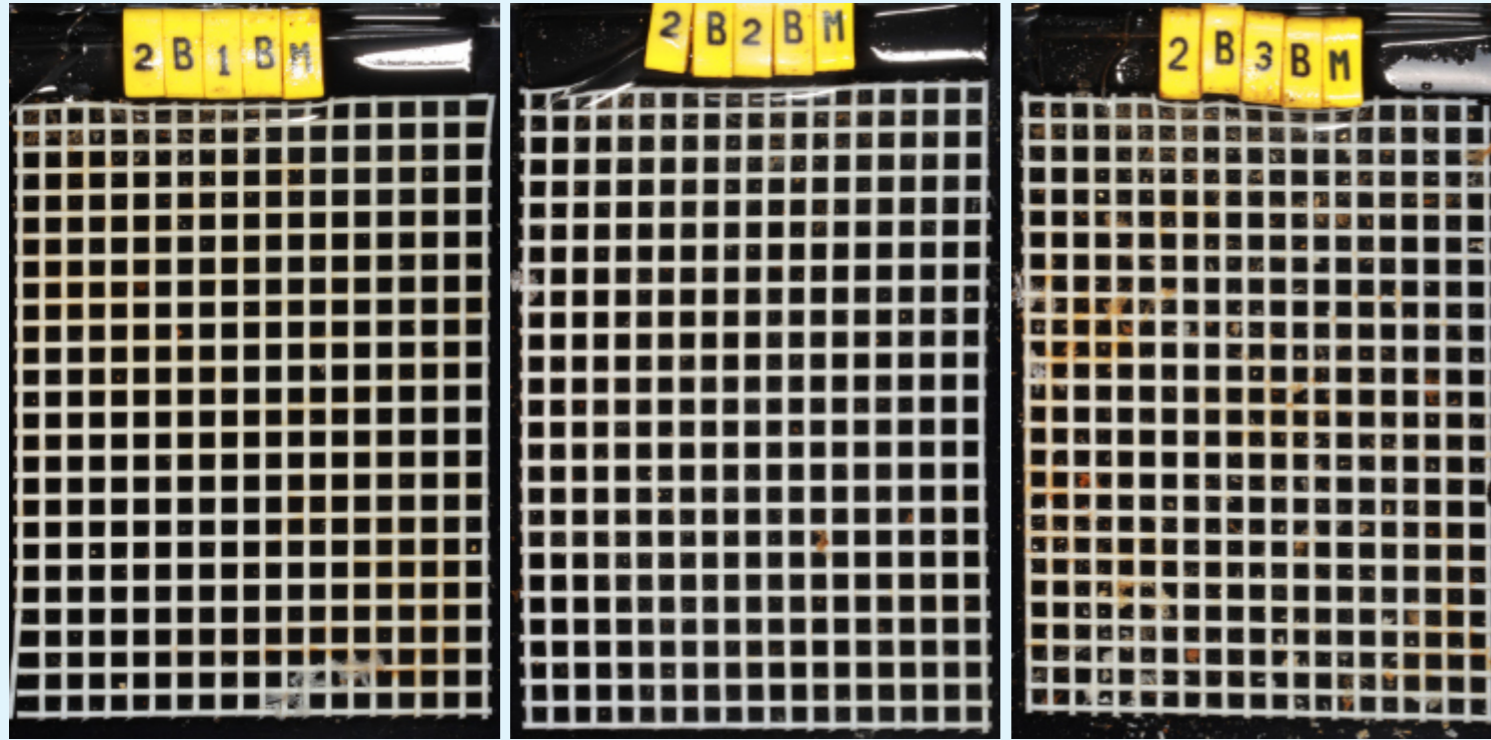




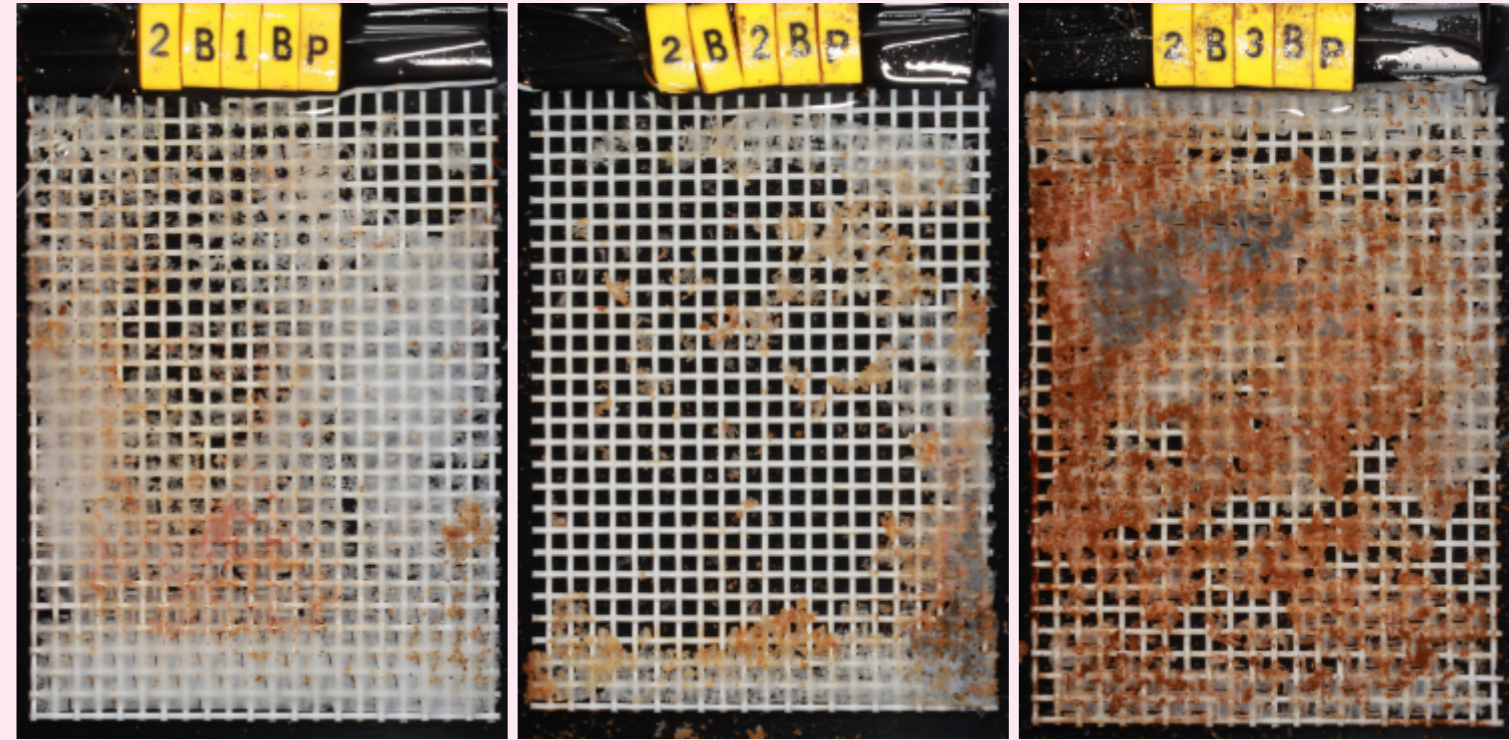
E)

Performance of *PHB 85 μm* on all 4 sediments after 6 months

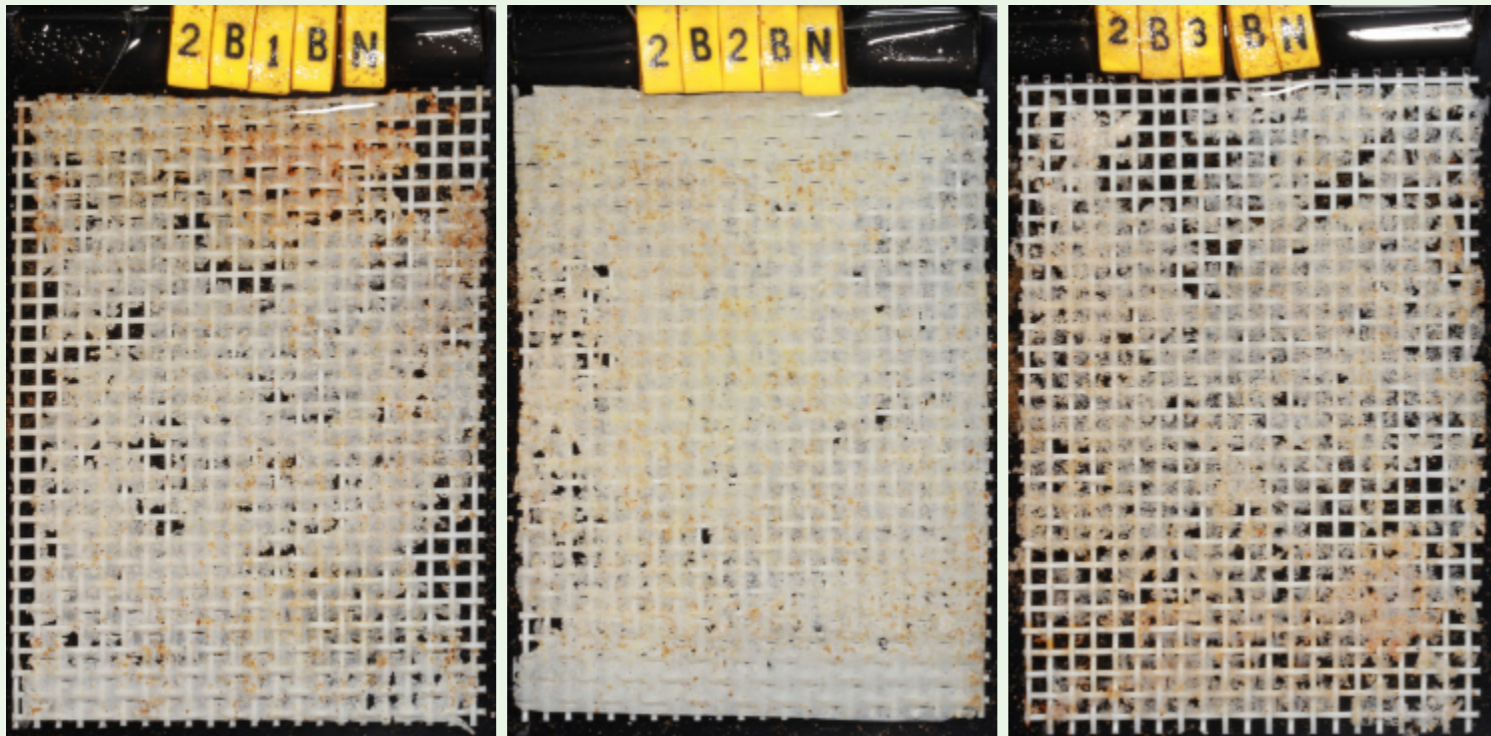
Marina di Campo



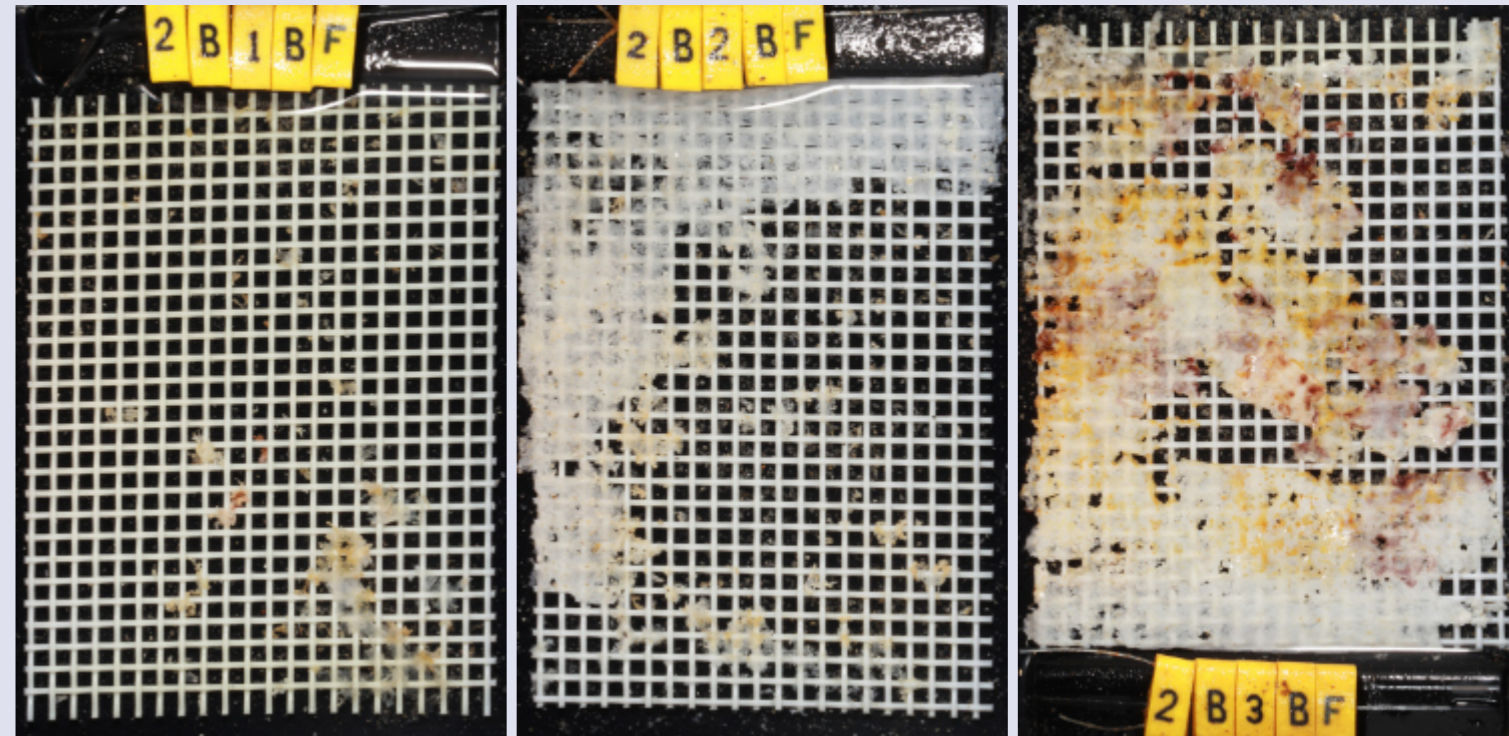
Portoferraio



Naregno



Fetovaia



\*Specimen 2B2BF adhering to both meshes.  
See pages 54–55 for details.



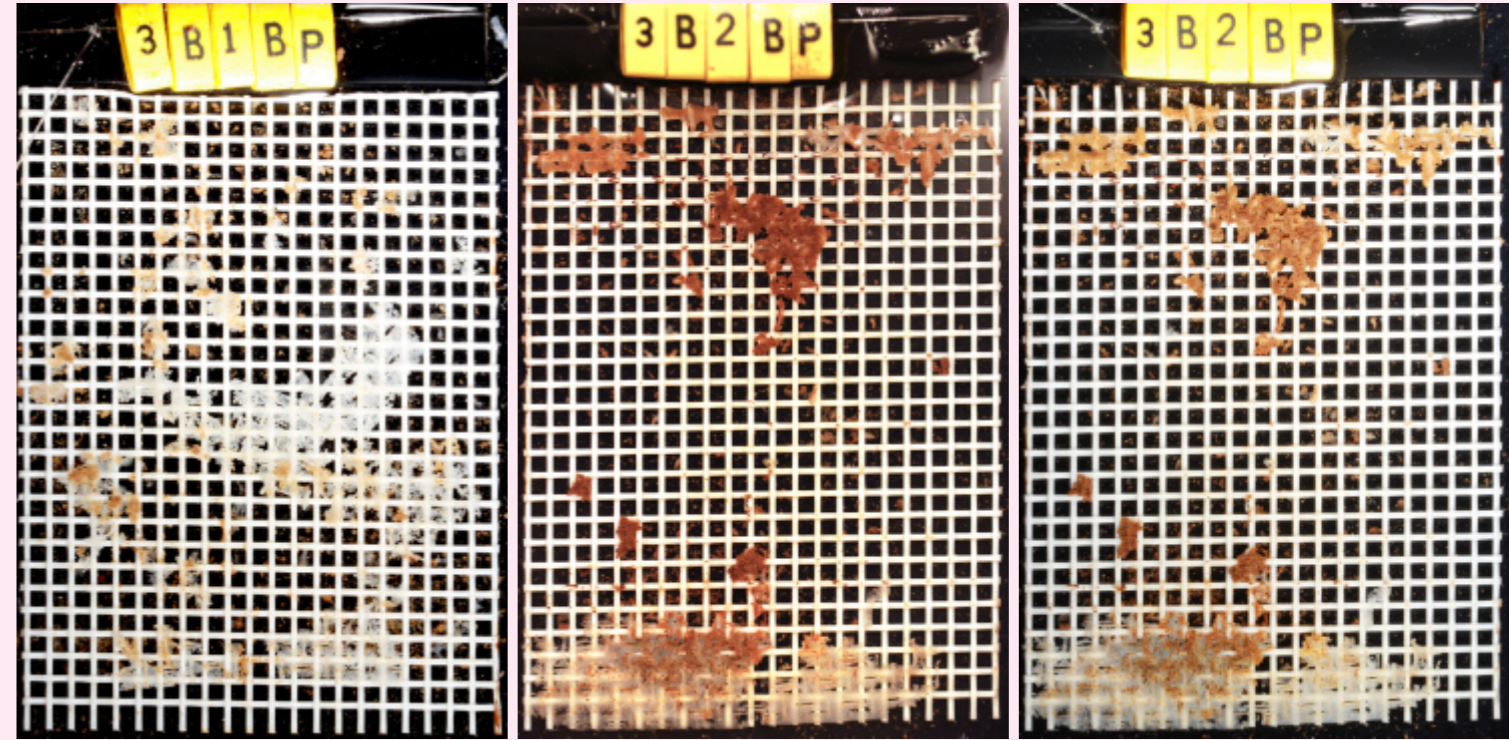
F)

Performance of *PHB* 85  $\mu\text{m}$  on 3 sediments after 8 months, and on 1 sediment after 12 months

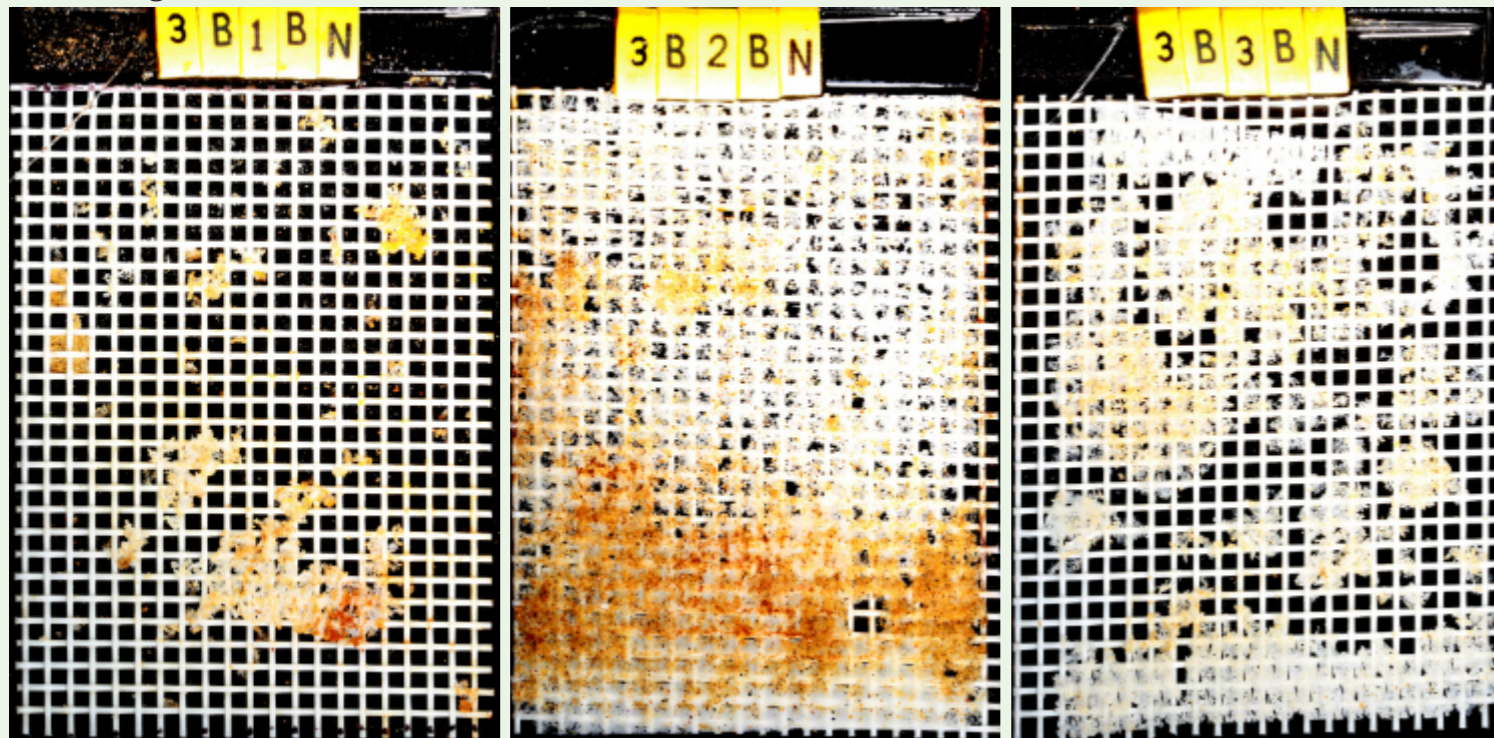
Marina di Campo



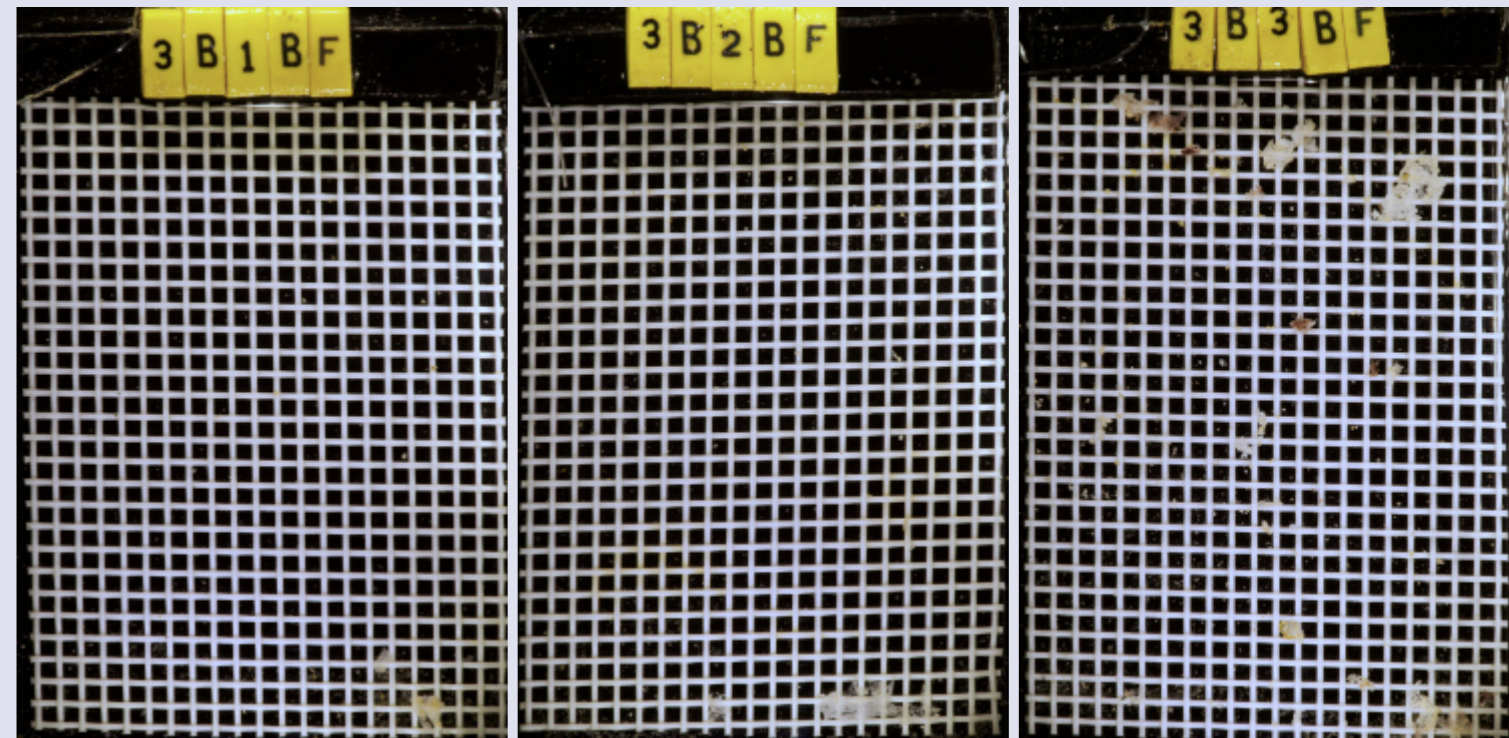
Portoferraio



Naregno



Fetovaia



sampled after 12months