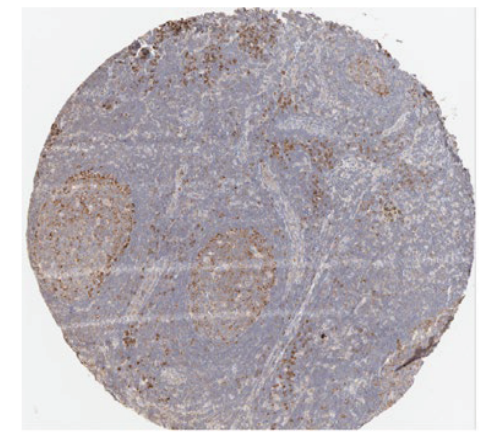
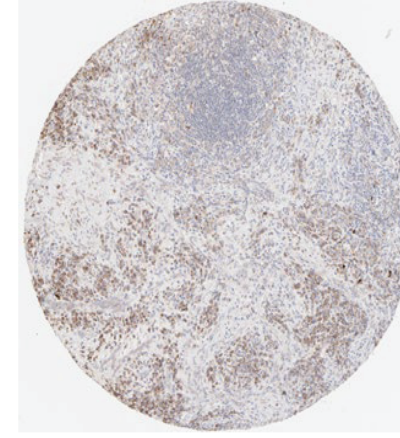
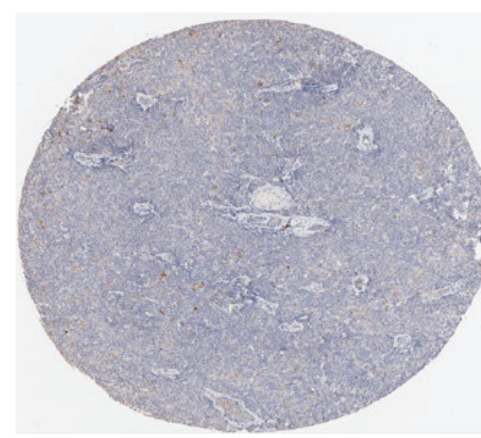
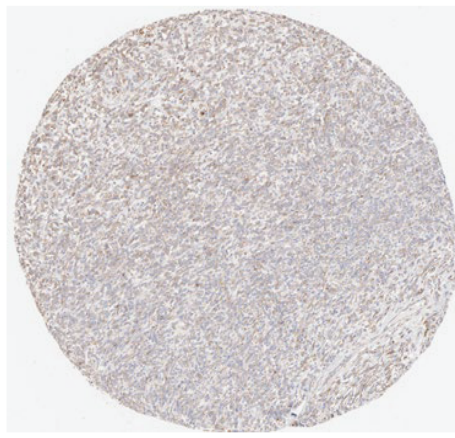


HPA003371 (RPS21)



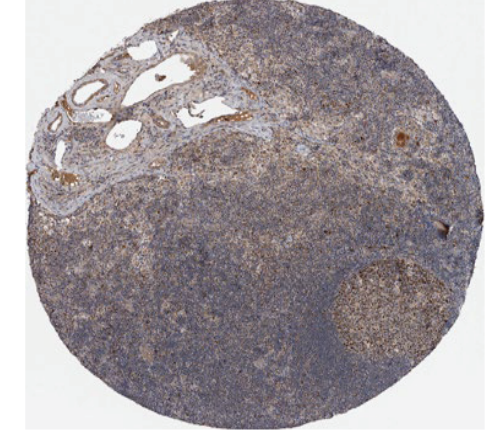
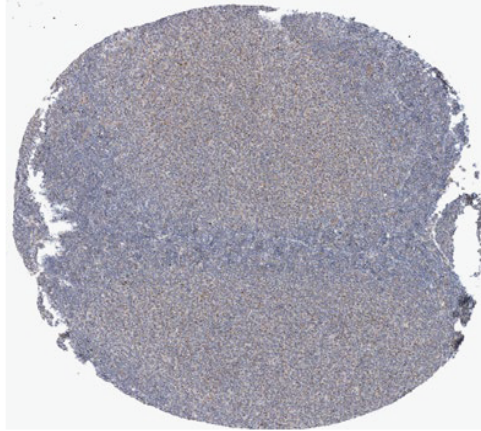
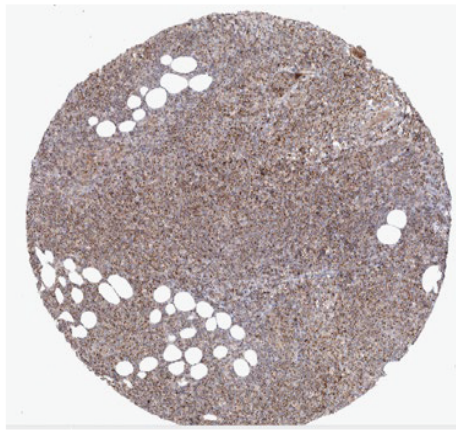
DLBCL; id:
2207; (Q>75%)

LG; id: 1726;
(Q 75%-25%)

HD-NOS; id: 370;
(Q>75%)

NT-NOS (Q [GCC 75%-
25%]; [N-GCC <25%])

HPA027202 (MRPS28)



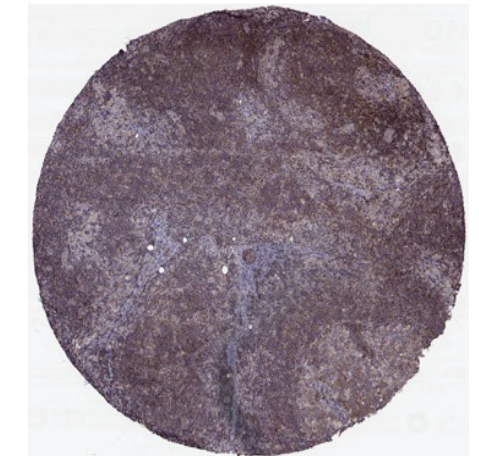
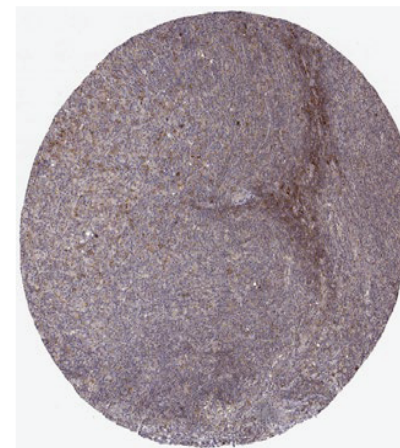
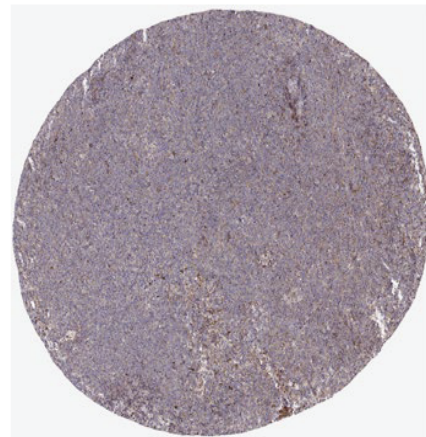
DBCL; id: 1748;
(Q>75%)

LG; id: 2731;
(Q=75%-25%)

HD-NOS; id: 3232;
(Q>75%)

NT-NOS; id: 1690; (Q [GCC
>75%]; [N-GCC <25%])

HPA072263 (RPL31)



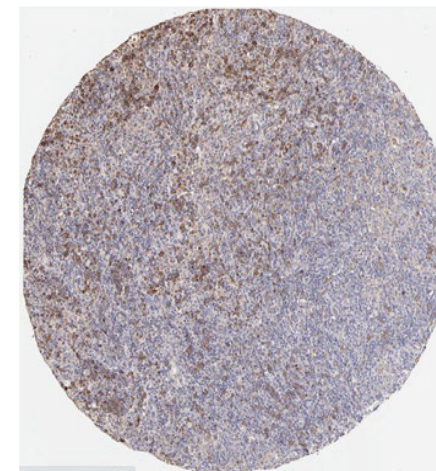
DLBCL; id: 3085;
(Q 75%-25%)

LG; id: 3129; (Q=75%-
25%)

HD-NOS; id: 2532;
(Q>75%)

NT-NOS; id: 4449; (Q [GCC
>75%]; [N-GCC <25%])

HPA002651 (RPL30)



DLBCL; id: 2207; (Q
75%-25%)

LG; 1618; (Q=75%-
25%)

HD-NOS; id: 226;
(Q<25%)

NT-NOS; id: 1636; (Q [GCC
>75%]; [N-GCC <25%])