

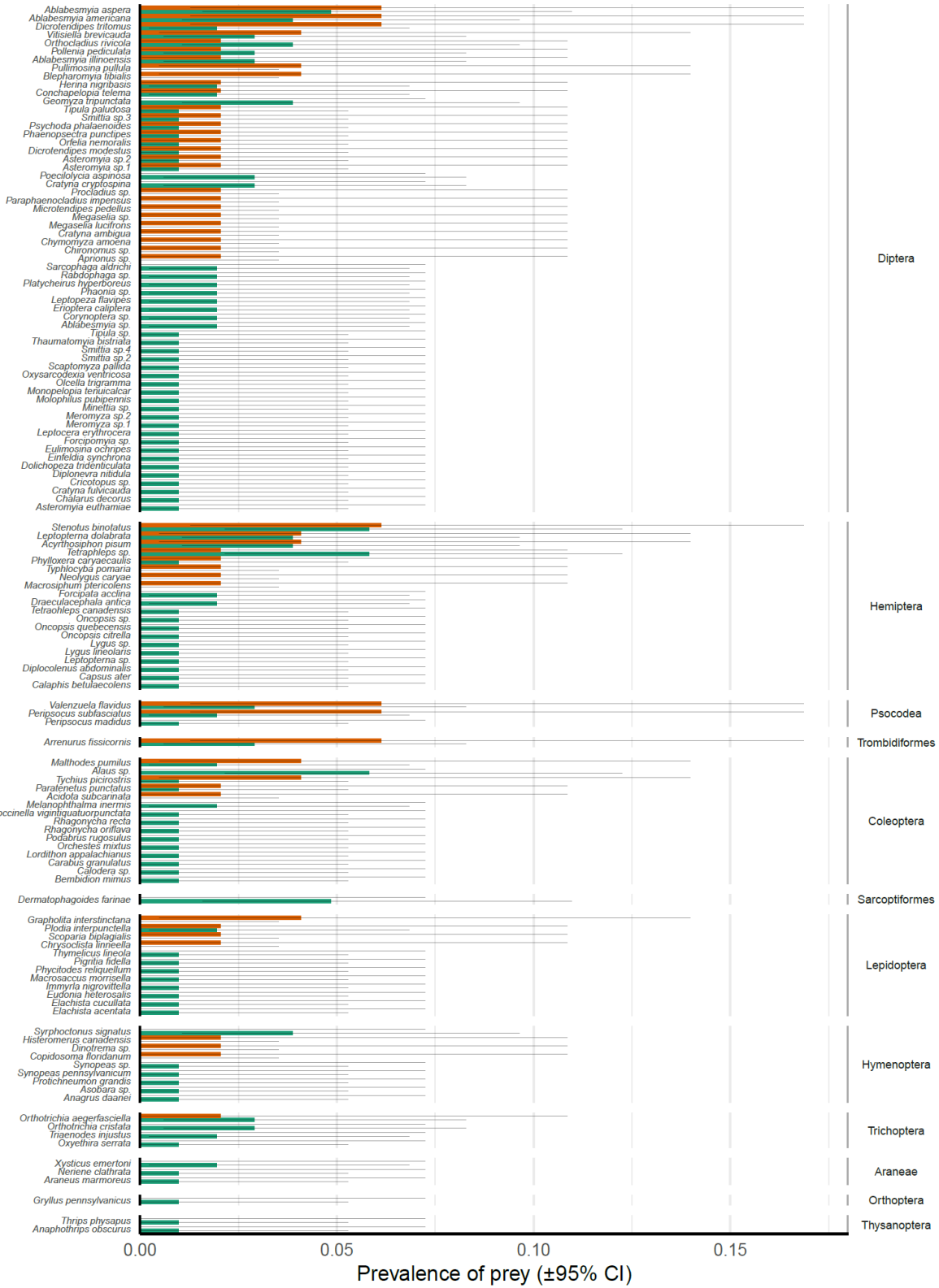
Supplementary Figure S1 for  
Metabarcoding prey DNA from fecal samples of adult dragonflies shows  
no predicted sex differences, and substantial inter-individual variation,  
in diets

**André Morrill, Kari M. Kaunisto, Julia J Mlynarek, Ella Sippola, Eero J Vesterinen, and  
Mark R. Forbes**

**Corresponding author: André Morrill ([andre\\_morrill@carleton.ca](mailto:andre_morrill@carleton.ca))**

.....

Prey taxon



Sex F M

Figure S1: Prevalences of individual prey identified (excluding the ten most prevalent; see main text and Table 1) as amplicon sequence variants within the diets of sampled male and female *Leucorrhinia intacta*, grouped by taxonomic order. Clopper-Pearson 95% confidence intervals are provided.