

Supplemental File 1 to Classification of simple and complex biological images using Krawtchouk moments and Generalized Pseudo-Zernike moments: a case study with fly wing images and breast cancer mam-mograms

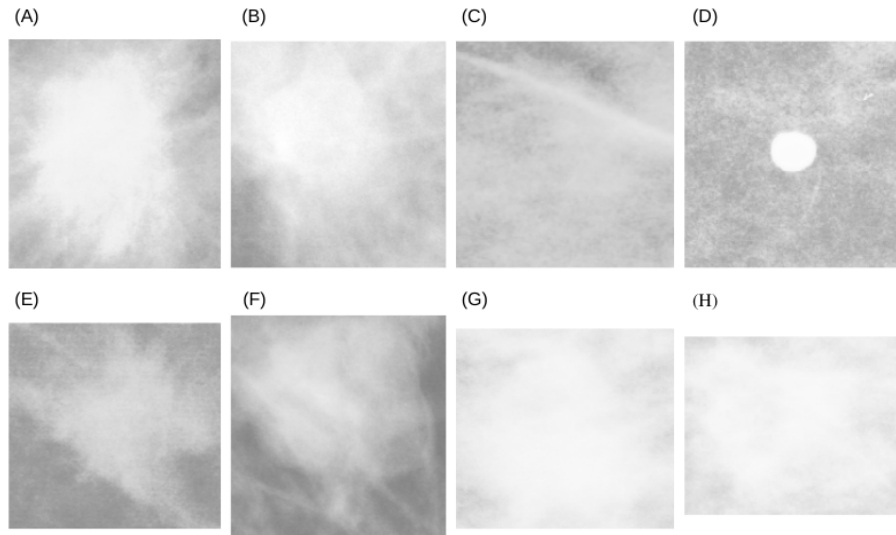


Figure 1: Images used to select the moment order. Benign cases: (a) 344 pixel \times 319 pixel; (c) 186 pixel \times 178 pixel; (e) 185 pixel \times 177 pixel; and (g) 297 pixel \times 289 pixel. Malignant cases: (b) 291 \times 175 pixel; (d) 185 pixel \times 177 pixel; (f) 273 \times 282 pixel; and (h) 225 pixel \times 273 pixel

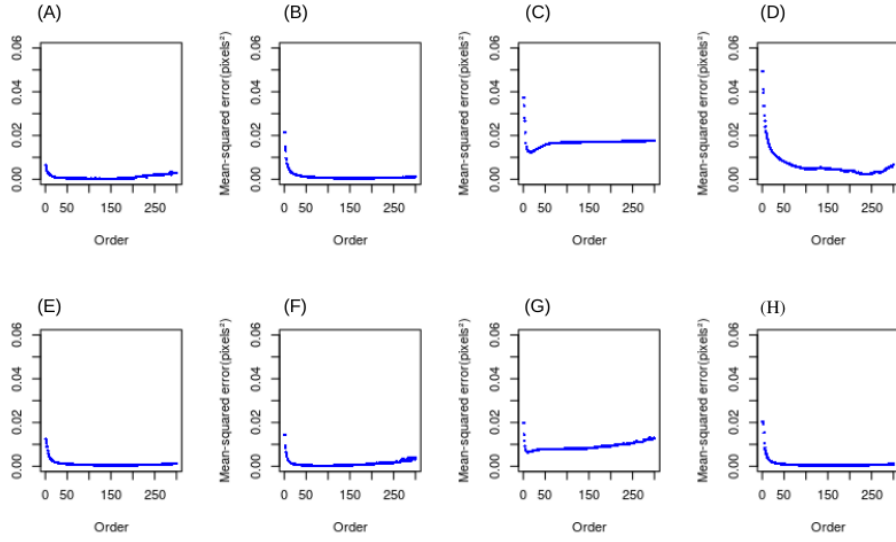


Figure 2: MSE of reconstructed image using KM. (A)-(H) are the MSE of reconstructed images according to the images from 1

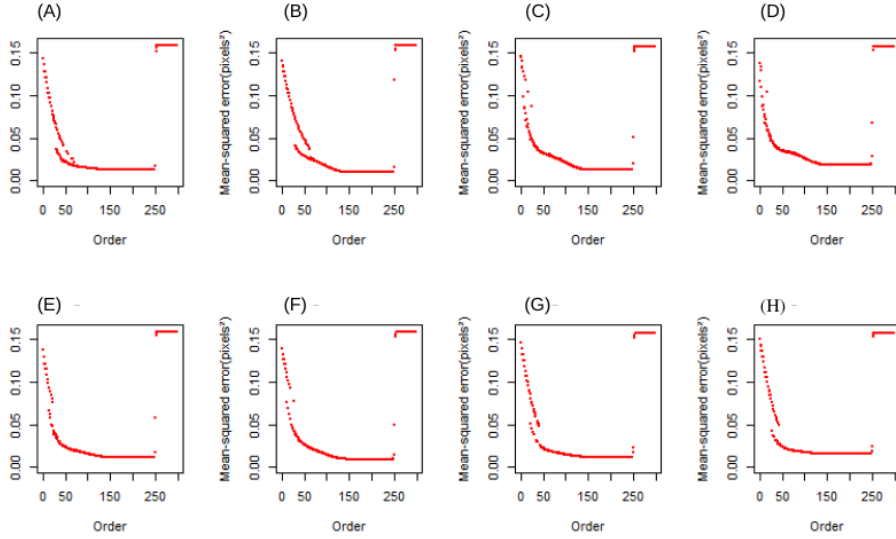


Figure 3: MSE of reconstructed image using GPZM with $\alpha = 0$. (A)-(H) are the MSE of reconstructed images according to the images from 1