

**Supplemental File 2 to Classification of simple and complex biological images using Krawtchouk moments and Generalized Pseudo-Zernike moments: a case study with fly wing images and breast cancer mammograms**

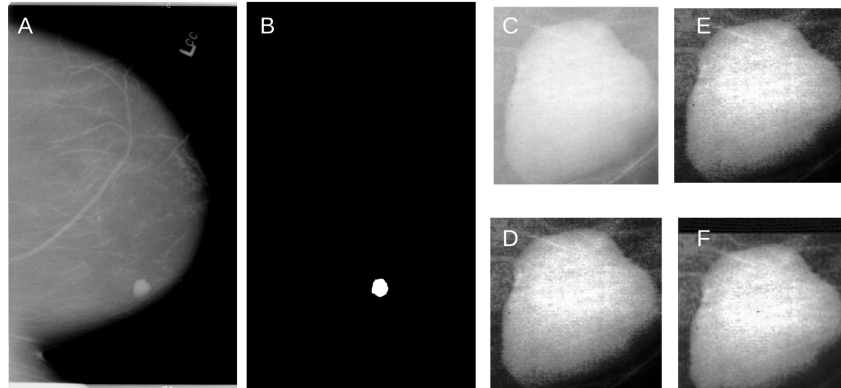


Figure 1: (A) An example of the raw mammogram image showing benign circumscribed breast tumor (index no. P\_01712). (B) Binarized mammogram image showing the tumor (white). (C) Region of interest centered on the tumor (296 pixel  $\times$  319 pixel) before (D) Enhancement. (E) Reconstruction using KM; (F) Reconstruction using GPZM.

