

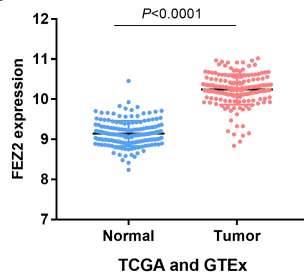
Figure 1

A

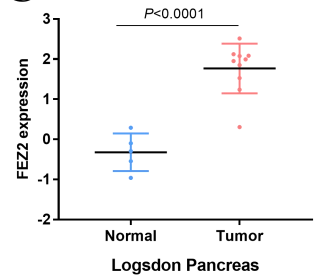
Analysis Type by Cancer	Cancer vs. Normal		Cancer vs. Normal	
	FEZ1	FEZ2	FEZ1	FEZ2
Bladder Cancer	1	2		
Brain and CNS Cancer		4		
Breast Cancer	5			1
Cervical Cancer				
Colorectal Cancer	1			3
Esophageal Cancer	2			
Gastric Cancer				
Head and Neck Cancer	4		1	
Kidney Cancer				
Leukemia				3
Liver Cancer	1			
Lung Cancer	10			3
Lymphoma			3	
Melanoma				1
Myeloma	1			
Other Cancer	4			
Ovarian Cancer	1			2
Pancreatic Cancer			2	
Prostate Cancer	1			
Sarcoma	1	1		
Significant Unique Analyses	9	30	6	13
Total Unique Analyses	444		422	

1	5	10	10	5	1
█	█	█	█	█	█
←	←	←	←	←	←
		%			

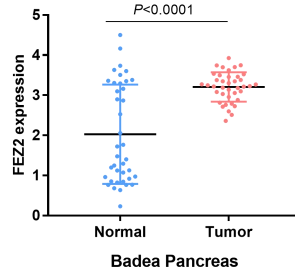
B



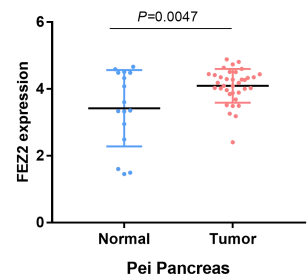
C



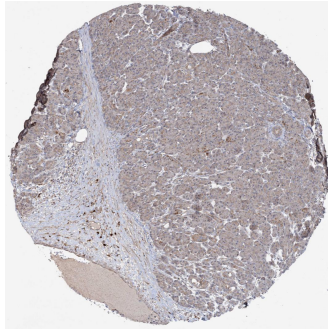
D



E



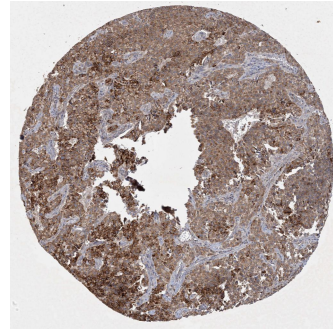
F



Pancreas (HPA035978)

Male, age 63
 Exocrine glandular cells
 Staining: **Medium**
 Intensity: **Moderate**
 Quantity: **>75%**
 Islets of Langerhans
 Staining: **Medium**
 Intensity: **Moderate**
 Quantity: **>75%**

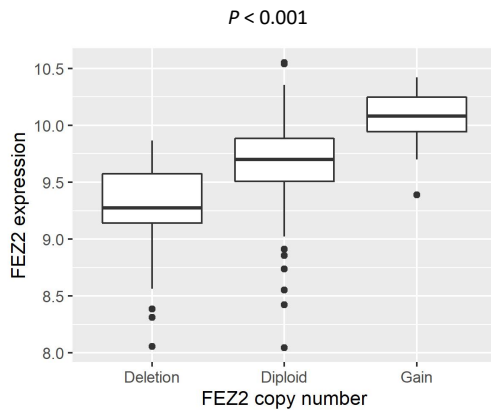
G



Pancreatic cancer (HPA035978)

Male, age 65
 Tumor cells
 Staining: **High**
 Intensity: **Strong**
 Quantity: **>75%**

H



I

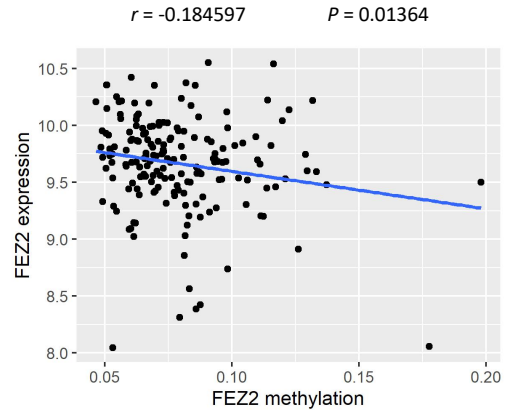
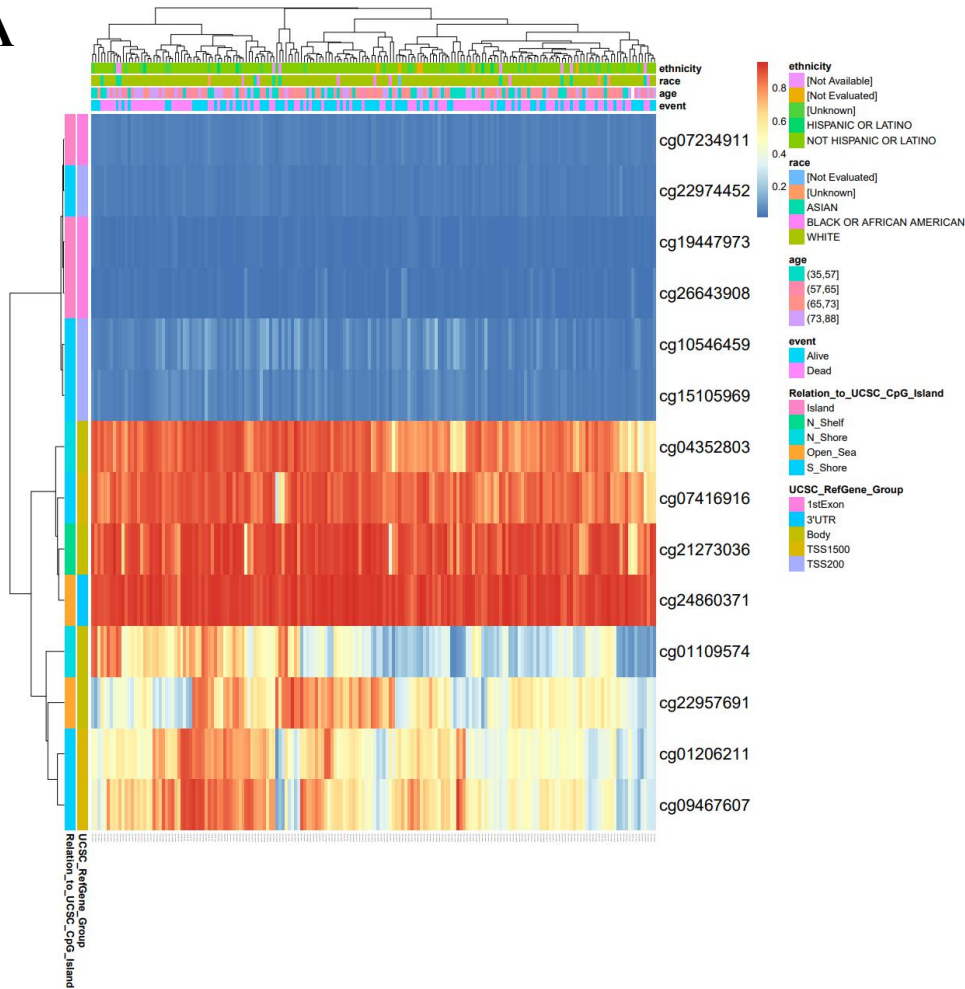
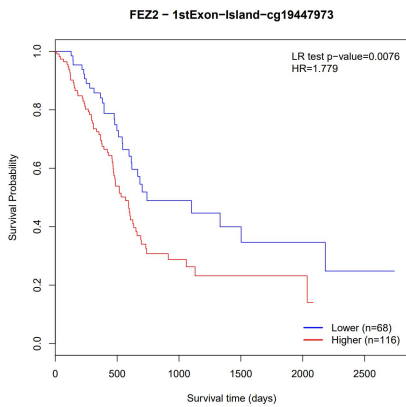


Figure 2

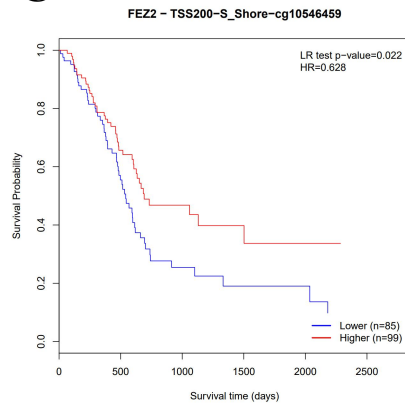
A



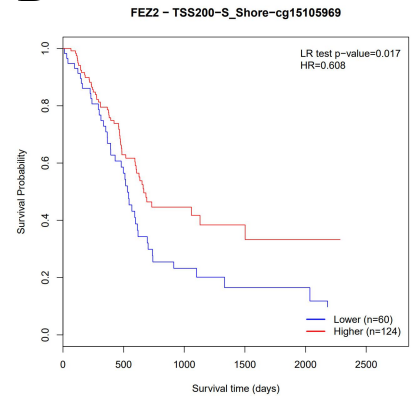
B



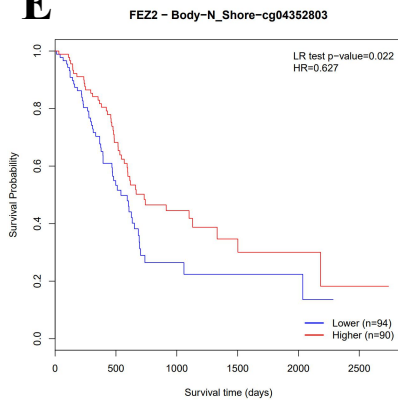
C



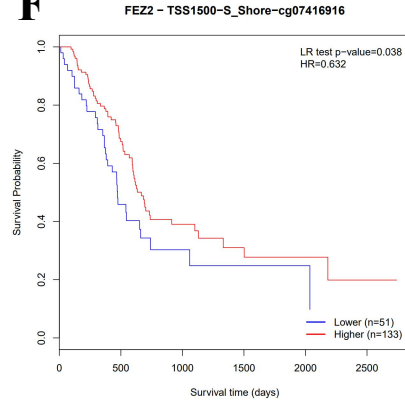
D



E



F



G

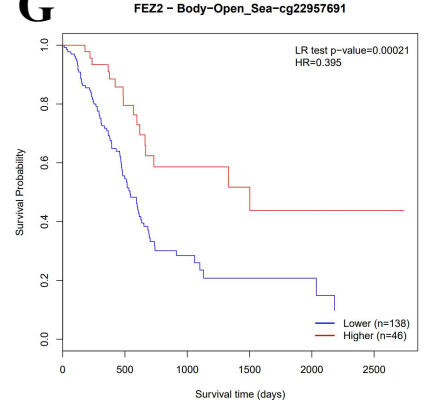


Figure 3

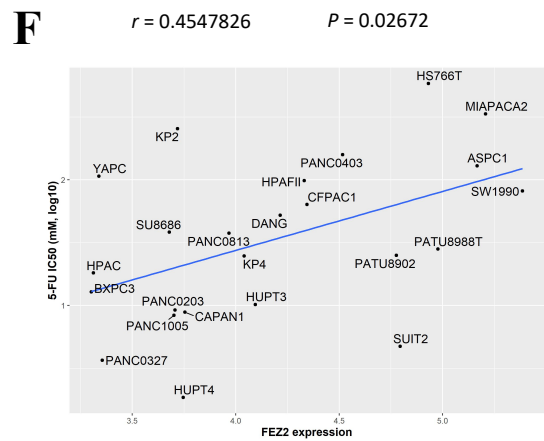
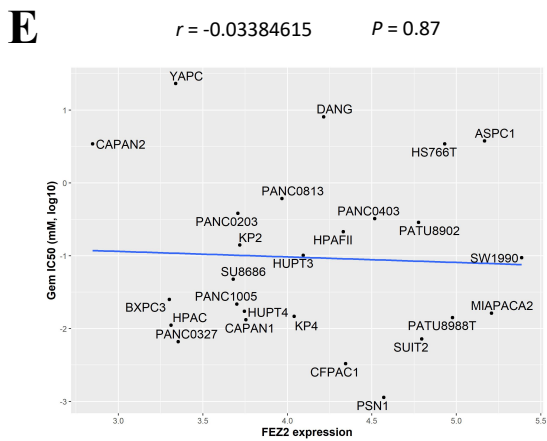
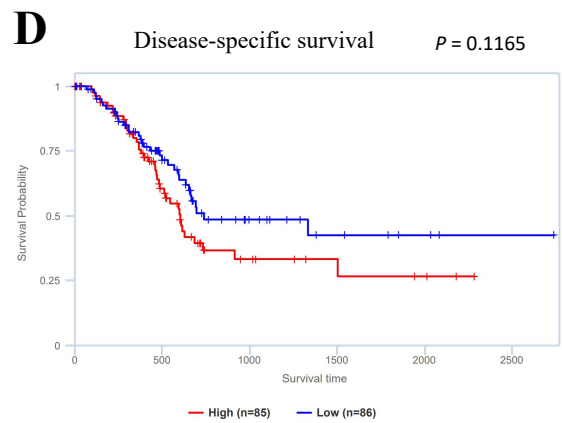
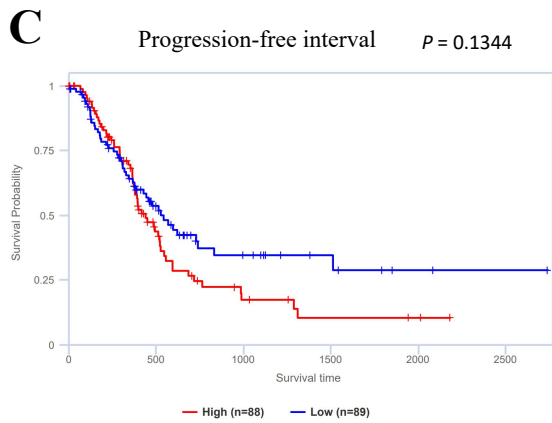
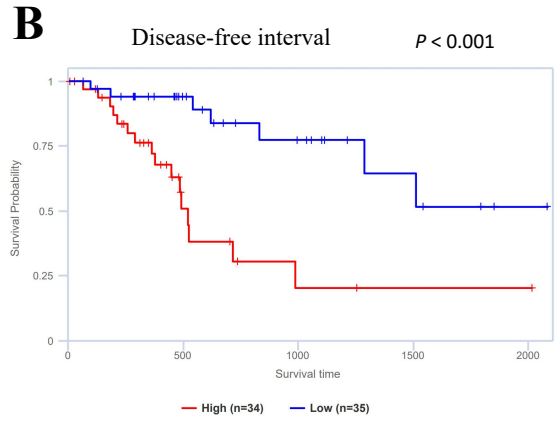
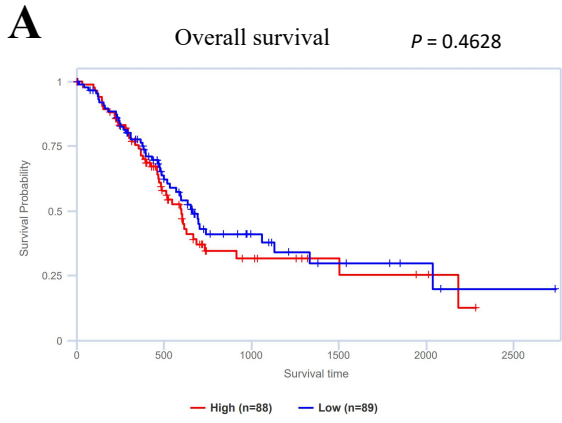
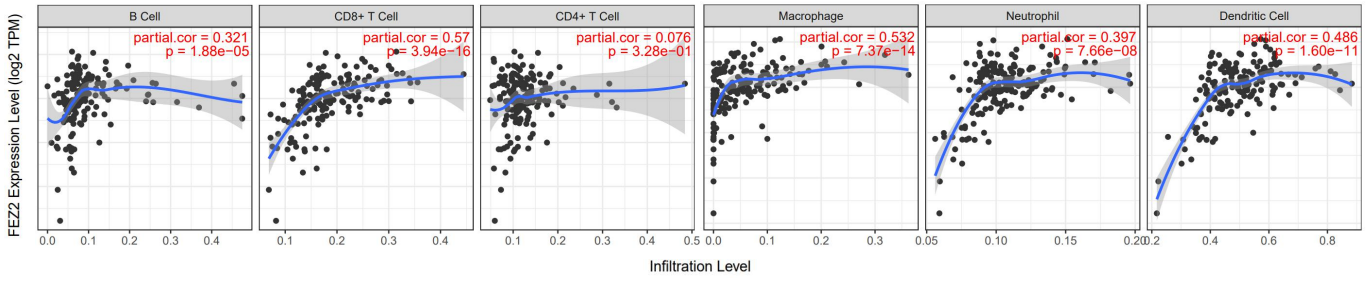
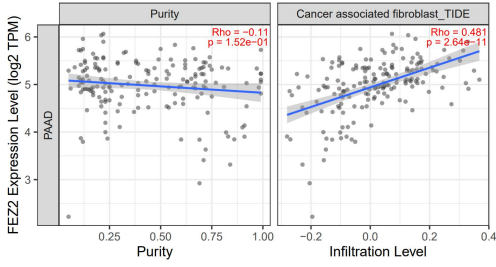


Figure 4

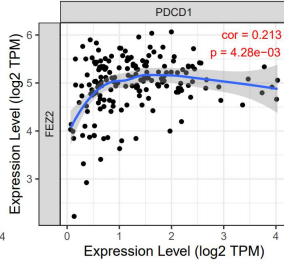
A



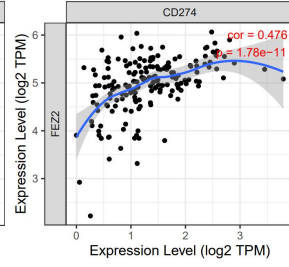
B



C



D



E

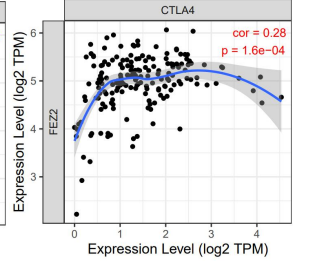
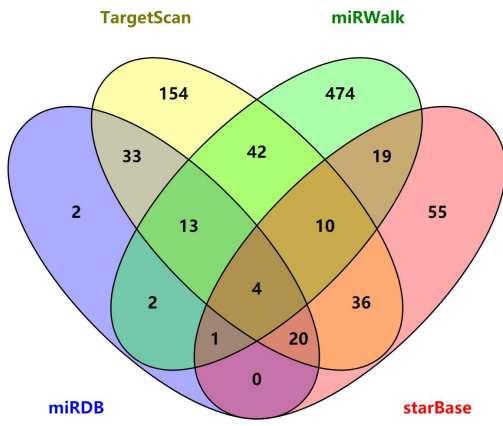
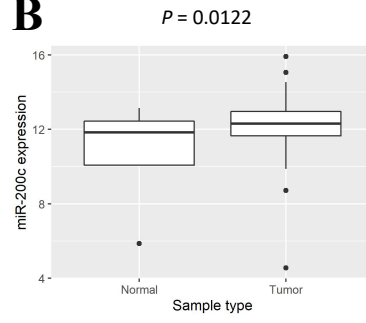


Figure 5

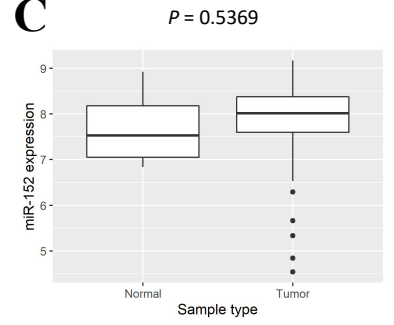
A



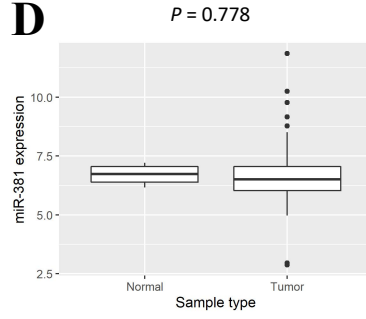
B



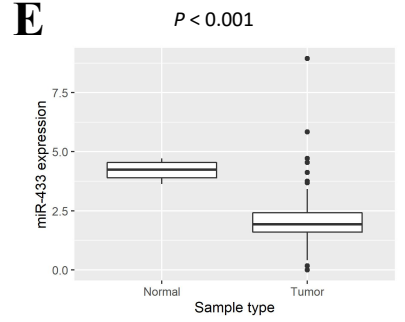
C



D



E



F

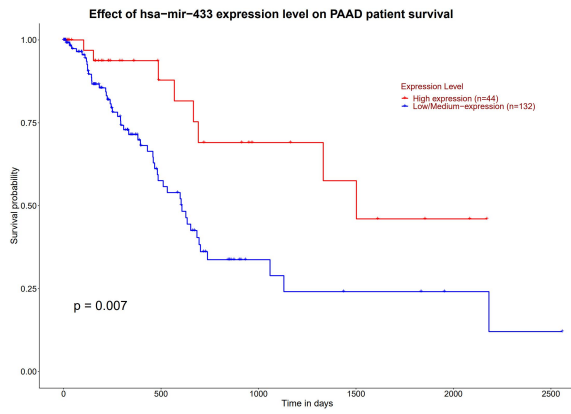


Figure 6

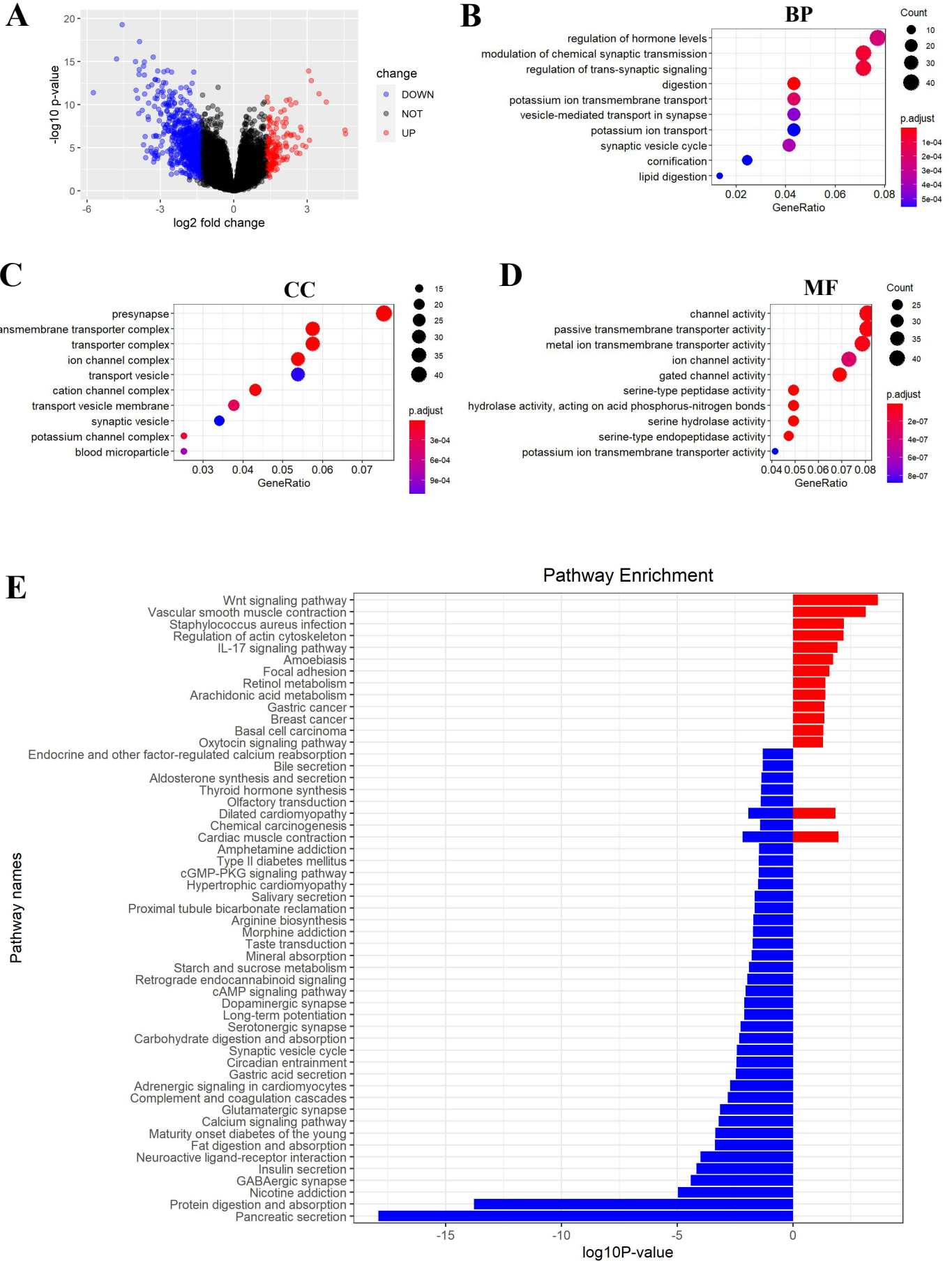


Figure 7