

## Cell Line DNA Typing Report

Case Number: CID20200042

Report Date: 07/08/2020

## Genelabs Life Science Corp.

12F.-6, No.3, Yuanqu St.,  
Nangang Dist.,  
Taipei City 115, Taiwan  
TEL: +886-2-26557678  
FAX: +886-2-26557572  
E-mail: cellid@genelabs.com.tw

**Sample Information:**

- Applicant Name: 邱泰然 Tai-Jan Chiu
- Institution: 高雄長庚紀念醫院血液腫瘤科 Department of Hematology-Oncology, Kaohsiung Chang Gung Memorial Hospital
- Sample Description: **SAS**
- Sample type: Cell Pellet
- Sample Received Date: **07/02/2020**

**Test Description:**

DNA of the sample is extracted by Roche MagNA Pure Compact System.

DNA conc. = 143.3 ng/μl; OD260/280 = 2.00; OD260/230 = 2.26

The STR loci are amplified by Promega GenePrint® 24 System.

The CE analysis is performed on ABI PRISM 3730 GENETIC ANALYZER.

The raw data is analyzed by GeneMapper® Software V3.7.

The STR analysis is operated and reported by Mission Biotech.

This report is issued by:

*Zhang Kuo-Chang*

Laboratory Director

*James Chung*

General Manager

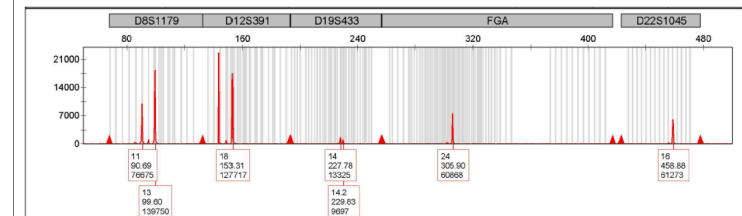
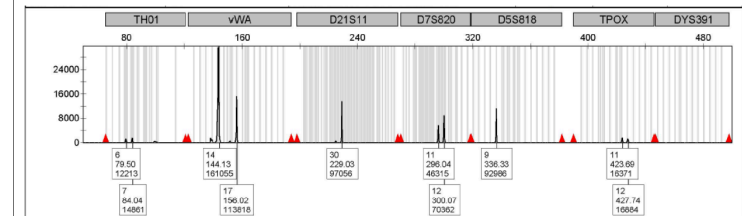
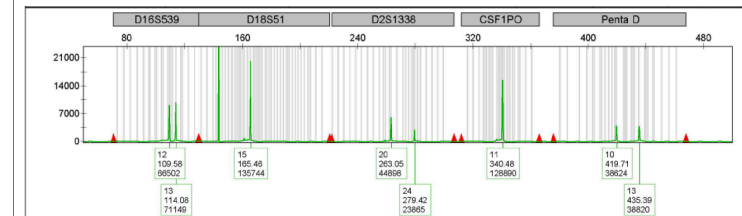
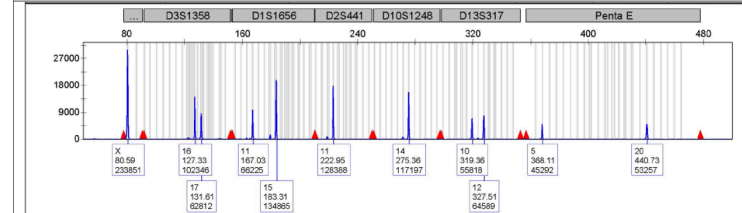
**STR Analysis Result:**

ANSI/ATCC ASN-0002 STR Loci	Repeat Numbers	Extended STR Loci	Repeat Numbers	Extended STR Loci	Repeat Numbers
D5S818	9,9	D3S1358	16,17	DYS391*	N/A
D13S317	10,12	D1S1656	11,15	D8S1179	11,13
D7S820	11,12	D2S441	11,11	D12S391	18,18
D16S539	12,13	D10S1248	14,14	D19S433	14,14.2
vWA	14,17	Penta E	5,20	FGA	24,24
TH01	6,7	D18S51	15,15	D22S1045	16,16
Amelogenin	X	D2S1338	20,24		
TPOX	11,12	Penta D	10,13		
CSF1PO	11,11	D21S11	30,30		

Case Number: CID20200042

Test Date: 07/06/2020

## Allele Report

Case Number: CID20200042

# Cell Line DNA Typing Report

Case Number: CID20200040  
Report Date: 07/08/2020

**Genelabs Life Science Corp.**  
12F-6, No.3, Yuanqu St.,  
Nangang Dist.,  
Taipei City 115, Taiwan  
TEL: +886-2-26557678  
FAX: +886-2-26557572  
E-mail: cellid@genelabs.com.tw

## Sample Information:

- i. Applicant Name: 邱泰然 Tai-Jan Chiu
- ii. Institution: 高雄長庚紀念醫院血液腫瘤科 Department of Hematology-Oncology, Kaohsiung Chang Gung Memorial Hospital
- iii. Sample Description: **CAL27**
- iv. Sample type: Cell Pellet
- v. Sample Received Date: **07/02/2020**

## Test Description:

DNA of the sample is extracted by Roche MagNA Pure Compact System.  
DNA conc. = 113.0 ng/μl; OD260/280 = 2.00; OD260/230 = 2.26  
The STR loci are amplified by Promega GenePrint® 24 System.  
The CE analysis is performed on ABI PRISM 3730 GENETIC ANALYZER.  
The raw data is analyzed by GeneMapper® Software V3.7.  
The STR analysis is operated and reported by Mission Biotech.  
This report is issued by:

*Zhang Kuei Chang*

Laboratory Director

*James Chung*

General Manager

## STR Analysis Result:

ANSI/ATCC ASN-0002 STR Loci	Repeat Numbers	Extended STR Loci	Repeat Numbers	Extended STR Loci	Repeat Numbers
D5S818	11,12	D3S1358	16,16	DYS391*	N/A
D13S317	10,11	D1S1656	13,16	D8S1179	13,15
D7S820	10,10	D2S441	10,11.3	D12S391	18.3,20
D16S539	11,12	D10S1248	12,16	D19S433	14,15.2
vWA	14,17	Penta E	7,7	FGA	25,25
TH01	6,9.3	D18S51	13,13	D22S1045	13,16
Amelogenin	X	D2S1338	23,24	Case Number: CID20200040 Test Date: 07/06/2020	
TPOX	8,8	Penta D	9,10		
CSF1PO	10,12	D21S11	28,29		

# Allele Report

Case Number: CID20200040

