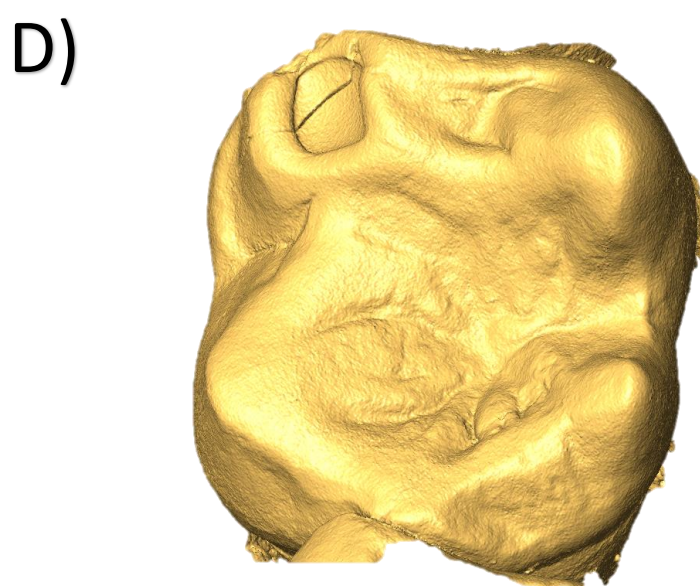
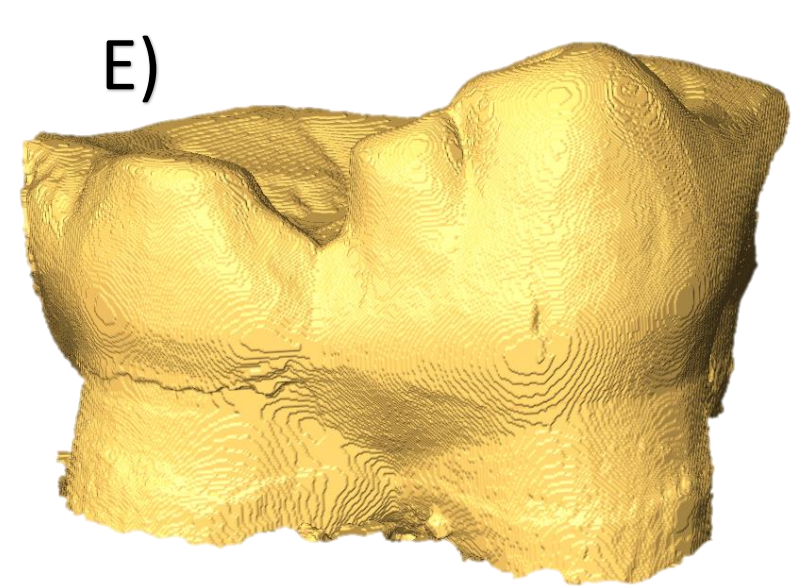


Haplemur griseus – ZMB 43240 LLM2



Prolemur simus – ZMB 5511 LLM2



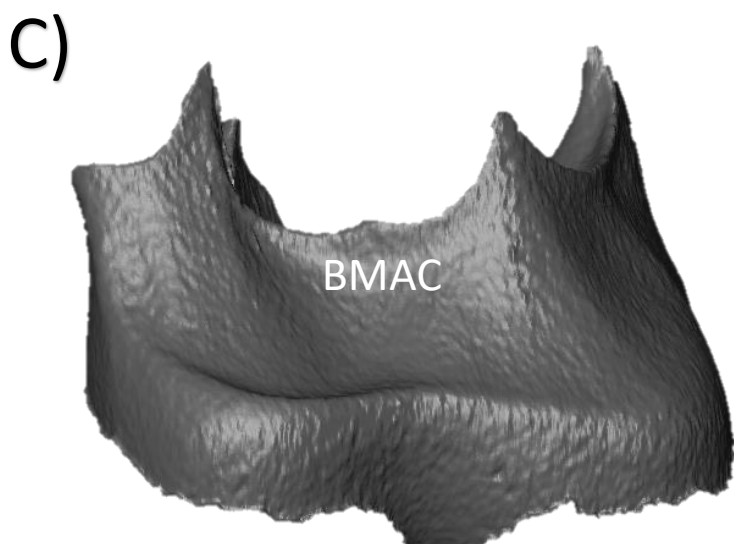
Prolemur simus – ZMB 5511 LLM1



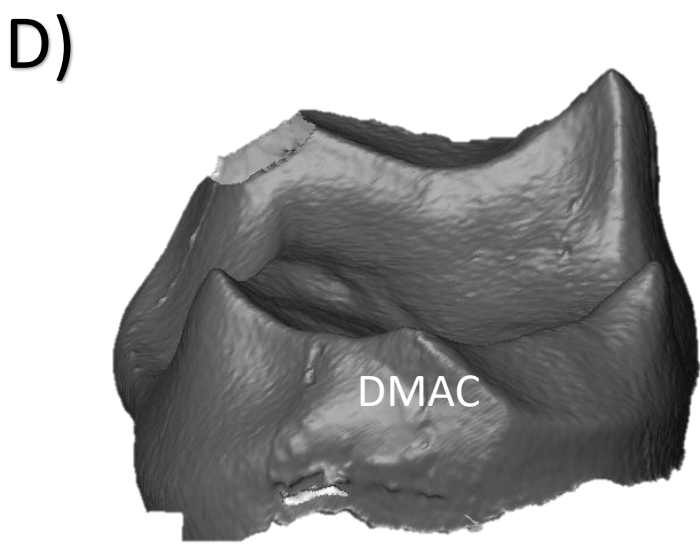
Eulemur fulvus – ZMB 44476 LLM2



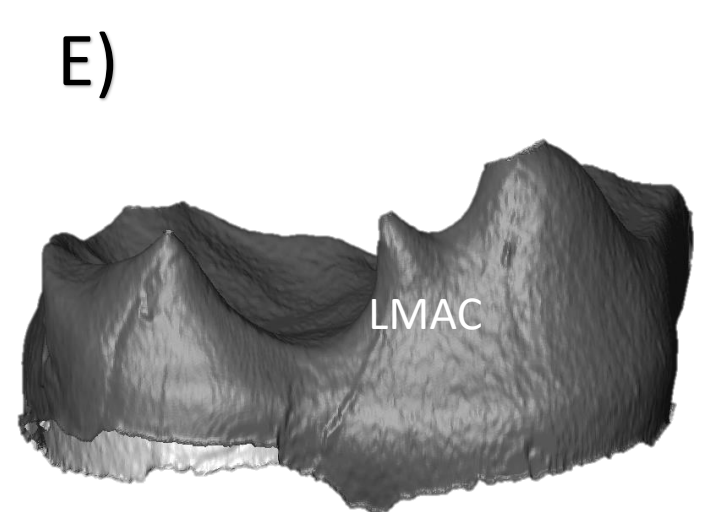
Varecia variegata – ZMB MAM_A LLM2



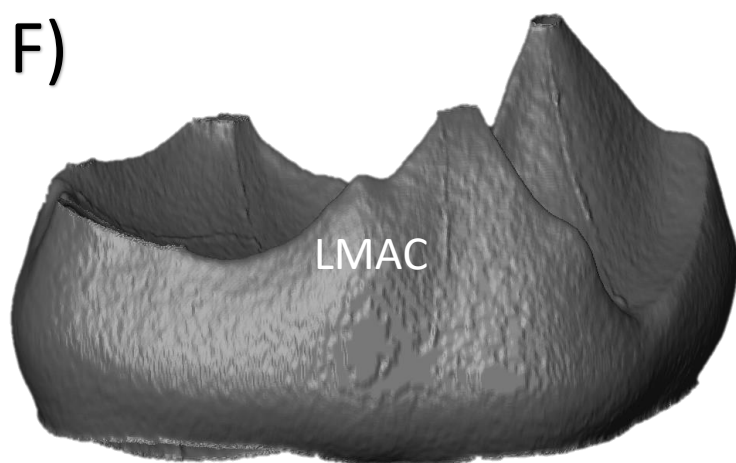
Haplemur griseus – ZMB 43240 LLM2



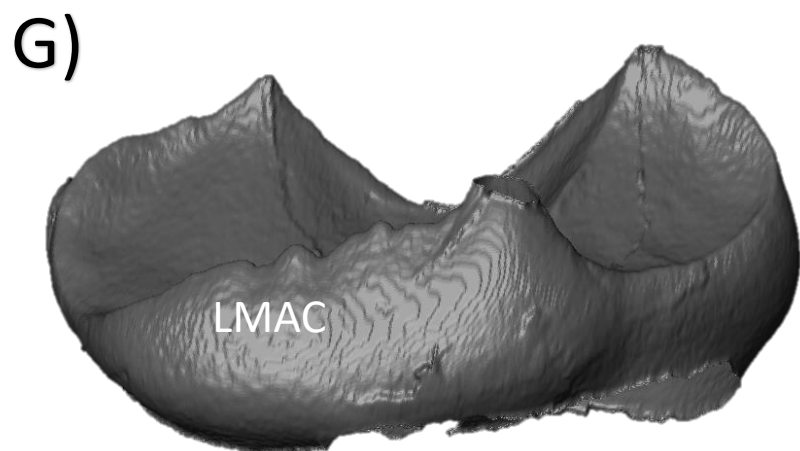
Prolemur simus – ZMB 5511 LLM2



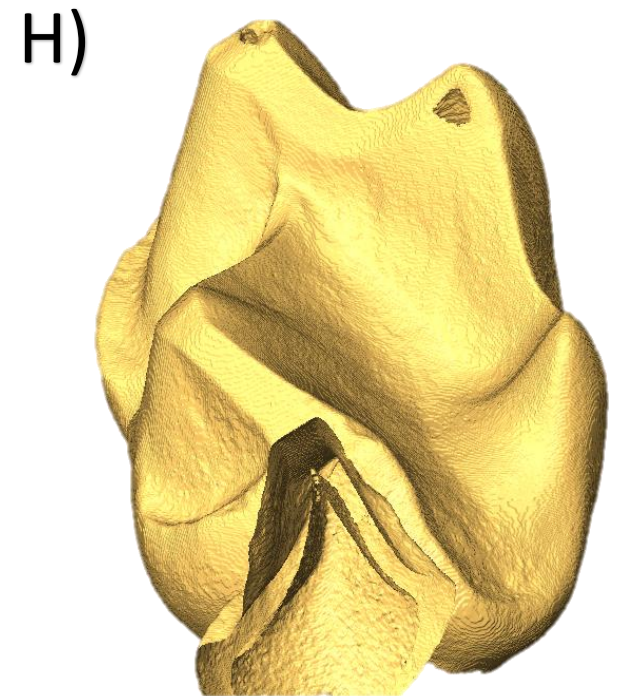
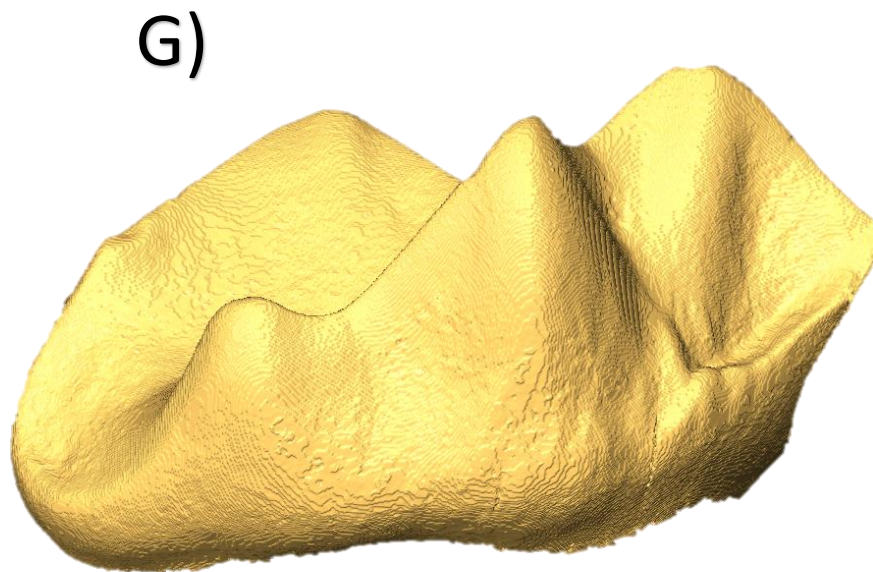
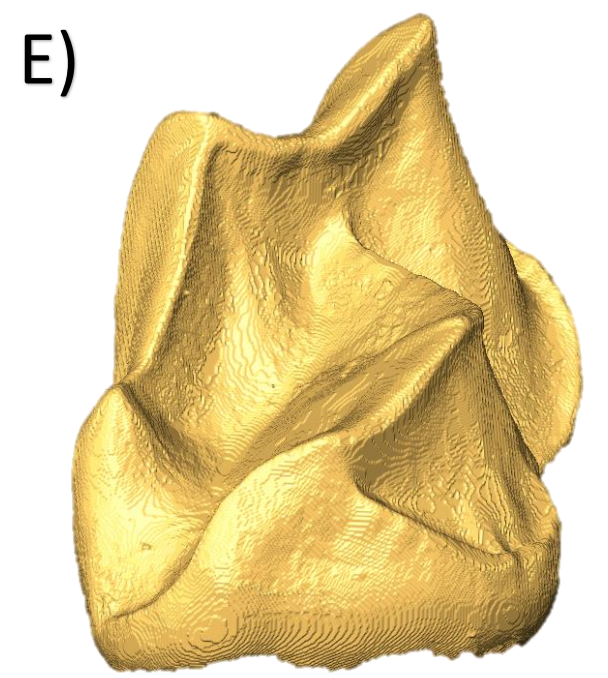
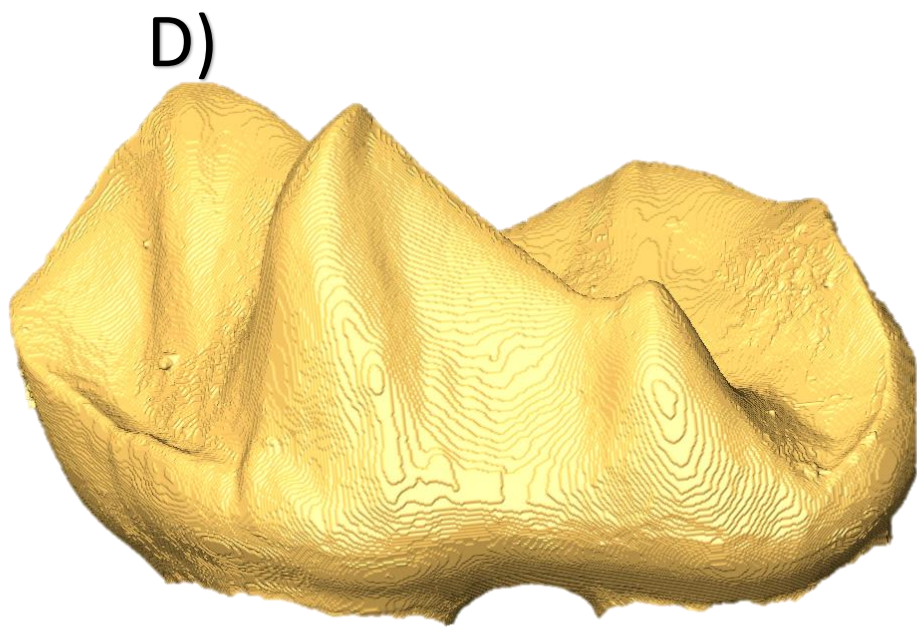
Prolemur simus – ZMB 5511 LLM1



Eulemur fulvus – ZMB 44476 LLM2

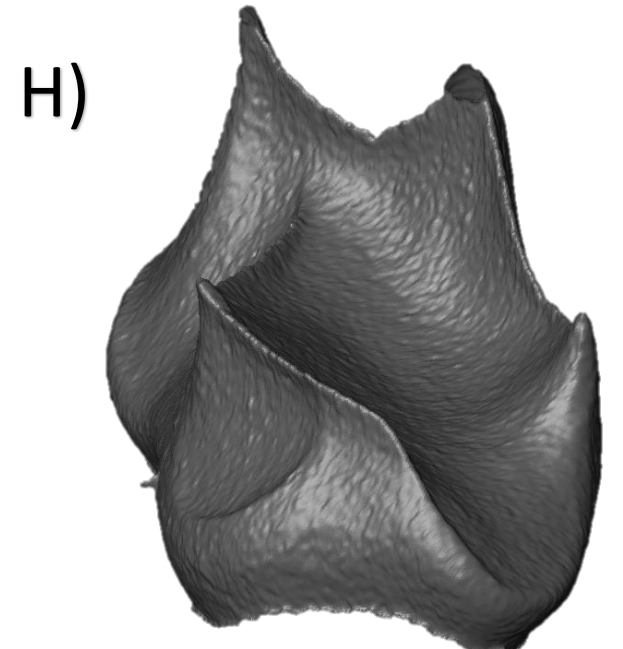
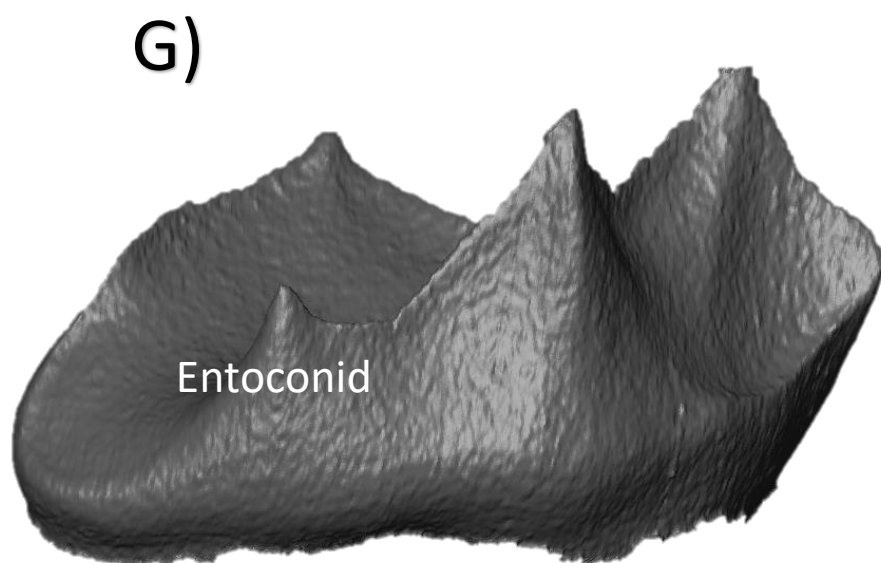
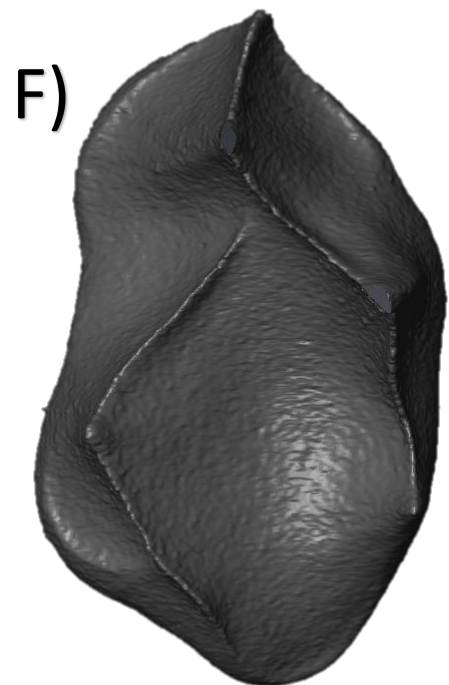
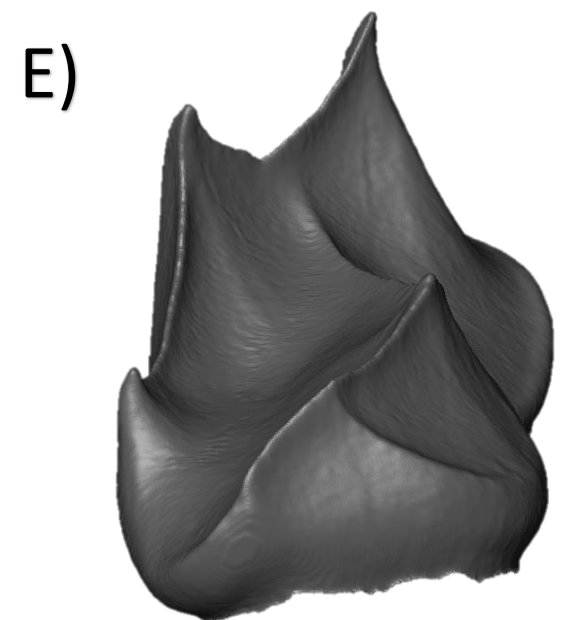
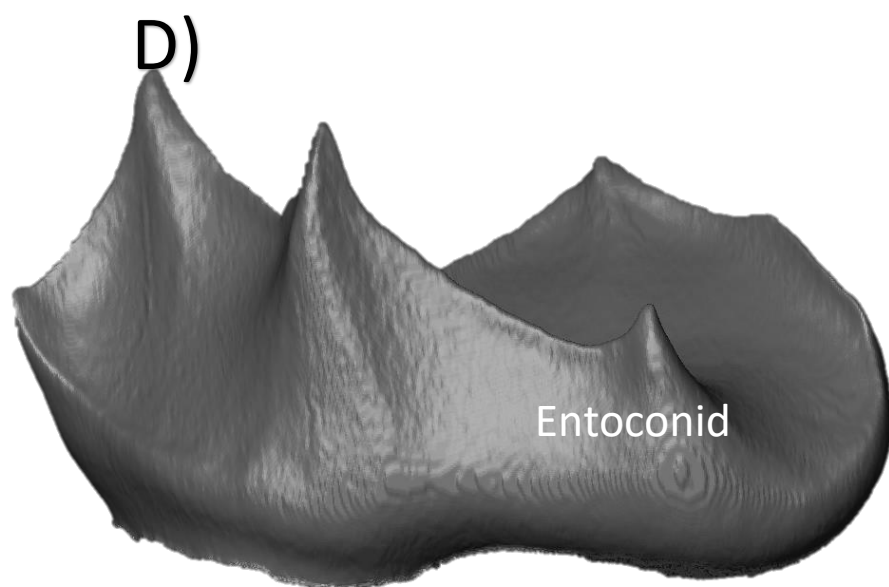
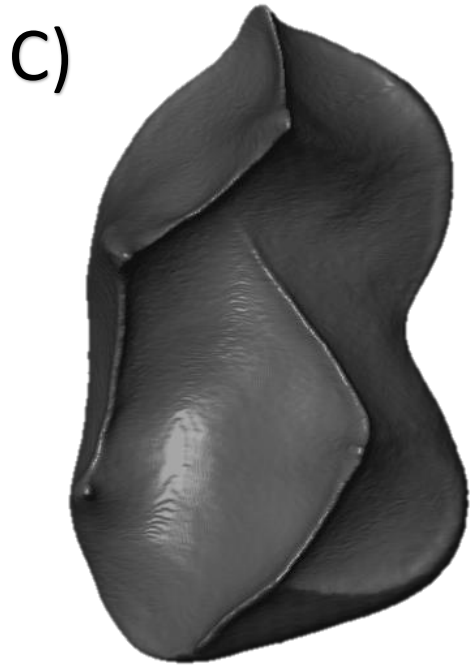


Varecia variegata – ZMB MAM_A LLM2



Lepilemur mustelinus – ZMB 5649 LRM2

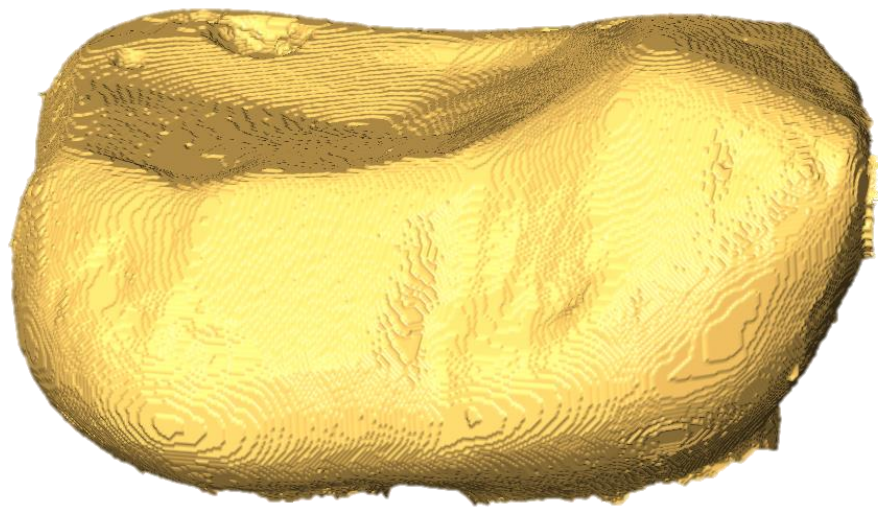
Lepilemur leucopus - ZMB 35351 LLM2



Lepilemur mustelinus – ZMB 5649 LRM2

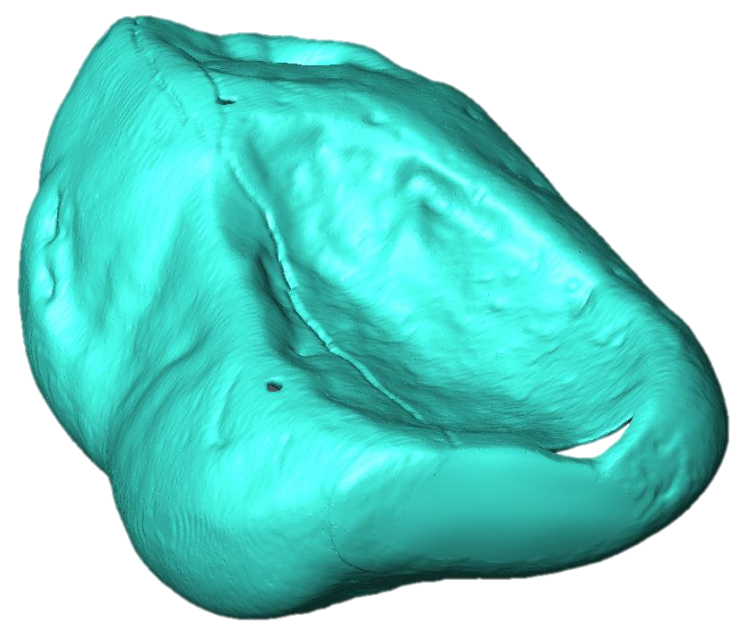
Lepilemur leucopus - ZMB 35351 LLM2

C)



Cheirogaleus sp. – ZMB 4823 LRM2

D)



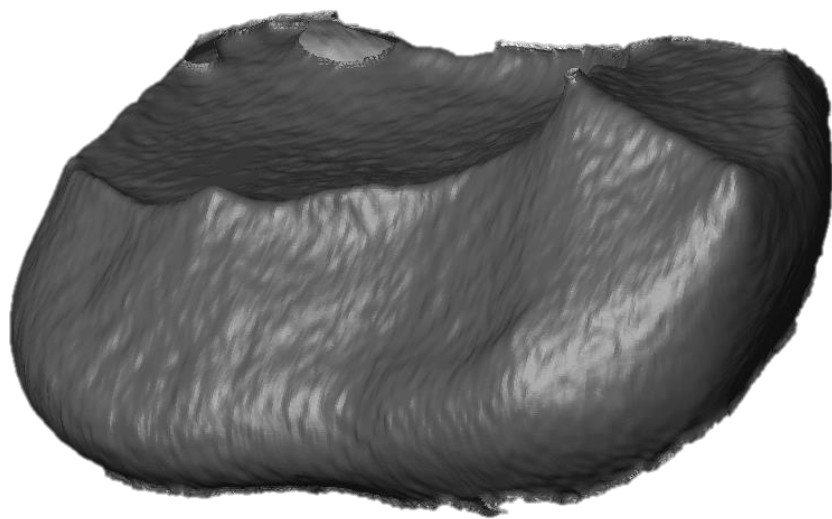
Cheirogaleus sp. – ZMB 35352 LLM1

E)



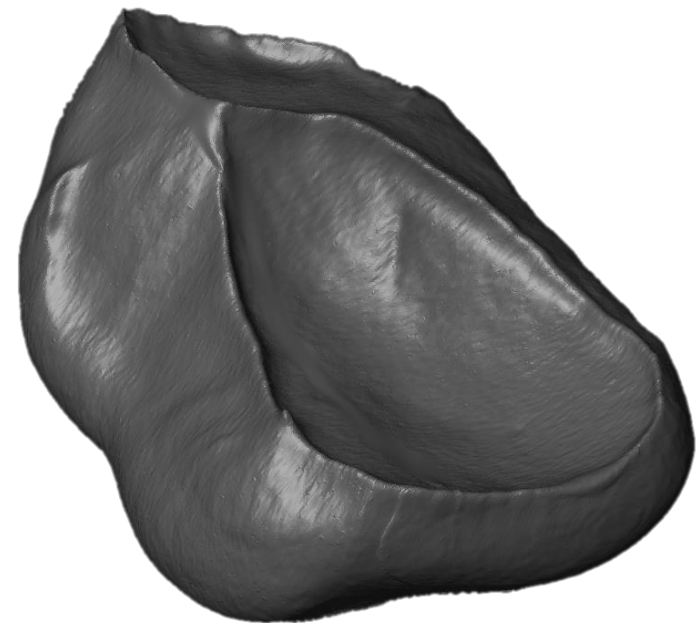
Phaner furcifer – ZMB 3838 LRM2

C)



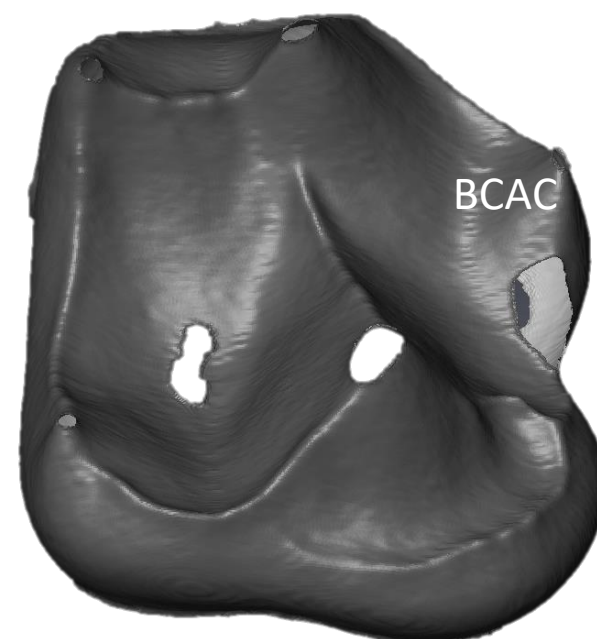
Cheirogaleus sp. – ZMB 4823 LRM2

D)

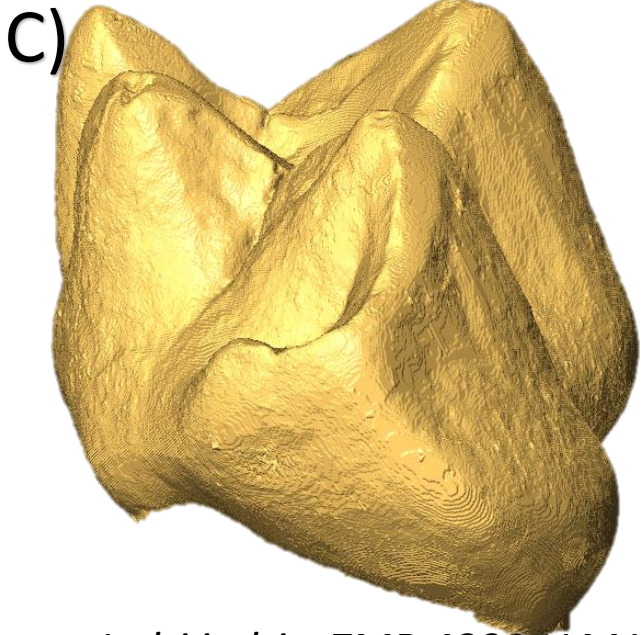


Cheirogaleus sp. – ZMB 35352 LLM1

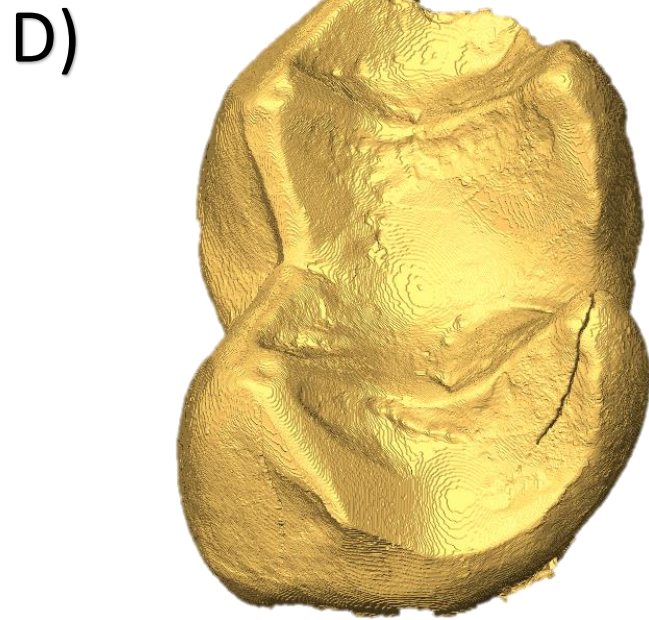
E)



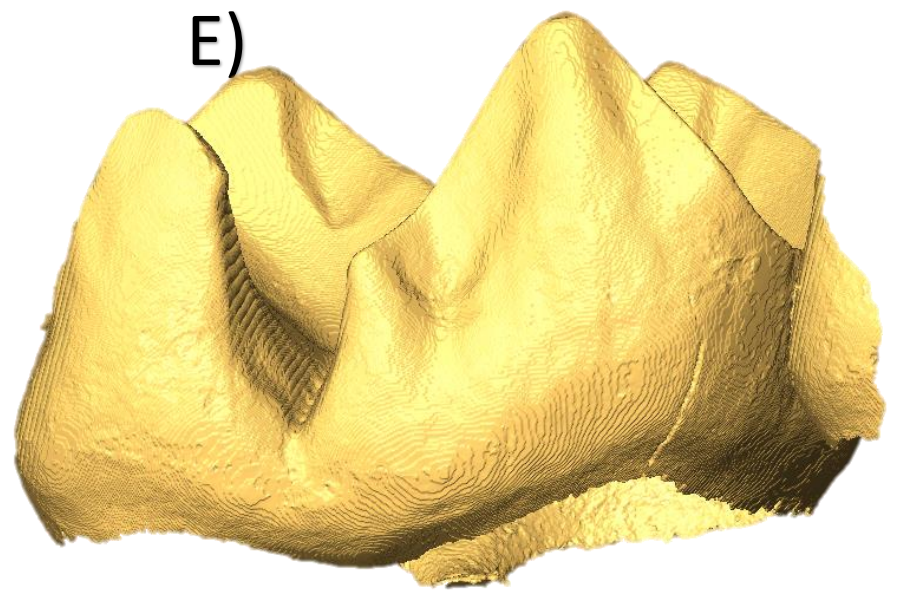
Phaner furcifer – ZMB 3838 LRM2



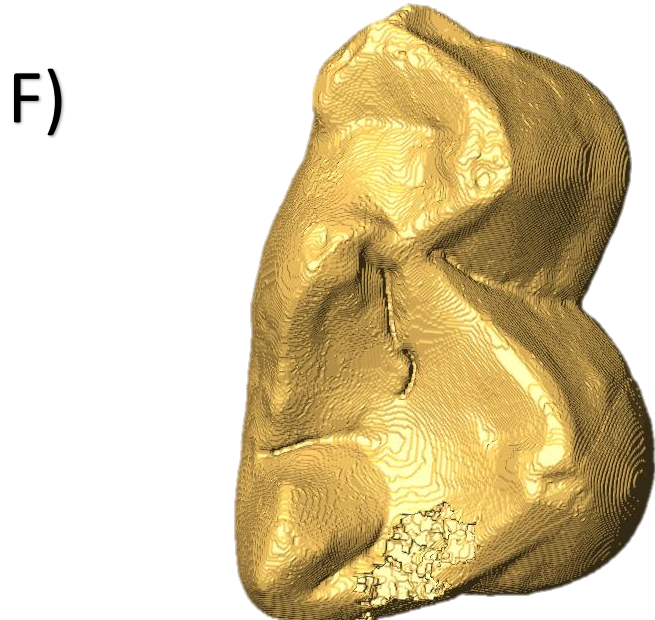
Indri indri – ZMB 4333 LLM1



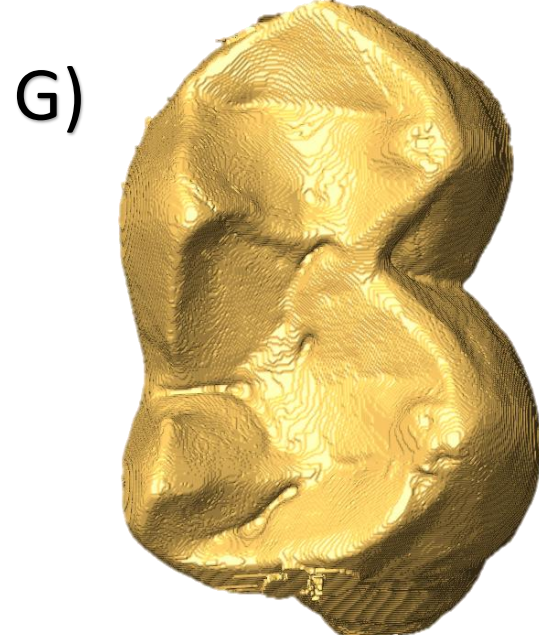
Indri indri – ZMB 4333 LLM2



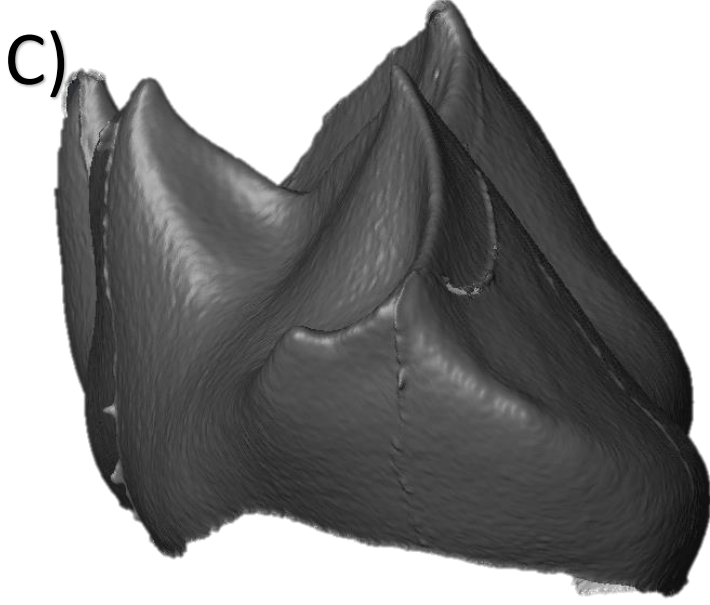
Avahi laniger – ZMB 44675 LLM2



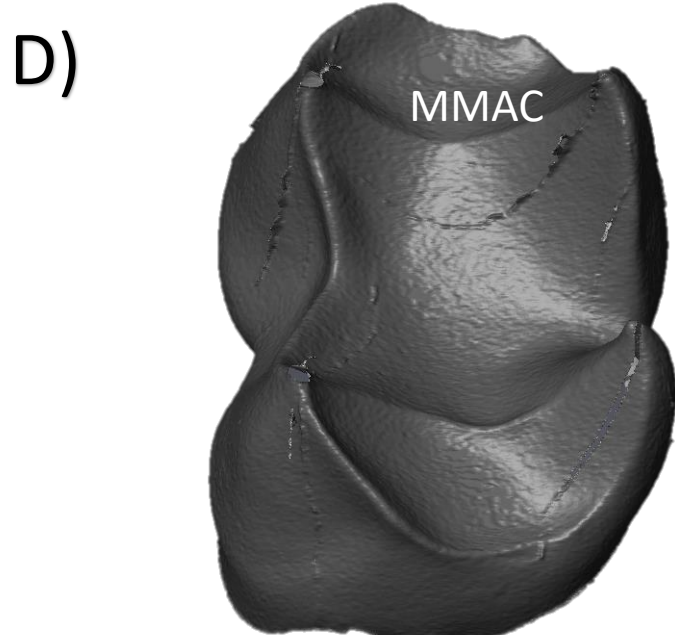
Propithecus diadema – ZMB 44687 LRM1



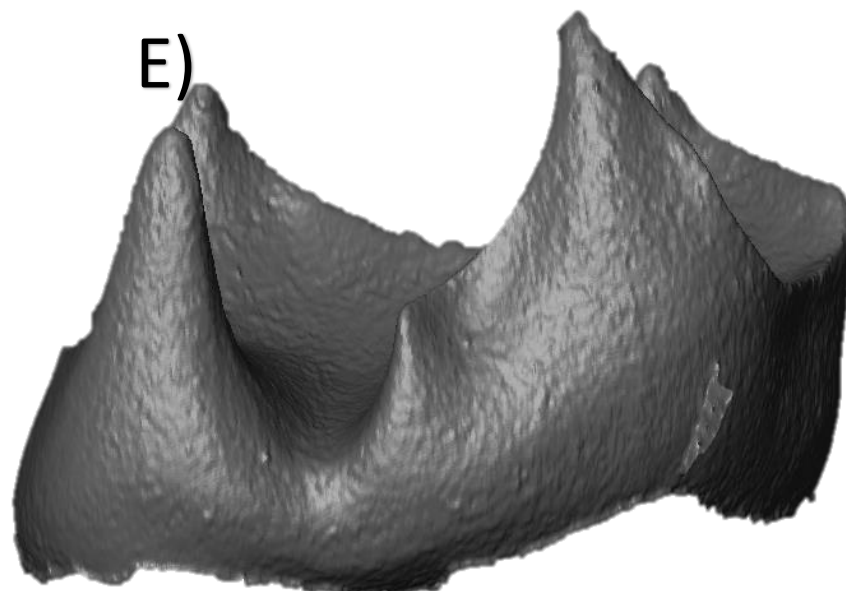
Propithecus diadema – ZMB 44687 LRM2



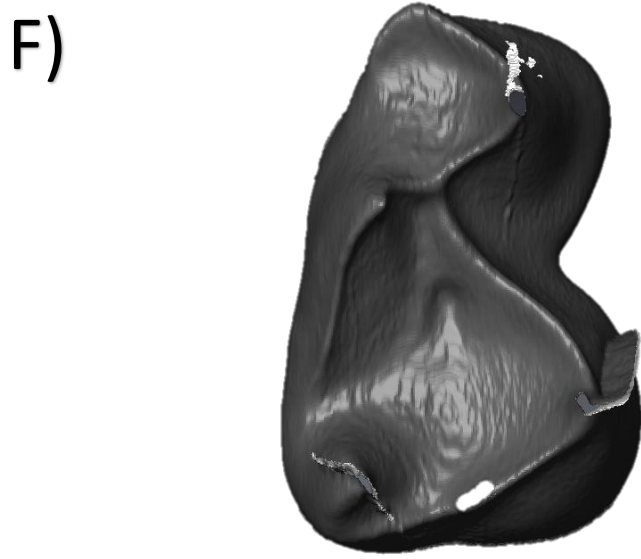
Indri indri – ZMB 4333 LLM1



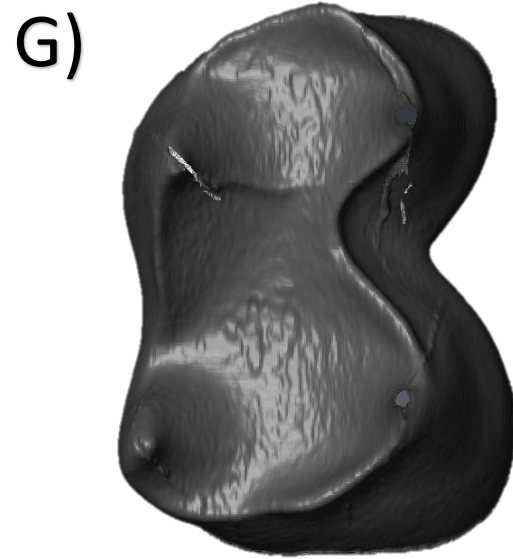
Indri indri – ZMB 4333 LLM2



Avahi laniger – ZMB 44675 LLM2

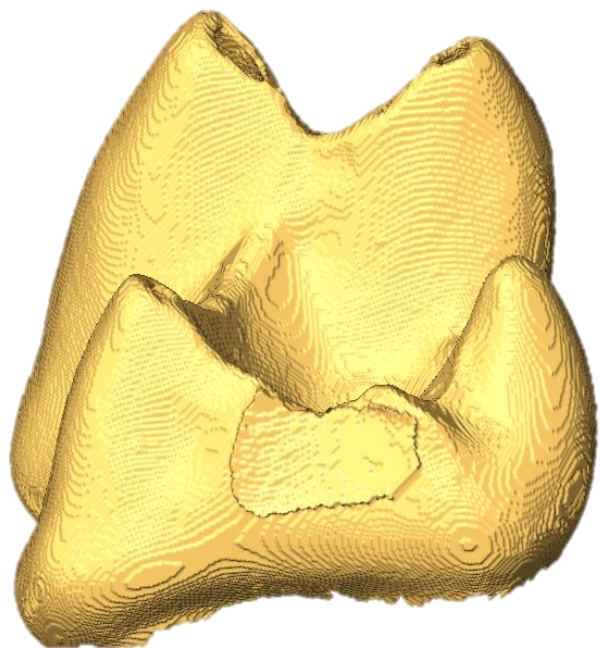


Propithecus diadema – ZMB 44687 LRM1



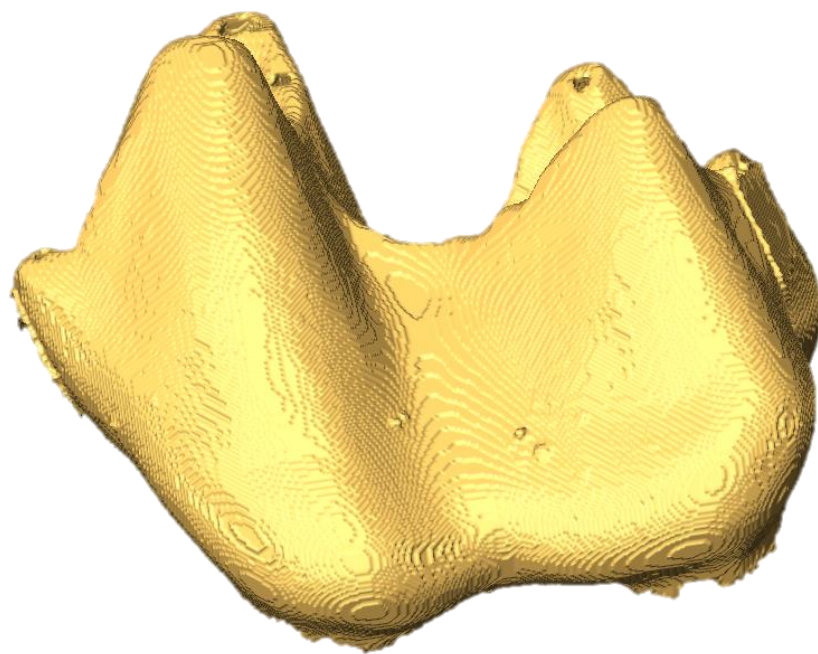
Propithecus diadema – ZMB 44687 LRM2

C)



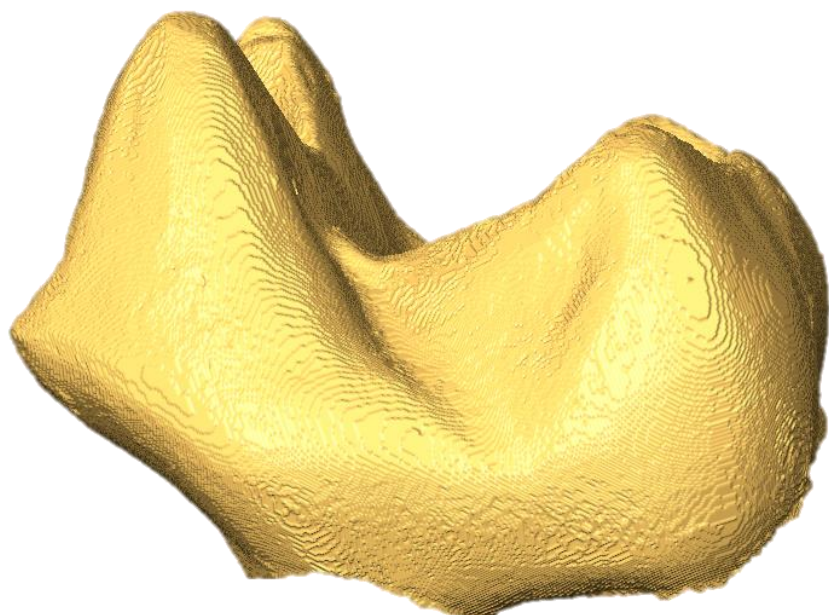
Galago senegalensis – ZMB 64278 LLM1

D)



Galago senegalensis – ZMB 64278 LLM1

E)



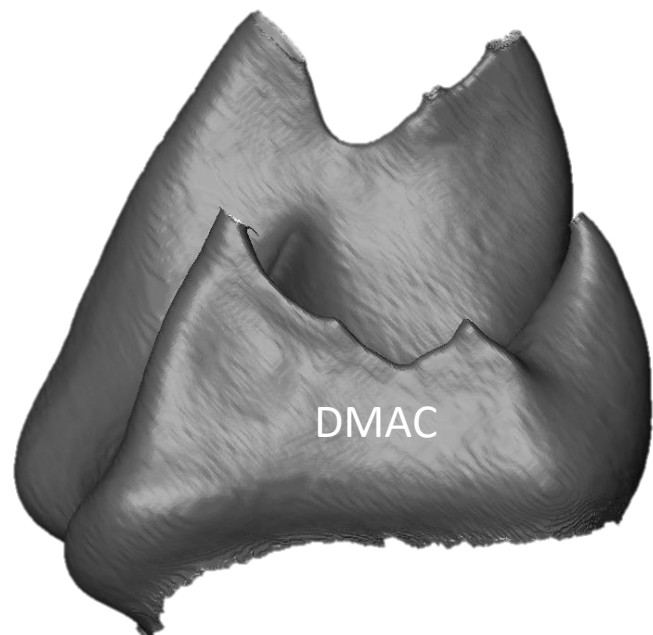
Euoticus elegantulus – ZMB 75692 LLM2

F)



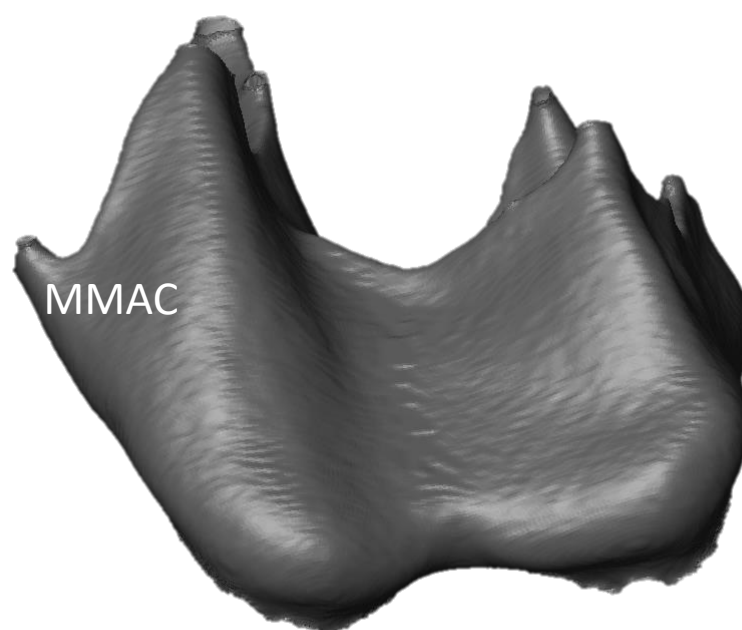
Euoticus elegantulus – ZMB 63728 LRM2

C)



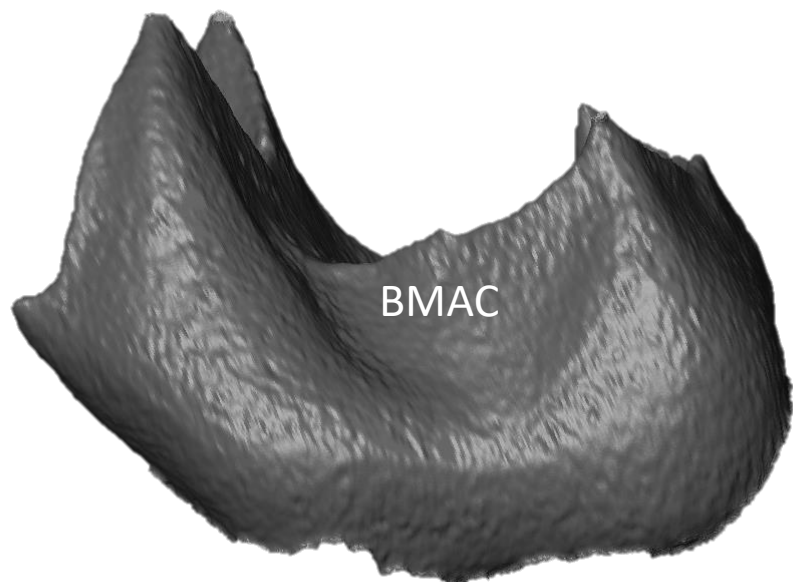
Galago senegalensis – ZMB 64278 LLM1

D)



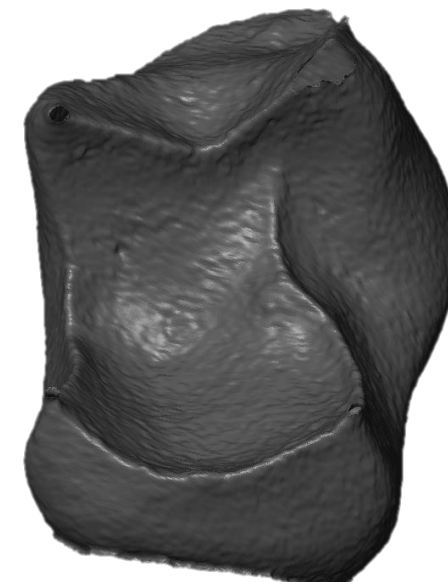
Galago senegalensis – ZMB 64278 LLM1

E)

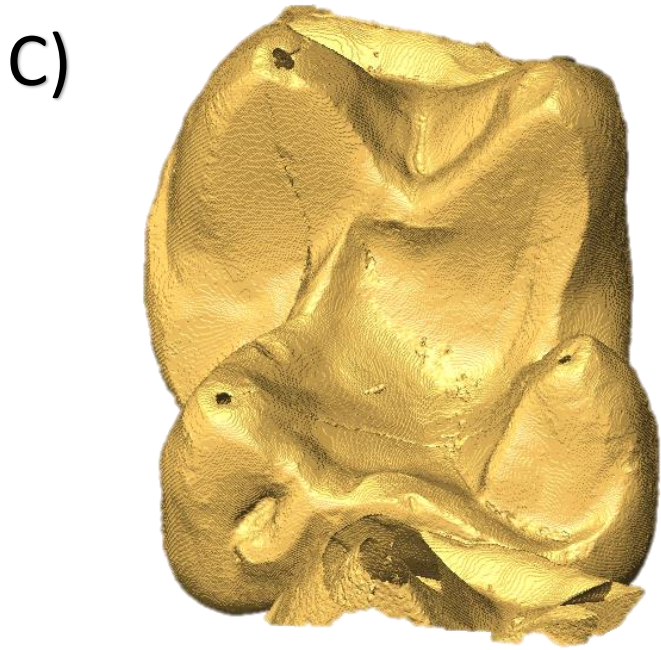


Euoticus elegantulus – ZMB 75692 LLM2

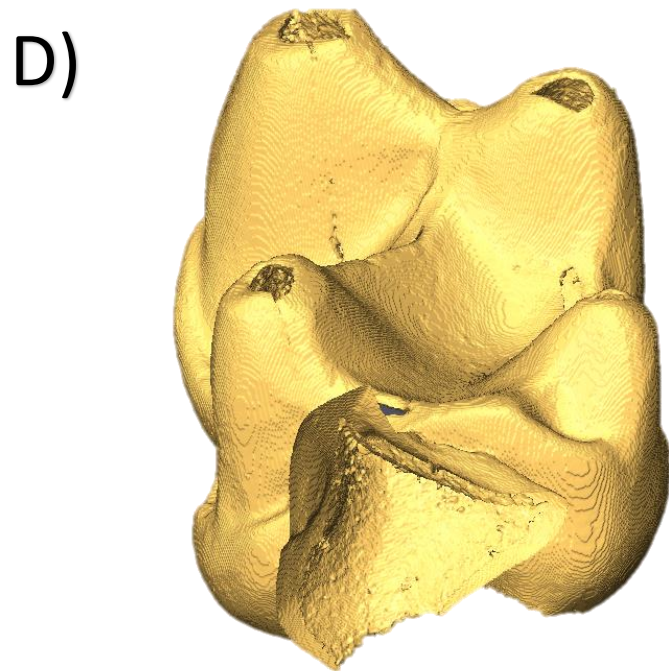
F)



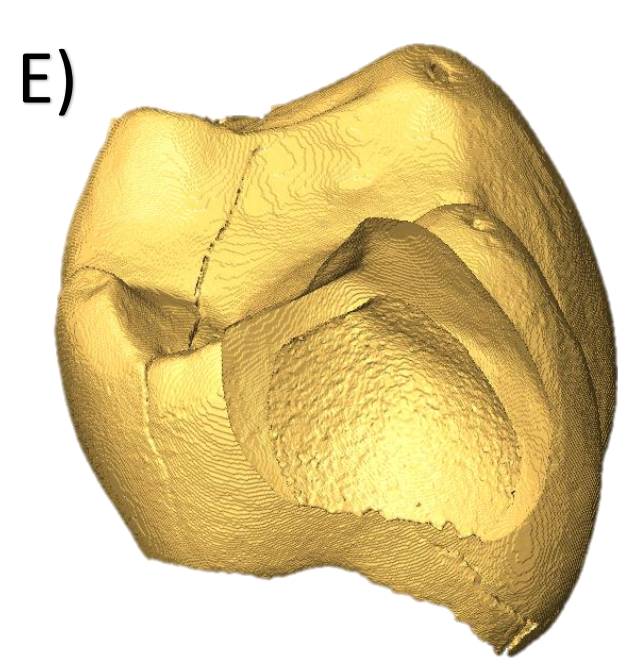
Euoticus elegantulus – ZMB 63728 LRM2



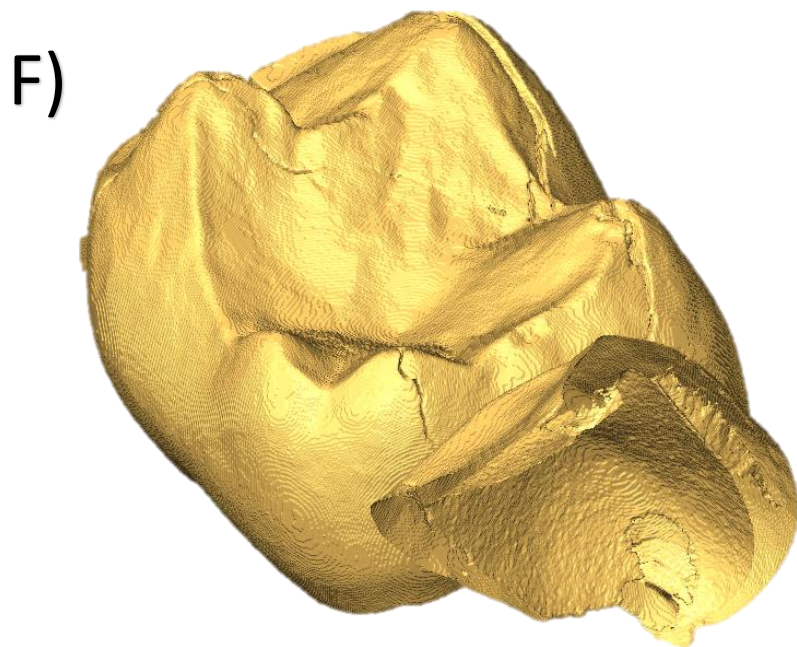
Loris tardigradus – ZMB 20822 LLM2



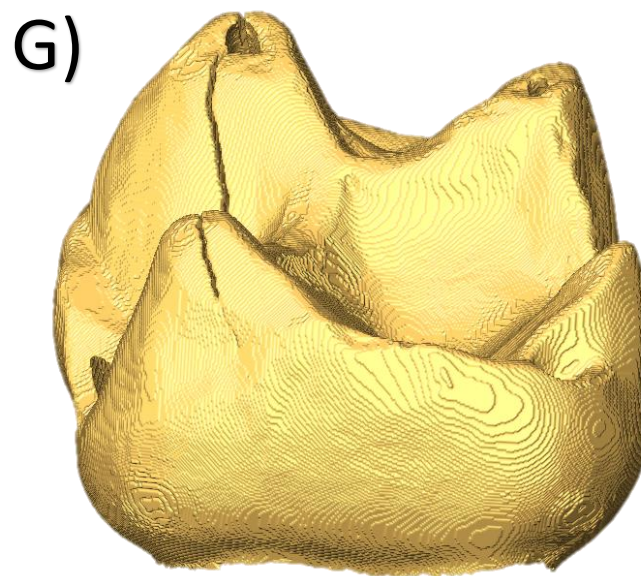
Arctocebus calabarensis – ZMB 12081 LLM2



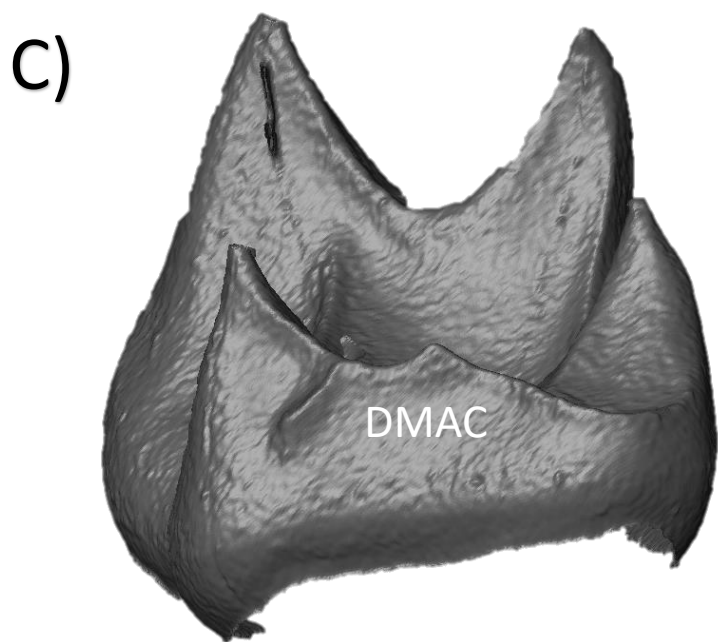
Perodicticus potto – ZMB 86040 LRM2



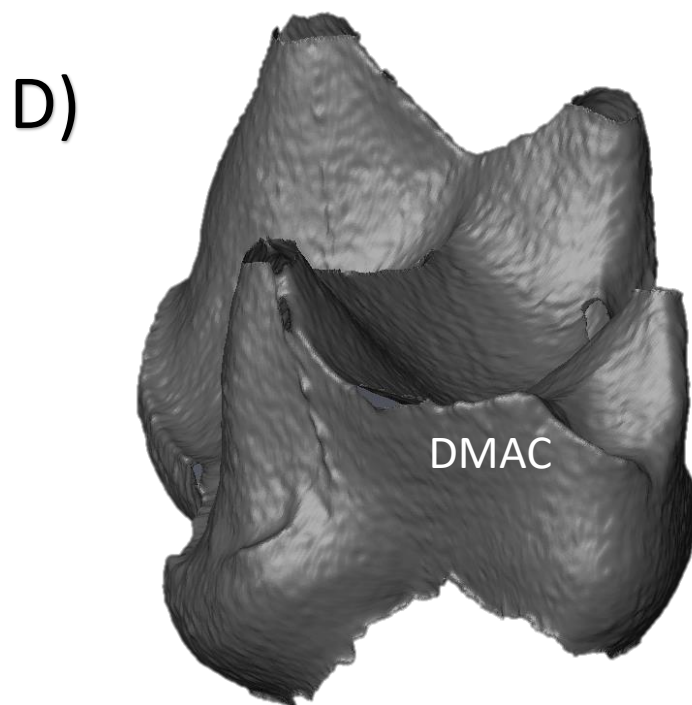
Perodicticus potto – ZMB 23441 LRM2



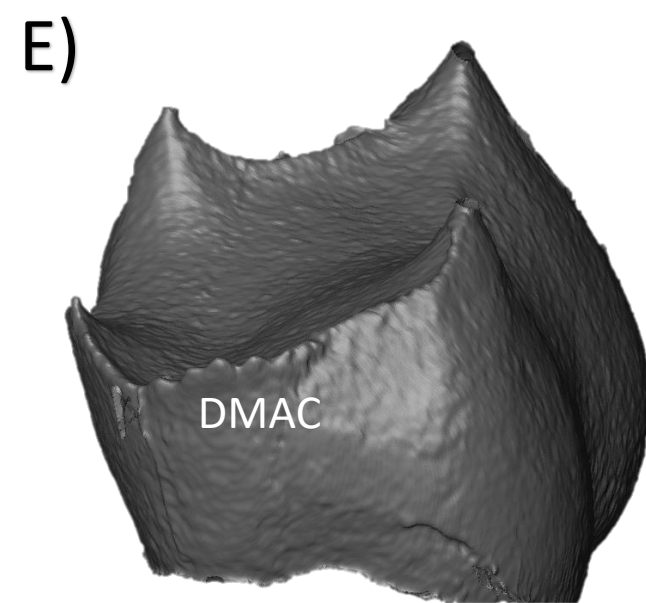
Nycticebus coucong – ZMB 34262 LLM2



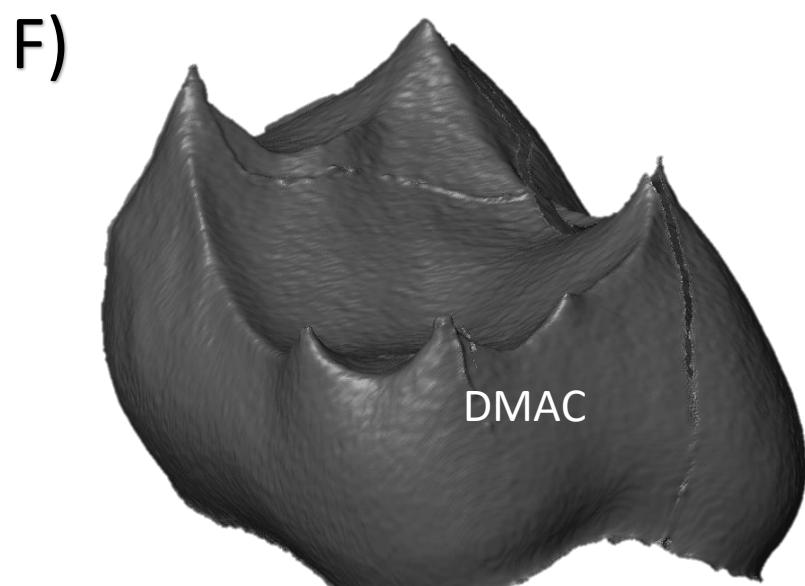
Loris tardigradus – ZMB 20822 LLM2



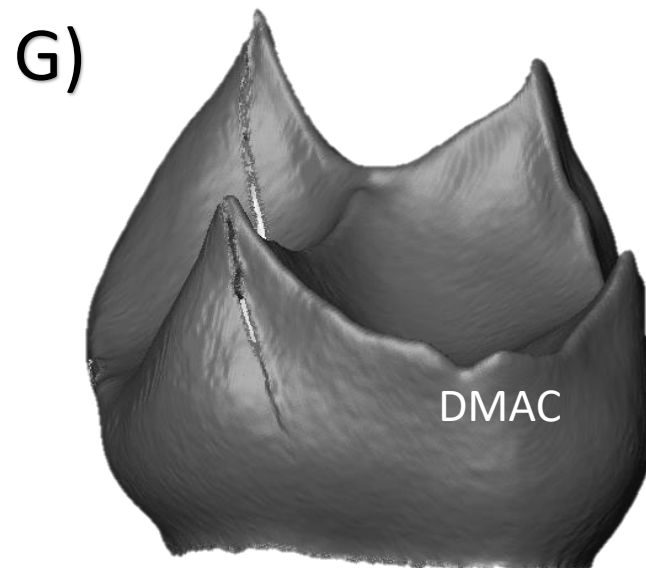
Arctocebus calabarensis – ZMB 12081 LLM2



Perodicticus potto – ZMB 86040 LRM2

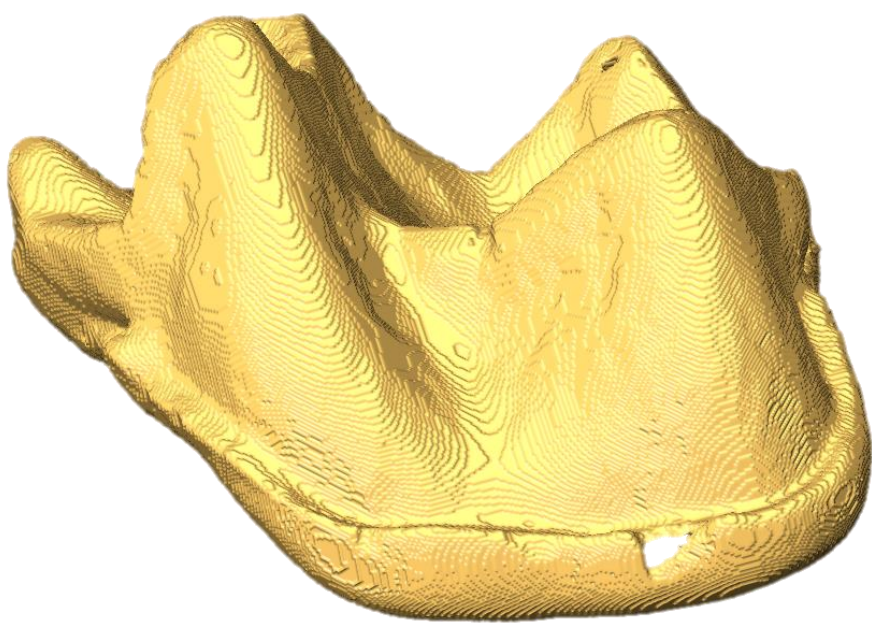


Perodicticus potto – ZMB 23441 LRM2



Nycticebus coucong – ZMB 34262 LLM2

C)



Tarsius spectrum – ZMB 91447 LLM1

D)



Tarsius spectrum – ZMB 91447 LLM2

E)



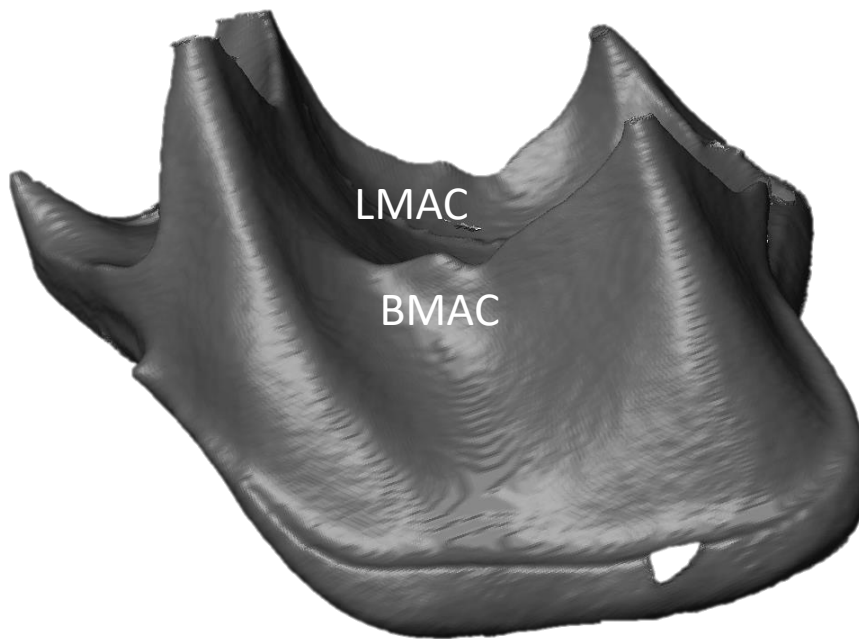
Tarsius spectrum – ZMB 5017 LRM1

F)



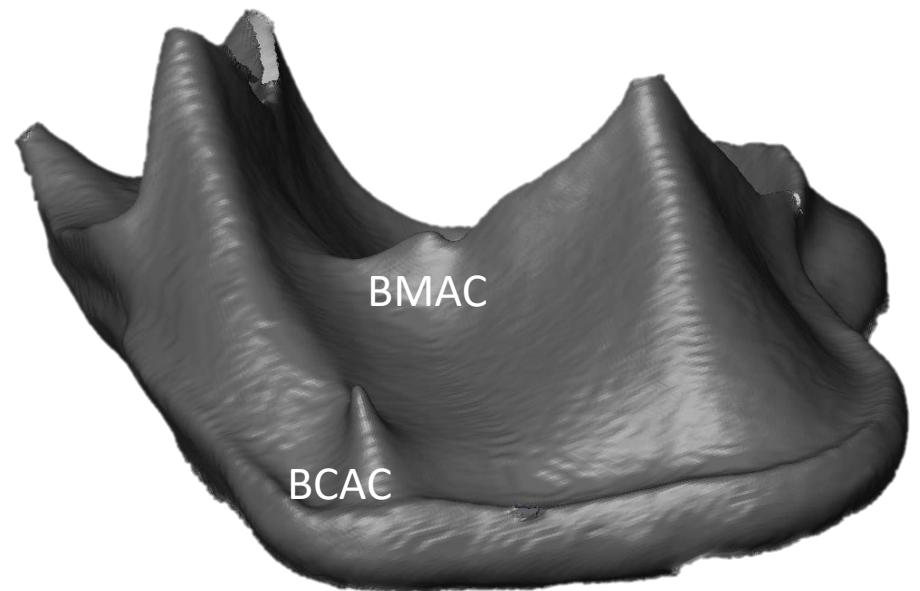
Tarsius syrichta – ZMB 5306 LRM2

C)



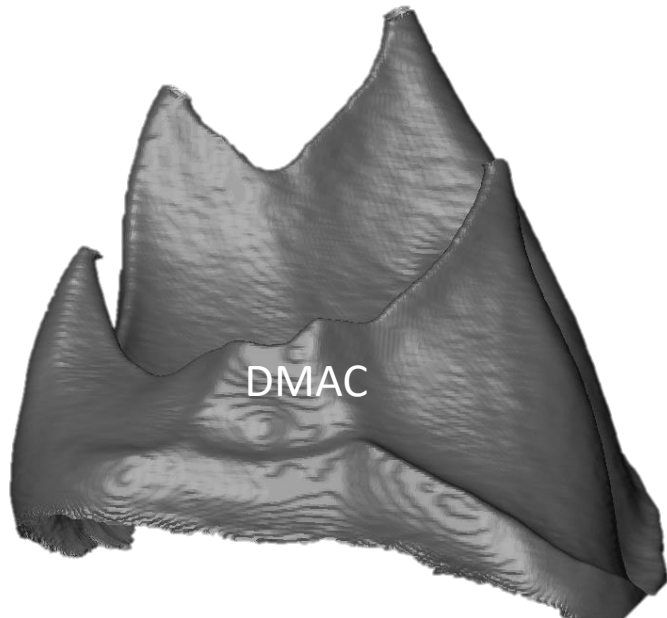
Tarsius spectrum – ZMB 91447 LLM1

D)



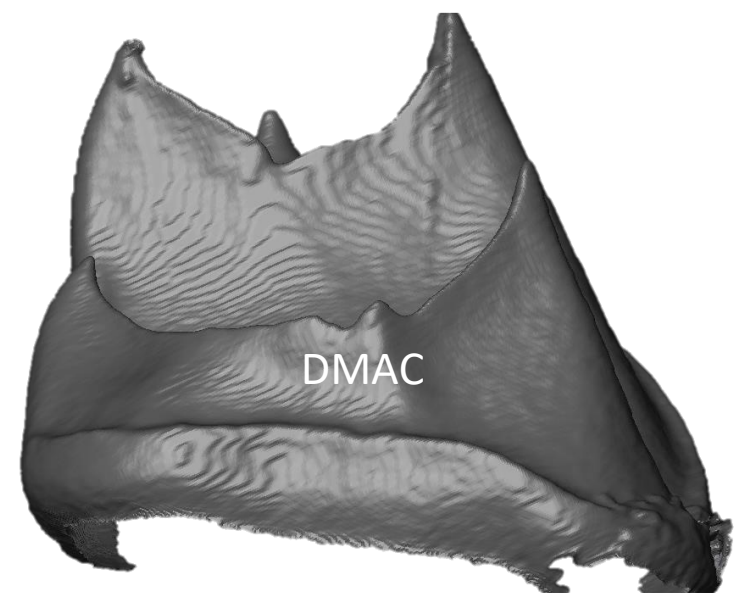
Tarsius spectrum – ZMB 91447 LLM2

E)



Tarsius spectrum – ZMB 5017 LRM1

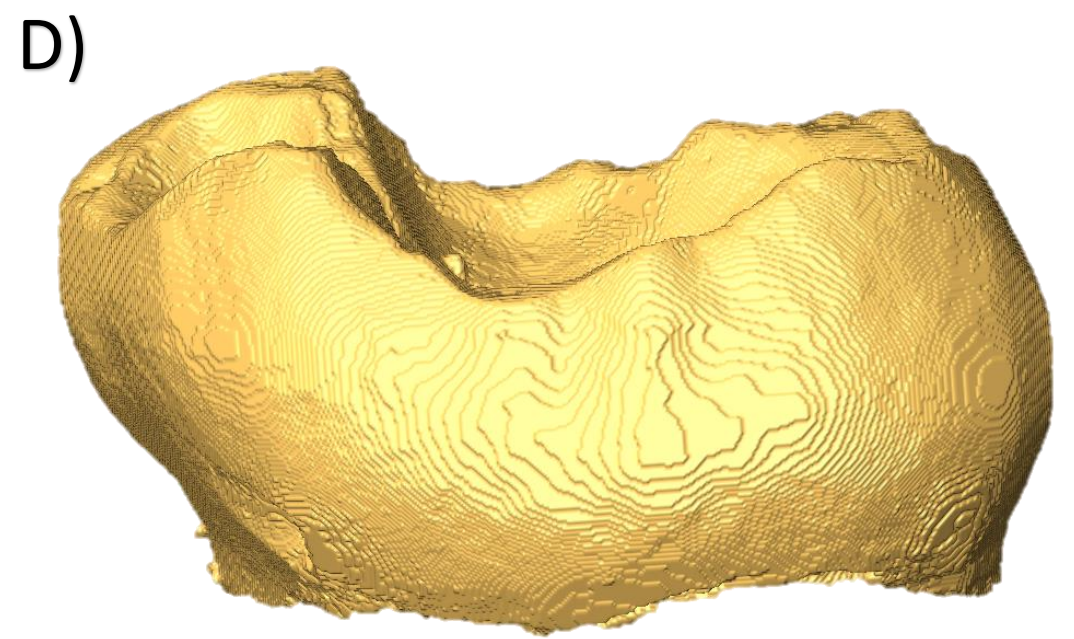
F)



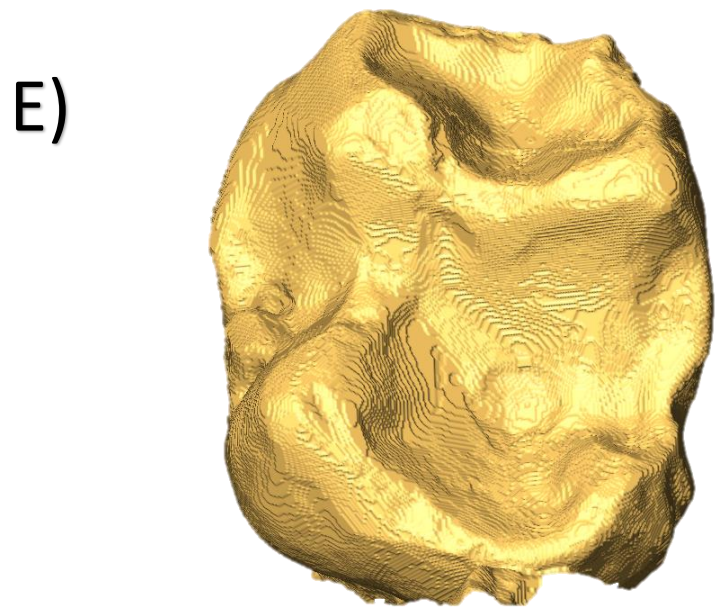
Tarsius syrichta – ZMB 5306 LRM2



Cebulla pygmaea – ZMB 5655 LLM1



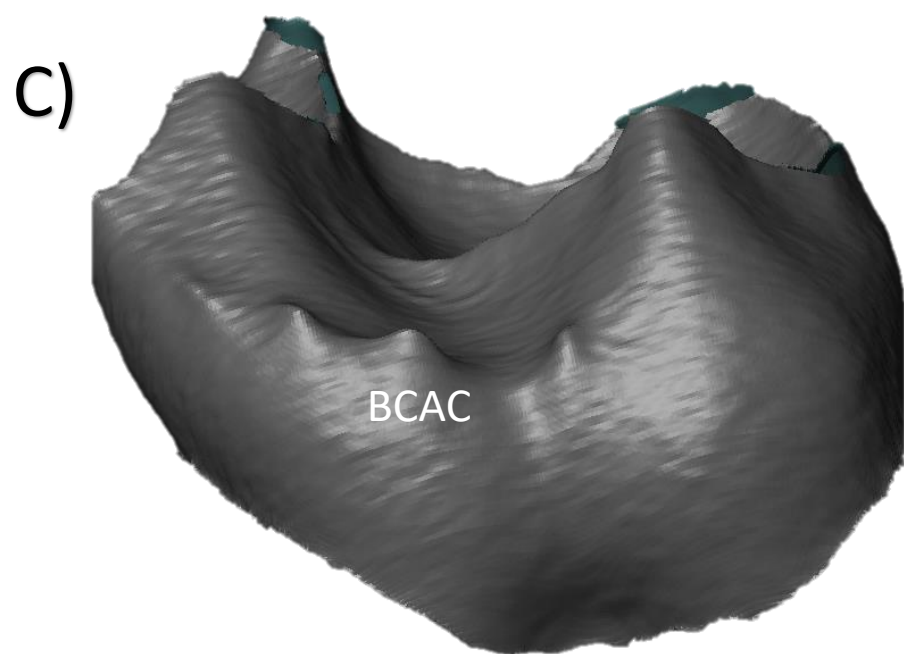
Leontopithecus rosalia – ZMB 300 LRM2



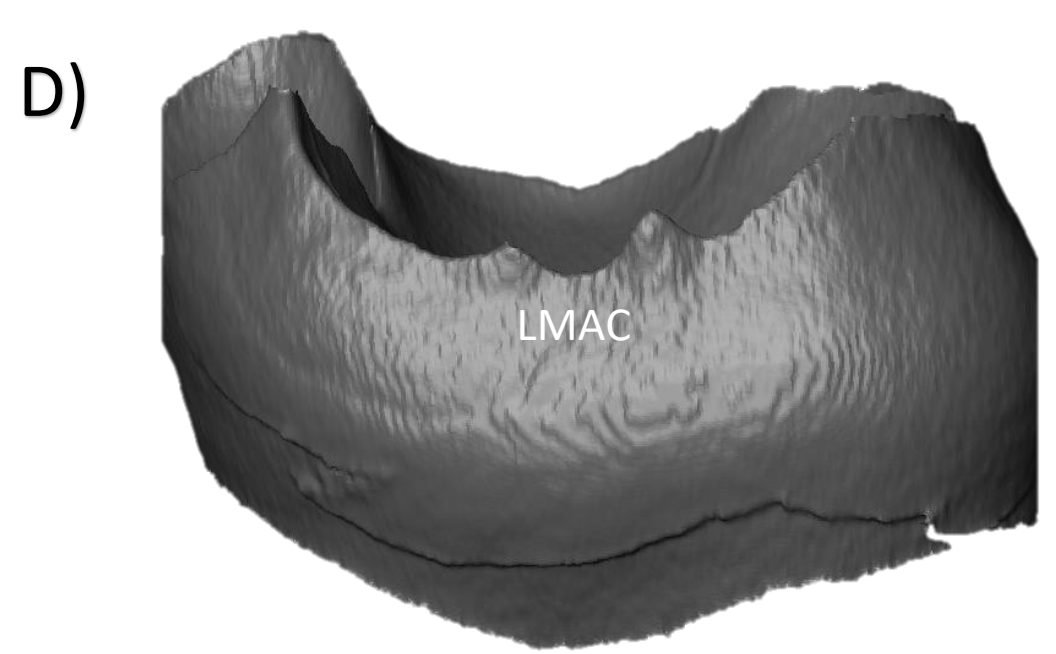
Saguinas oedipus – ZMB 297 LLM1



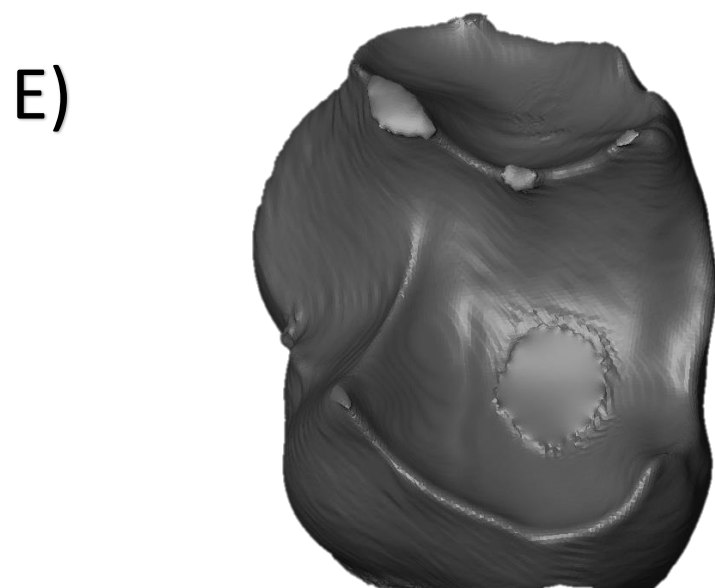
Callithrix jacchus – ZMB 36453 LRM2



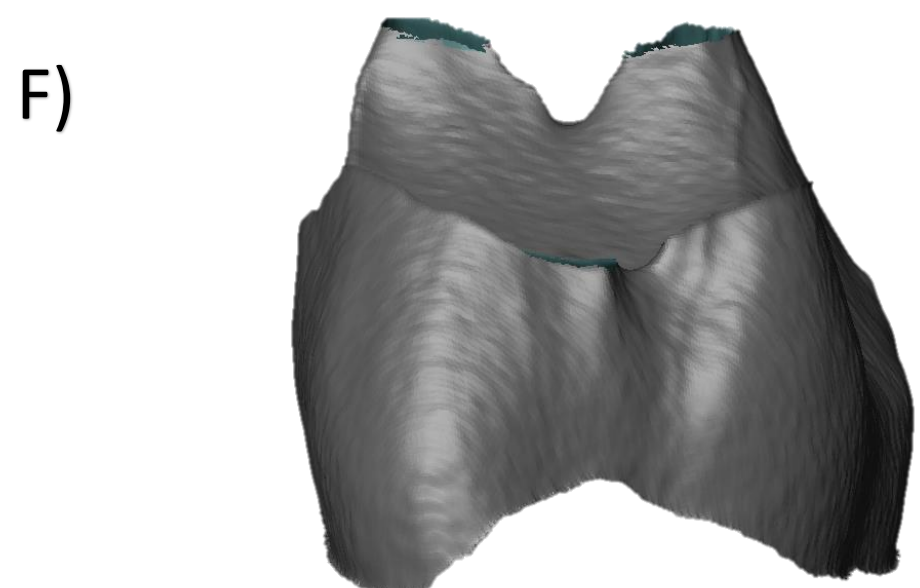
Cebulla pygmaea – ZMB 5655 LLM1



Leontopithecus rosalia – ZMB 300 LRM2

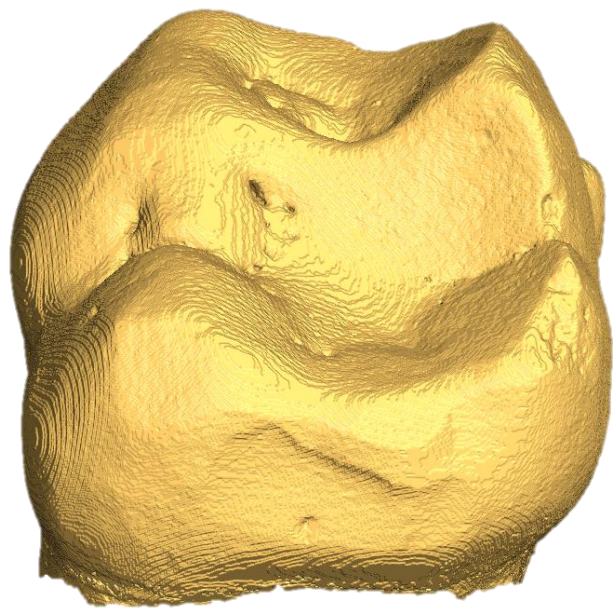


Saguinas oedipus – ZMB 297 LLM1



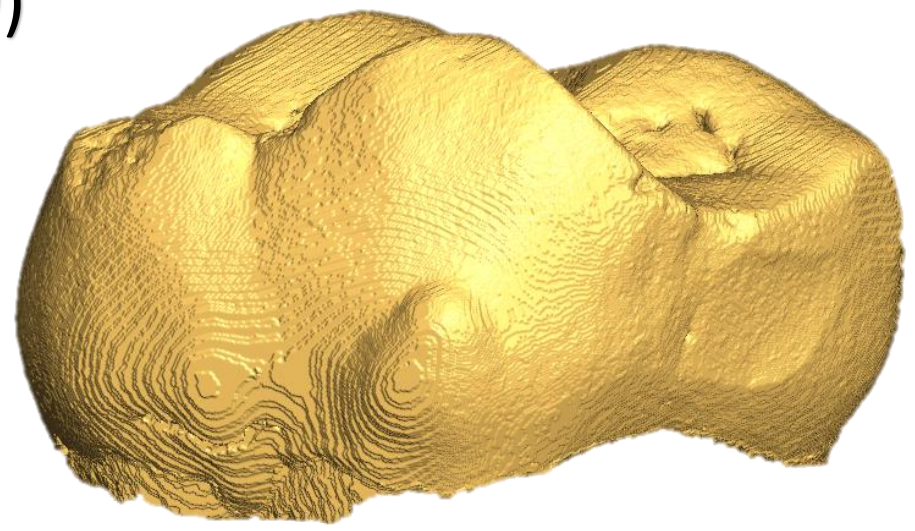
Callithrix jacchus – ZMB 36453 LRM2

C)



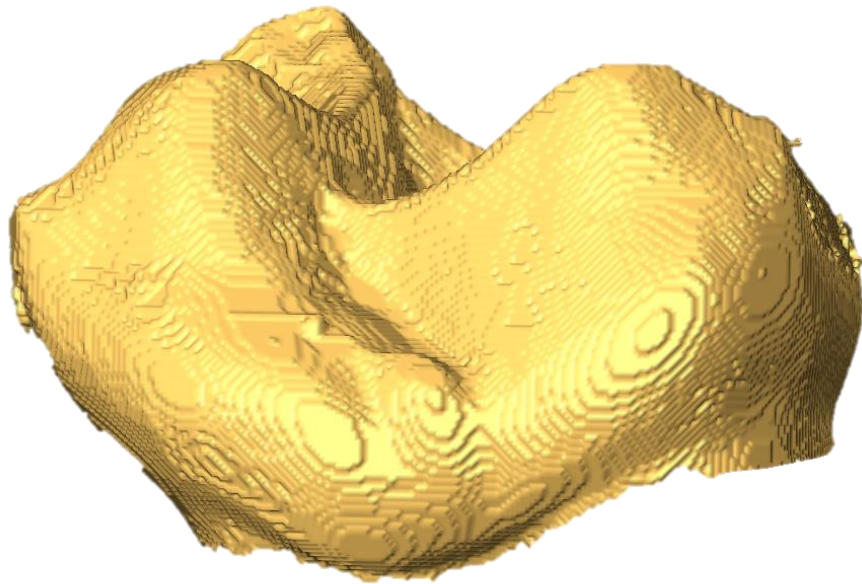
Sapajus apella– ZMB 7888 LLM1

D)



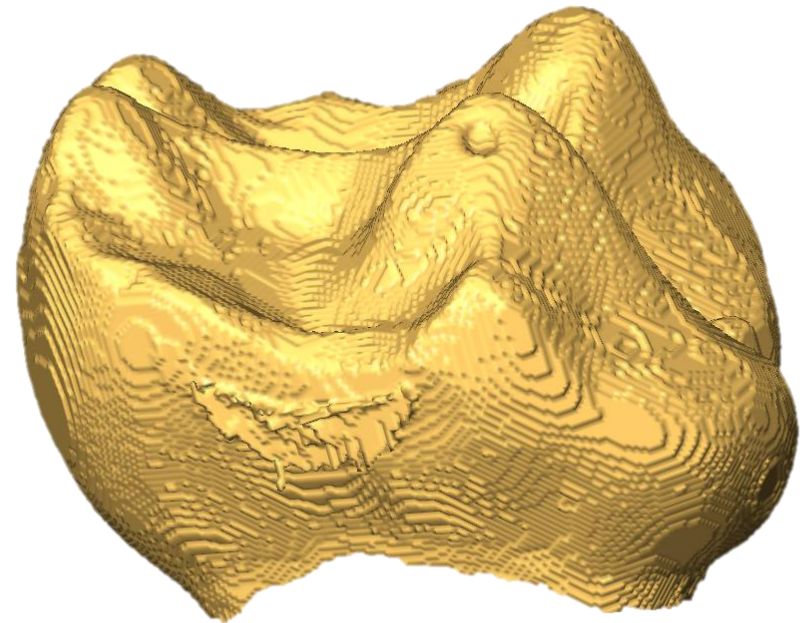
Sapajus apella– ZMB 7888 LLM1

E)



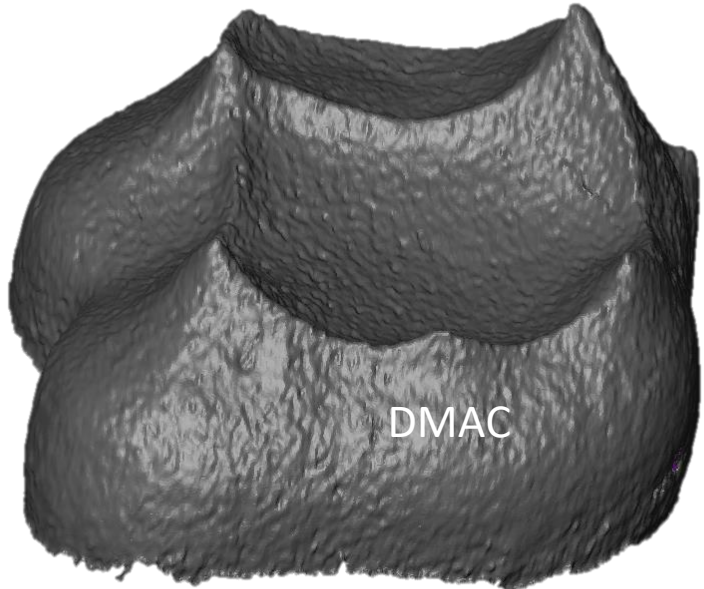
Saimiri sp. – ZMB 35779 LLM2

F)



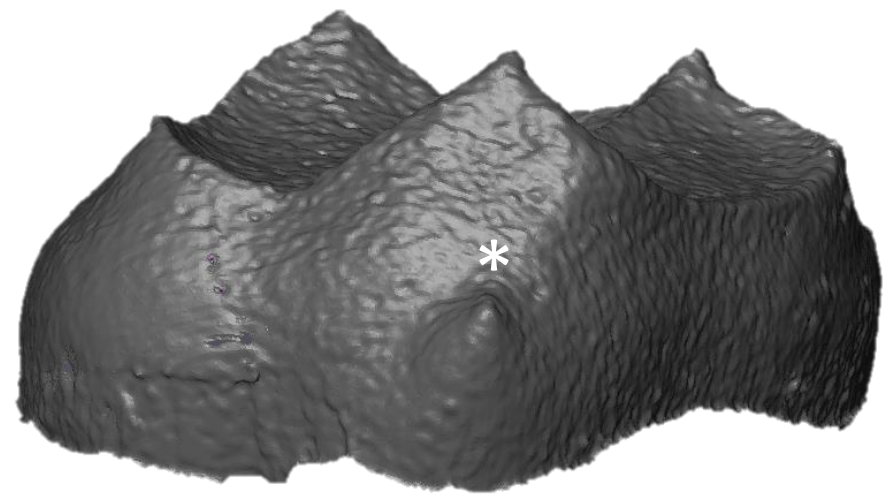
Saimiri sp. – ZMB 35779 LLM1

C)



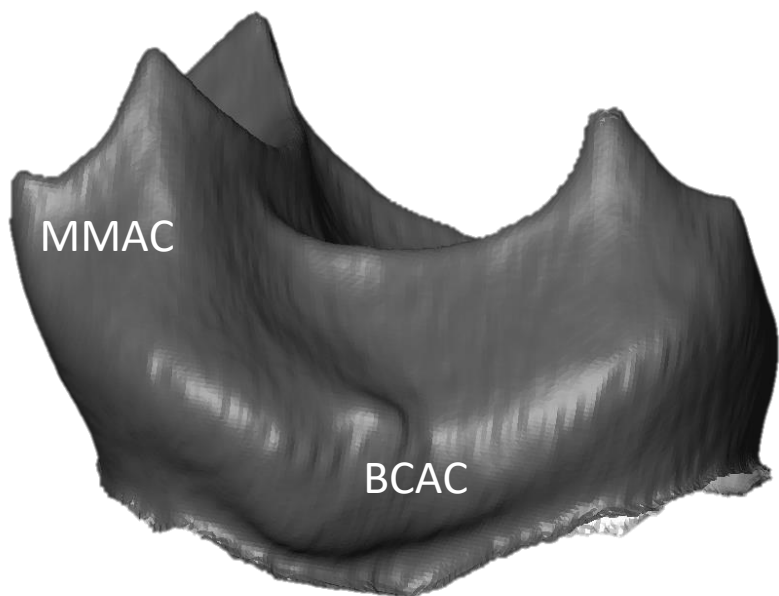
Sapajus apella– ZMB 7888 LLM1

D)



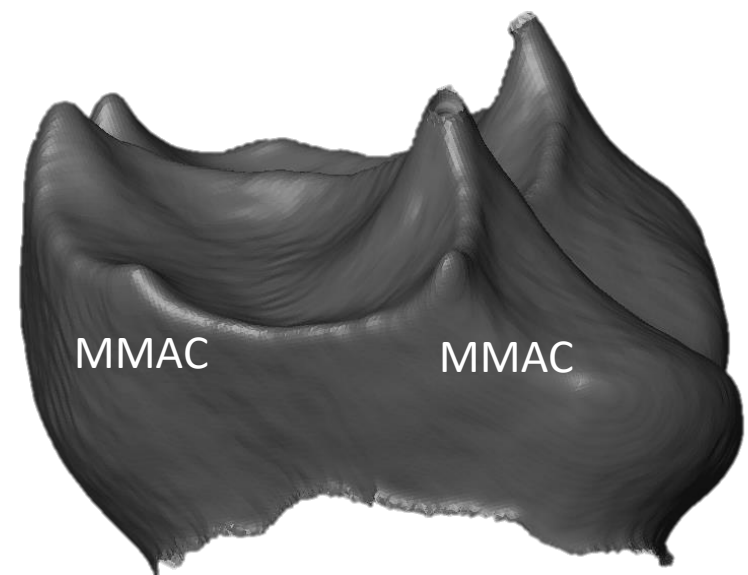
Sapajus apella– ZMB 7888 LLM1

E)



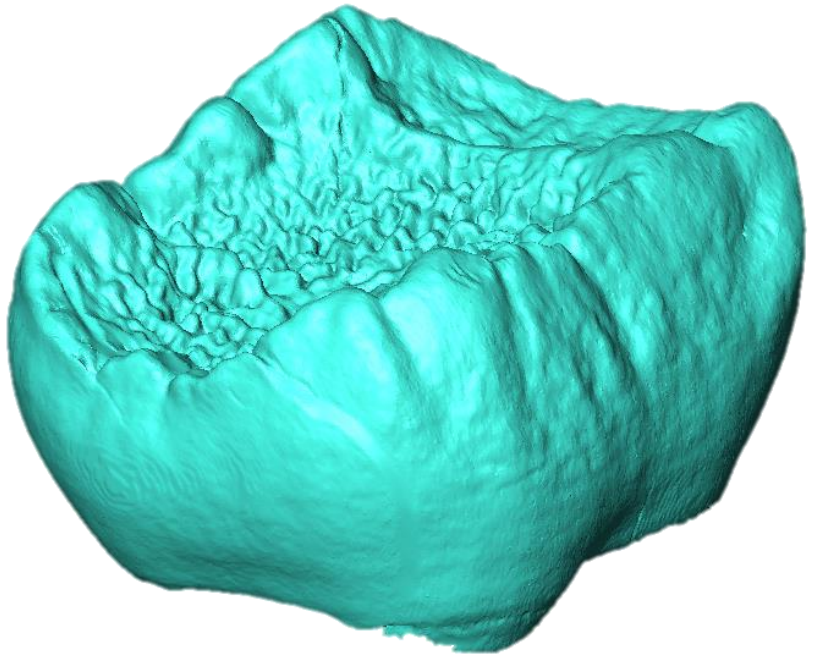
Saimiri sp. – ZMB 35779 LLM2

F)



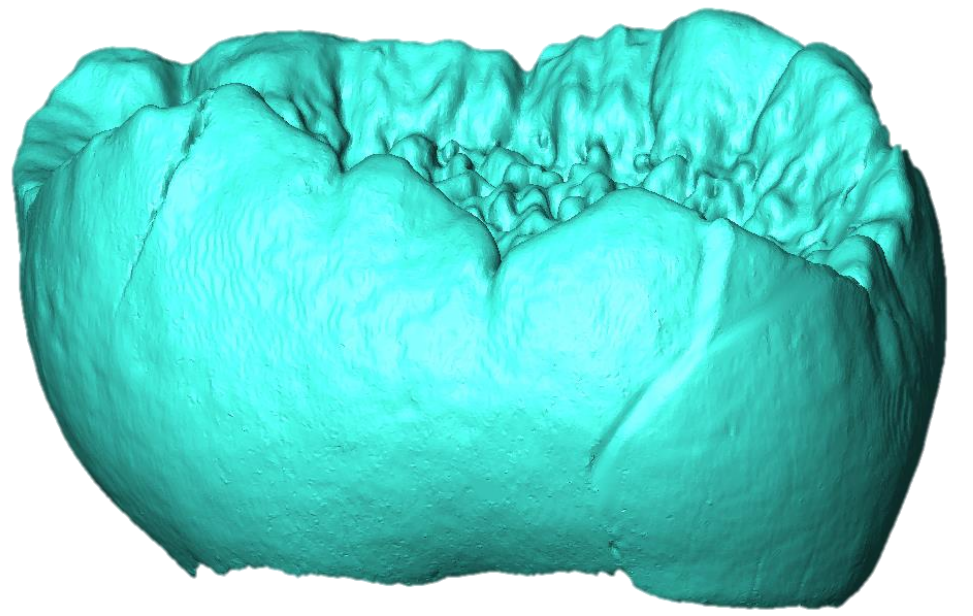
Saimiri sp. – ZMB 35779 LLM1

C)



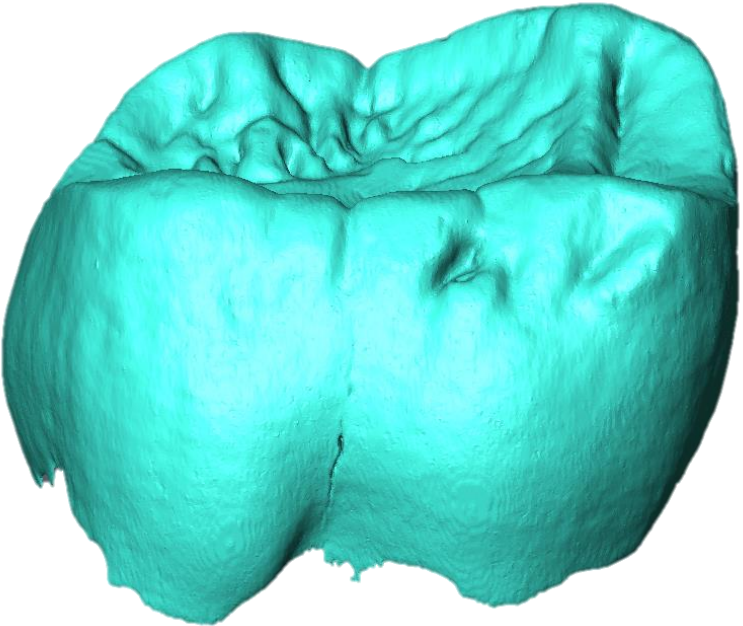
Cacajao calvus – ZMB 18480 LRM2

D)



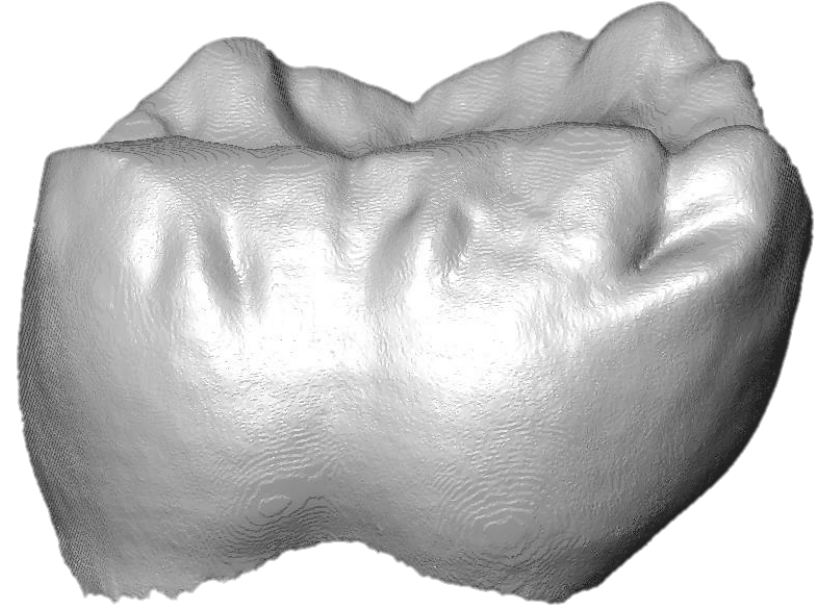
Cacajao calvus – ZMB 18480 LRM2

E)



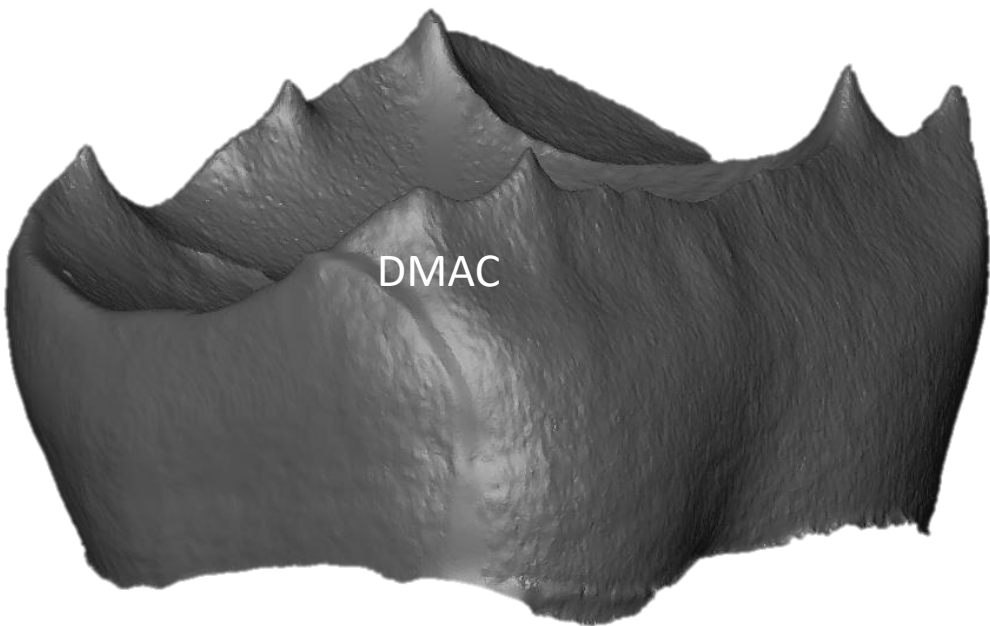
Chiropotes satanas – ZMB 85177 LRM1

F)



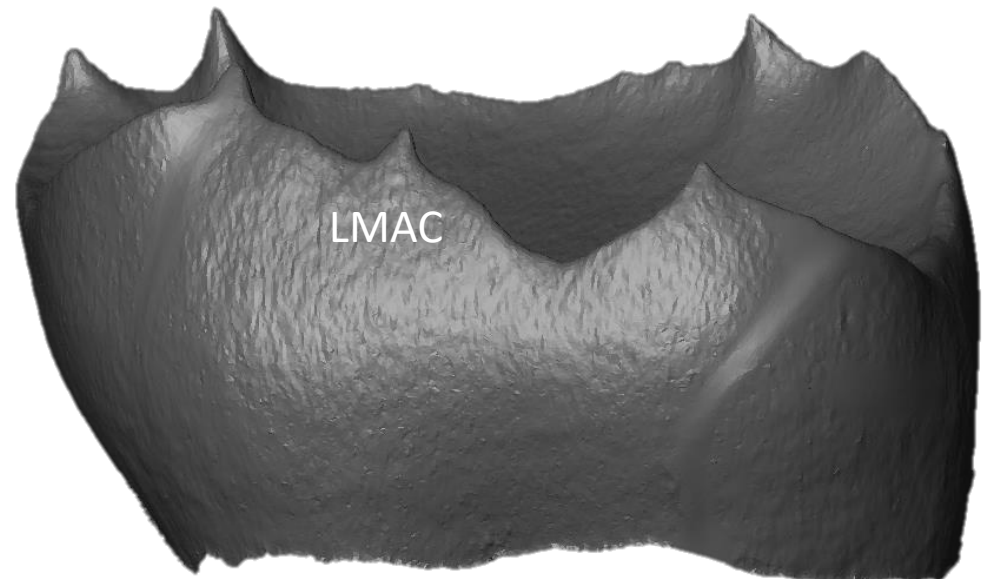
Chiropotes satanas – ZMB 16485 LLM2

C)



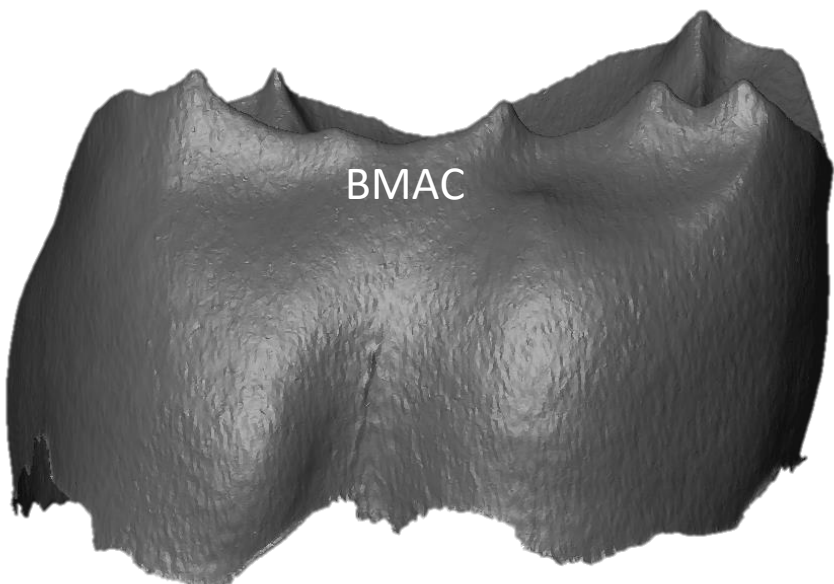
Cacajao calvus – ZMB 18480 LRM2

D)



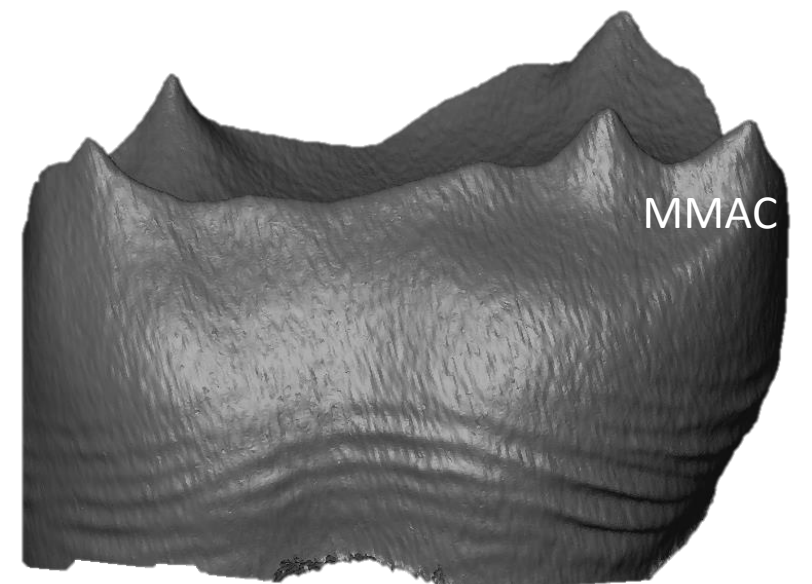
Cacajao calvus – ZMB 18480 LRM2

E)

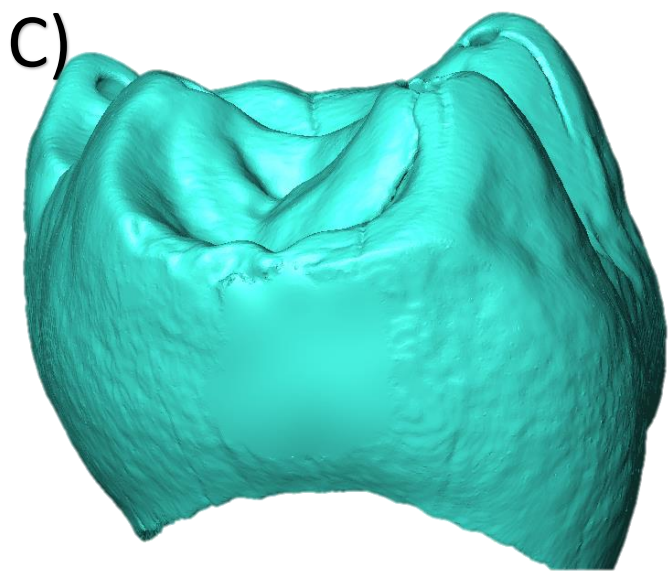


Chiropotes satanas – ZMB 85177 LRM1

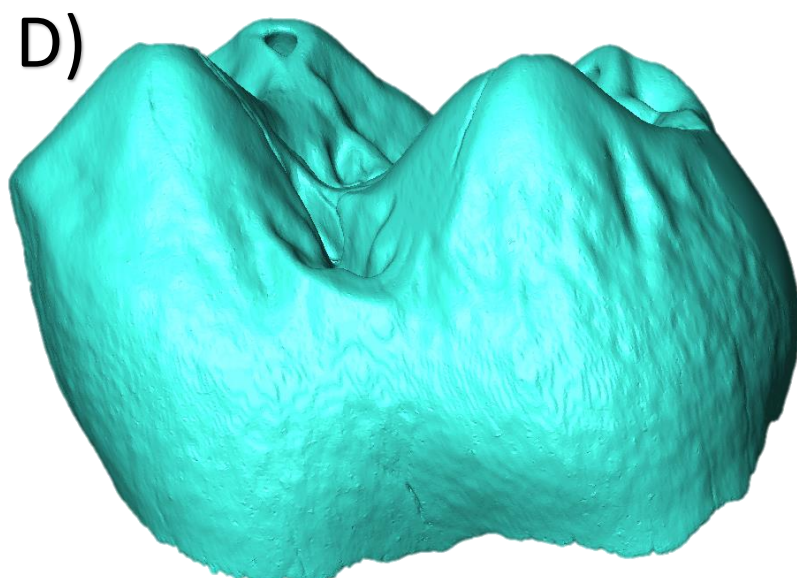
F)



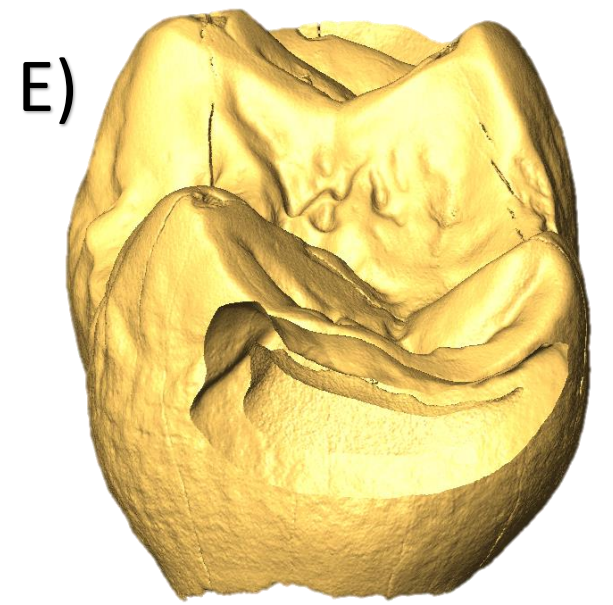
Chiropotes satanas – ZMB 16485 LLM2



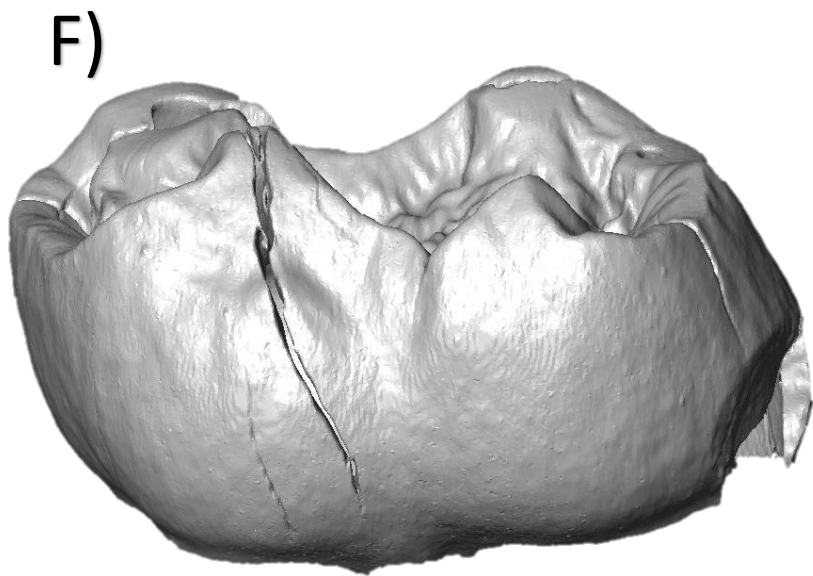
Callicebus molock – ZMB 258 LLM1



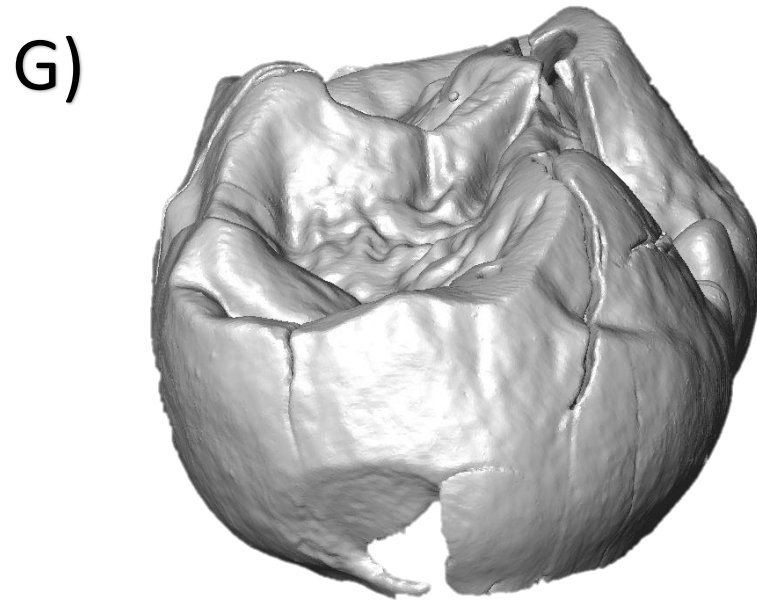
Callicebus molock – ZMB 258 LLM1



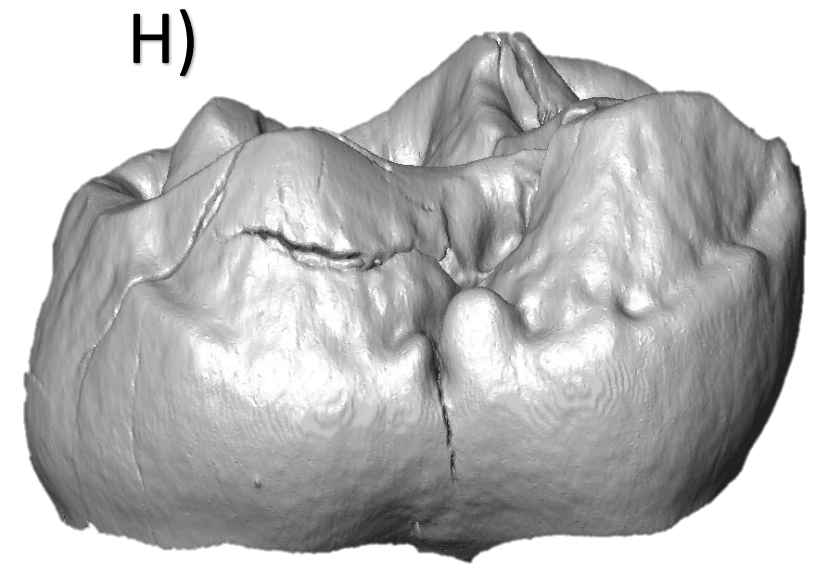
Callicebus molock – ZMB 258 LLM2



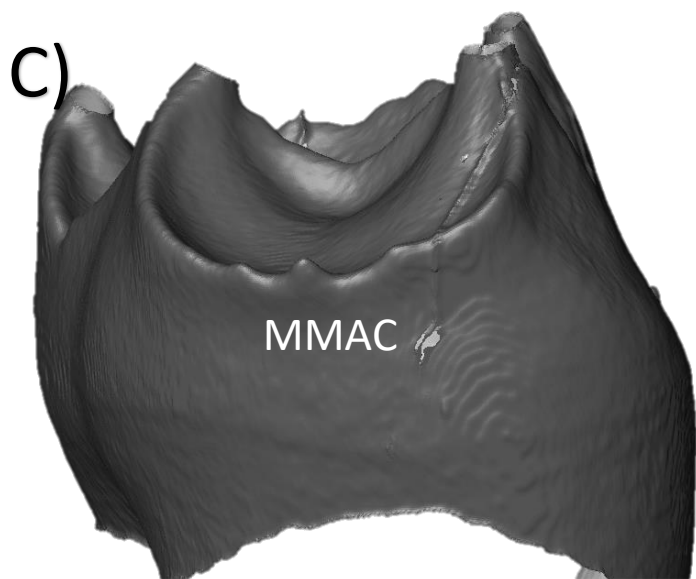
Callicebus molock – ZMB 261 LRM2



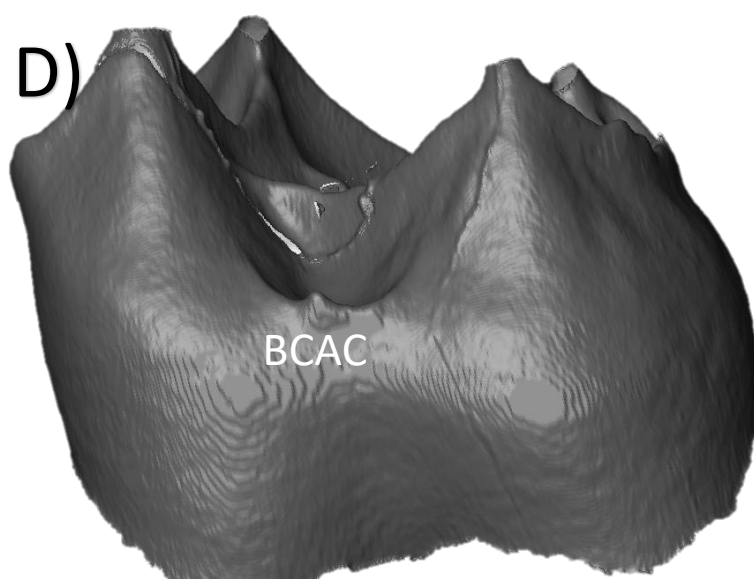
Callicebus molock – ZMB 261 LRM2



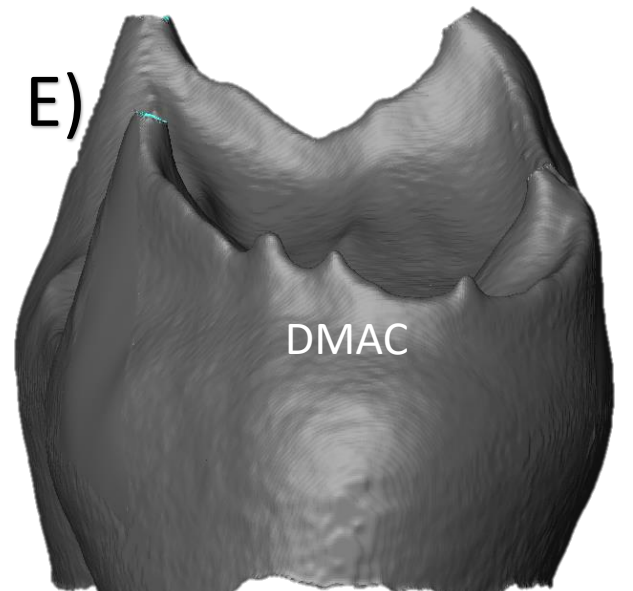
Callicebus molock – ZMB 261 LRM2



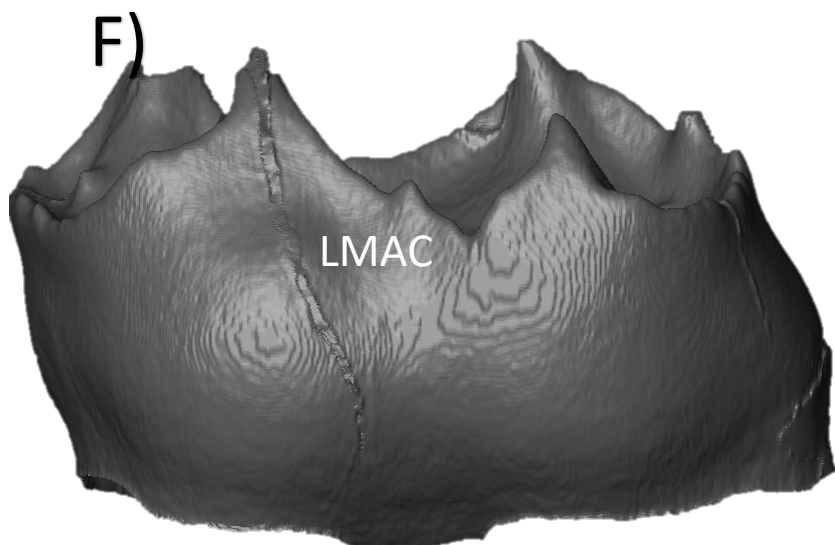
Callicebus molock – ZMB 258 LLM1



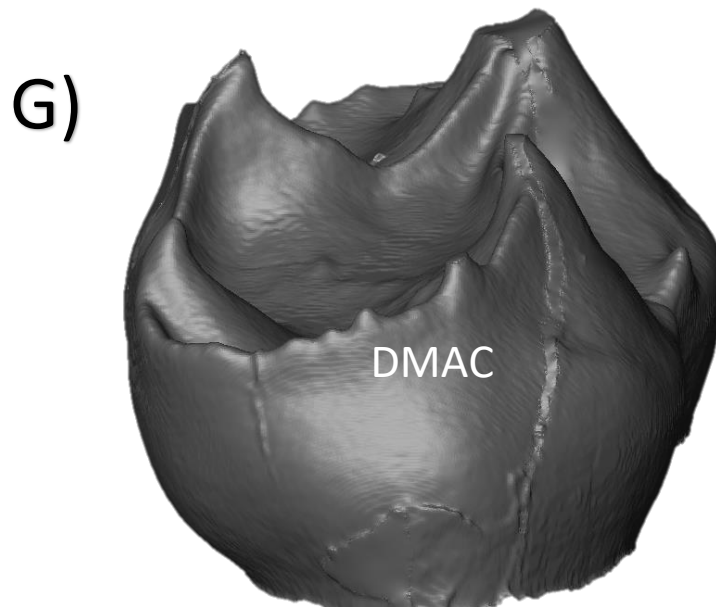
Callicebus molock – ZMB 258 LLM1



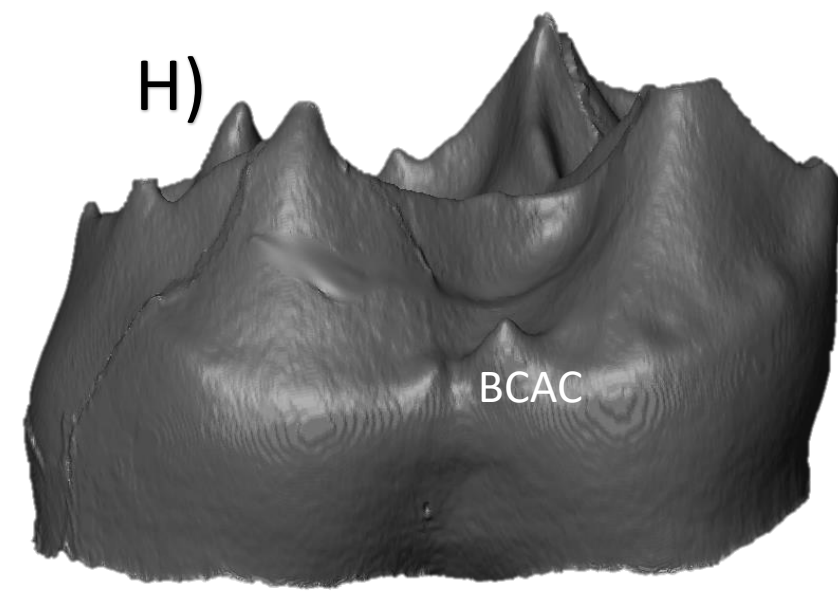
Callicebus molock – ZMB 258 LLM2



Callicebus molock – ZMB 261 LRM2

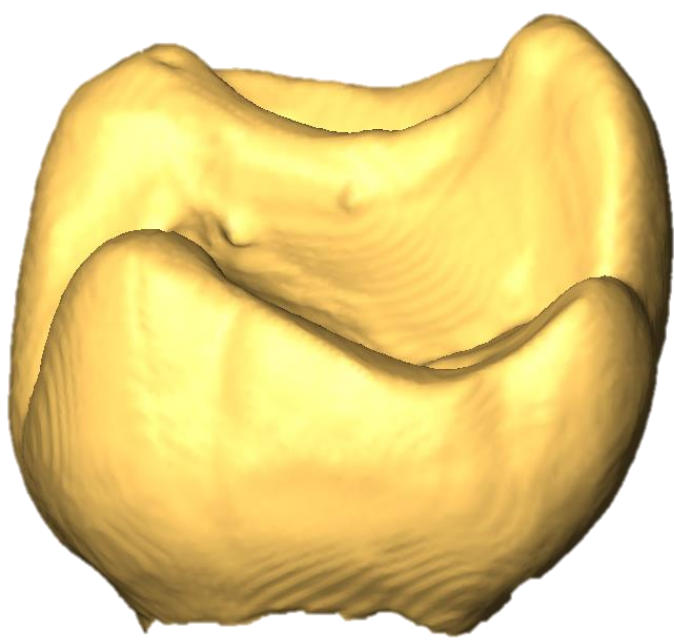


Callicebus molock – ZMB 261 LRM2



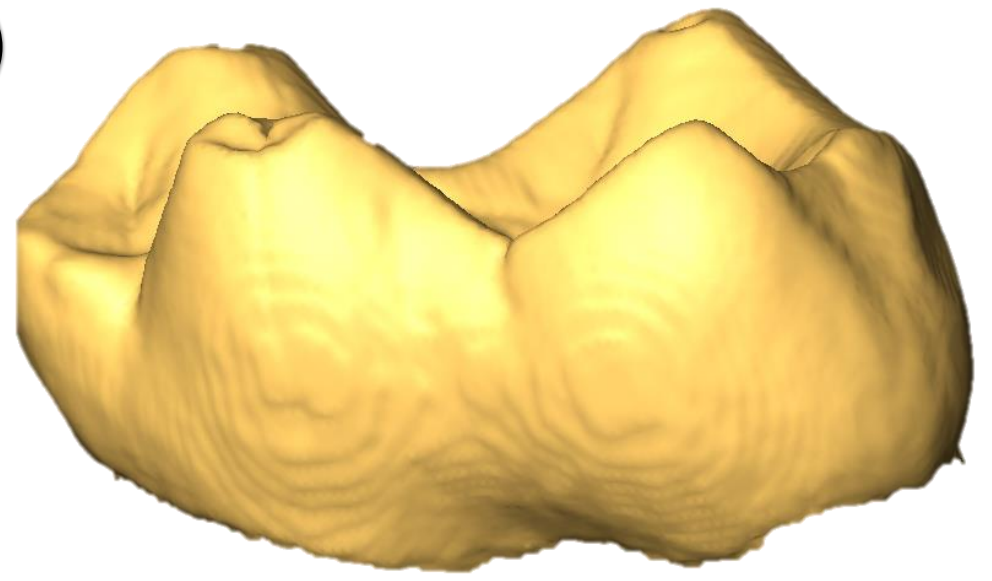
Callicebus molock – ZMB 261 LRM2

C)



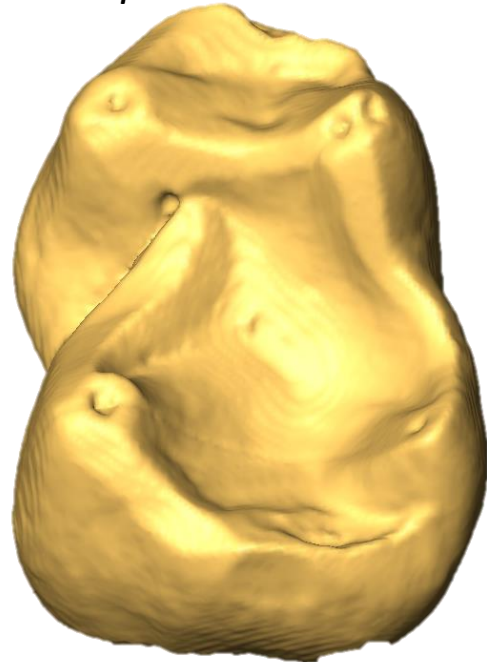
Ateles sp. – ZMB 7754 LLM1

D)



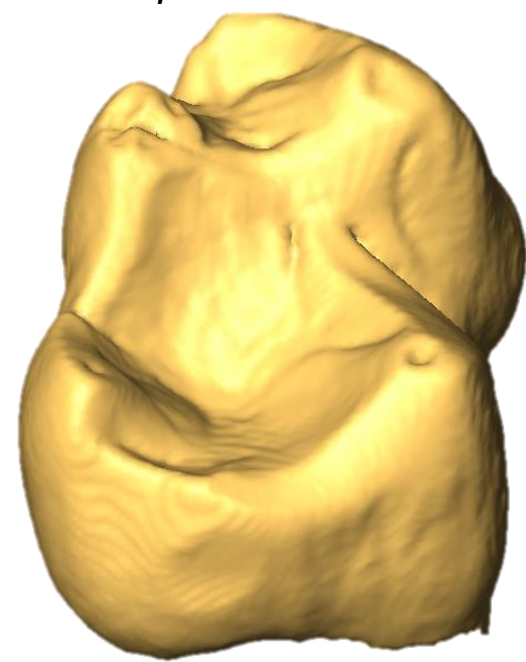
Alouatta sp. – ZMB 34287 LRM1

E)



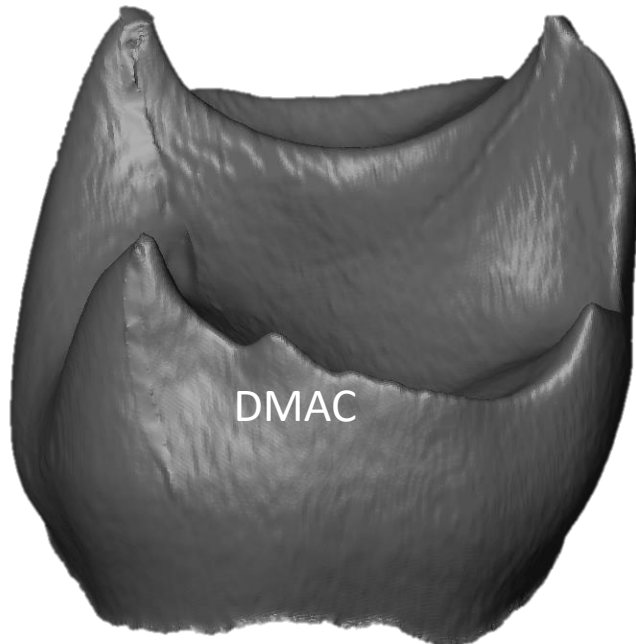
Alouatta sp. – ZMB 29420 LLM2

F)



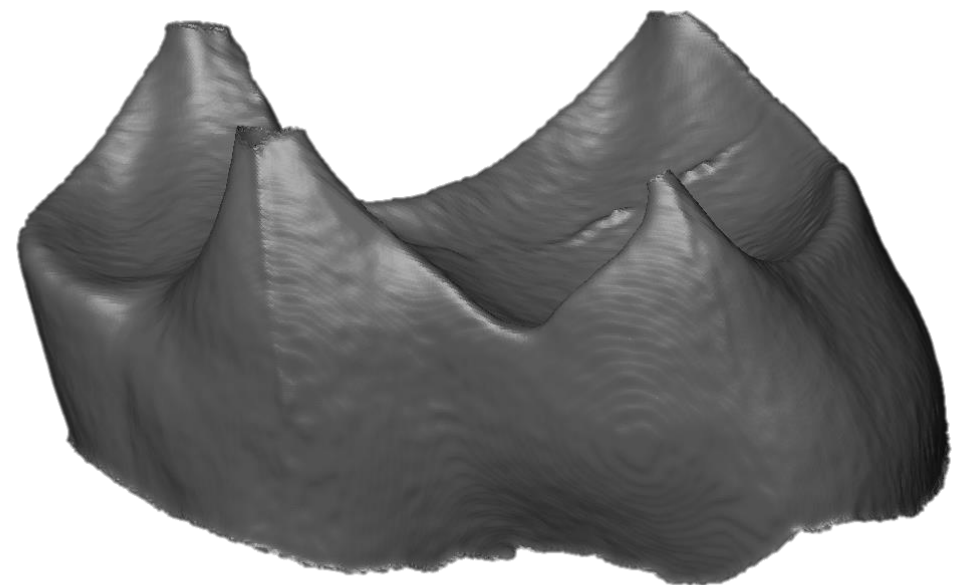
Alouatta sp. – ZMB 34287 LRM1

C)



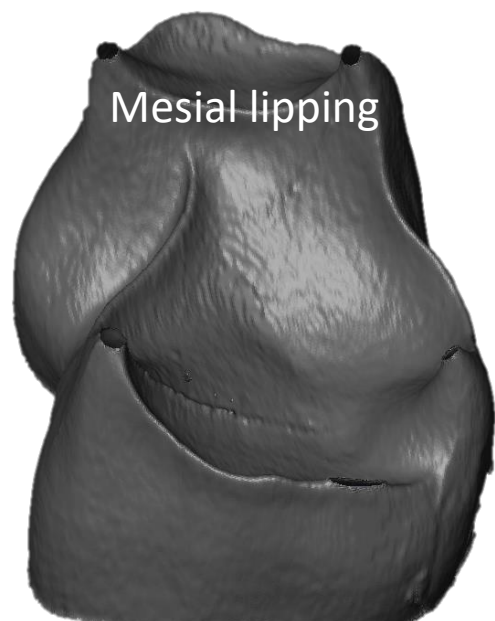
Ateles sp. – ZMB 7754 LLM1

D)



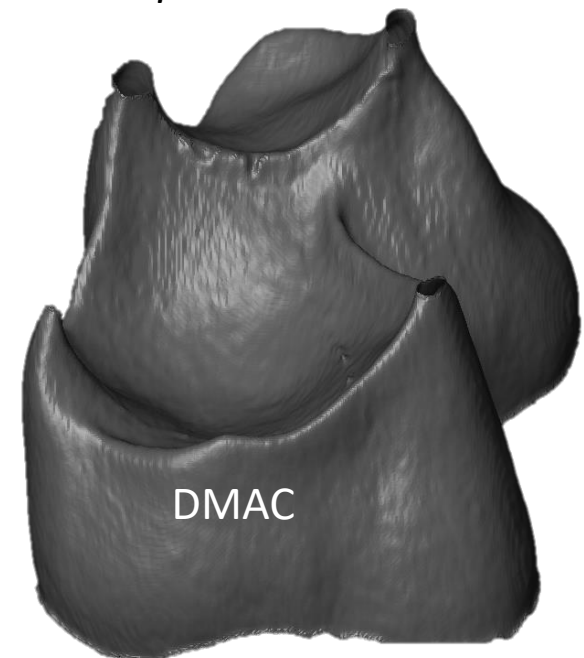
Alouatta sp. – ZMB 34287 LRM1

E)



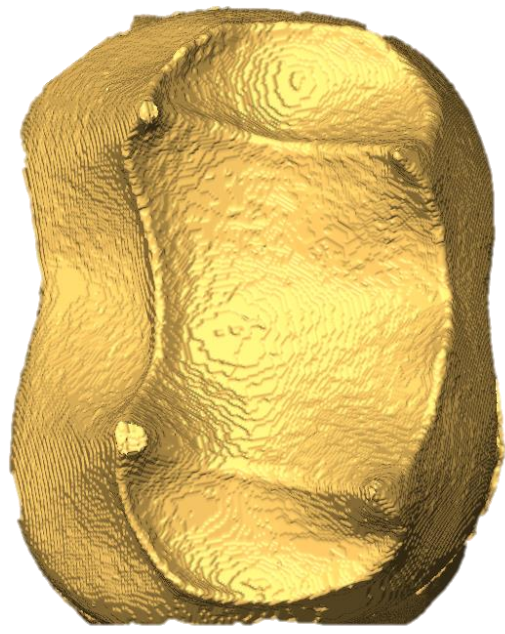
Alouatta sp. – ZMB 29420 LLM2

F)



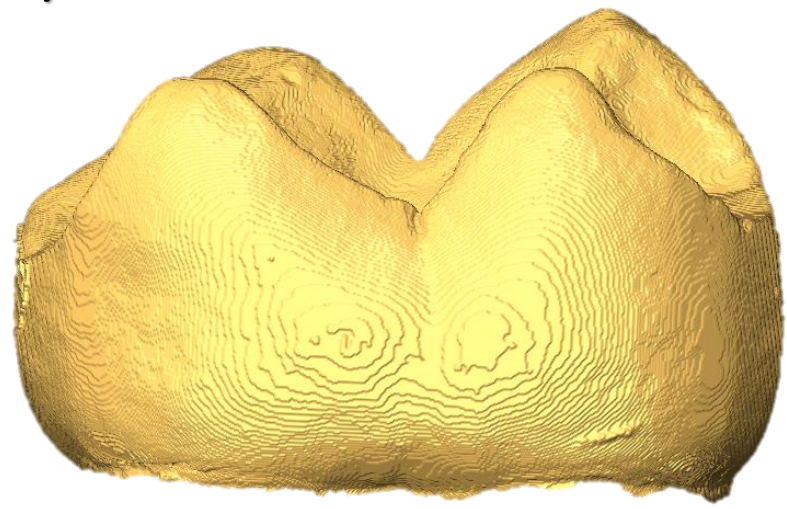
Alouatta sp. – ZMB 34287 LRM1

C)



Cercopithecus mitis – ZMB 87536 LLM2

D)



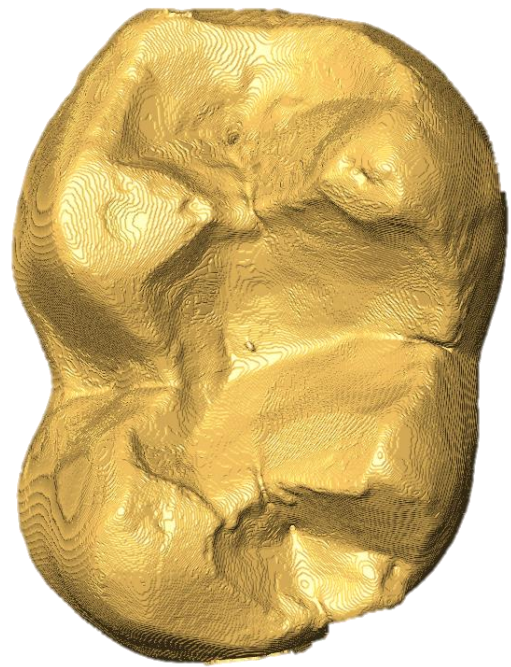
Chlorocebus aethiops - ZMB 87509 LRM2

E)



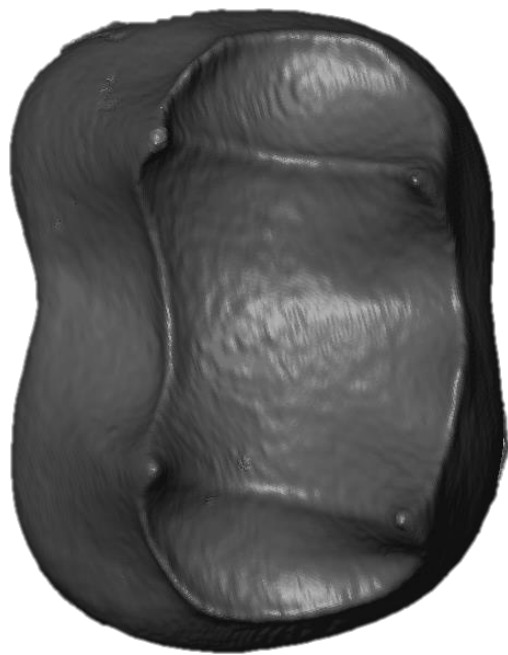
Miopithecus talapoin – ZMB 4943 LRM2

F)



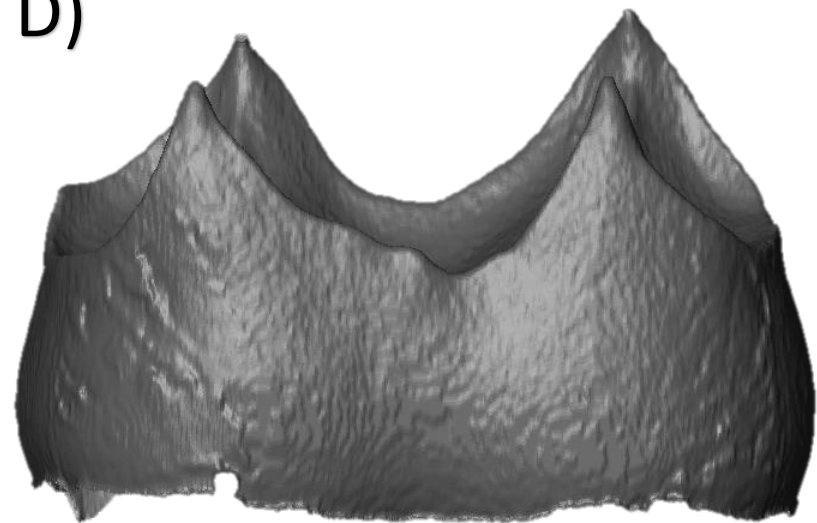
Erythrocebus patas – ZMB 11864 LLM2

C)



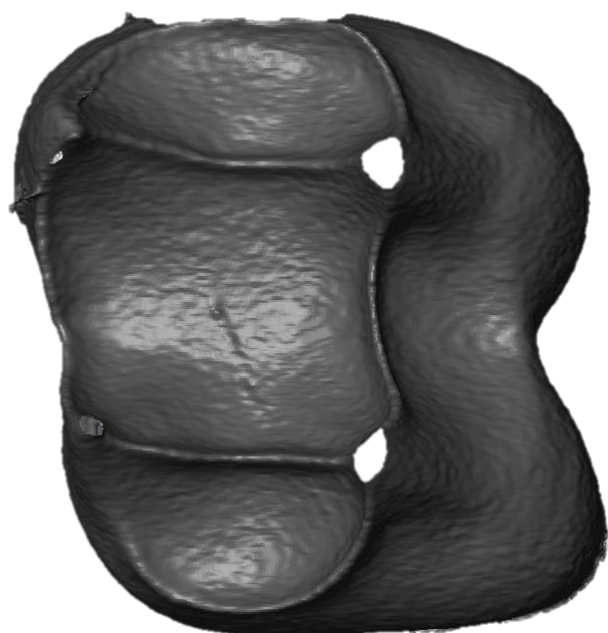
Cercopithecus mitis – ZMB 87536 LLM2

D)



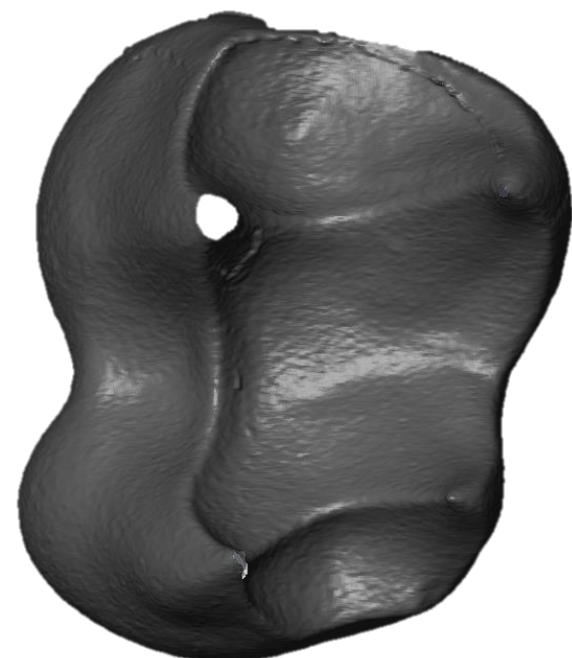
Chlorocebus aethiops - ZMB 87509 LRM2

E)

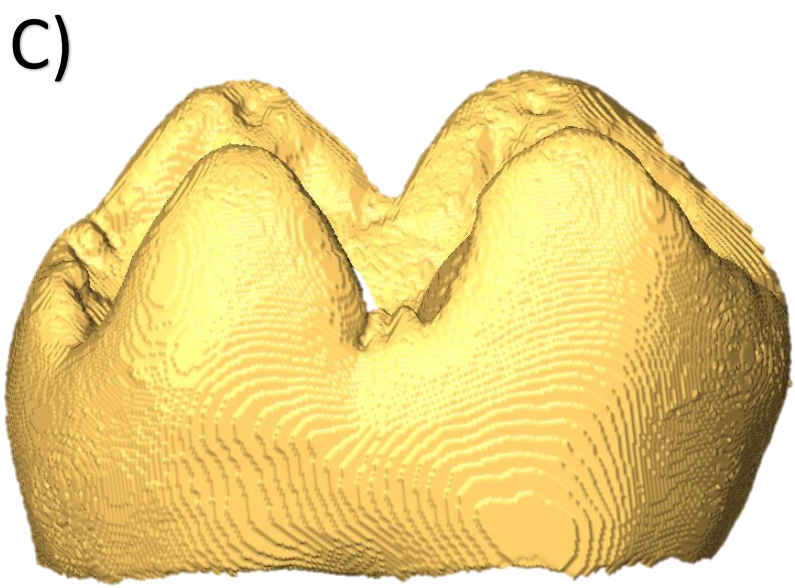


Miopithecus talapoin – ZMB 4943 LRM2

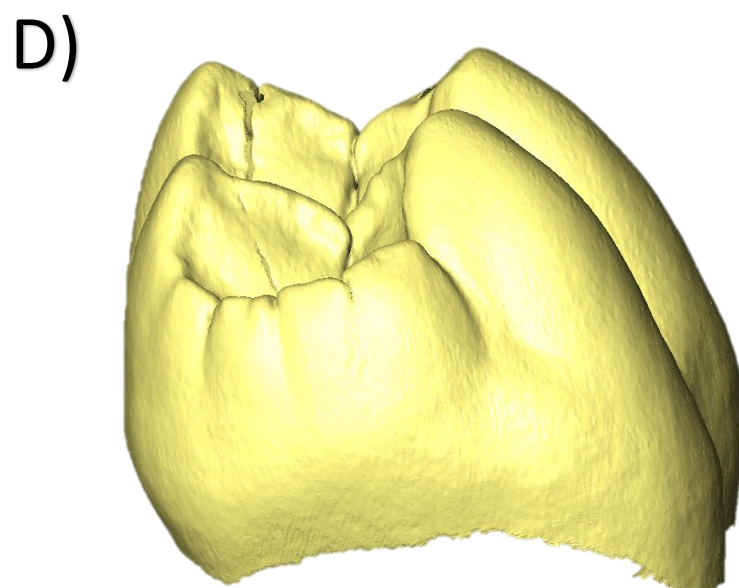
F)



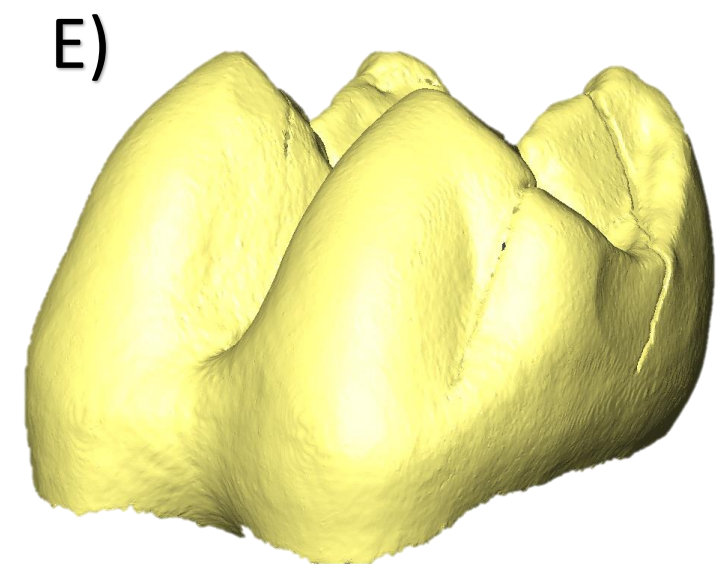
Erythrocebus patas – ZMB 11864 LLM2



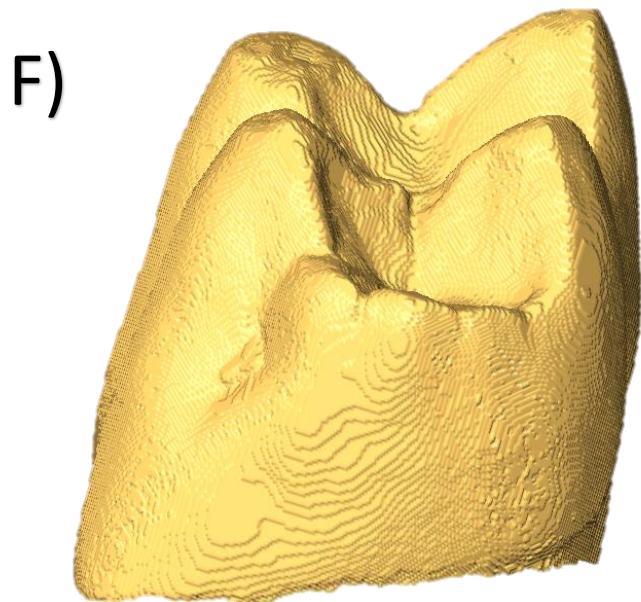
Macaca fascicularis – WFU 1763 LLM2



Papio anubis – ZMB 75019 LRM2



Papio Anubis – ZMB 75019 LRM2

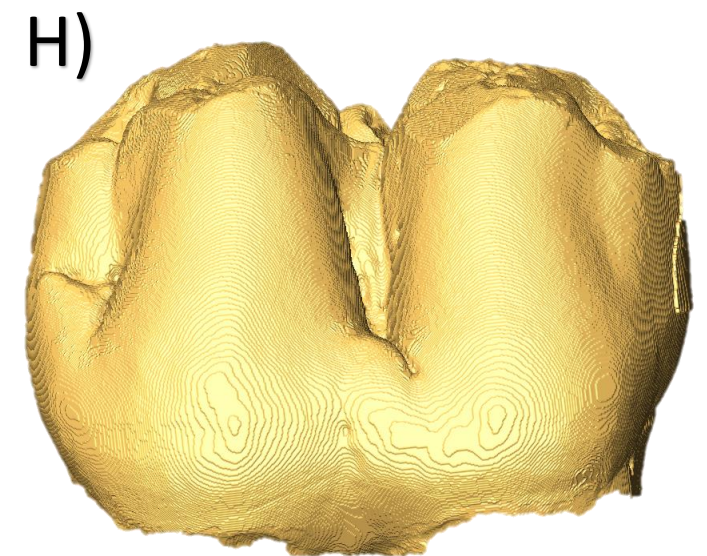


Macaca fascicularis – WFU 1278 LLM2

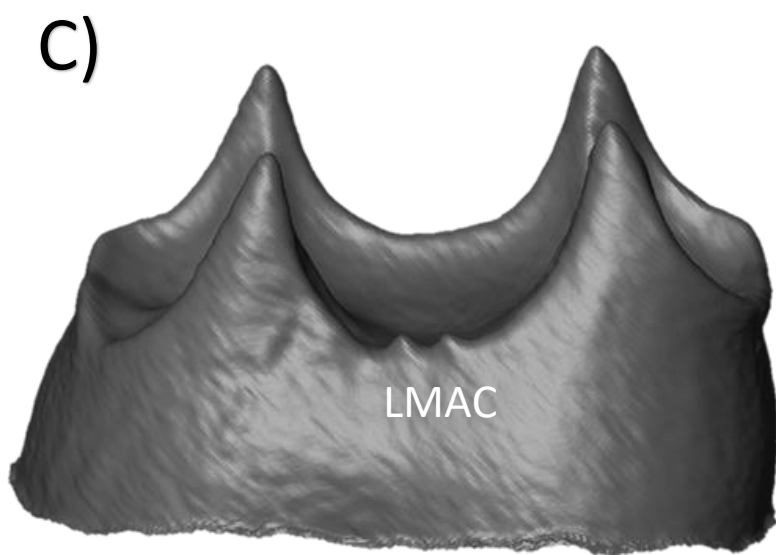
G)

No OES available

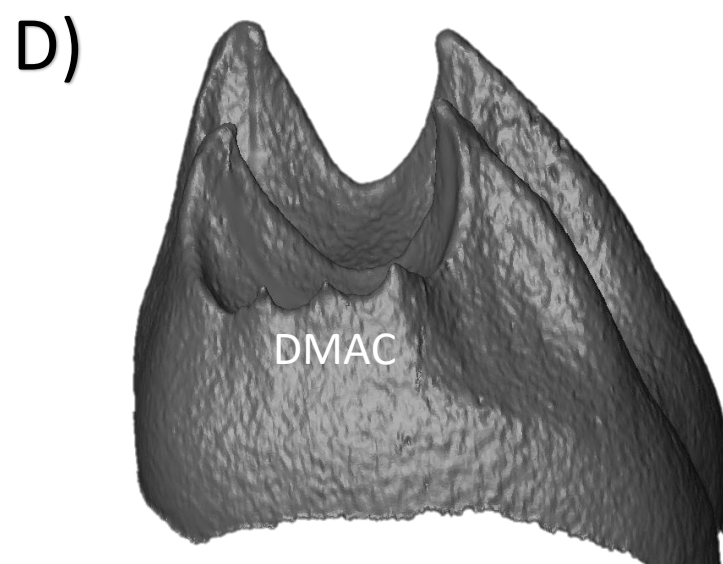
Macaca fascicularis – ZMB 7070 LLM2



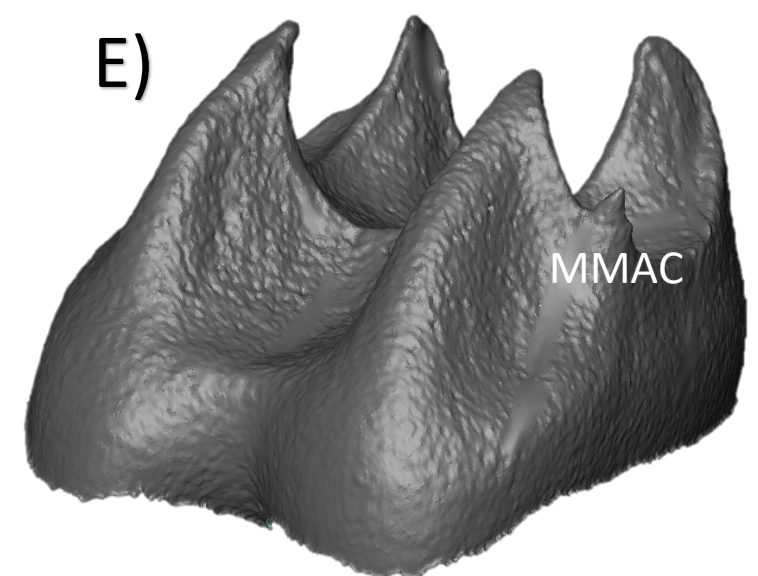
Mandrillus sphinx – ZMB 11183 LLM2



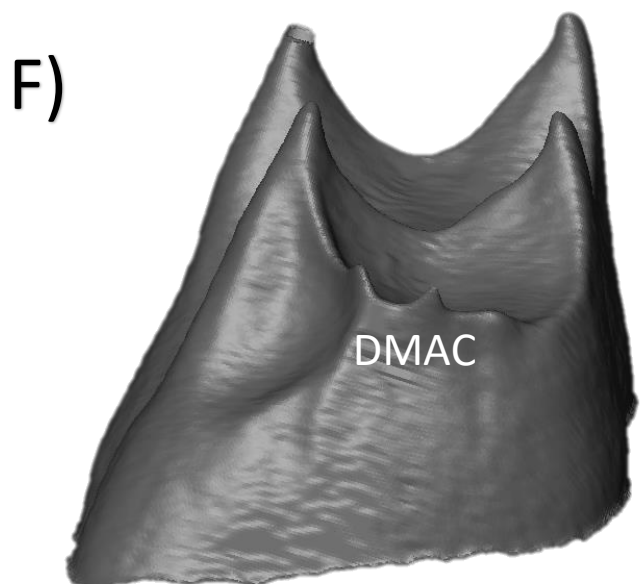
Macaca fascicularis – WFU 1763 LLM2



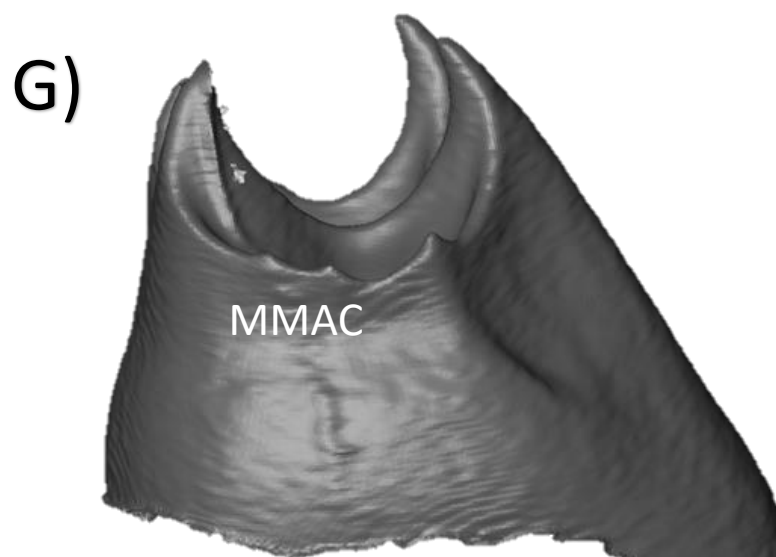
Papio anubis – ZMB 75019 LRM2



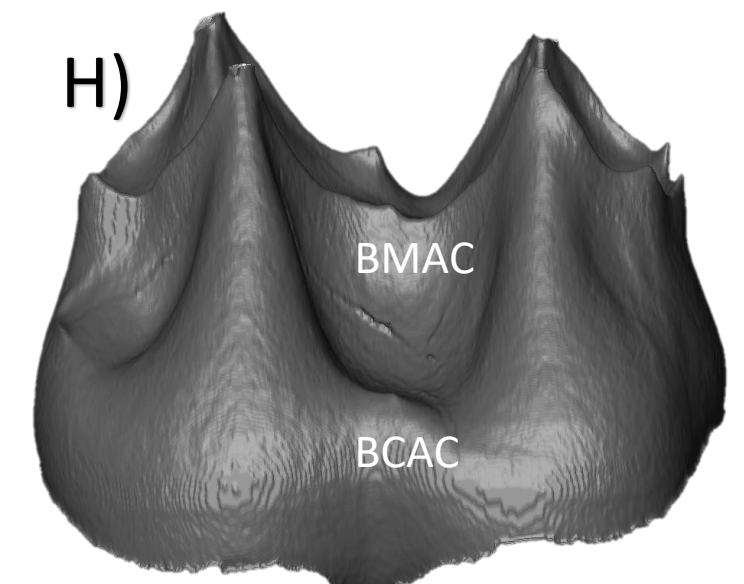
Papio Anubis – ZMB 75019 LRM2



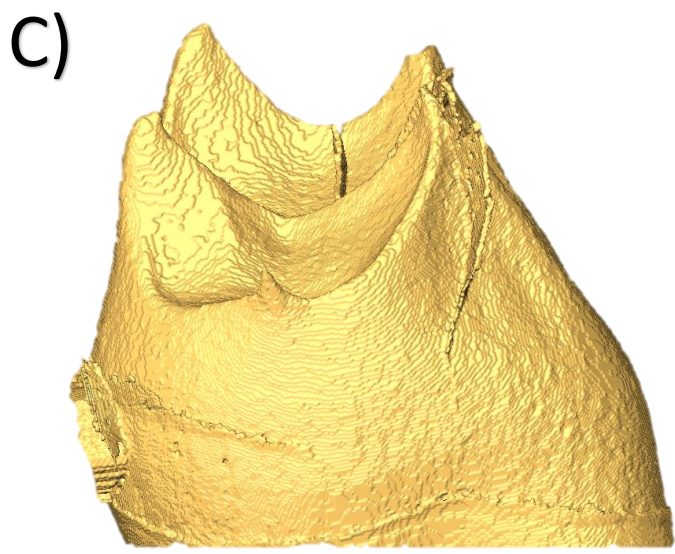
Macaca fascicularis – WFU 1278 LLM2



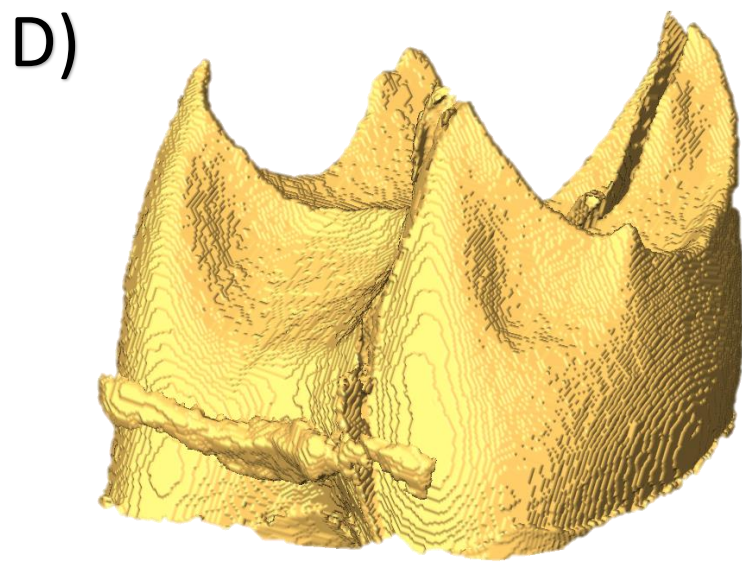
Macaca fascicularis – ZMB 7070 LLM2



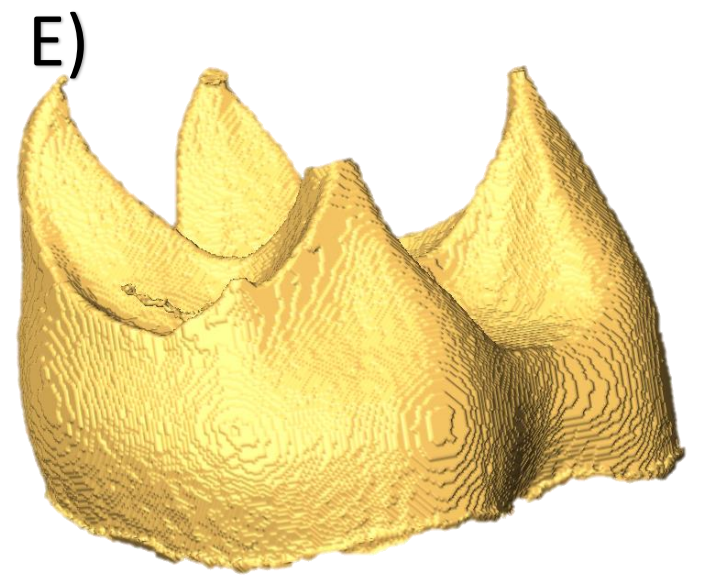
Mandrillus sphinx – ZMB 11183 LLM2



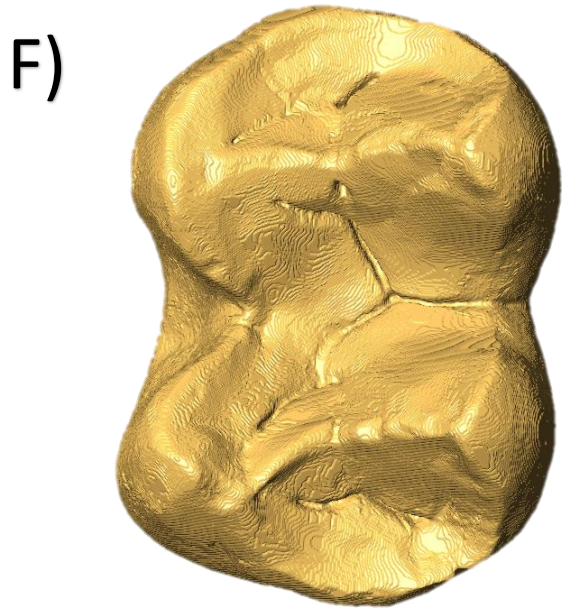
Colobus guereza – ZMB 45404 LRM2



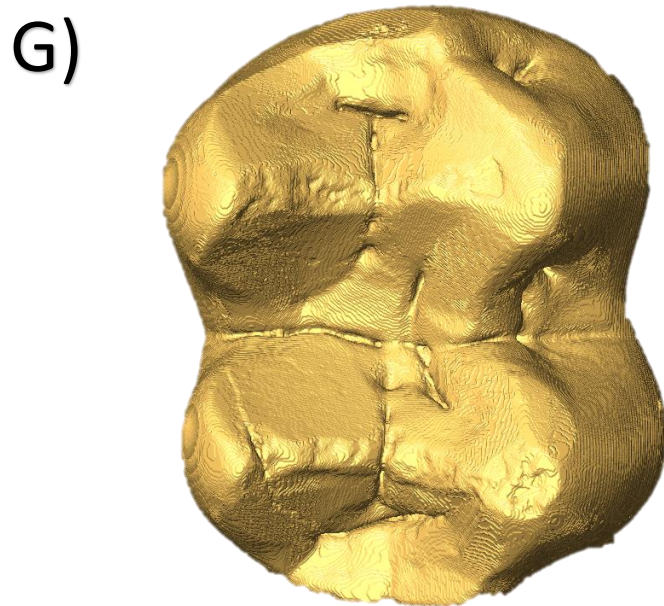
Presbytis melalophos – ZMB 73048 LRM2



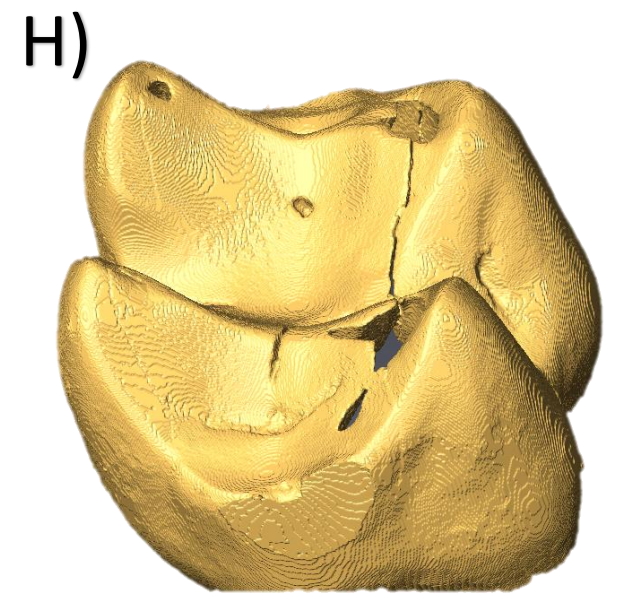
Presbytis melalophos – ZMB 73024 LLM2



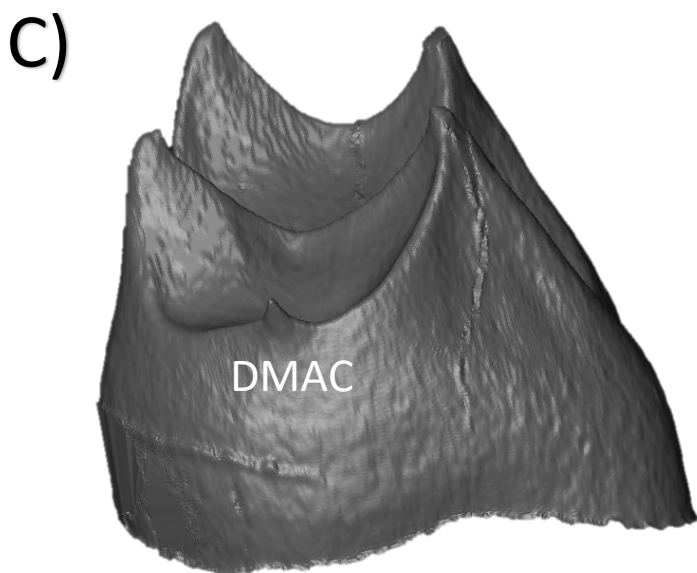
Nasalis larvatus – ZMB 72215 LLM2



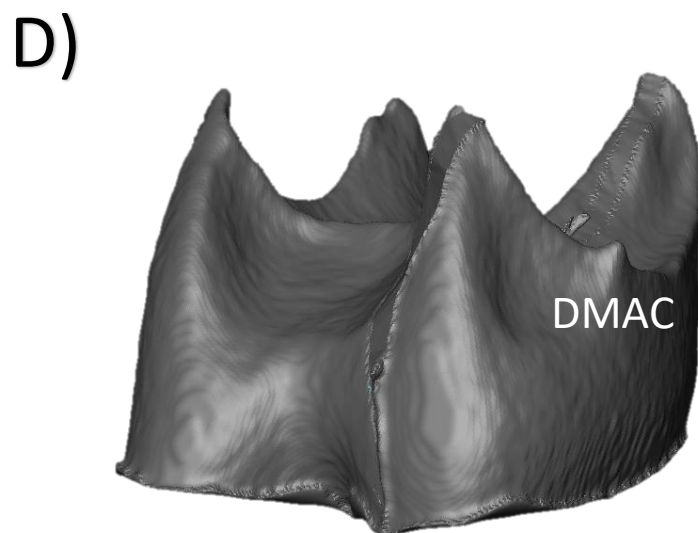
Trachypithecus cristatus – ZMB 43652 LRM2



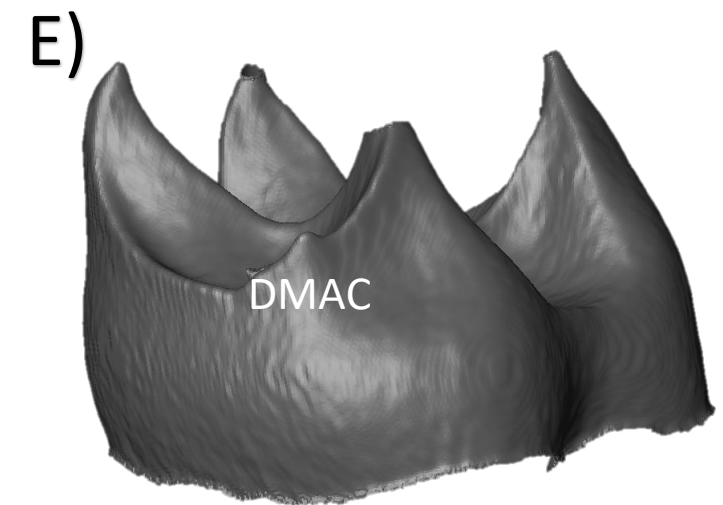
Trachypithecus cristatus – ZMB 42747 LRM2



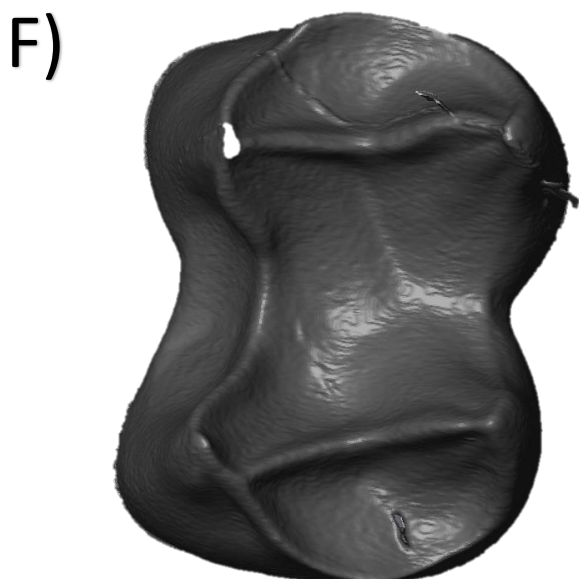
Colobus guereza – ZMB 45404 LRM2



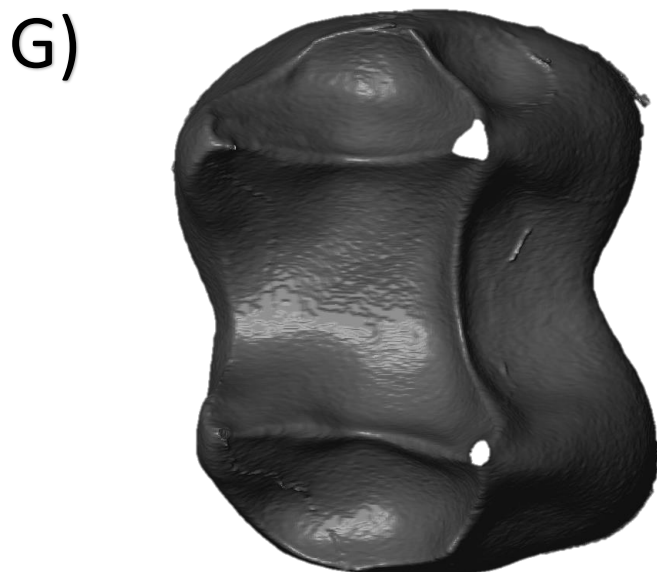
Presbytis melalophos – ZMB 73048 LRM2



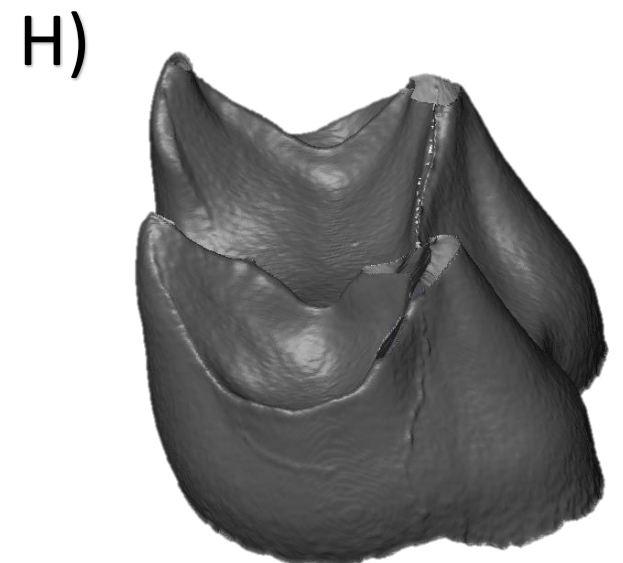
Presbytis melalophos – ZMB 73024 LLM2



Nasalis larvatus – ZMB 72215 LLM2

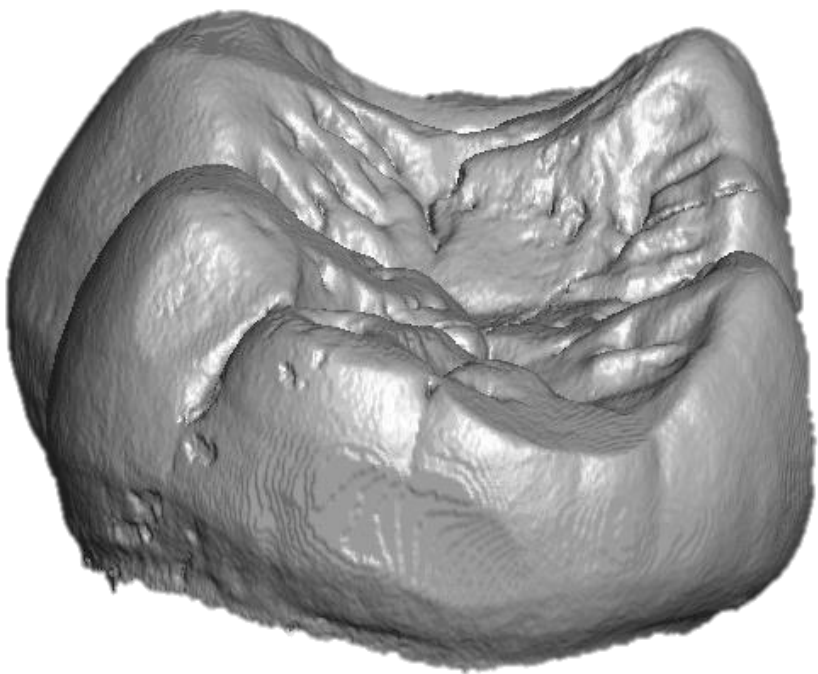


Trachypithecus cristatus – ZMB 43652 LRM2



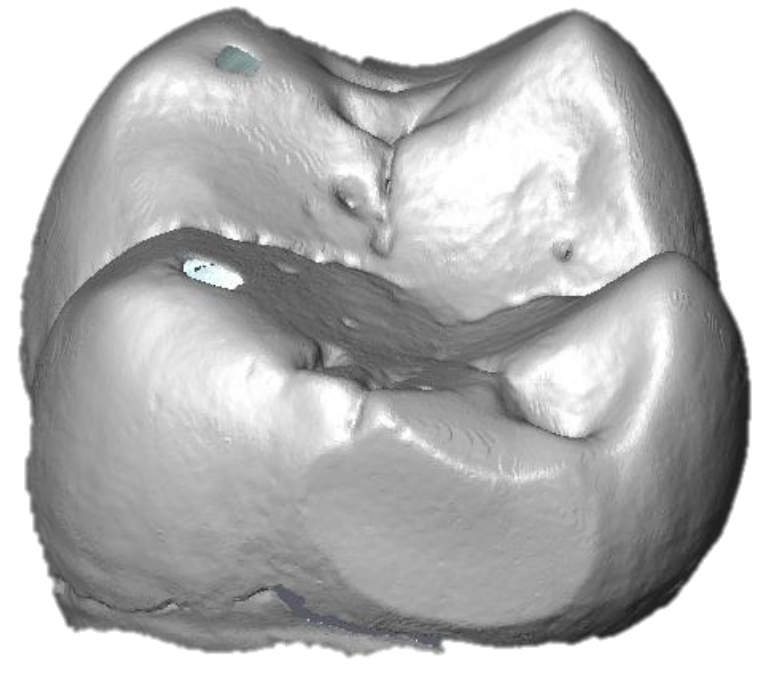
Trachypithecus cristatus – ZMB 42747 LRM2

C)



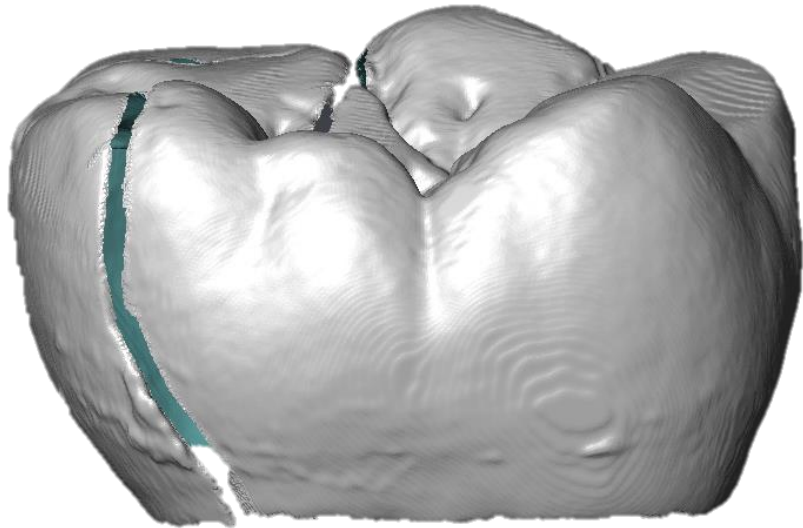
Pan troglodytes verus – MPI-EVA 11800 LLM2

D)



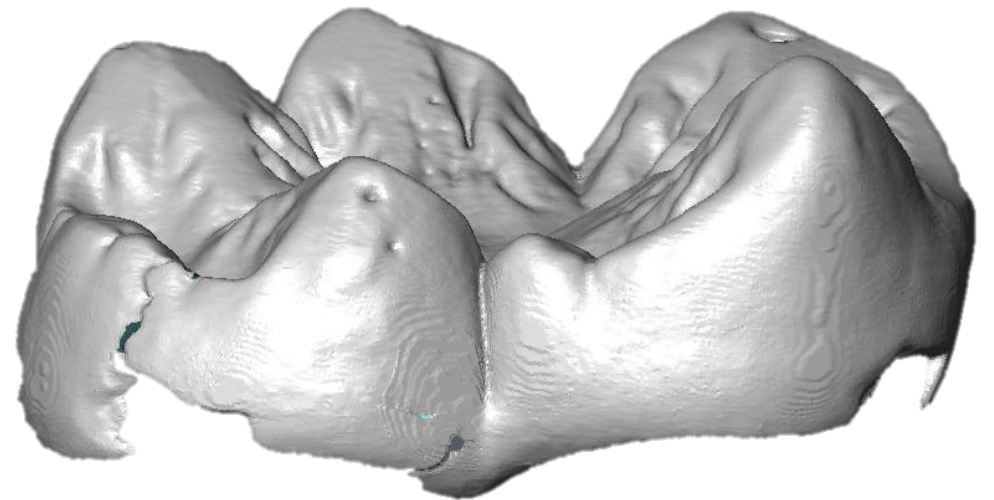
Pan troglodytes verus – MPI-EVA 15008 LLM1

E)



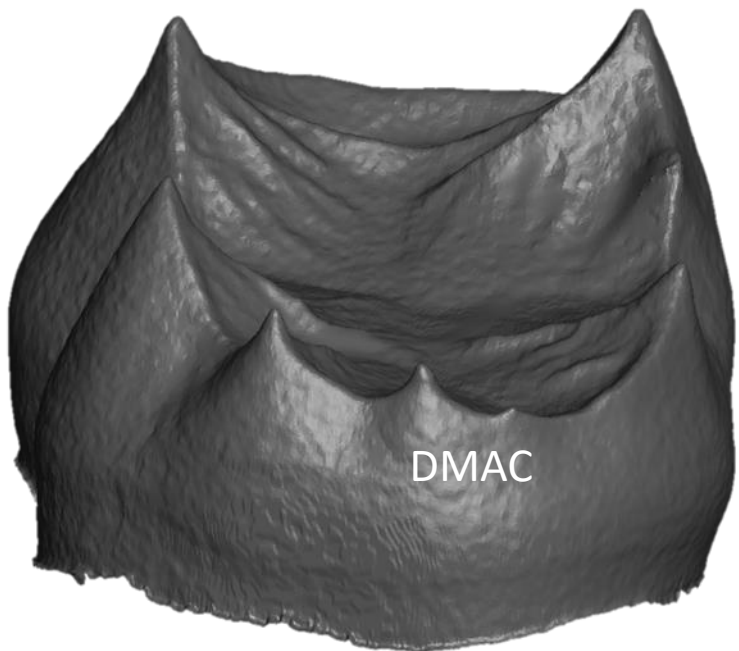
Homo sapiens – R433 LRM1

F)



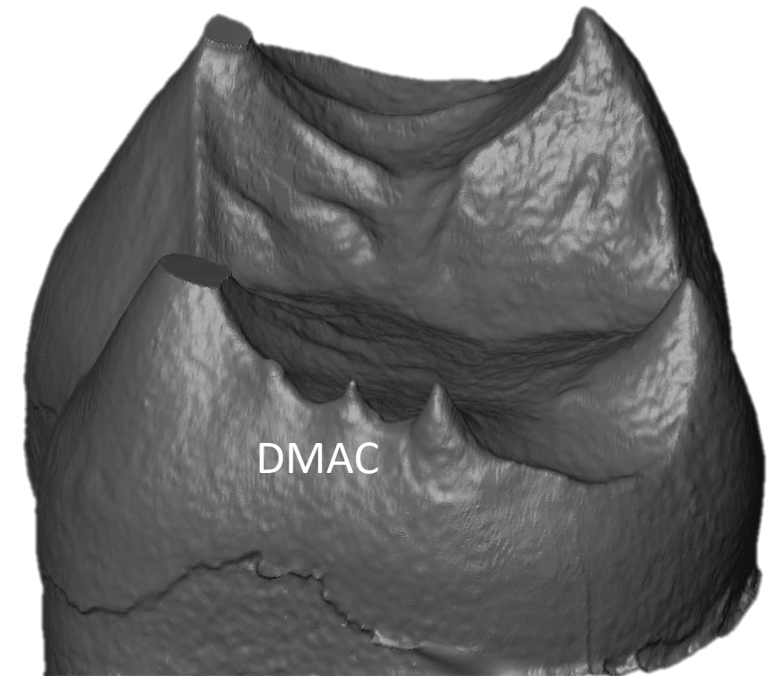
Gorilla gorilla – NMNH 545037 LRM2

C)



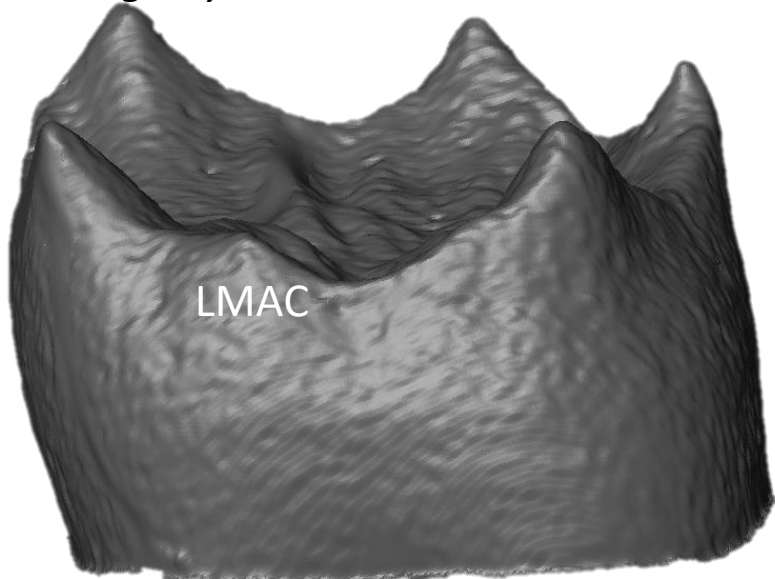
Pan troglodytes verus – MPI-EVA 11800 LLM2

D)



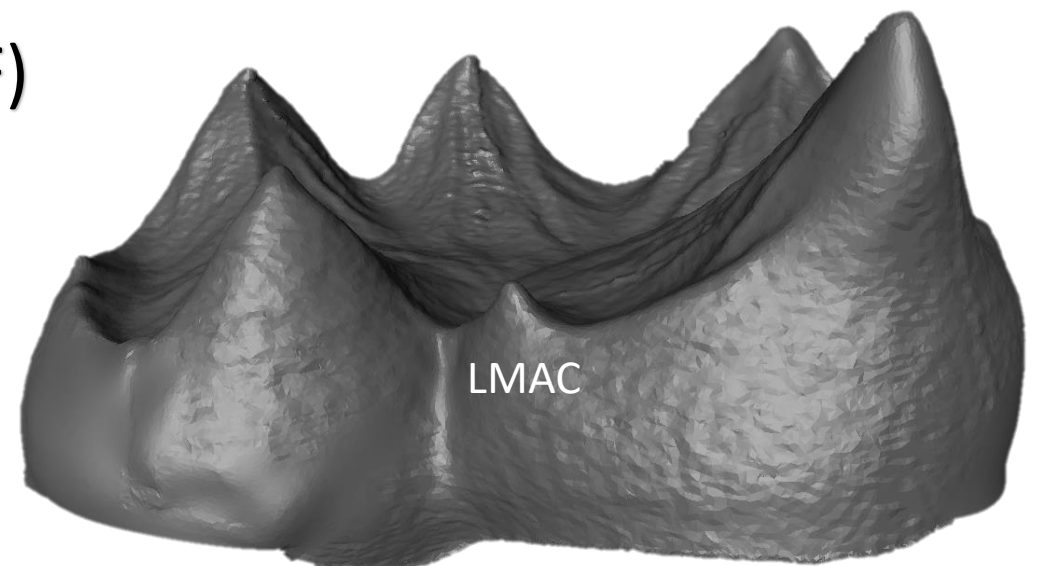
Pan troglodytes verus – MPI-EVA 15008 LLM1

E)



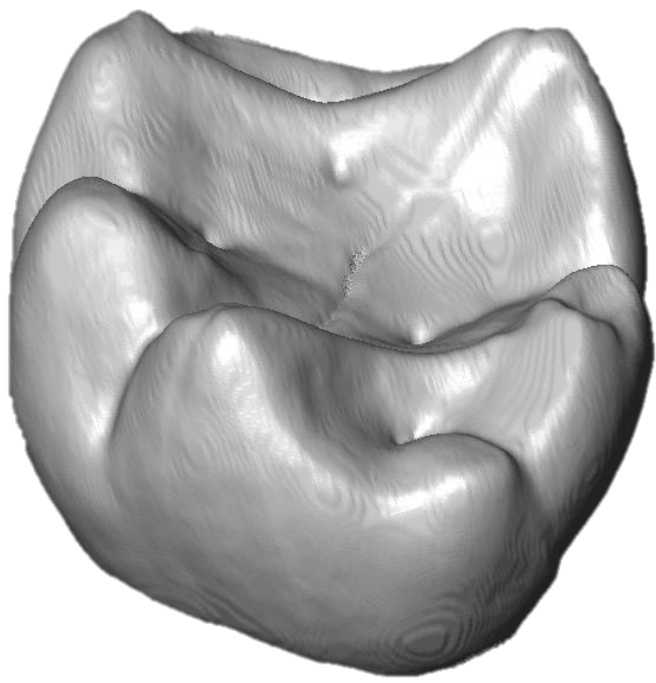
Homo sapiens – R433 LRM1

F)



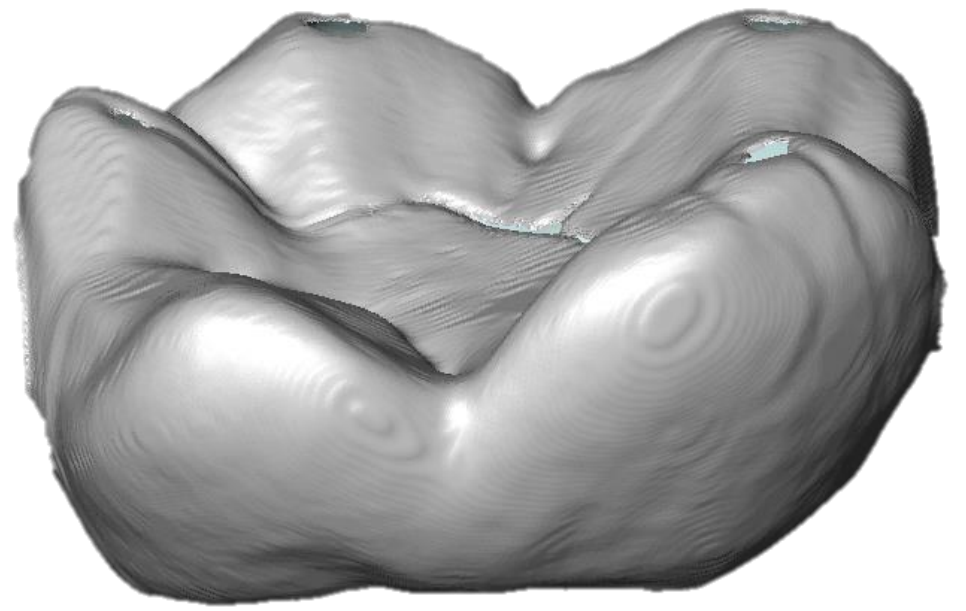
Gorilla gorilla – NMNH 545037 LRM2

C)



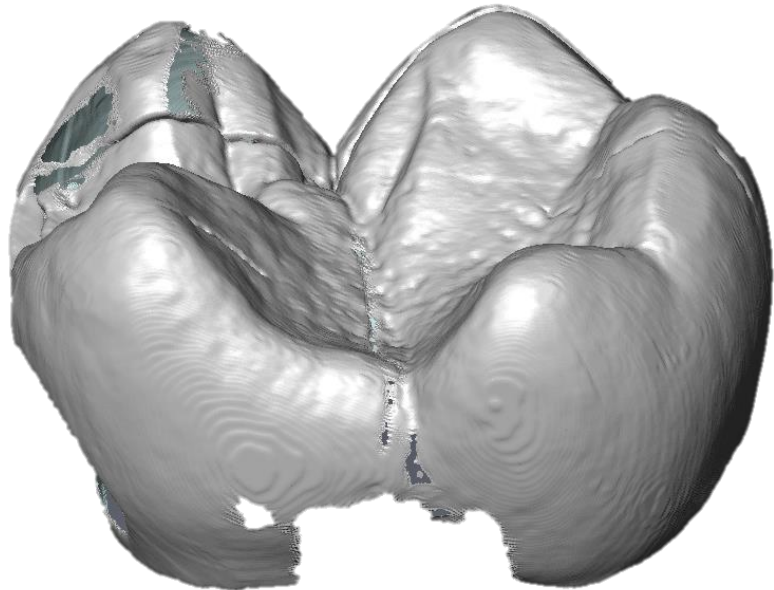
Hylobates muelleri– AMNH 103726 LLM2

D)



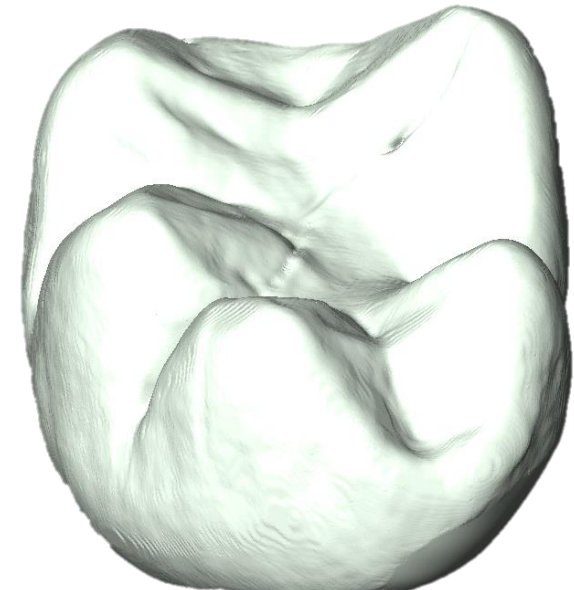
Hylobates muelleri– AMNH 103726 LLM1

E)



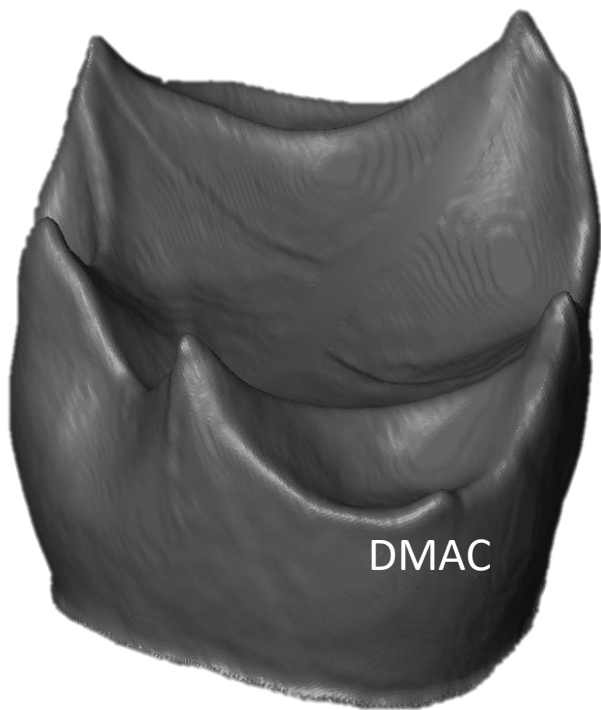
Symphalangus syndactylus– AMNH 100048 LRM1

F)



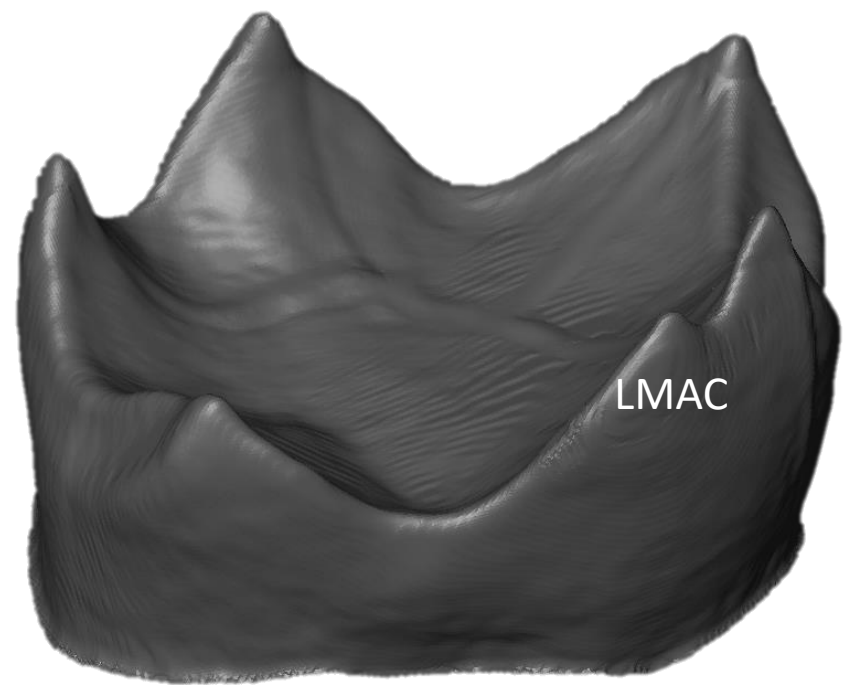
Symphalangus syndactylus– AMNH 102193 LLM2

C)



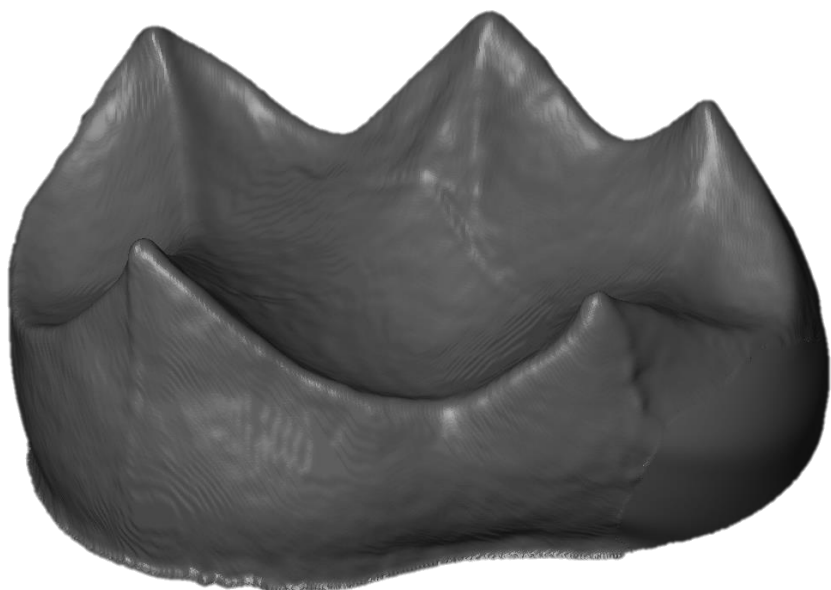
Hylobates muelleri– AMNH 103726 LLM2

D)



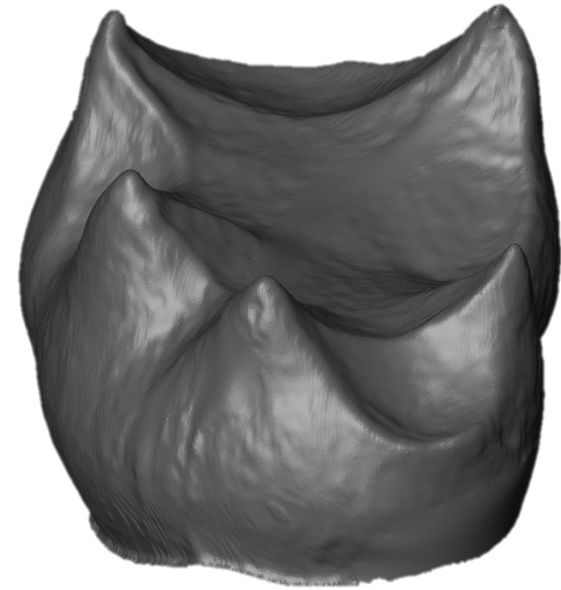
Hylobates muelleri– AMNH 103726 LLM1

E)



Symphalangus syndactylus– AMNH 100048 LRM1

F)



Symphalangus syndactylus– AMNH 102193 LLM2