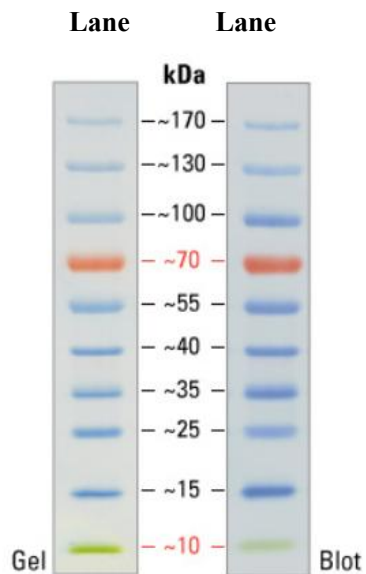
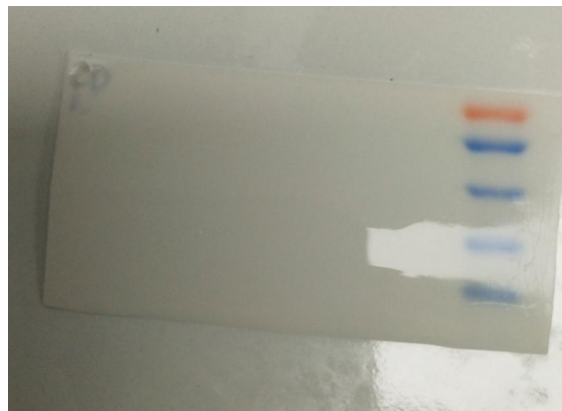


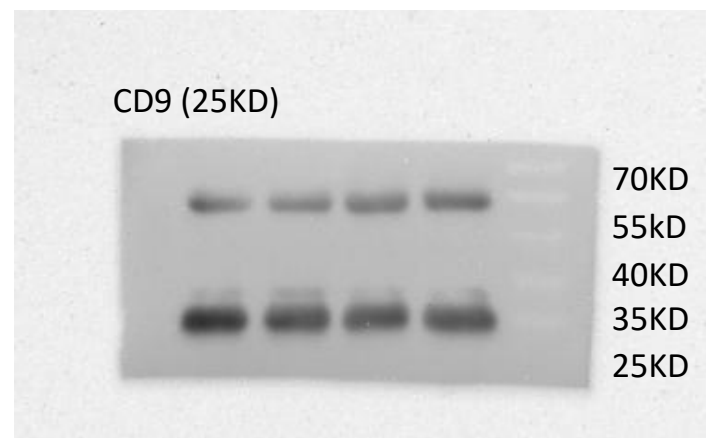
Picture 1



Picture 2

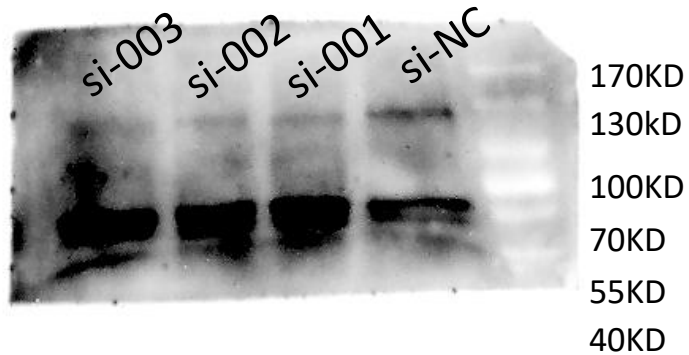


Picture 3

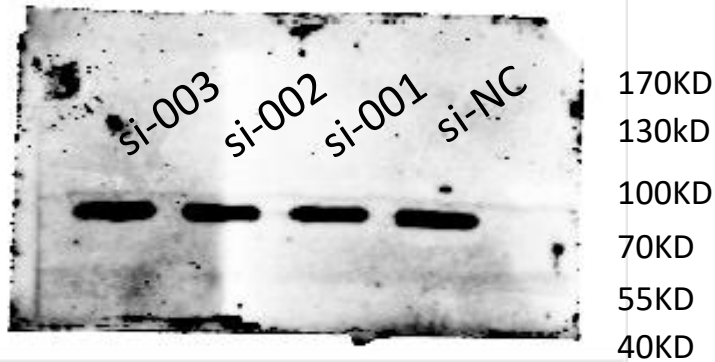


Lane 1 is the schematic diagram of the marker we selected (Thermo), and we found that the marker at the 70kD position is red. Picture 2 is a PVDF membrane incubated with CD9, picture 3 is the picture of the western blot. The top red brand in picture 2 is 70kD, and we found the molecular weight of CD9 is 25kD.

CBL (120KD)

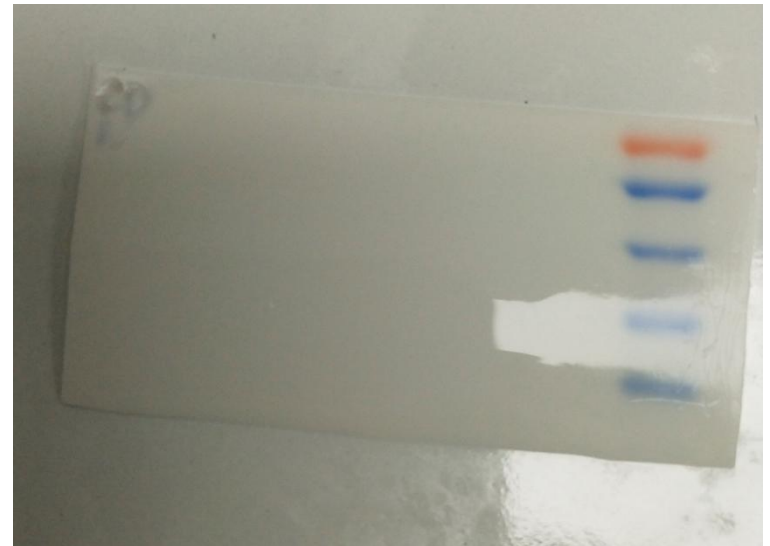
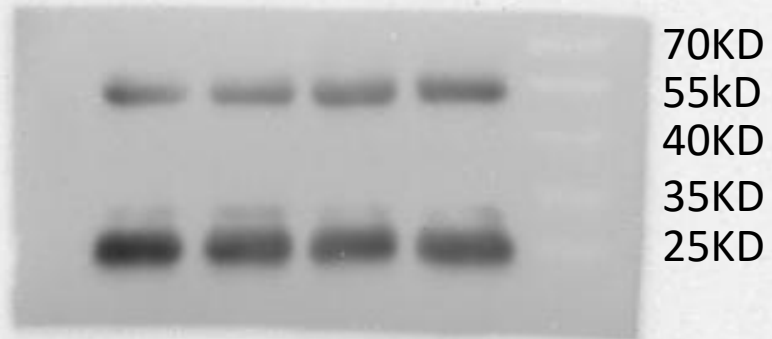


β -tublin (55KD)

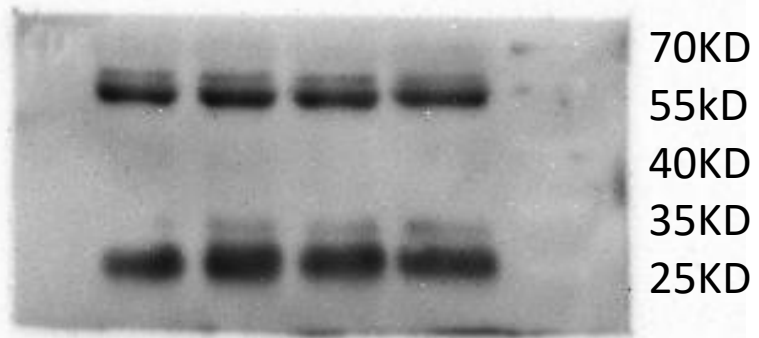


Exosome marker protein

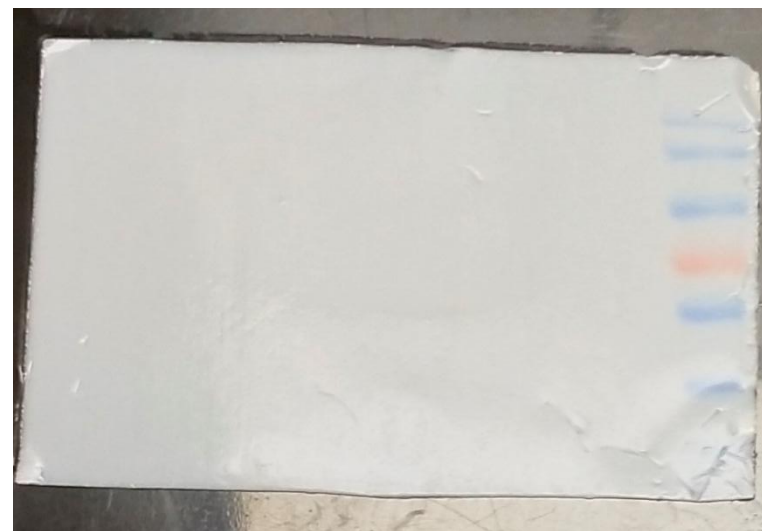
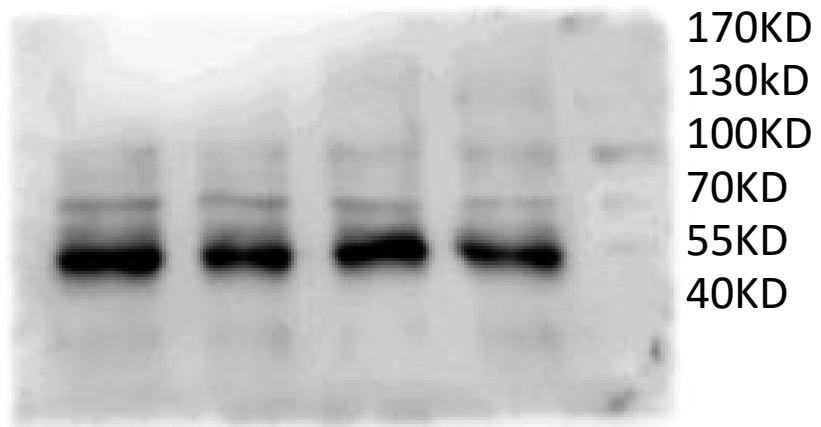
CD9 (25KD)



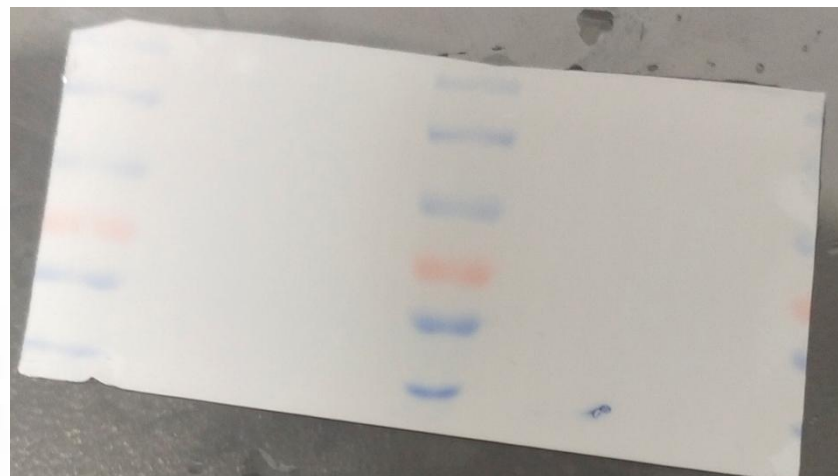
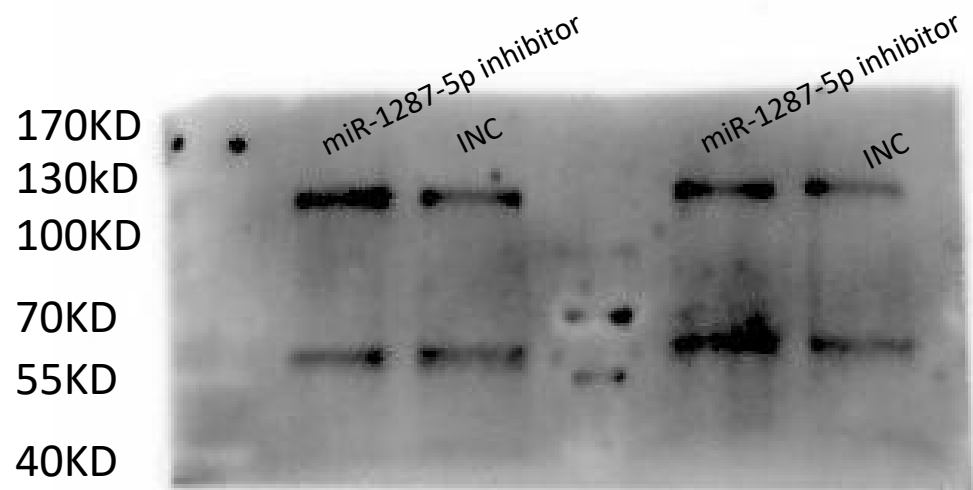
CD63 (26KD)



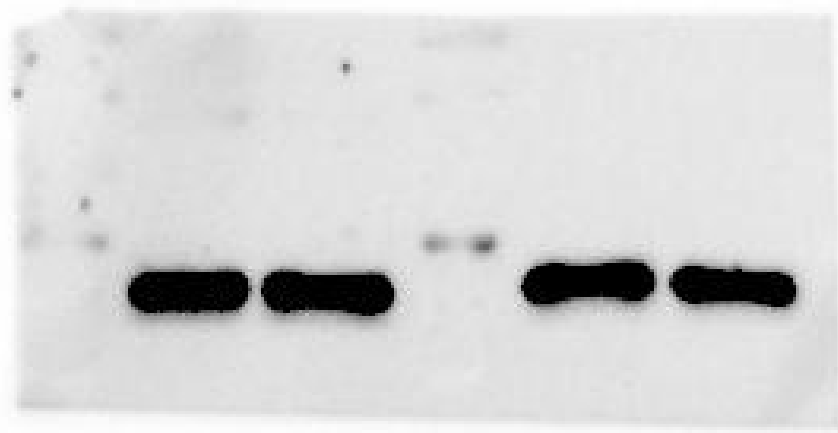
TSG101 (44KD)



CBL (120KD)



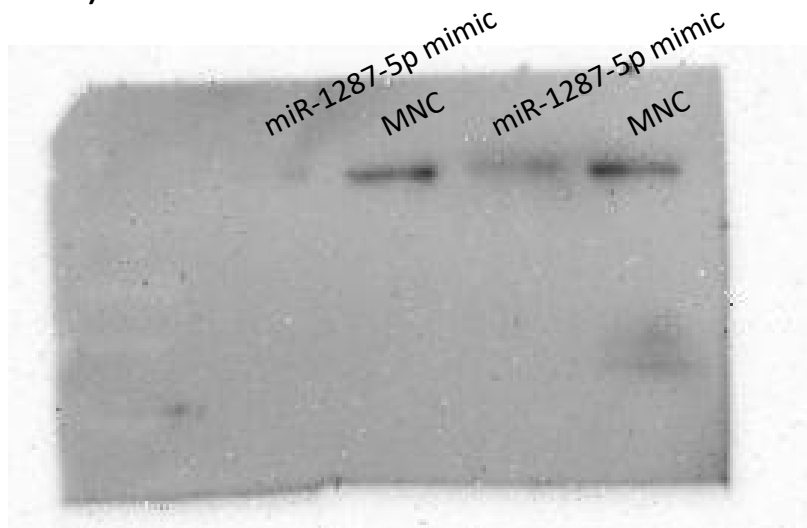
β -tubulin (55KD)



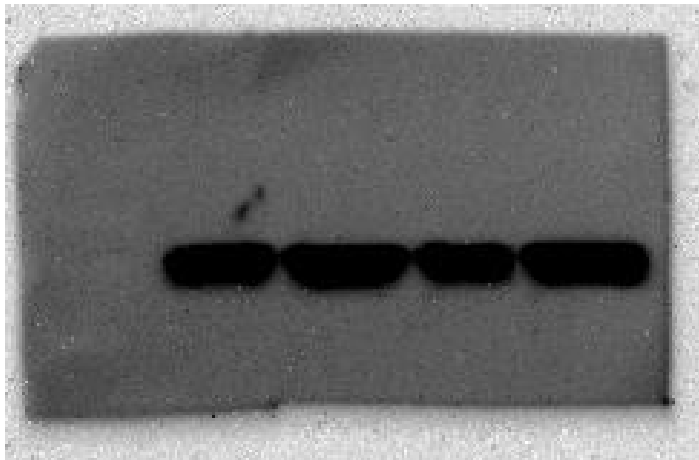
CBL (120KD)

170KD
130kD
100KD

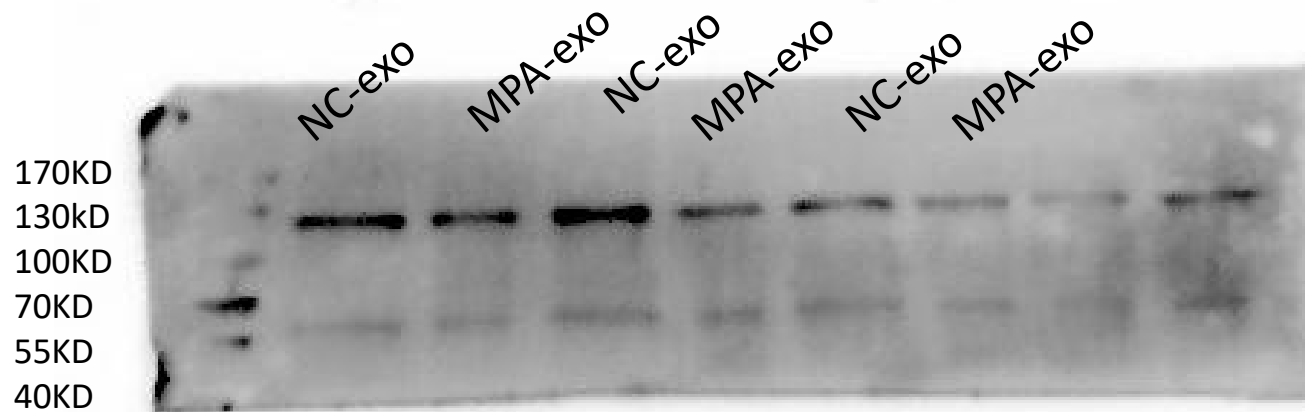
70KD
55KD
40KD



β -tublin (55KD)



CBL (120KD)



β -tublin (55KD)

