



Imagery ©2022 CNES / Airbus, Landsat / Copernicus, Maxar Technologies, Map data ©2022 1 km

Fig. S1. Satellite image showing the fossil site that yielded the sauropod material described in this paper (CGS V001) in Chaya County, Qamdu District, East Tibet. Map data © 2022 Google, Maxar Technologies.

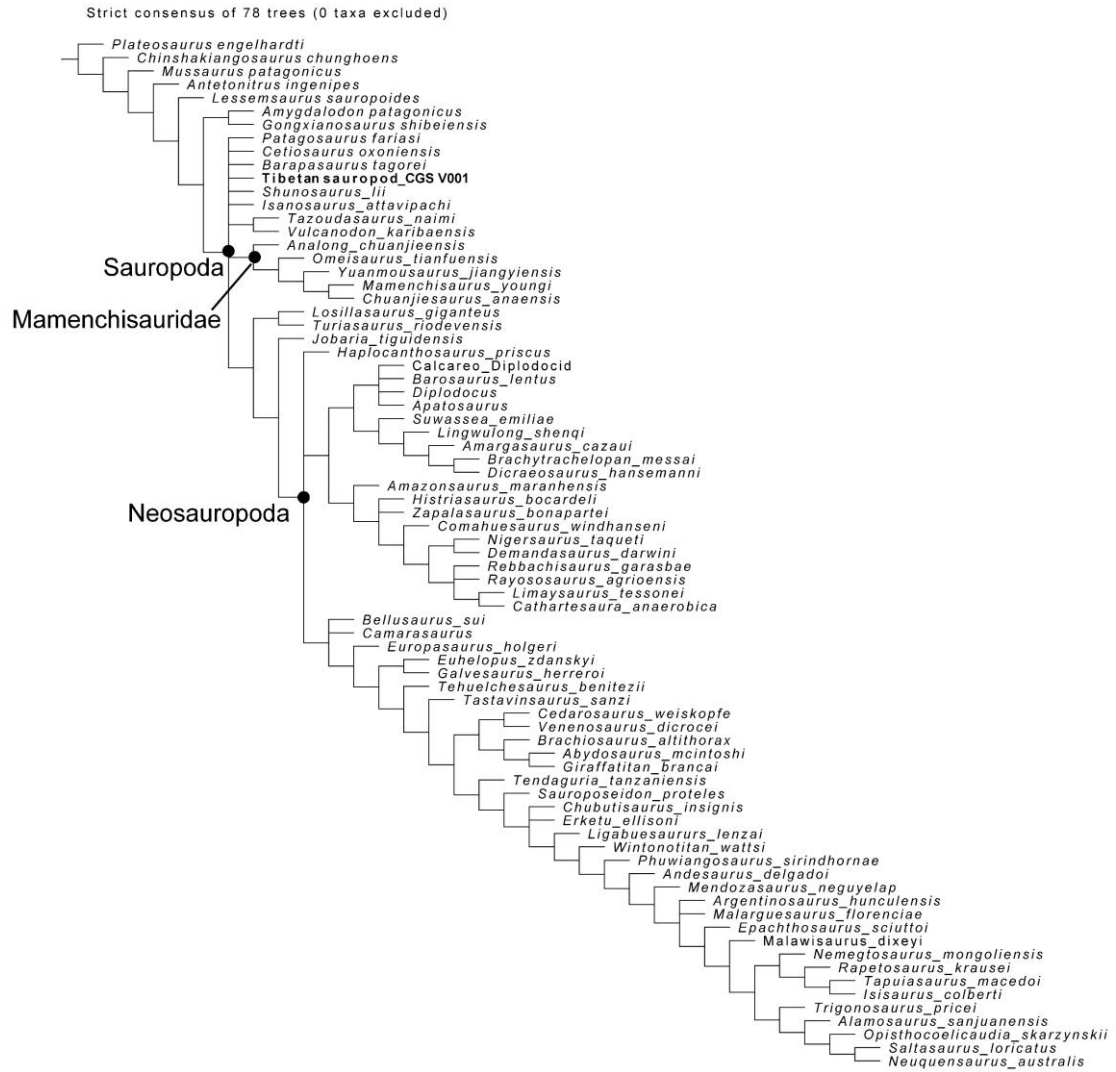


Fig. S2. Strict consensus tree from 78 MPTs (TL=1223) based on 77 taxa and 386 characters. Data matrix modified from Ren et al. (2021).