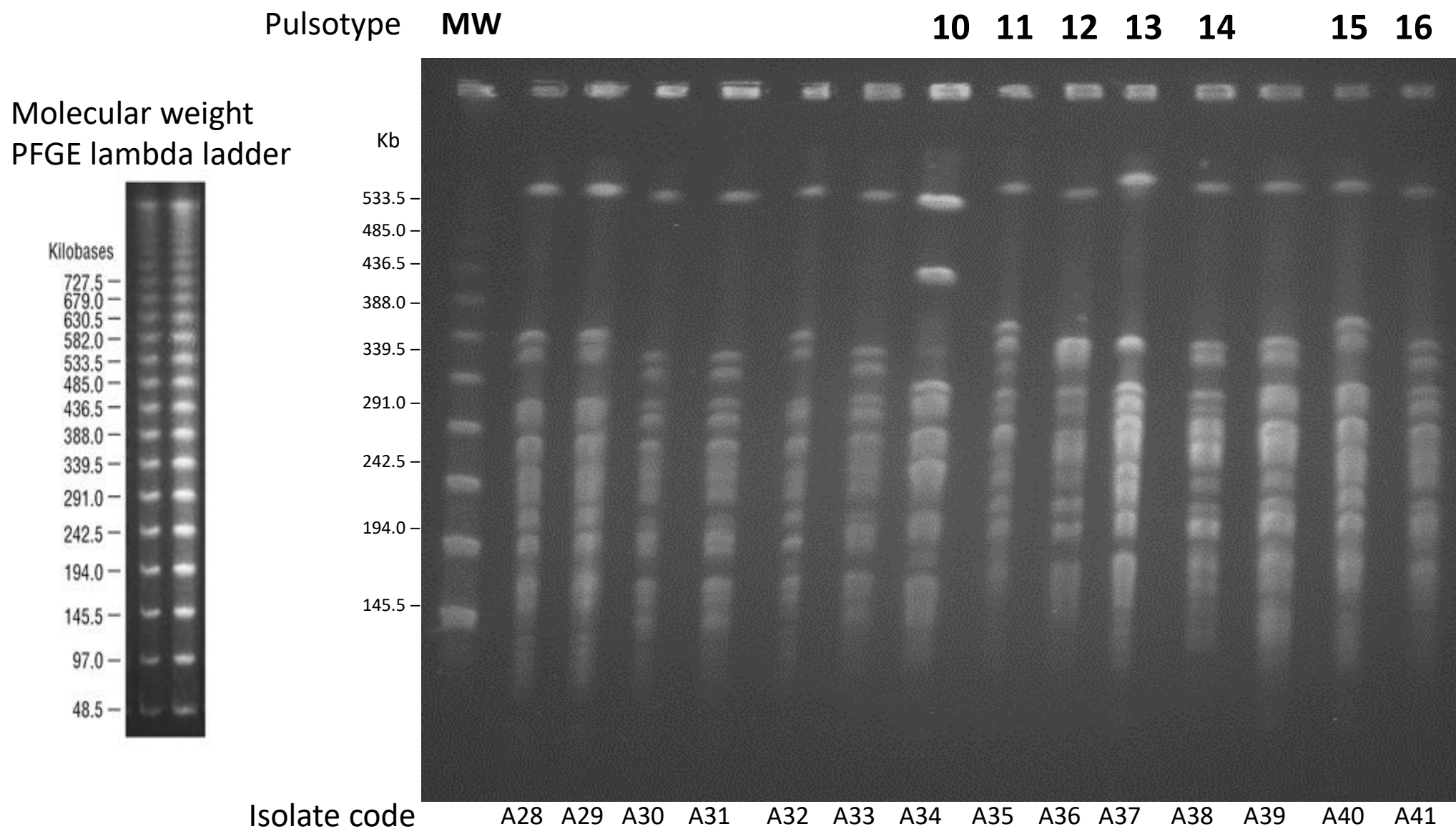
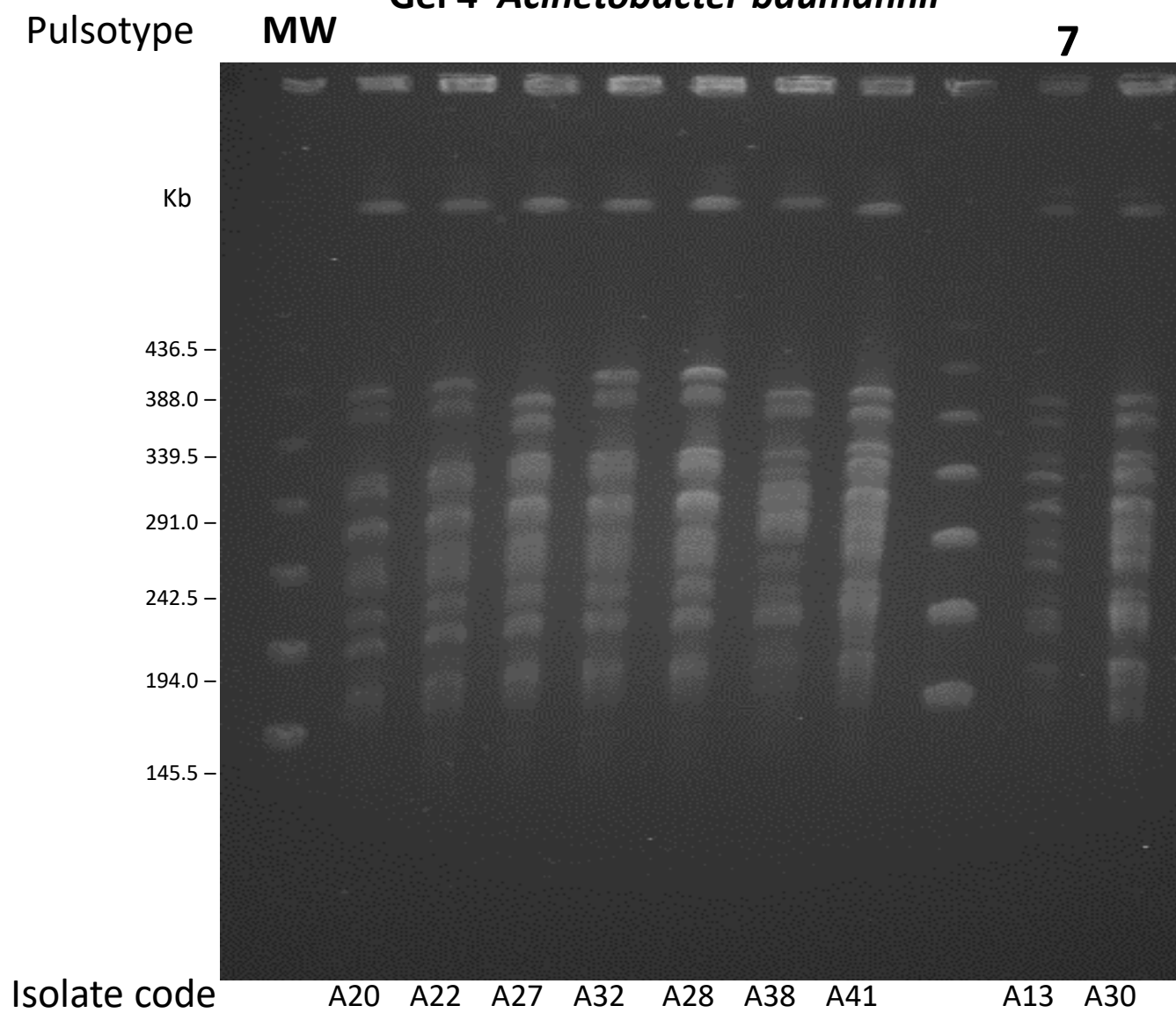


Uncropped Gels
Acinetobacter baumannii

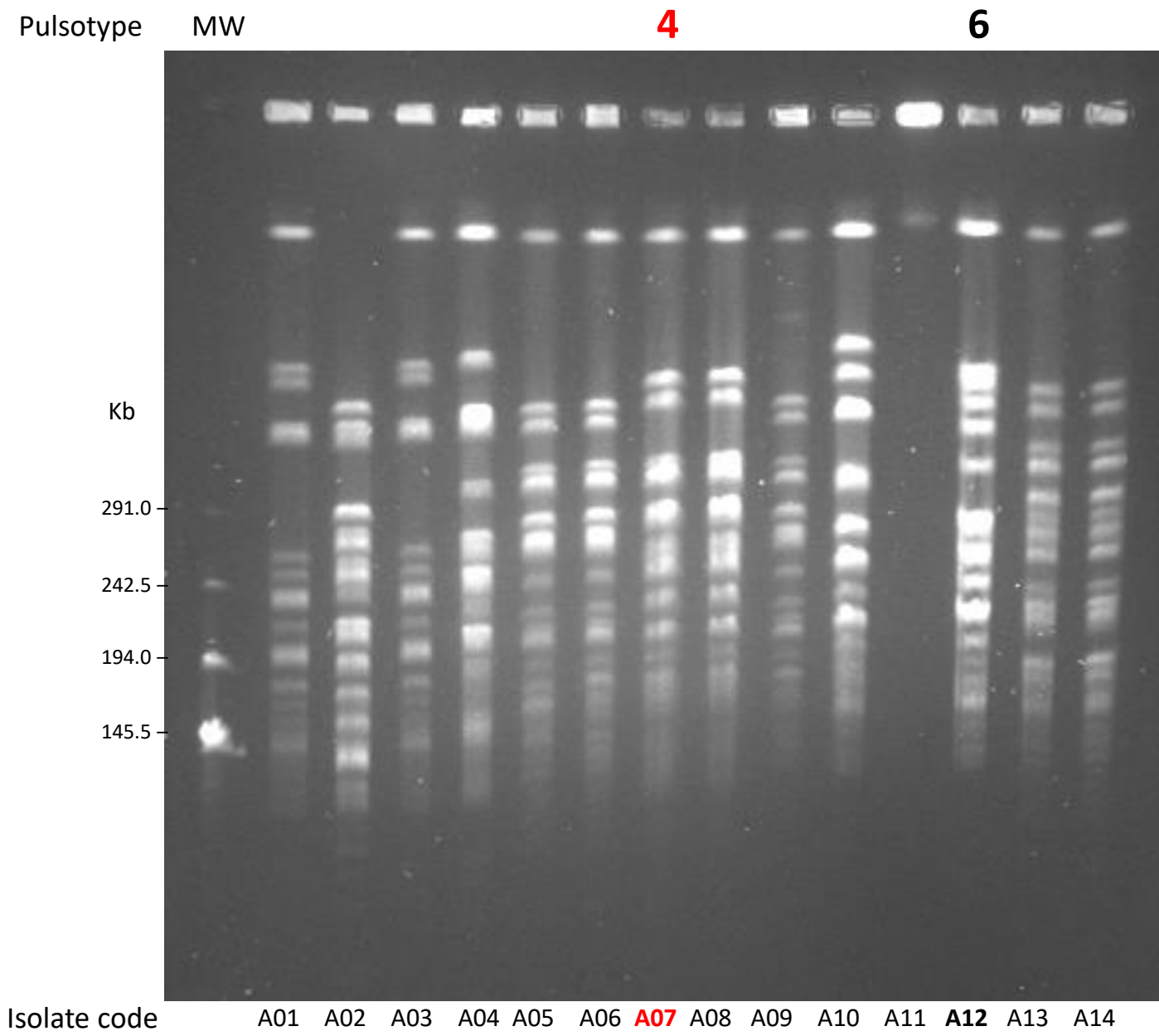
Gel 3 *Acinetobacter baumannii*



Gel 4 *Acinetobacter baumannii*



Gel 5 *Acinetobacter baumannii*

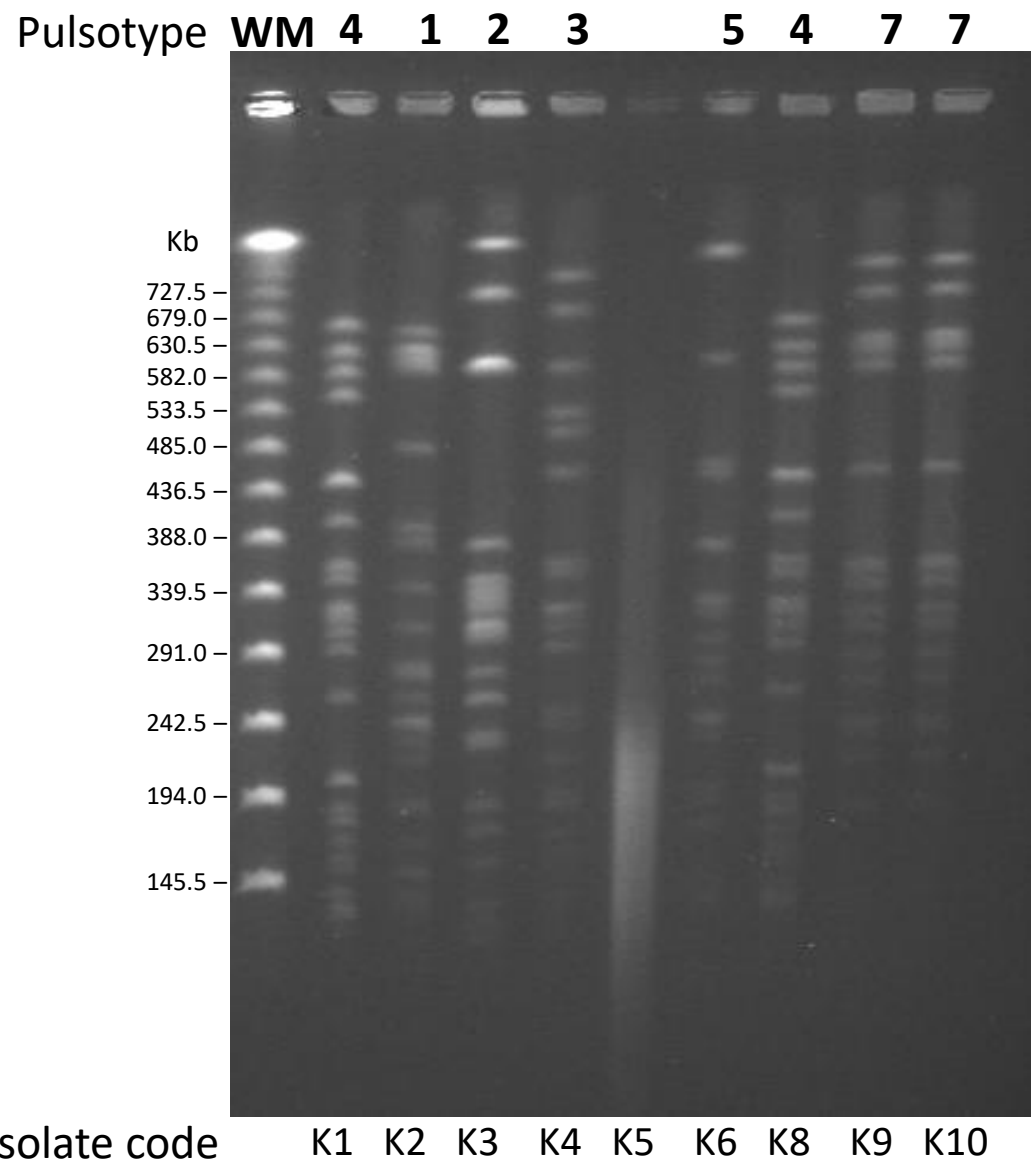


A07 = Outbreak strain- PFGE pattern (pulsotype 4)

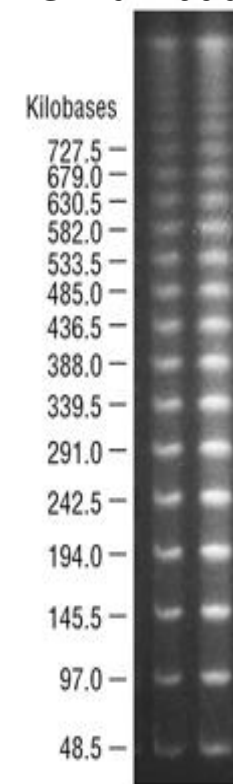
Uncropped Gels
Klebsiella pneumoniae

Klebsiella pneumoniae (n = 29, pulsotypes = 25)
Hospital General de México Dr. Eduardo Liceaga 2020

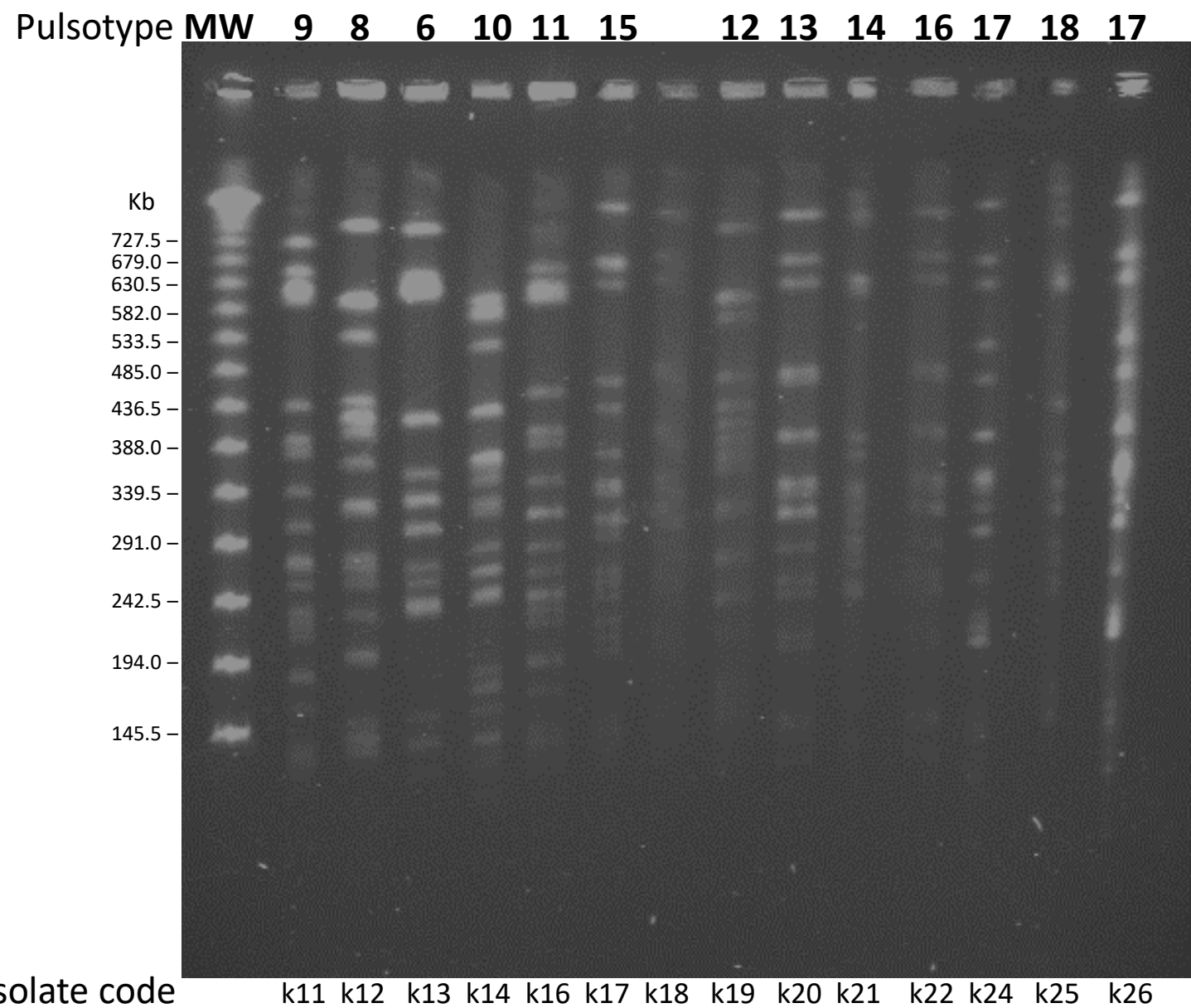
Gel 1 *Klebsiella pneumoniae*



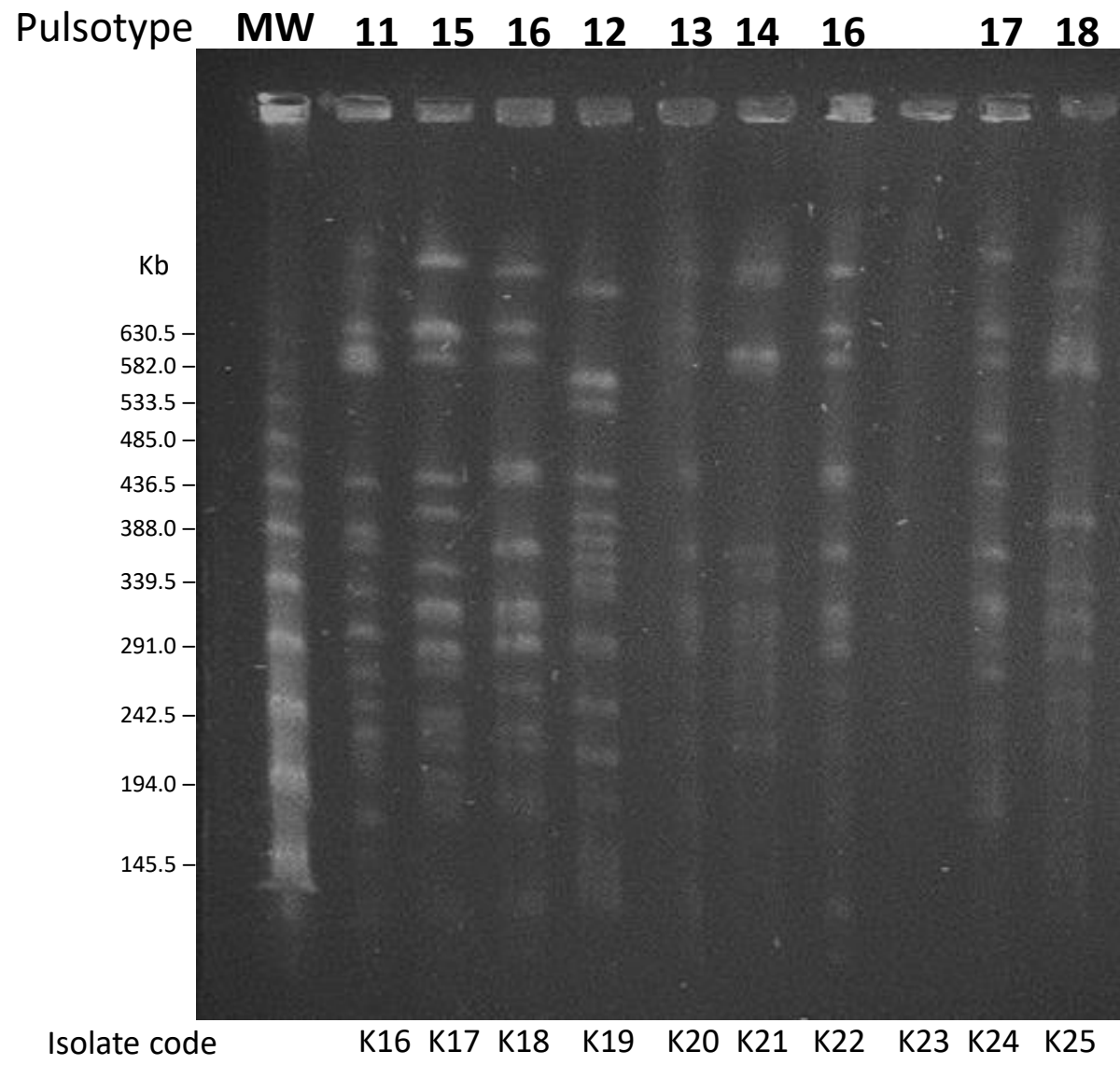
Molecular weight
PFGE lambda ladder



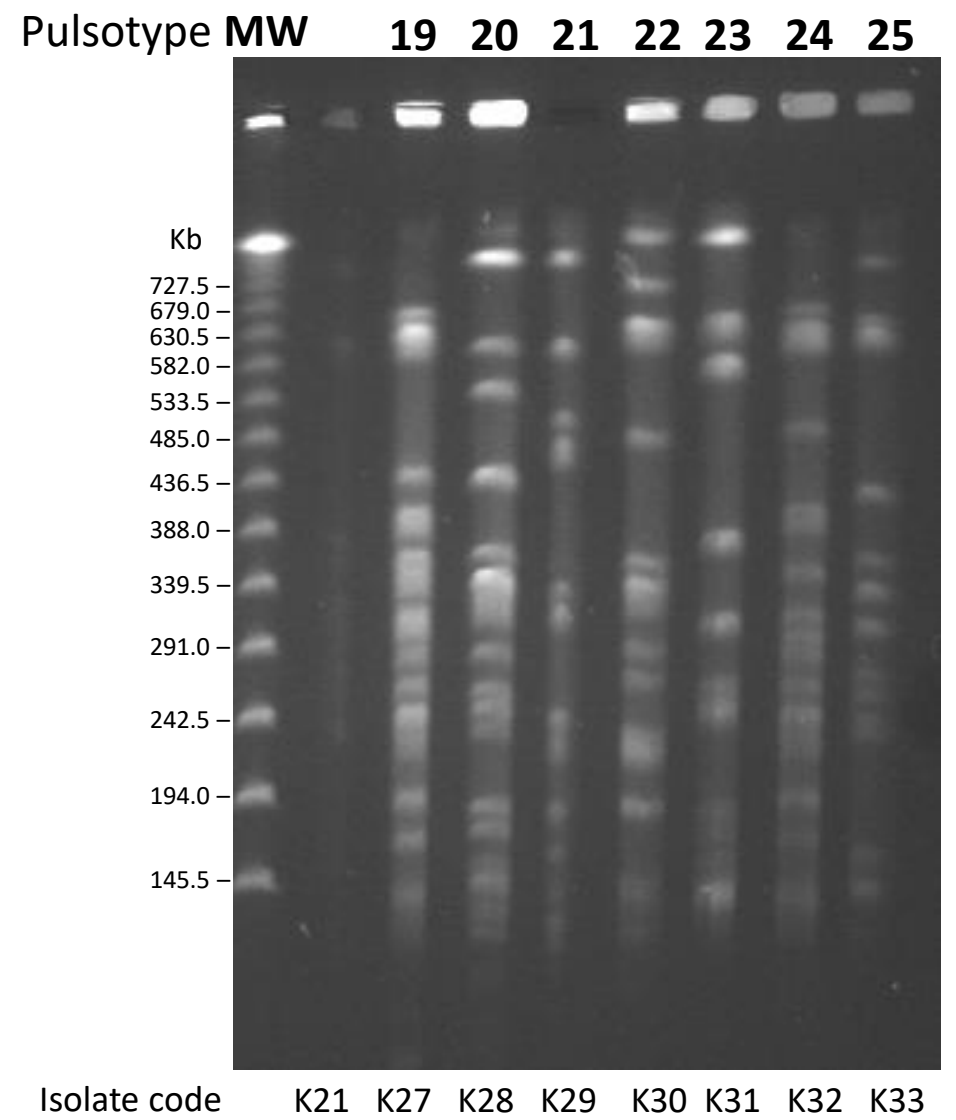
Gel 2 *Klebsiella pneumoniae*



Gel 3 *Klebsiella pneumoniae*

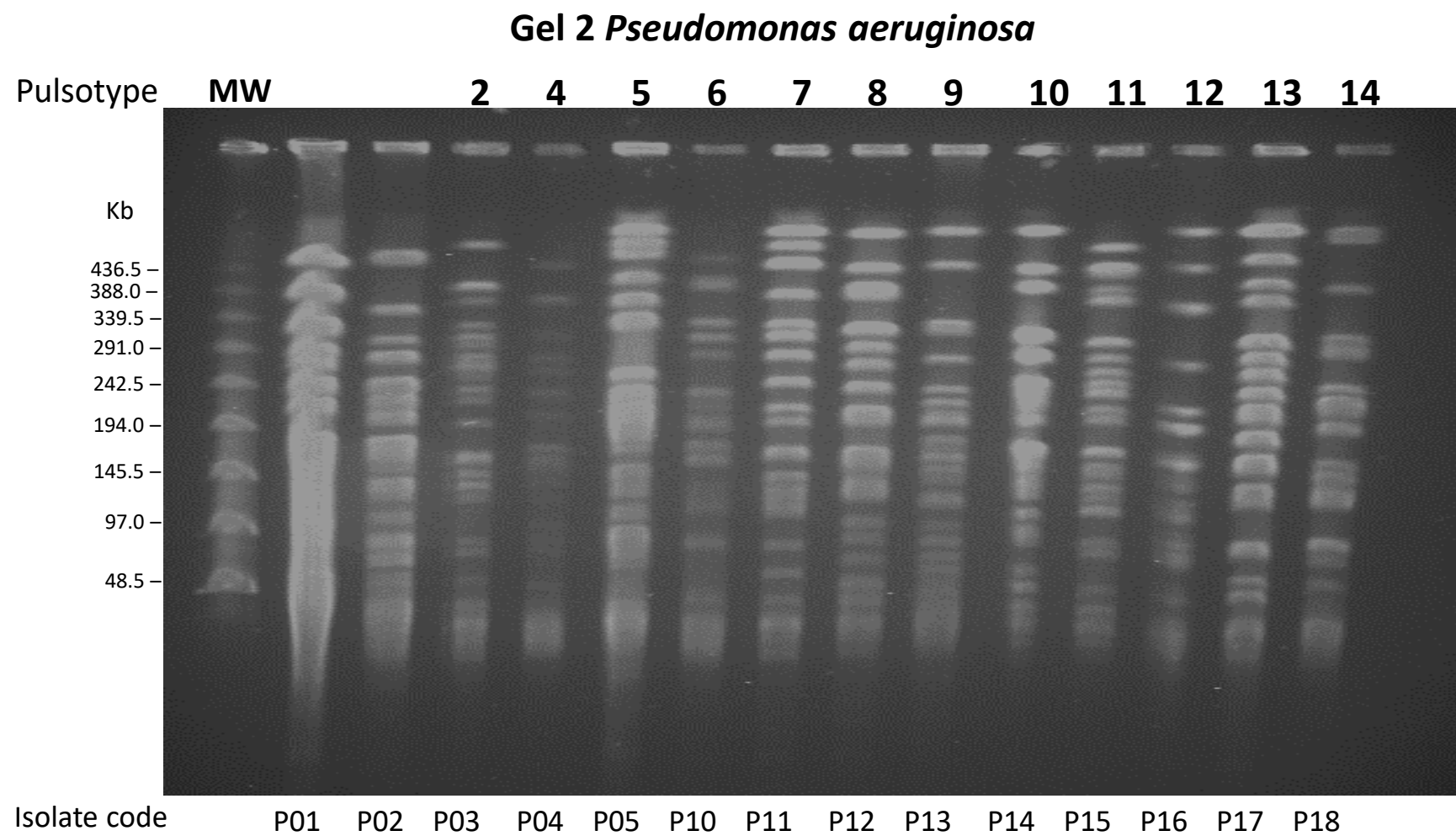
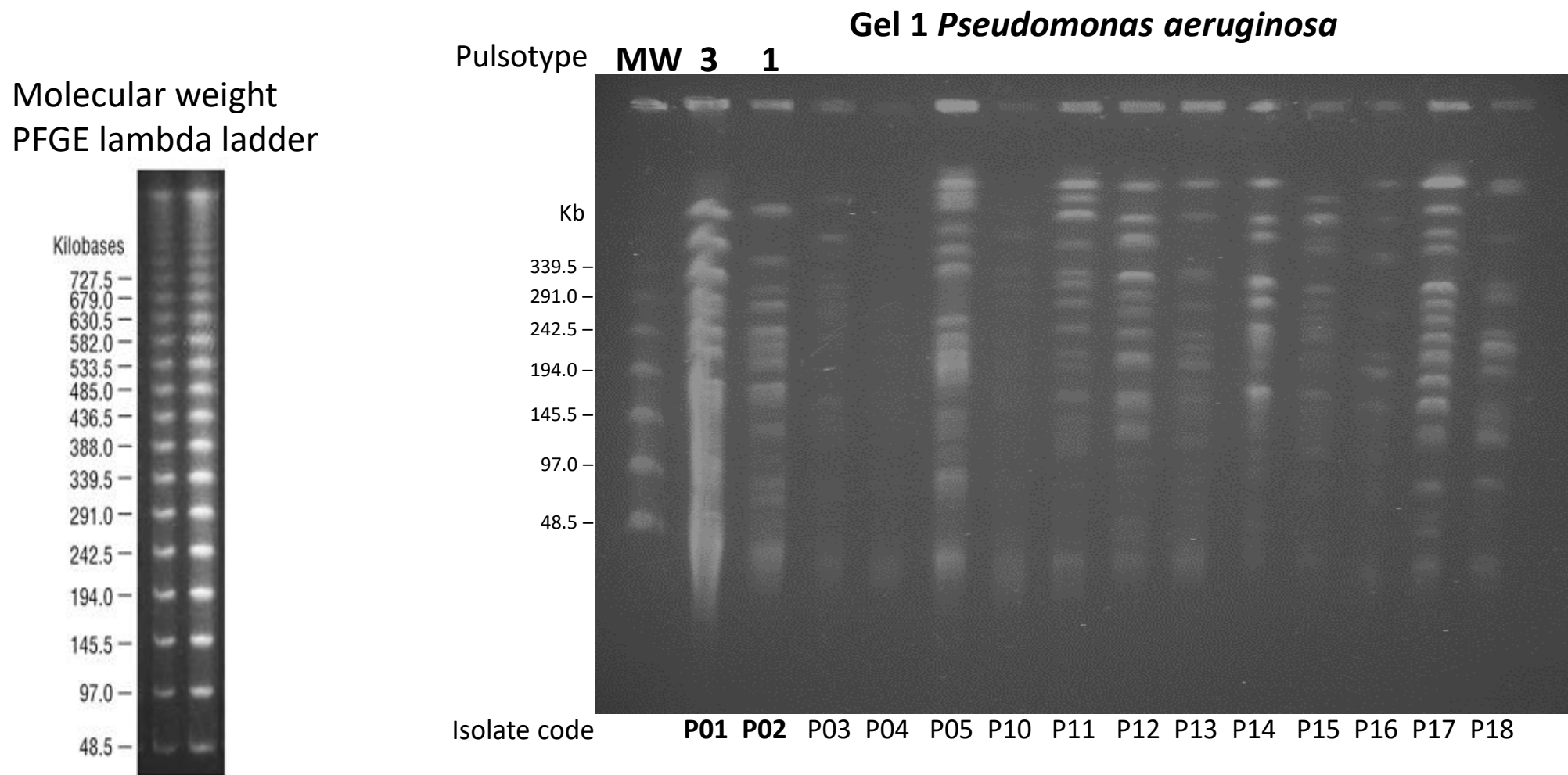


Gel 4 *Klebsiella pneumoniae*



Uncropped Gels
Pseudomonas aeruginosa

Pseudomonas aeruginosa (n = 21, pulsotypes = 20)
Hospital General de México Dr. Eduardo Liceaga 2020

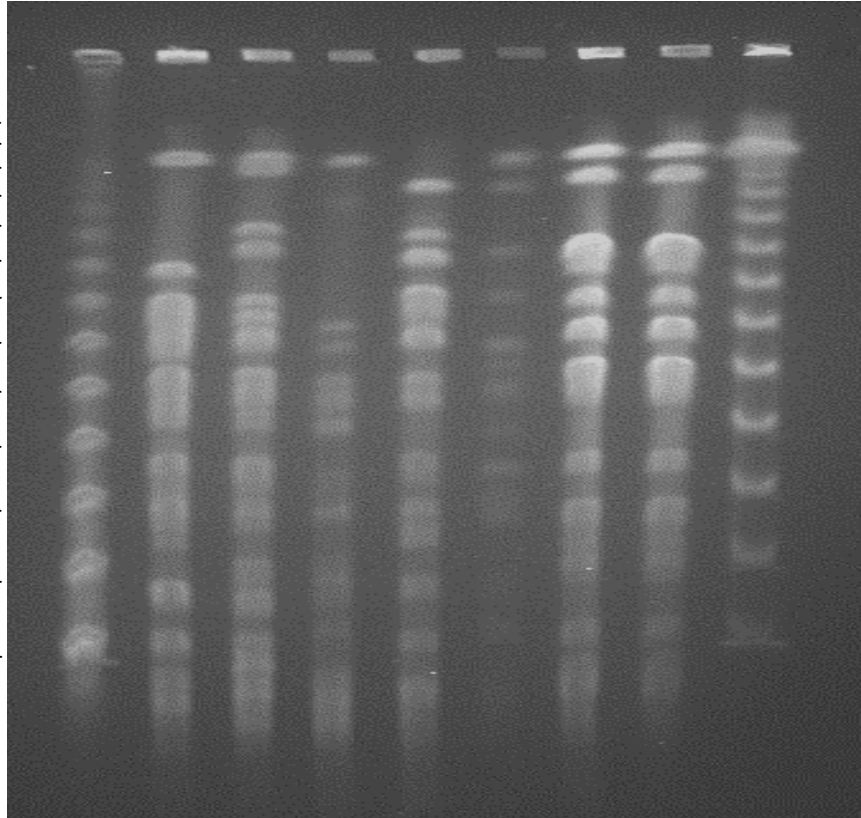


Gel 3 *Pseudomonas aeruginosa*

Pulsotype **MW 15 16 17 18 19 20 20 MW**

Kb

630.5 –
582.0 –
533.5 –
485.0 –
436.5 –
388.0 –
339.5 –
291.0 –
242.5 –
194.0 –
145.5 –
97.0 –
48.5 –

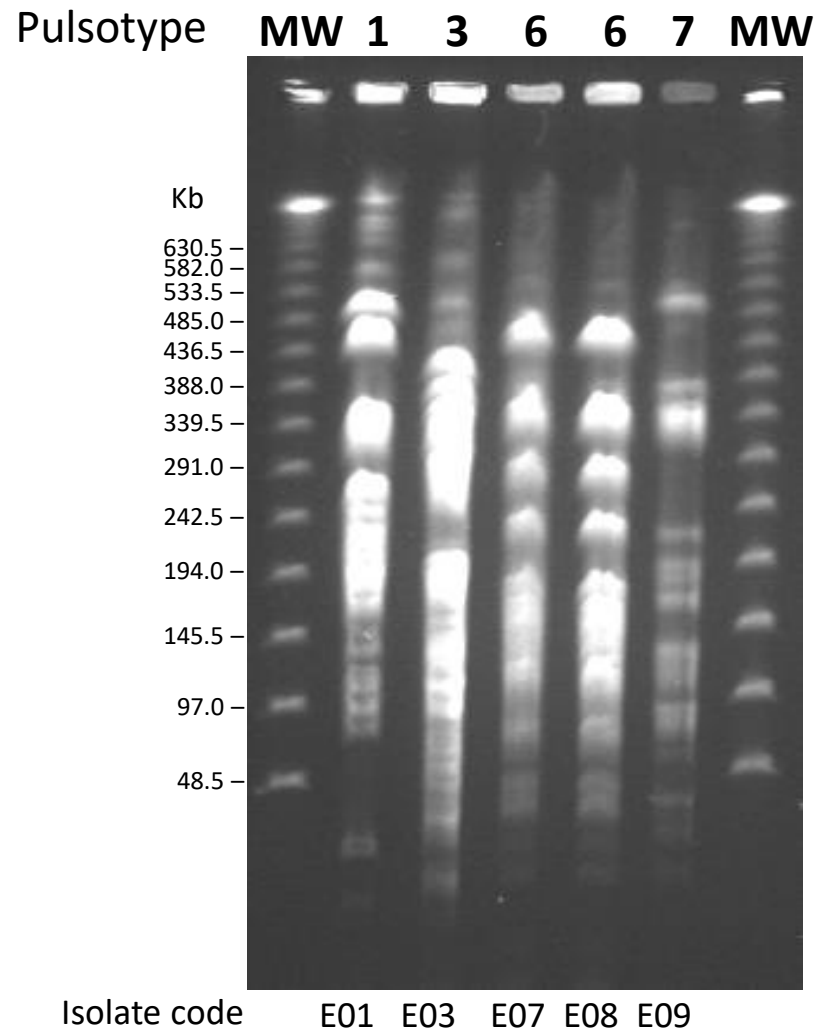


Isolate code P19 P20 P21 P22 P23 P24 P25

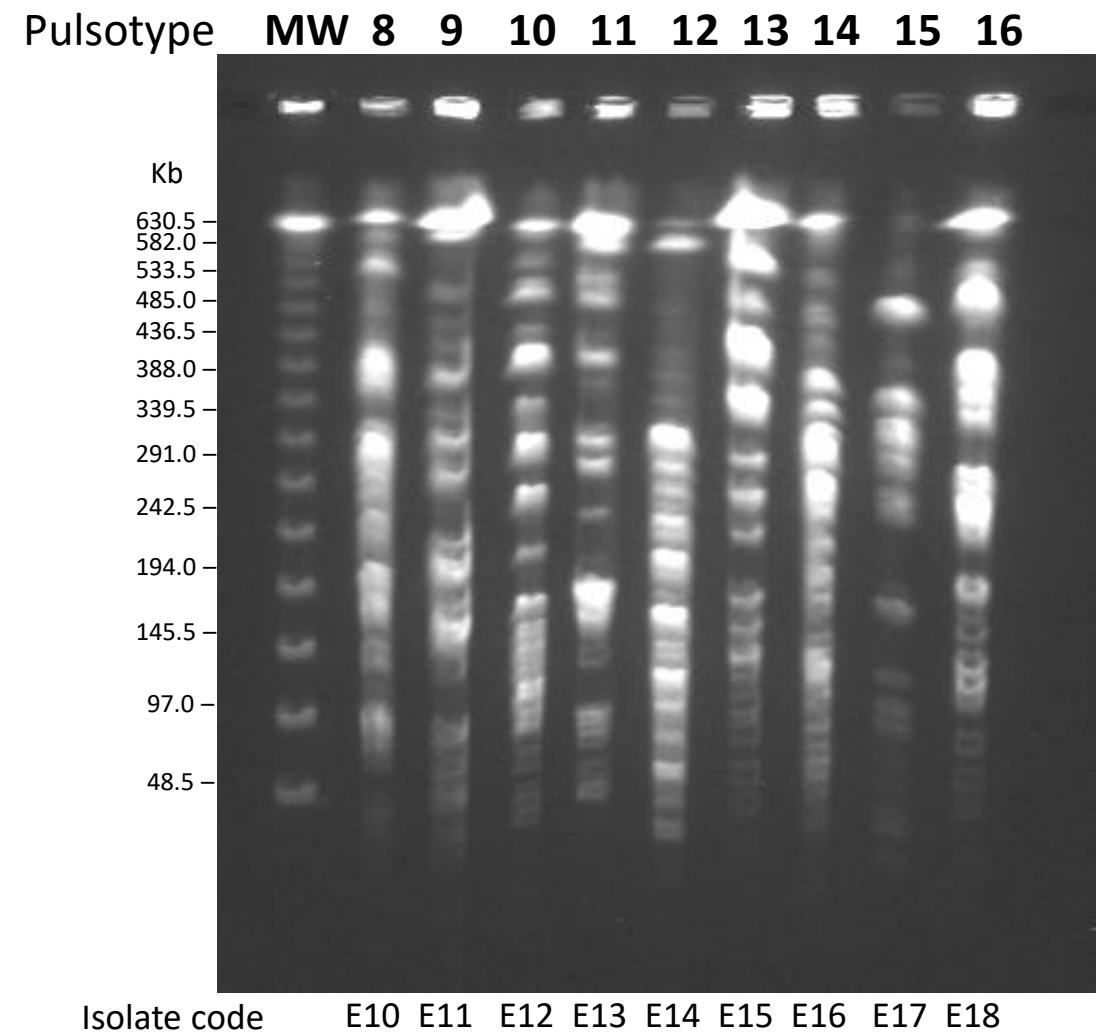
Uncropped Gels
Enterobacter spp

Enterobacter (n = 17, pulsotypes = 16)
Hospital General de México Dr. Eduardo Liceaga 2020

Gel 3 *Enterobacter*



Gel 1 *Enterobacter*



Gel 2 *Enterobacter*

