

Supplemental figures for:

**Phylogeography of sharks and rays: A global review based on life history traits
and biogeographic partitions**

Sudha Kottillil, Chetan Rao, Brian W. Bowen, Kartik Shanker

Figures:

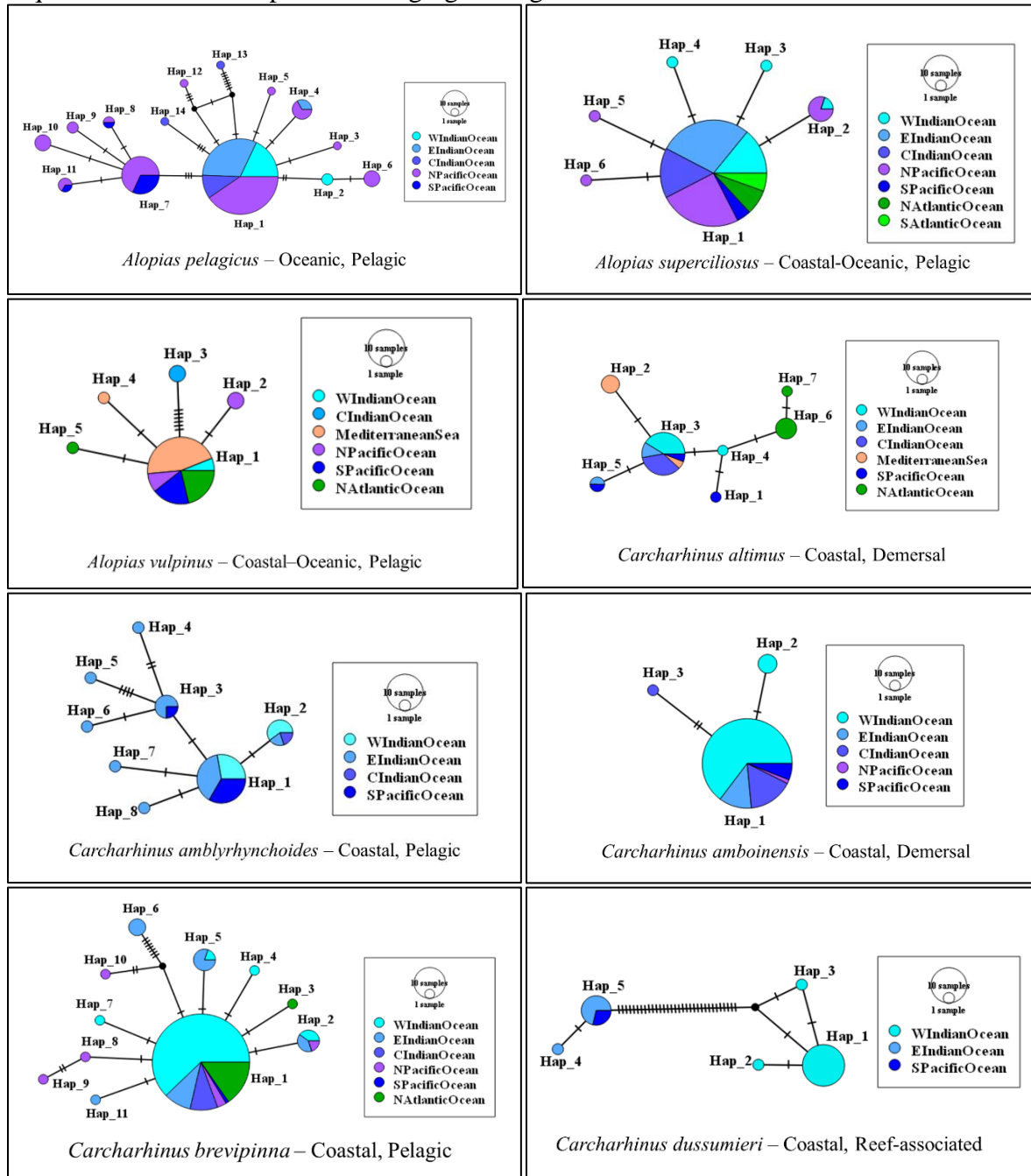
Figure S1

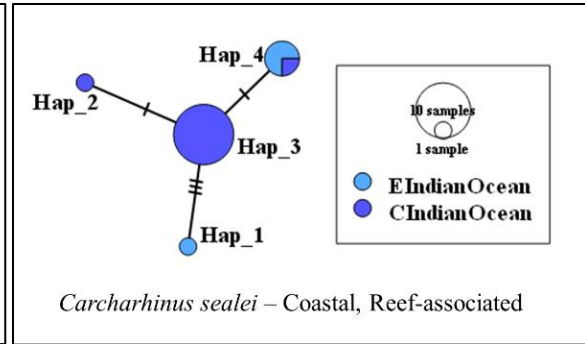
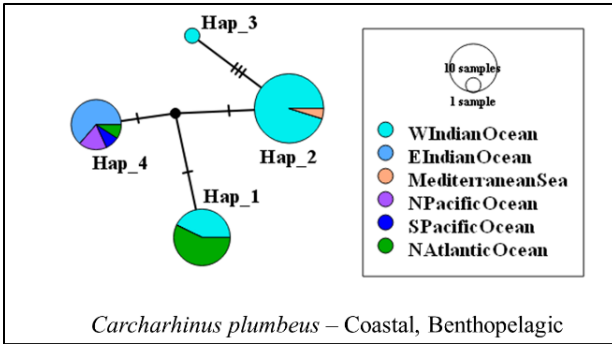
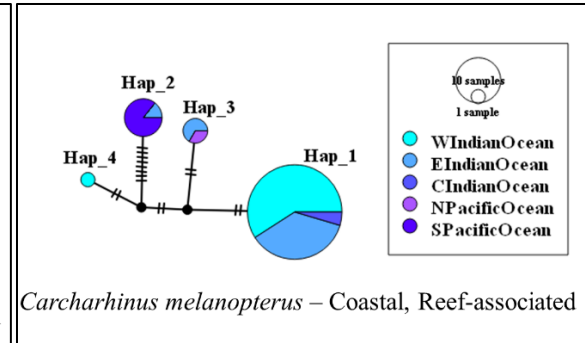
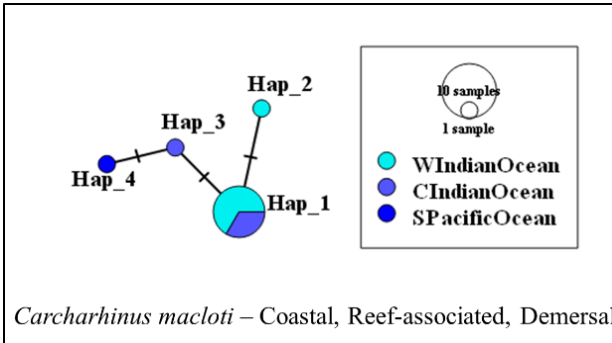
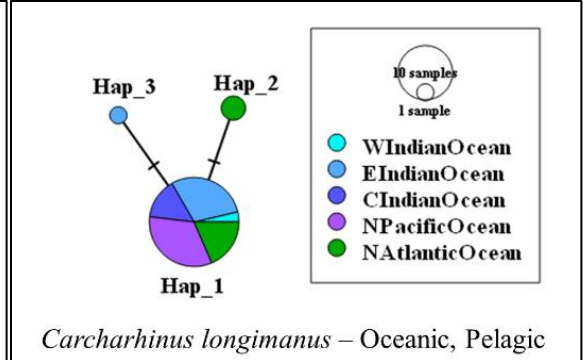
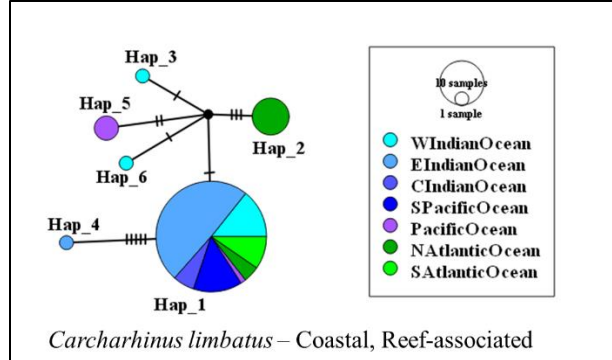
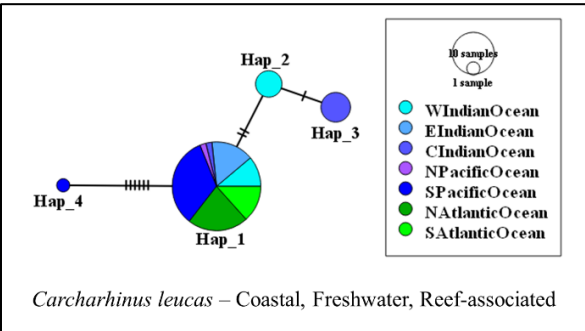
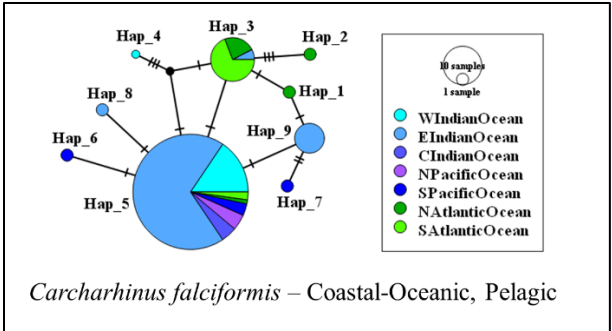
Page 2

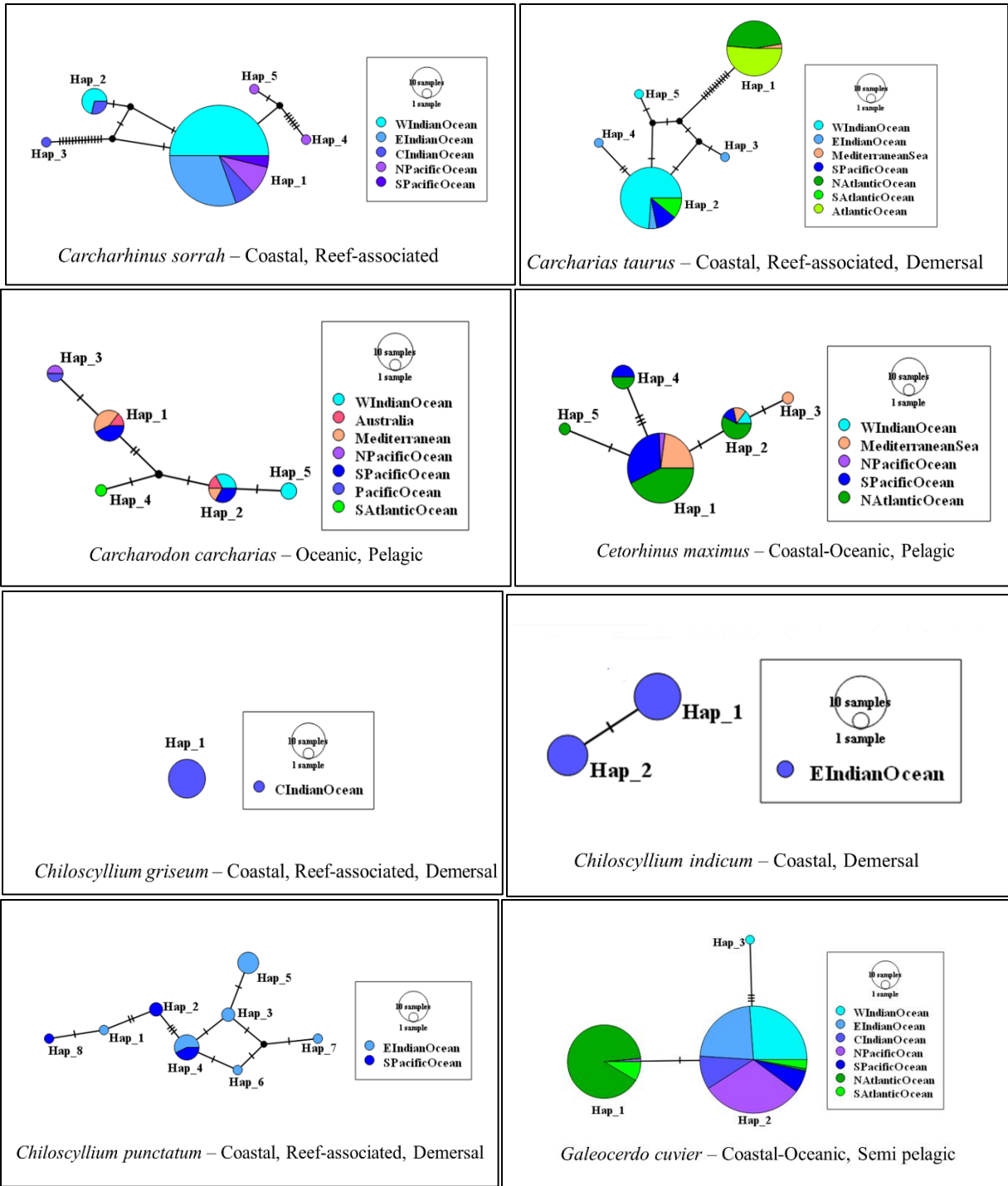
Figure S2

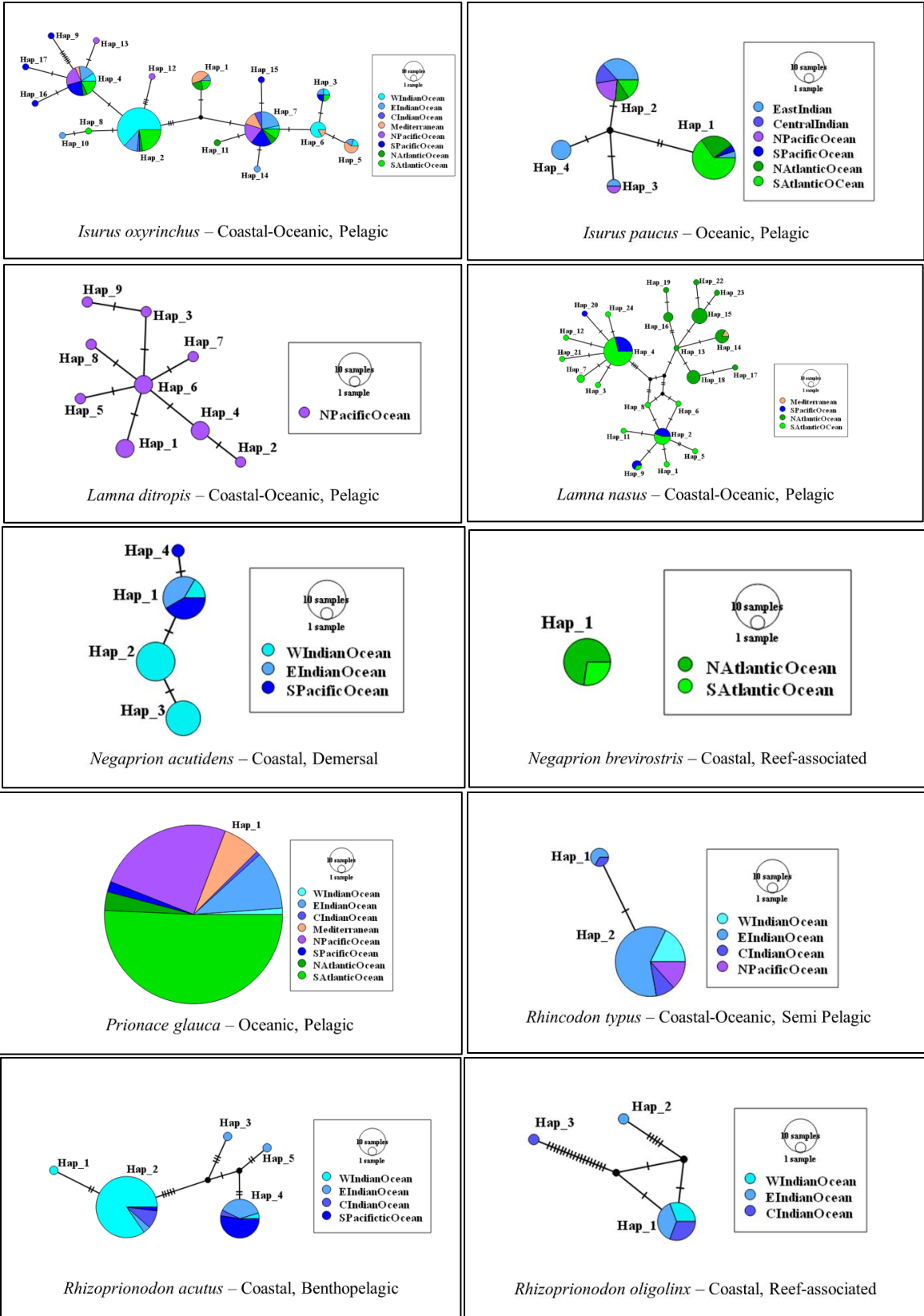
Page 7

Figure S1: Median joining haplotype networks constructed using cytochrome c oxidase subunit I sequences of 40 shark species belonging to 17 genera.









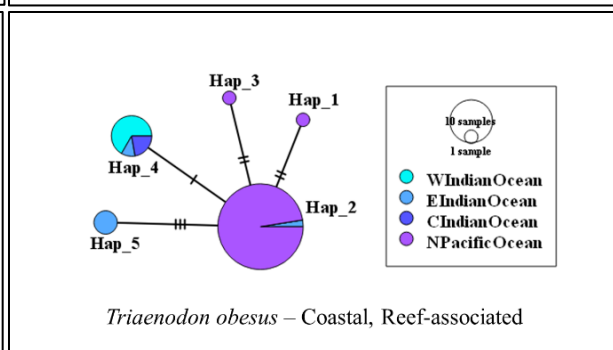
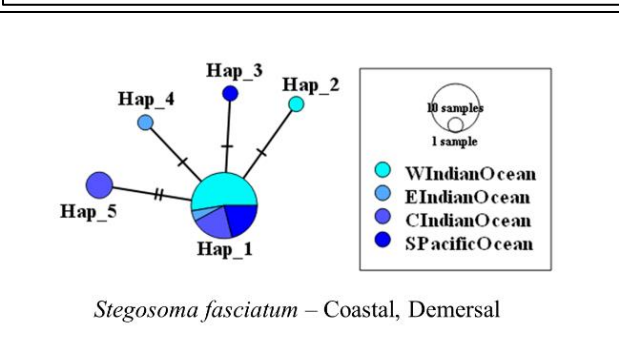
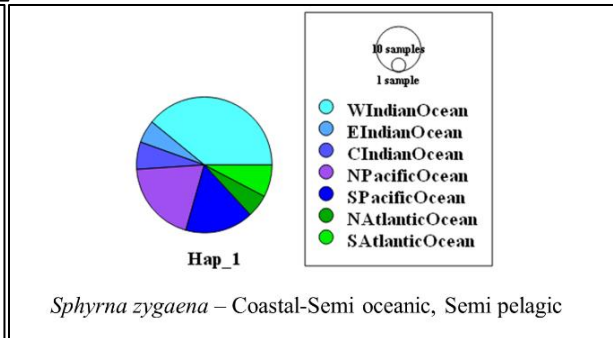
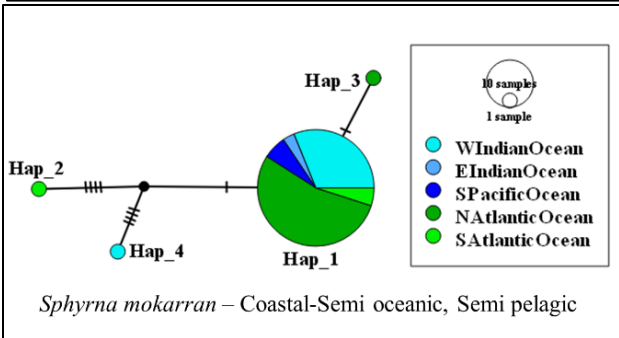
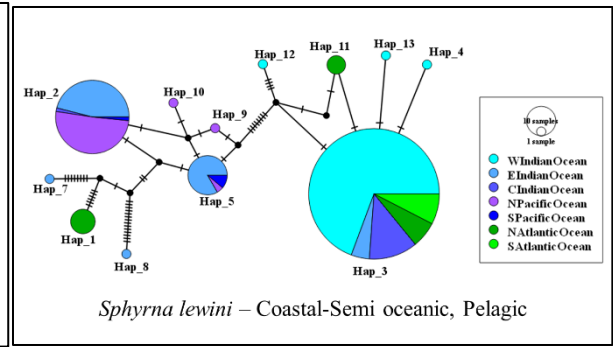
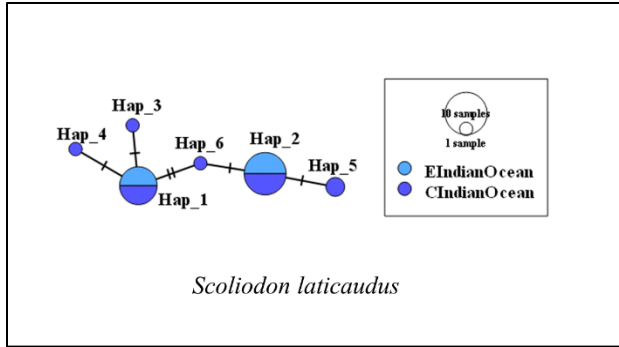


Figure S2: Median joining haplotype networks constructed using cytochrome c oxidase subunit I sequences of 19 ray species belonging to 11 genera.

