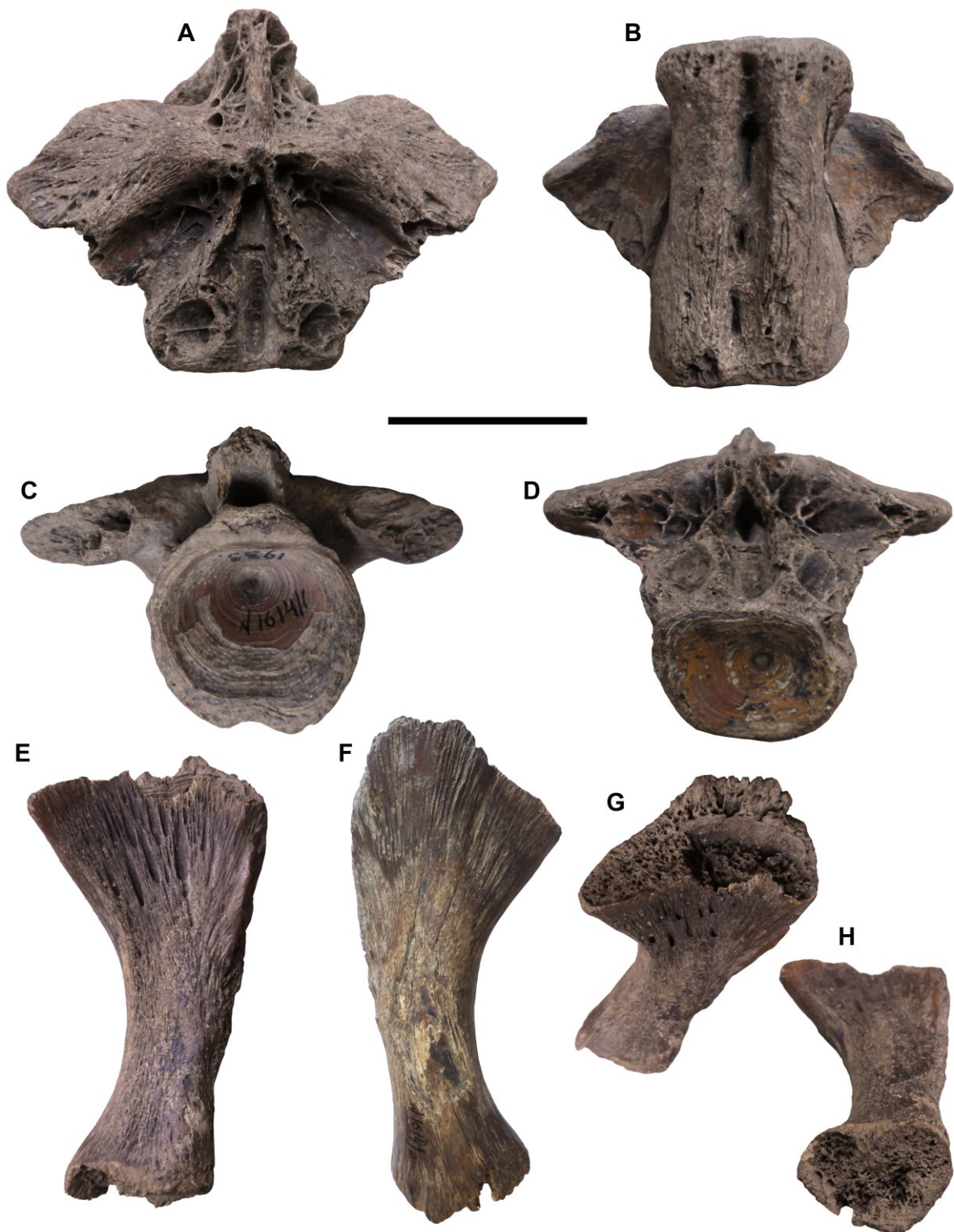


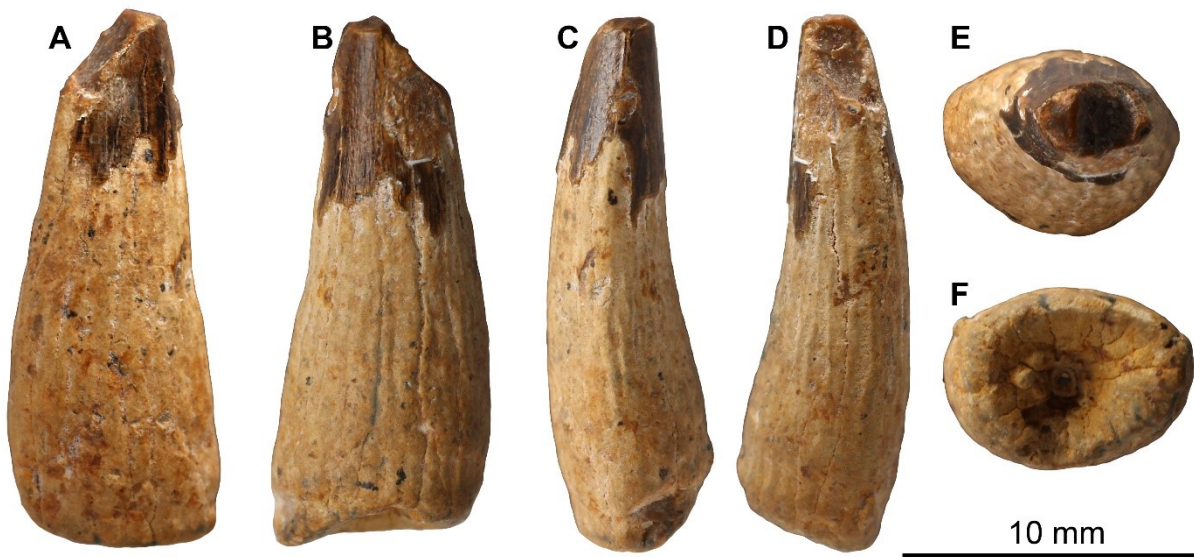
## SUPPLEMENTARY FIGURES



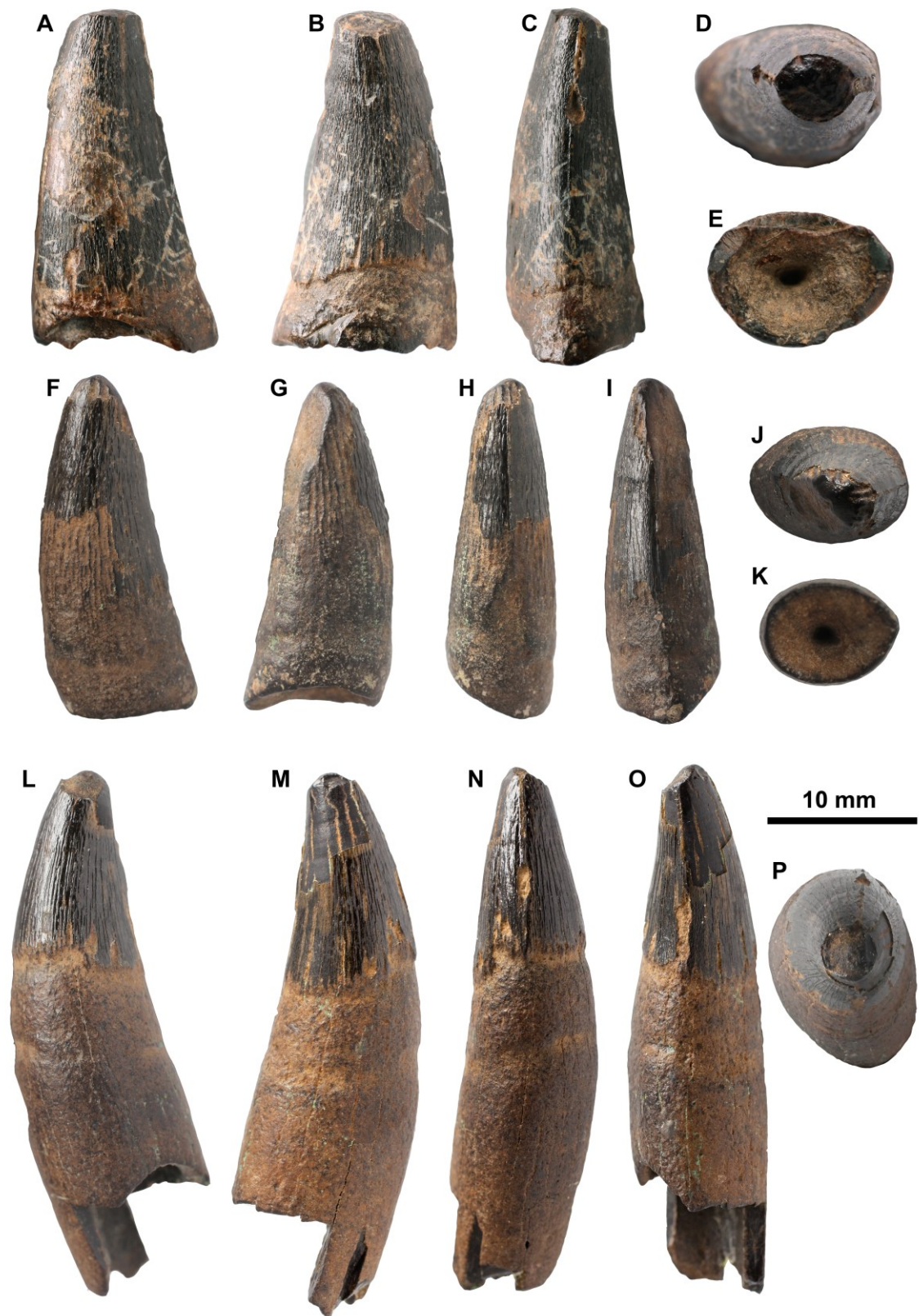
**FIGURE S1.** Weberian vertebra (A–D) and ceratohyale (E–H) of *Silurus* (XKM 1614/1 & 1614/2) from Quaternary deposits of Khoroshovsky Island on the Volga River near Khvalynsk, Saratov Oblast, Russia.



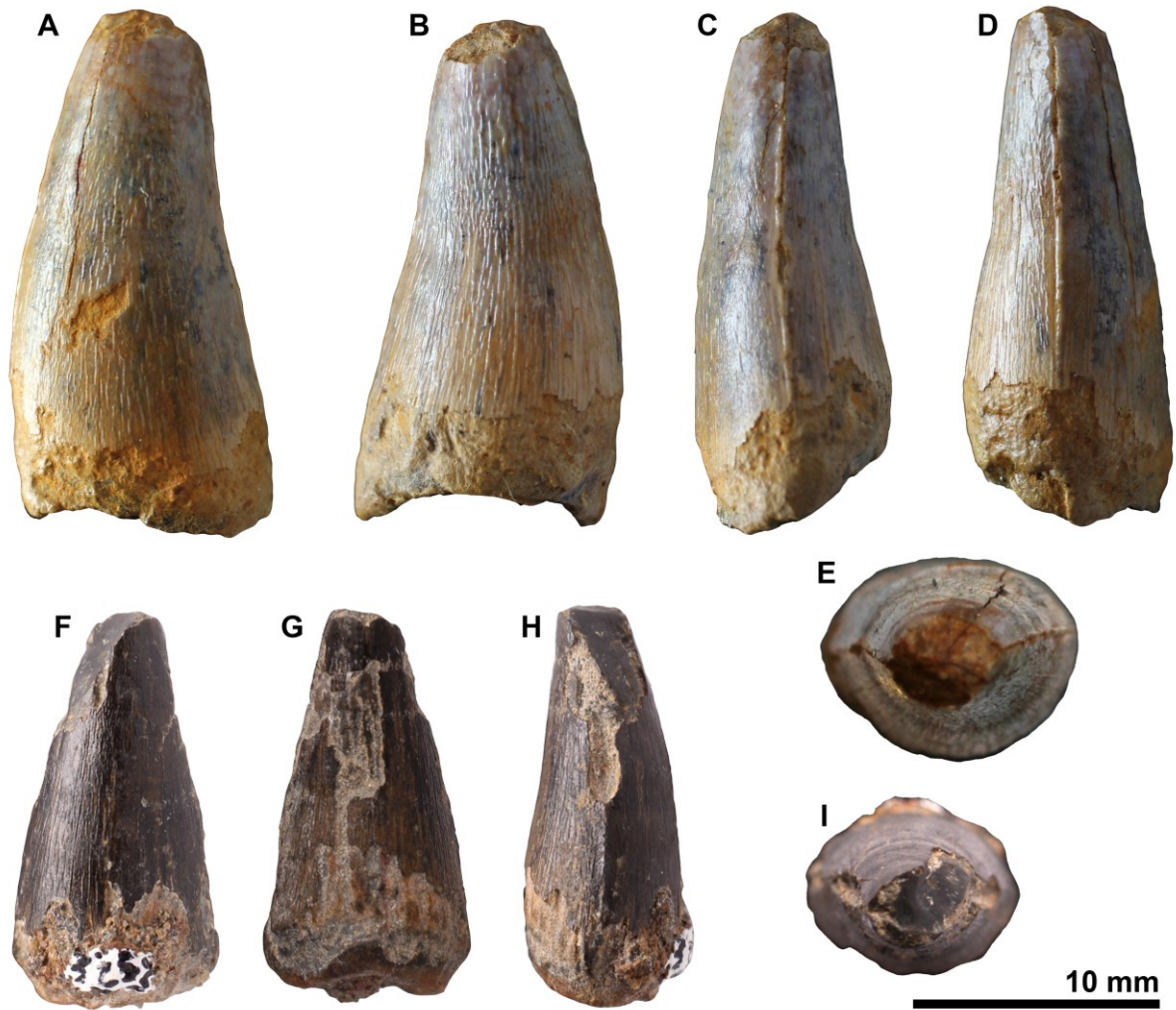
**FIGURE S2.** *Thalattosuchia* indet. tooth crown (PIN 5819/5) from the lower Bajocian of Tonkiy Gully, Volgograd Oblast, Russia; in labial (A), lingual (B), mesial/distal (C, D), and apical (E) views.



**FIGURE S3.** *Metriorhynchidae* indet. (PIN 5819/7) from the middle Callovian of the Rechitsy Village, Moscow Oblast, Russia; in labial (A), lingual (B), distal (C), mesial (D), apical (E) and basal (F) views.



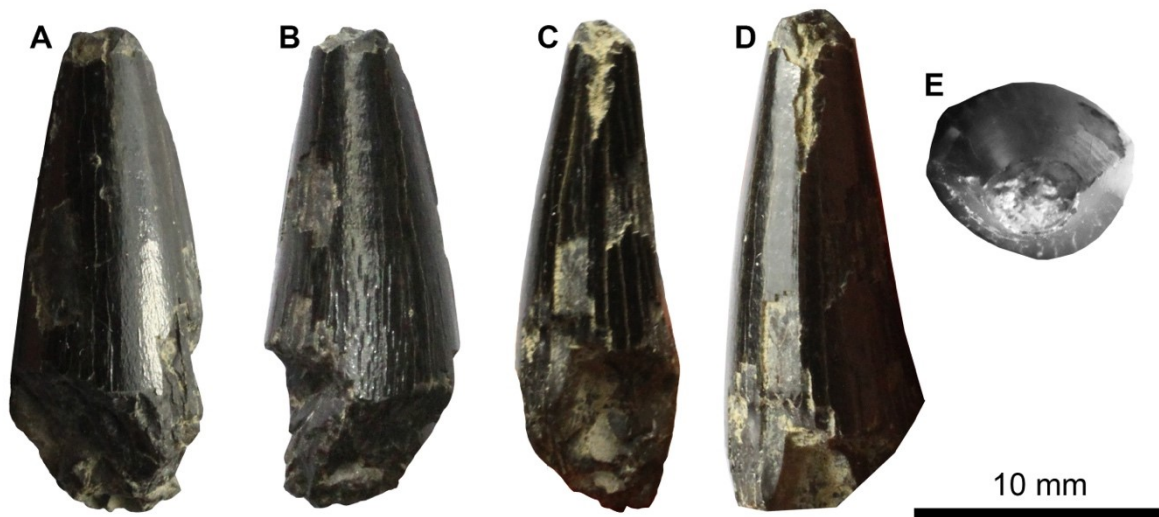
**FIGURE S4.** Metriorhynchid tooth crowns from the lower Callovian of the Unzha River, Kostroma Oblast, Russia. **A–E**, Metriorhynchidae indet. (PIN 5819/6). **F–K**, Metriorhynchidae indet. (PIN 5819/1). **I–P**, Metriorhynchidae indet. (PIN 5819/2). Teeth are depicted in labial (A, F, L), lingual (B, G, M), distal (C, I, O), mesial (H, N), apical (D, J, P), and basal (E, K) views.



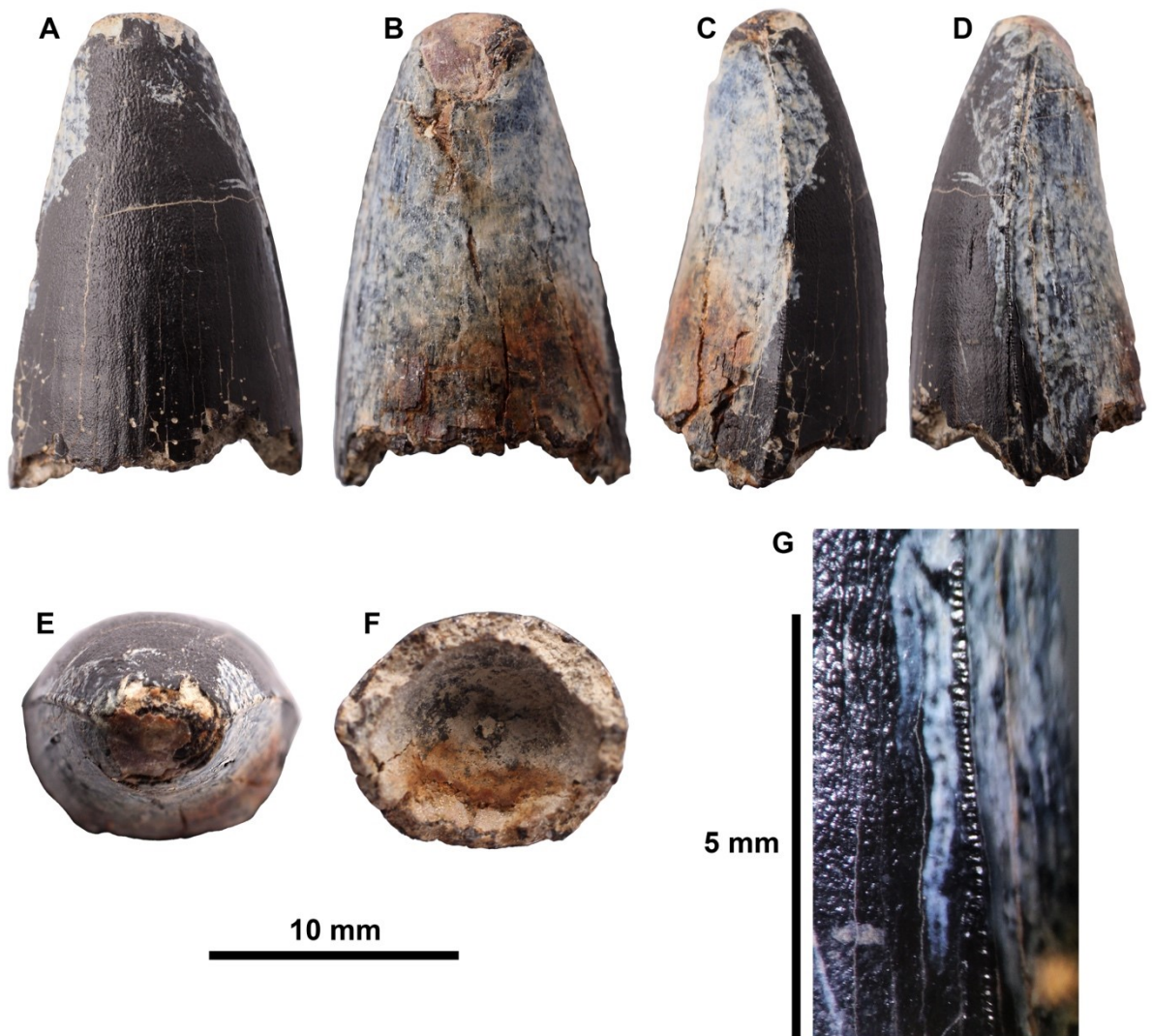
**FIGURE S5.** Tooth crowns of Metriorhynchidae cf. *Thalattosuchus* from the lower and middle Callovian of European Russia. **A–E**, cf. *Thalattosuchus* (MRUM 1315/1) from the lower Callovian of Gumny village, Republic of Mordovia, Russia; **F–I**, cf. *Thalattosuchus* (PIN 5477/3253) from the middle Callovian, Mikhailovcement Quarry, Ryazan Oblast, Russia. Crowns are depicted in labial (A, F), lingual (B, G), mesial (C, H), distal (D), and apical (E, I) views.



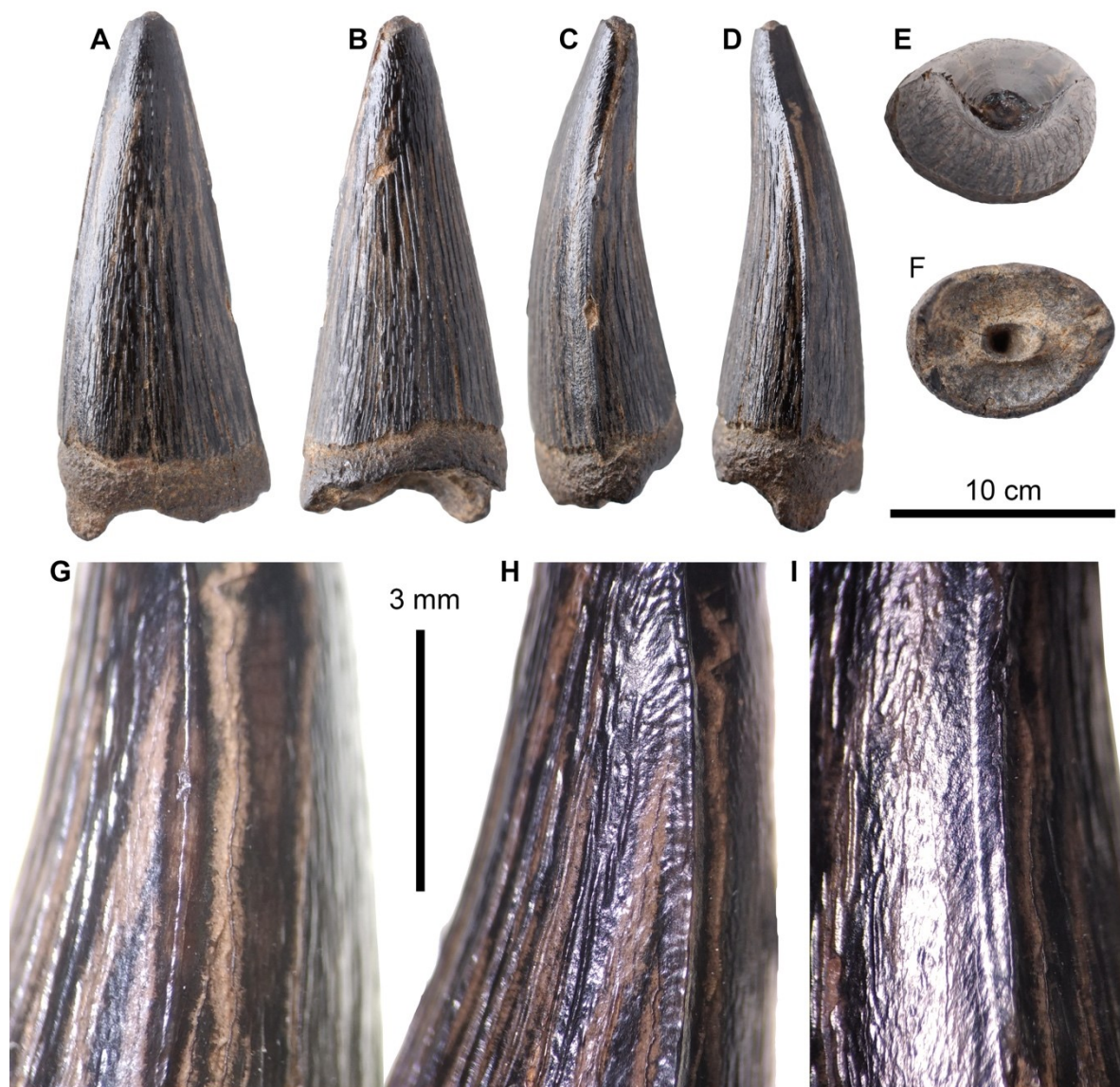
**FIGURE S6.** *Tyrannoneustes* sp. tooth crown (PIN 5477/2451) from the middle Callovian of Ryasan Oblast, Russia; in labial (A), lingual (B), distal (C), mesial (D), and apical (E) views.



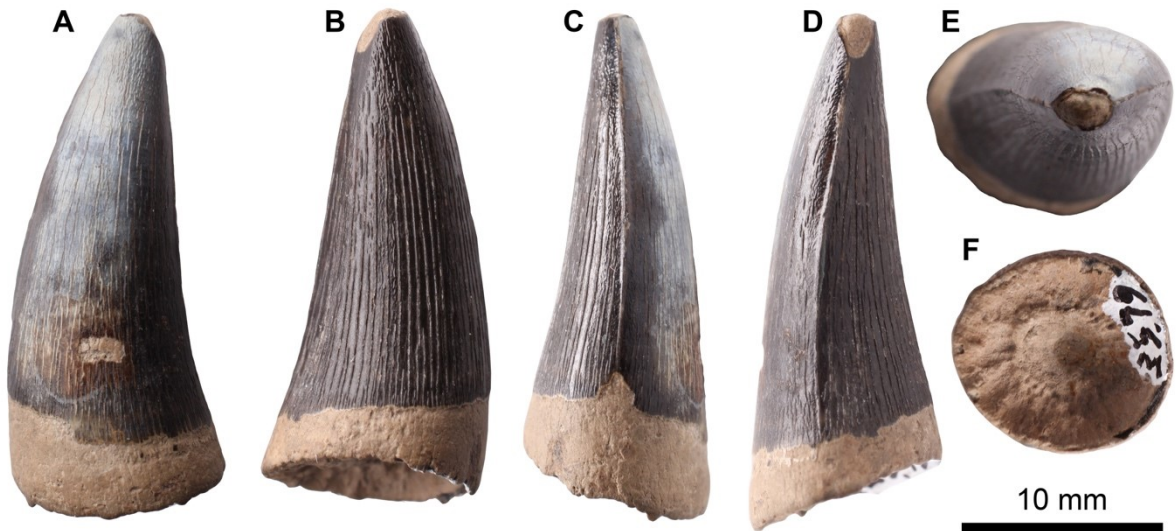
**FIGURE S7.** *Tyrannoneustes* sp. tooth crown (PIN 5818/9) from the middle Callovian of Moscow Oblast, Russia; in labial (A), lingual (B), mesial (C), distal (D), and apical (E) views.



**FIGURE S8.** Geosaurini indet. Morphotype 1 tooth crown (SSU 14/31) from the lower Callovian of Saratov; in labial (A), lingual (B), mesial and distal (C, D), apical (E), and basal (F) views, and magnified carina (G).



**FIGURE S9.** Geosaurini indet. Morphotype 2 tooth crown (SGM BX-12) from the lower Callovian of Makariev District, Kostroma Oblast; in labial (A), lingual (B), distal (C), mesial (D), apical (E), and basal (F) views; magnified photographs of the carina (G–I).



**FIGURE S10.** *Metriorhynchidae* cf. ‘E’-clade tooth crown (PIN 5477/3579) from the Oxfordian–Kimmeridgian of Rybaki village, Moscow Oblast, Russia; in labial (A), lingual (B), mesial (C), distal (D), apical (E), and basal (F) views.



**FIGURE S11.** *Torvoneustes* sp. tooth crown (UPM 3026) from the Oxfordian of Okshovo village, Vladimir Oblast, Russia; in labial (A), lingual (B), distal (C), mesial (D), and apical (E) views.