

Figure 1B

The original blot of GAPDH in LC cells

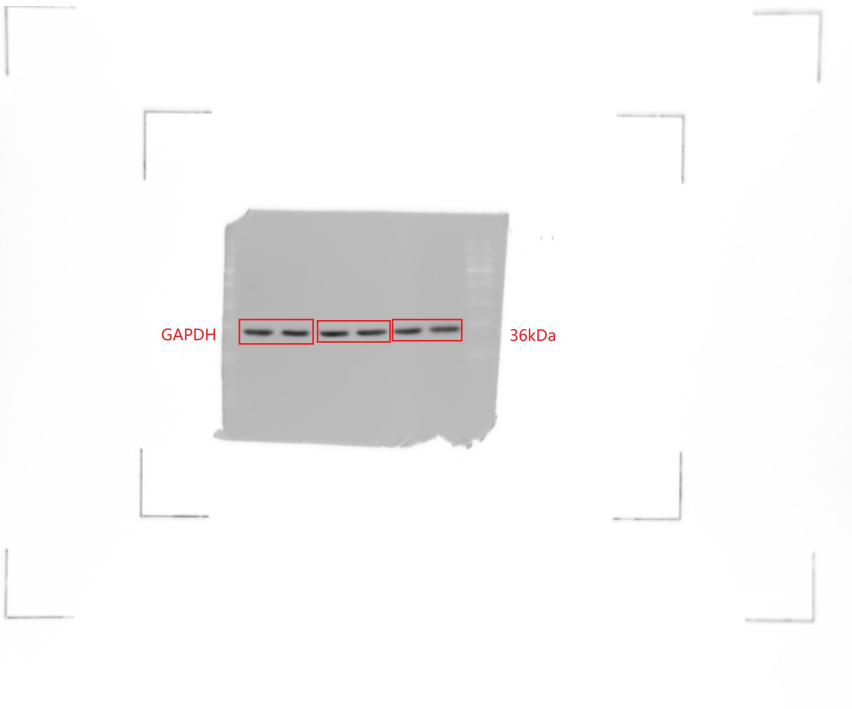


Figure 1B

The original blot of Sema4A in LC cells

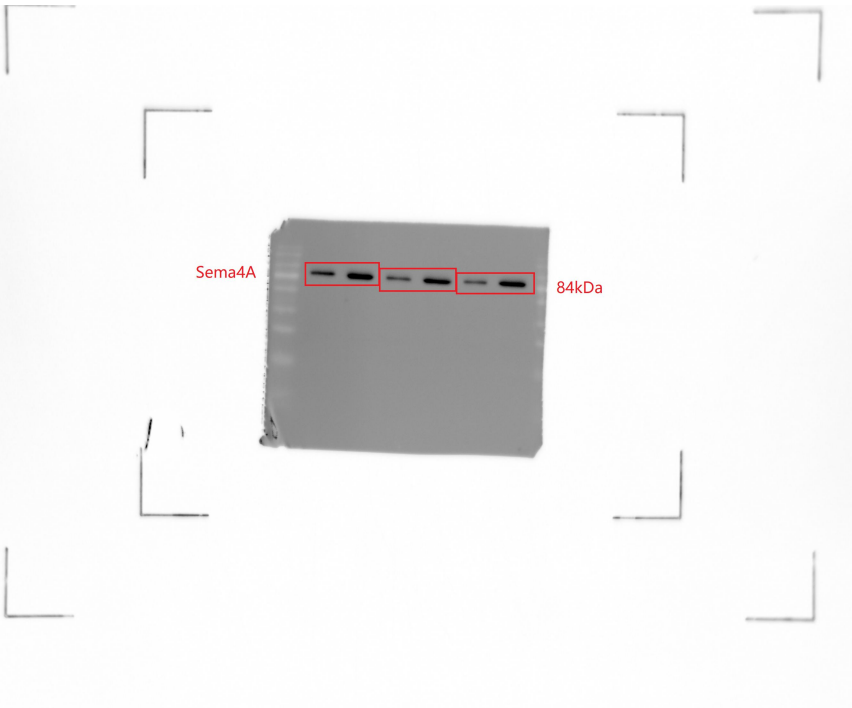


Figure 2
The original blot of GAPDH in LC cells

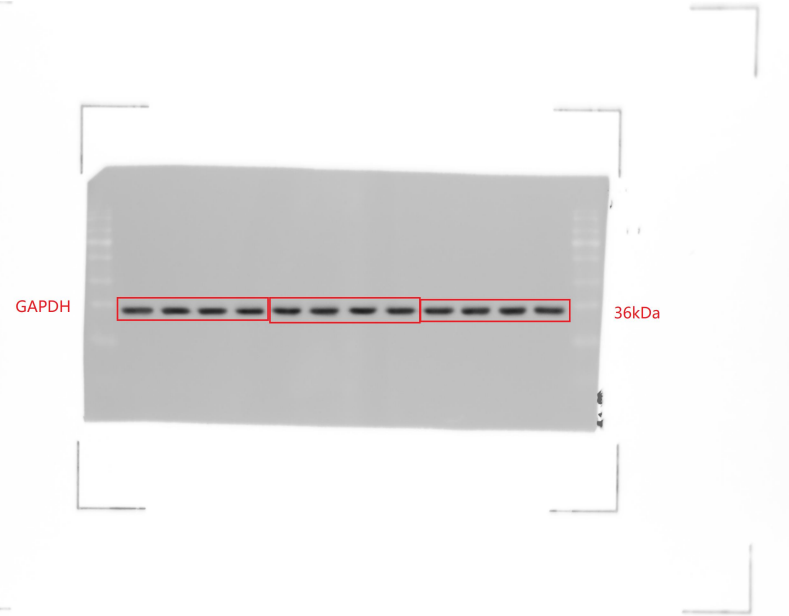


Figure 2
The original blot of NF- κ B in LC cells

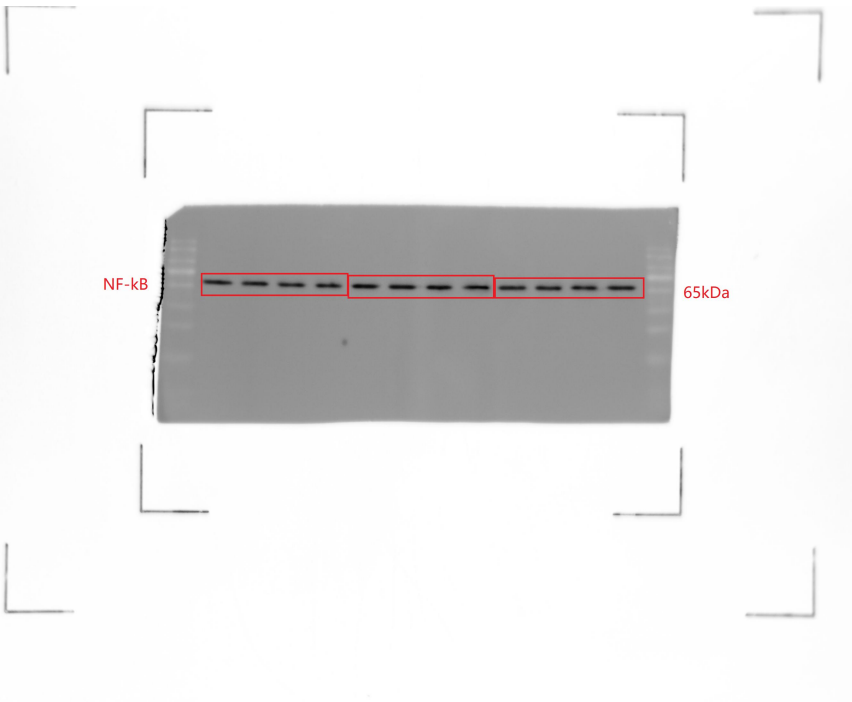


Figure 2
The original blot of p-NF-kB in LC cells

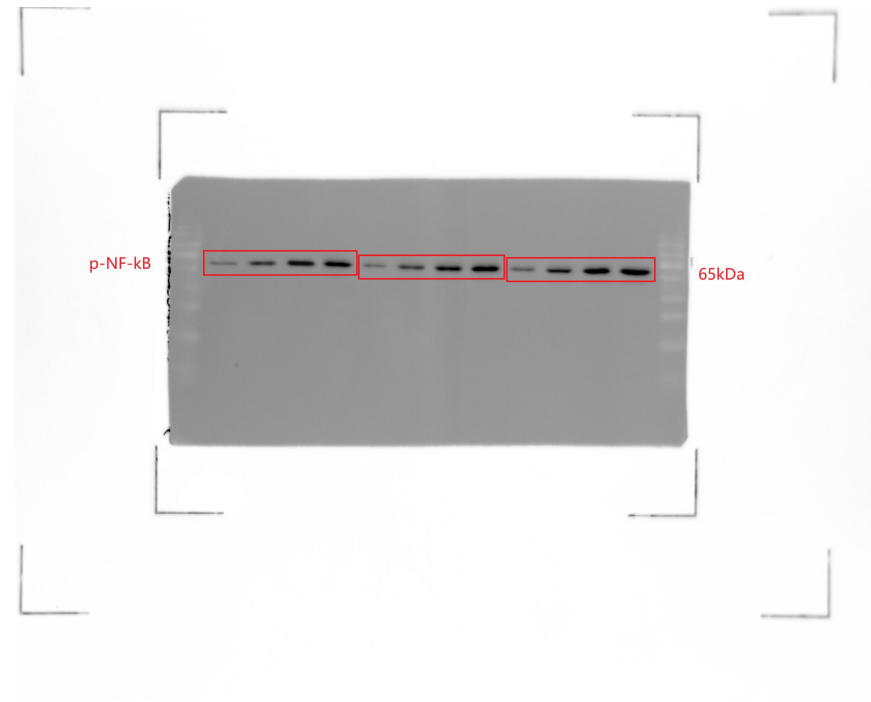


Figure 2
The original blot of Stat3 in LC cells

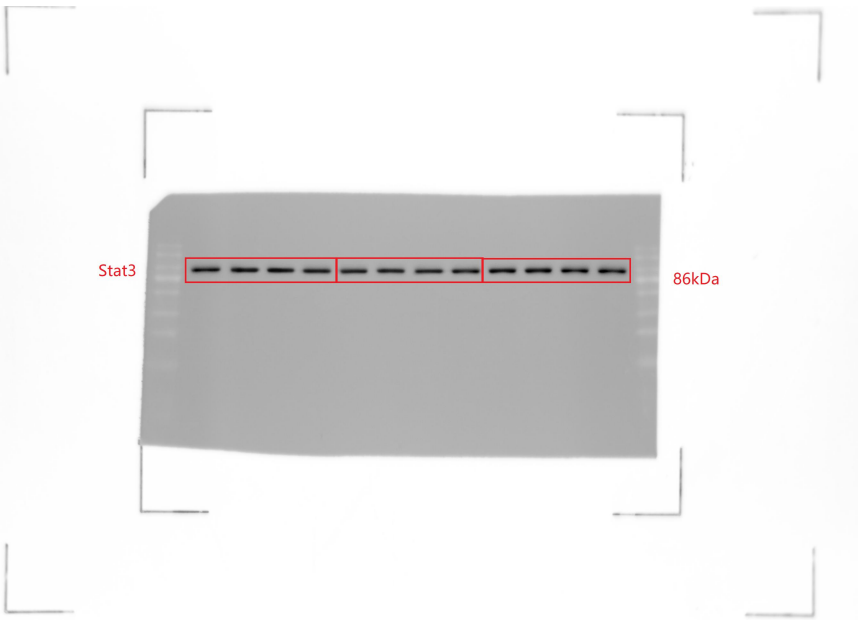


Figure 2

The original blot of p-Stat3 in LC cells

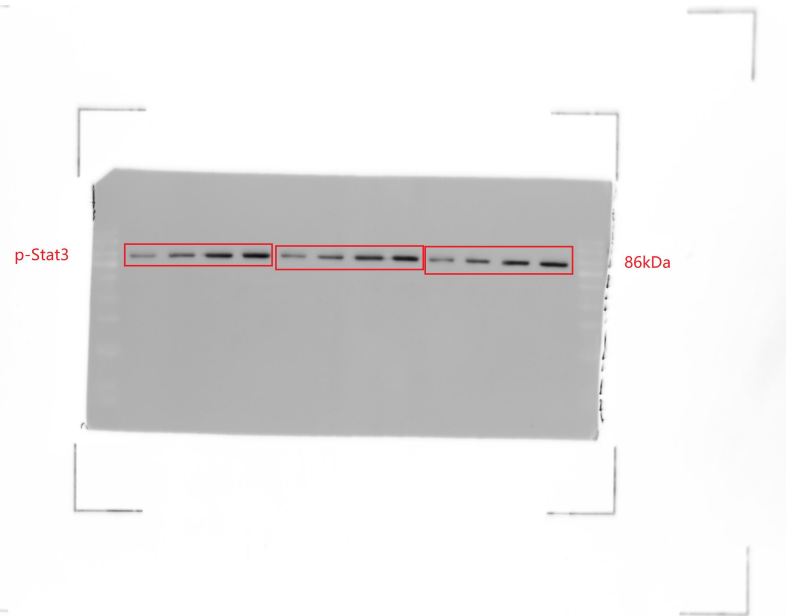


Figure 2
The original blot of MAPK in LC cells

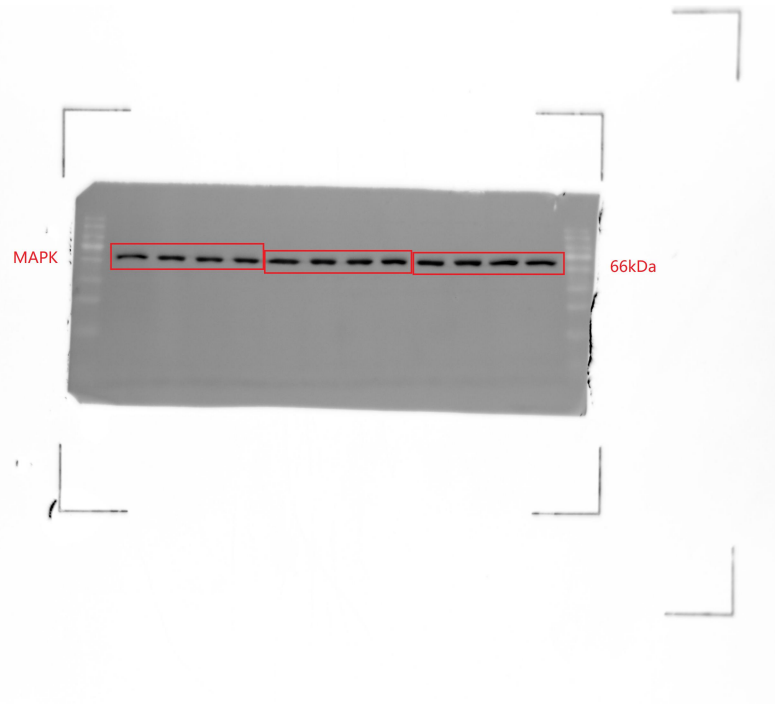


Figure 2

The original blot of p-MAPK in LC cells

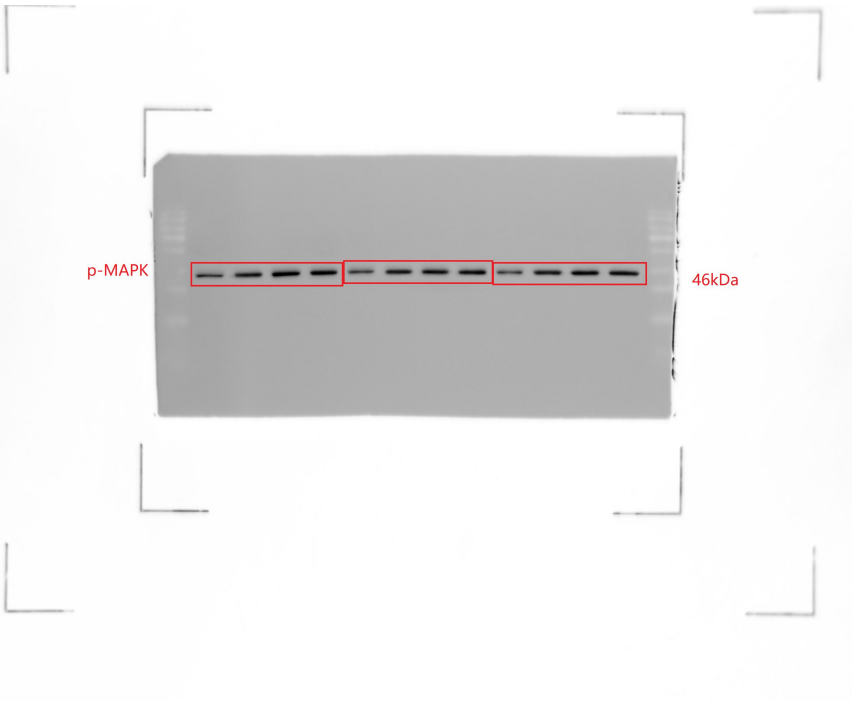


Figure 6
The original blot of GAPDH in LC cells

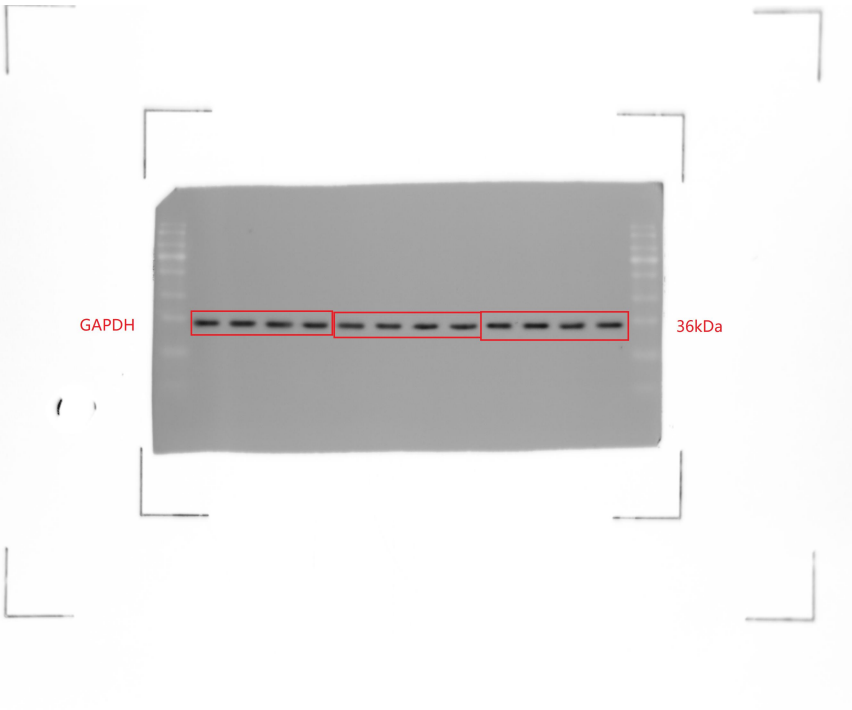


Figure 6

The original blot of NF- κ B in LC cells

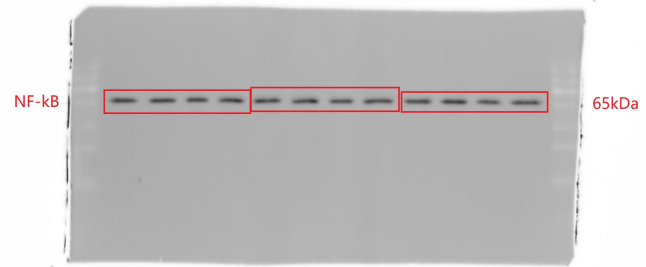


Figure 6
The original blot of p-NF-kB in LC cells

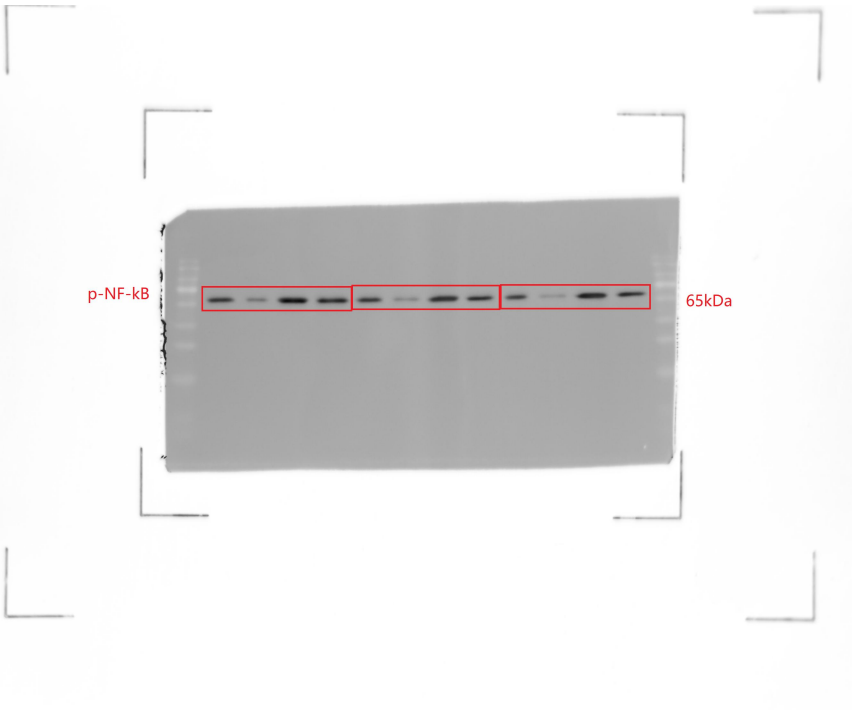


Figure 6

The original blot of Stat3 in LC cells

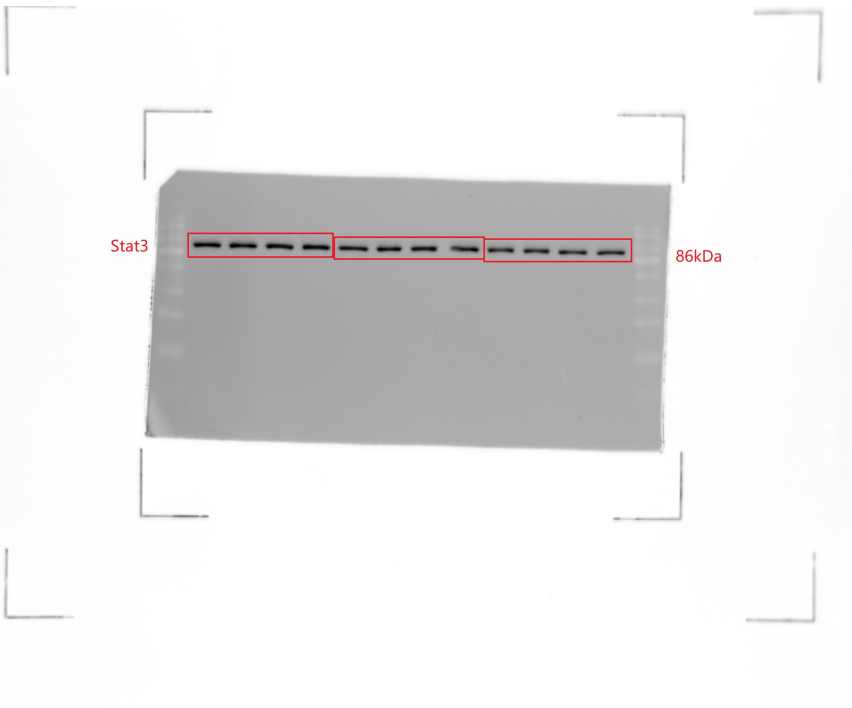


Figure 6
The original blot of p-Stat3 in LC cells

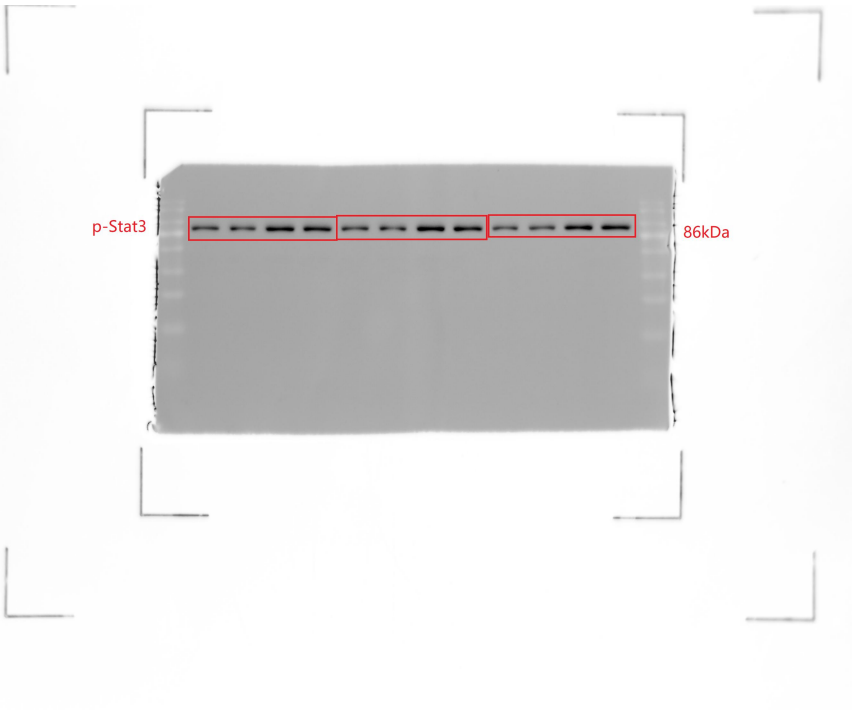


Figure 6
The original blot of MAPK in LC cells

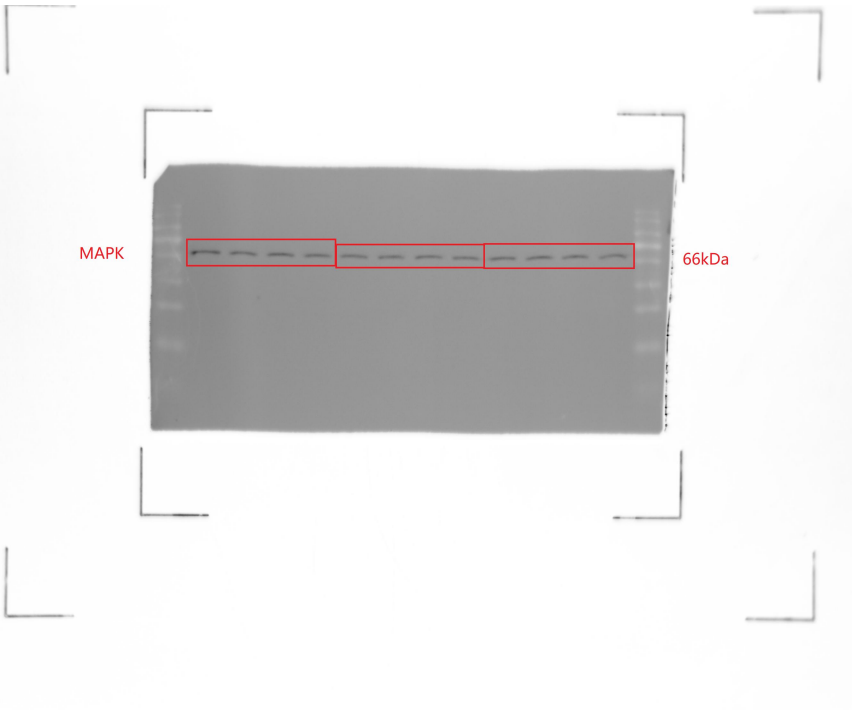


Figure 6
The original blot of p-MAPK in LC cells

