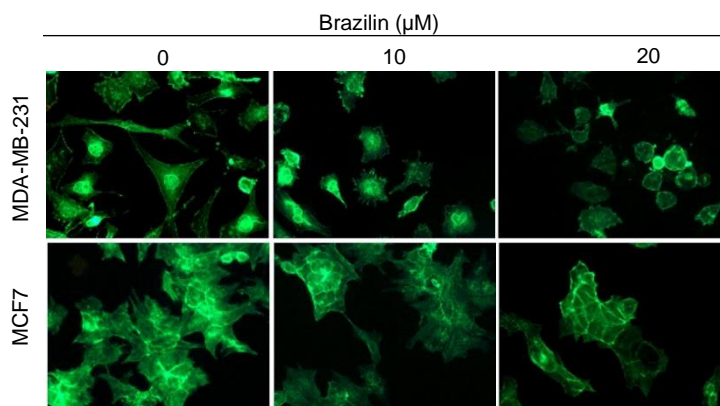


**Figure 1. Brazilin induces morphological changes in MDA-MB-231, and MCF7 cells.**

**A)** Brazilin 10, 20, and 40  $\mu\text{M}$  for 24 h induced morphological changes of MDA-MB-231 and MCF7 cells.



**Figure 1. Brazilin induces morphological changes in MDA-MB-231, and MCF7 cells.**

**C)** Brazilin at 20 and 40  $\mu\text{M}$  induces changes in actin polymerization in MDA-MB-231 and MCF7 cells.