

Figure 2. Brazilin regulates E-cadherin, vimentin, and Twist protein levels in MDA-MB-231 cells. Cells were treated with brazilin 0-40 μ M for 24 h. A) Representative Western blot of E-cadherin (B), vimentin (C), and Twist (D) levels.

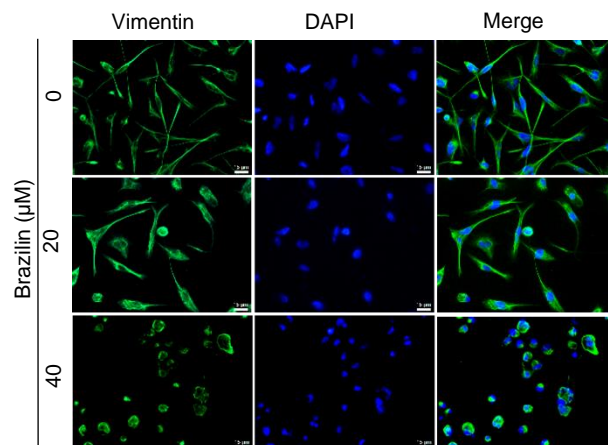


Figure 2. Brazilin regulates E-cadherin, vimentin, and Twist protein levels in MDA-MB-231 cells. Representative images of vimentin (E) by immunofluorescence assays, blue shows nuclei staining. Images were obtained at 40X objective.

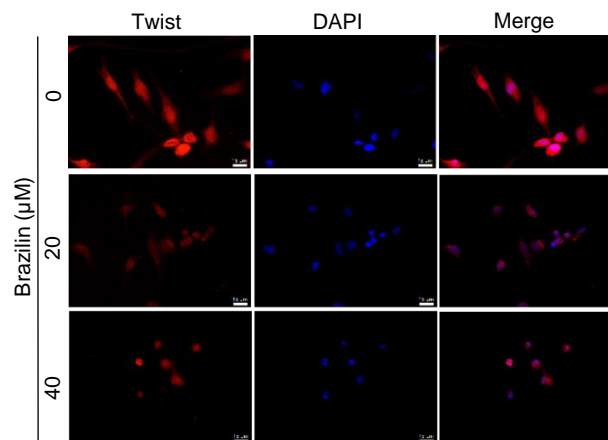


Figure 2. Brazilin regulates E-cadherin, vimentin, and Twist protein levels in MDA-MB-231 cells. Representative images of Twist (F) by immunofluorescence assays, blue shows nuclei staining. Images were obtained at 40X objective