

Figure 4. Brazilin decreases MMP-2 and MMP-9 secretion and invasion of MDA-MB-231 cells. A) Zymography assays of MDA-MB-231 cells treated with brazilin 0, 2.5, 5, 10, 10, 20, and 40 μM for 24 h, corresponding to MMP-9 (92 kDa) and MMP-2 (72 kDa) degradation bands.

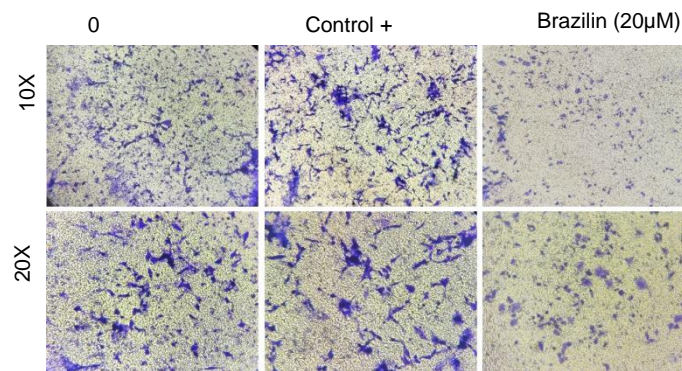


Figure 4. Brazilin decreases MMP-2 and MMP-9 secretion and invasion of MDA-MB-231 cells. D) Representative brightfield microscopy images of invasion assays of MDA-MB-231 cells treated with 0, the positive control (medium supplemented with 1% SFB, and brazilin 20 mM for 24 h.

