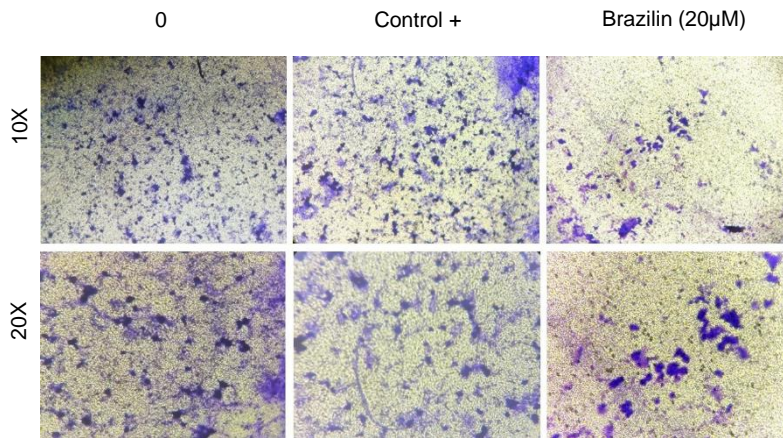


**Figure 5. Brazilin decreases MMP-2 and MMP-9 secretion and invasion of MCF7 cells.**

A) Zymography assays of MCF7 cells treated with brazilin 0, 2.5, 5, 10, 20, and 40  $\mu\text{M}$  for 24 h, corresponding to degradation bands of MMP-9 (92 kDa) and MMP-2 (72 kDa).



**Figure 5. Brazilin decreases MMP-2 and MMP-9 secretion and invasion of MCF7 cells.**

D) Representative brightfield microscopy images of invasion assays of MCF7 cells, the positive control (medium supplemented with 1% SFB), and 20  $\mu\text{M}$  brazilin for 24 h.