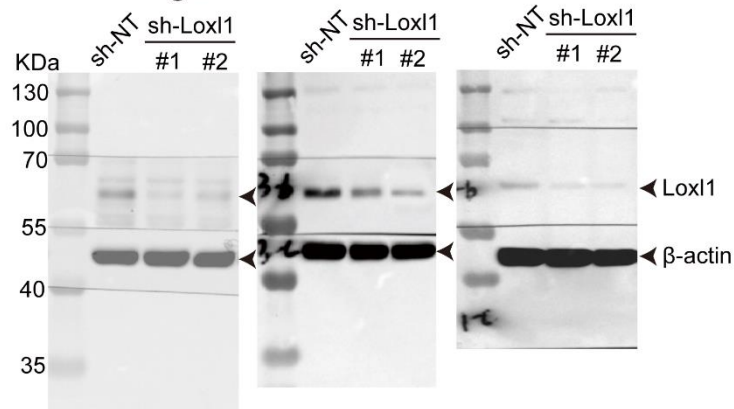


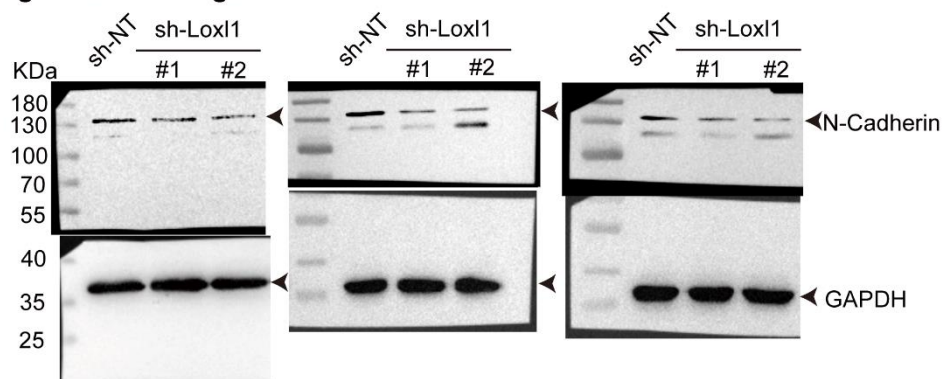
**Original blots and images:**

**Original blots** (A) Western blots of knockdown-Loxl1. N = 3. (B) Western blots of N-cadherin and (C) E-cadherin under the intervention of Loxl1. N = 3. (D) Western blots of Vimentin and (E) Snail under the intervention of Loxl1. N = 3. The specific bands were pointed by arrows.

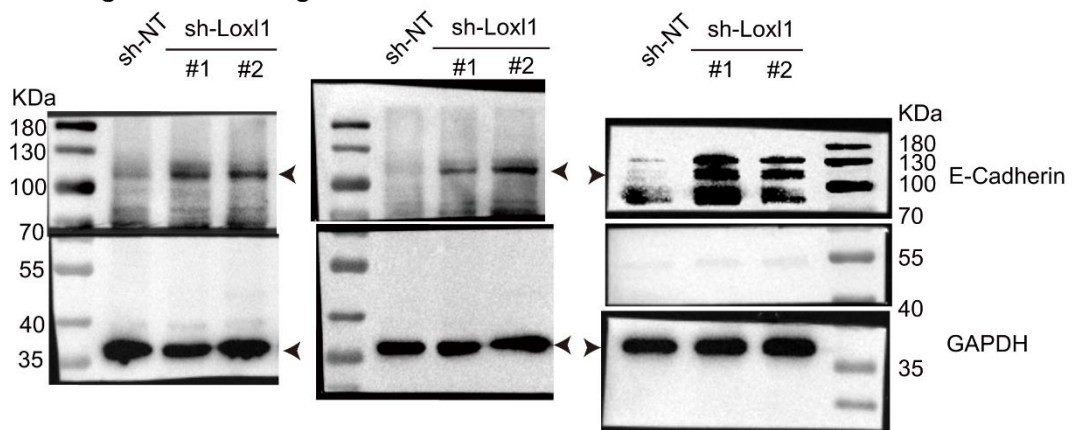
**A. Original blots of Figure 7A**



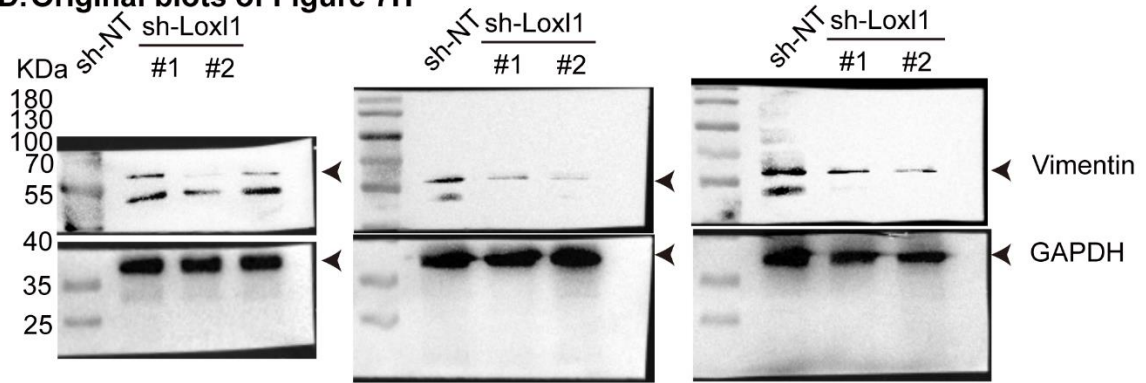
**B. Original blots of Figure 7C**



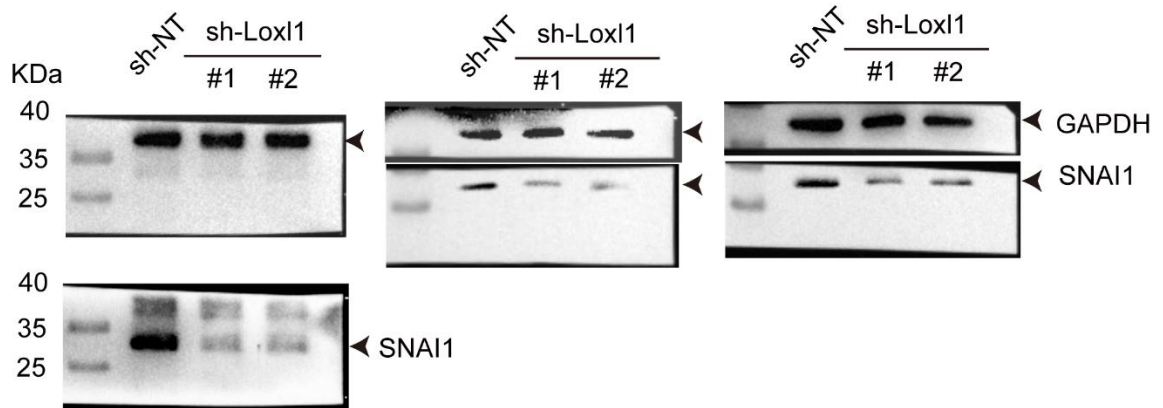
**C. Original blots of Figure 7E**



**D. Original blots of Figure 7H**



**E. Original blots of Figure 7J**

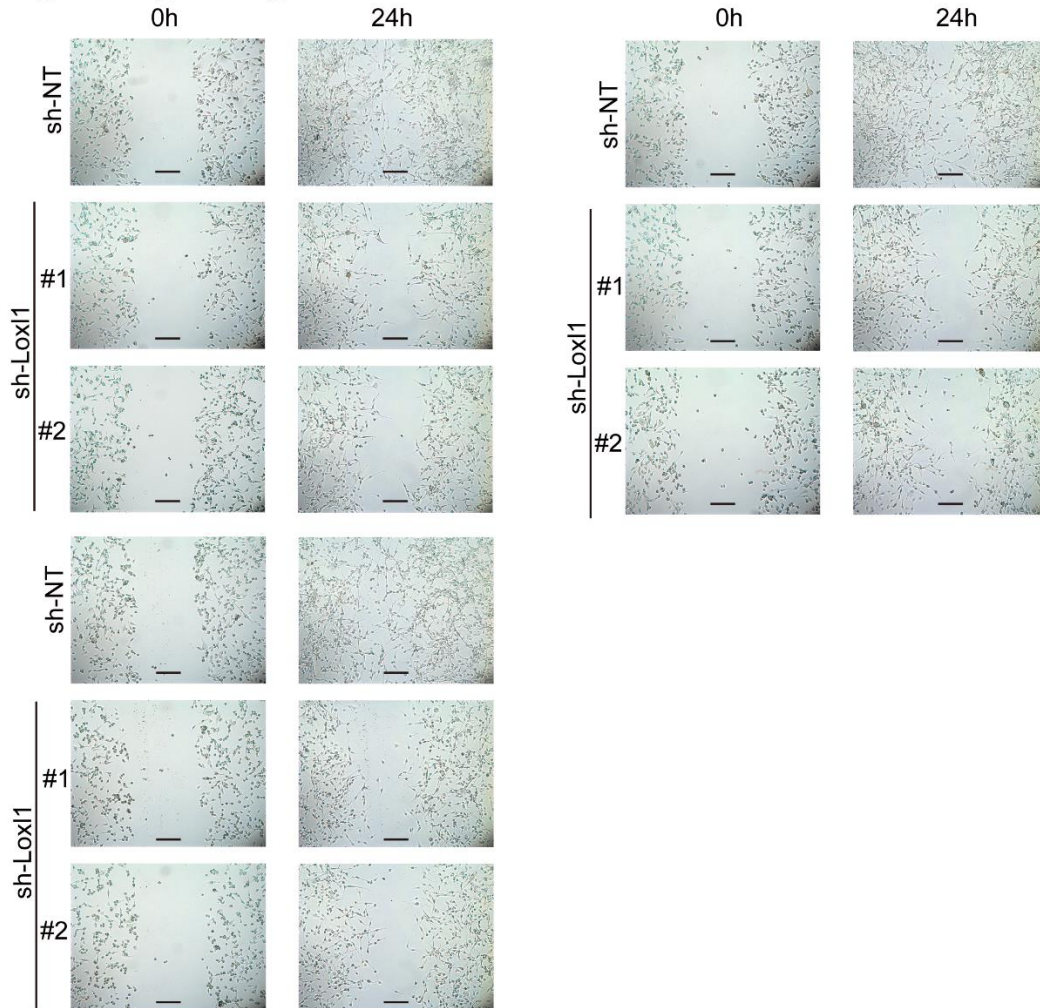


**Original images (A)** The wound healing assay of Loxl1-knockdown glioma cells compared to the control.

The gap was measured at 0 h and 24 h after the scratch. The black scale bar was 200  $\mu$ m. N = 3. **(B)**

Transwell invasion assay of Loxl1-knockdown glioma cells. The white scale bar represented 200  $\mu$ m. N = 3.

**A. Original images of Figure 7G**



**B. Original images of Figure 7I**

