



Product Name	[Product Name]
Part Name	[Part Name]
Part Number	[Part Number]
Department	[Department]
Inspector	[Inspector]
Date	Jul 20, 2023
Unit	mm

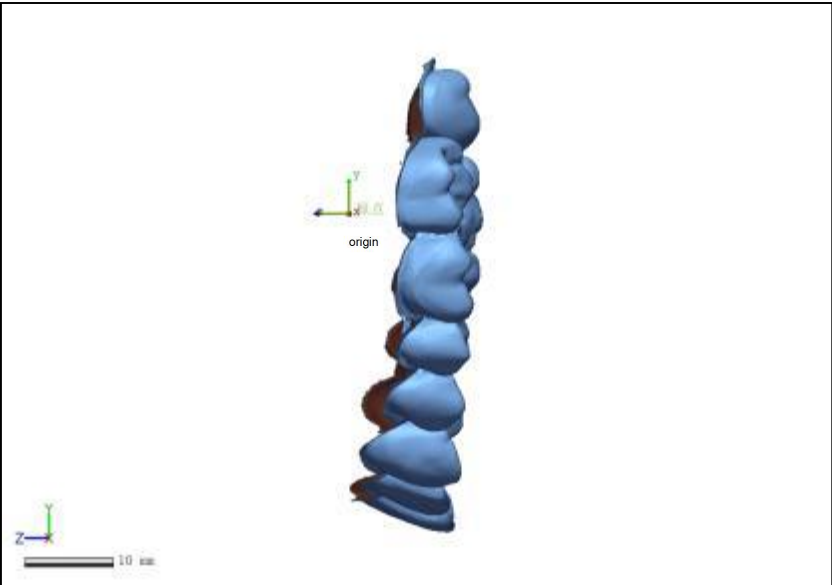
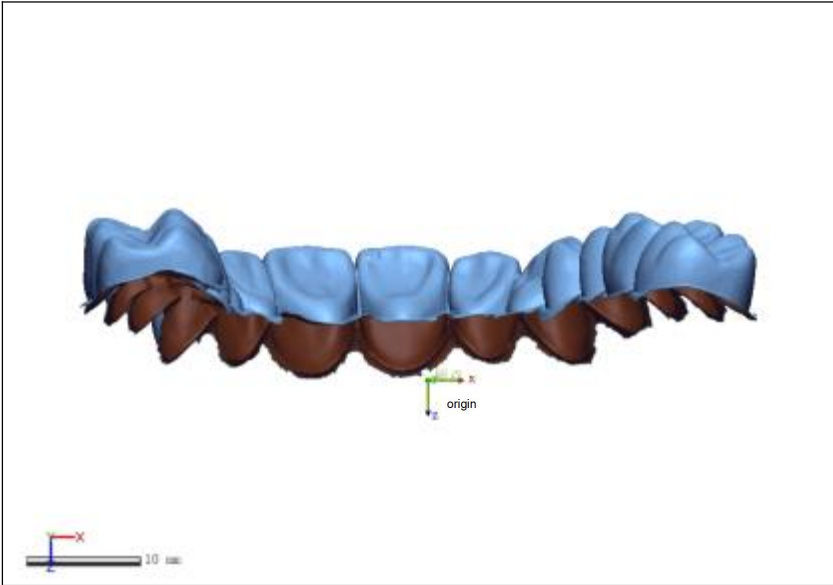
Disclaimer

The results of this analysis and forecastings are believed to be reliable but are not to be construed as providing a warranty, including any warranty of merchantability or fitness for purpose, or representation for which 3D Systems, Inc. assumes legal responsibility. Users should undertake sufficient verification and iterative testing to determine the suitability of any information presented.

Nothing herein is to be taken as permission, inducement or recommendation by 3D Systems, Inc. to practice any patented invention without a license or to in any way infringe upon the intellectual property rights of any other party.

结果数据 - 1 : 参考数据 - 初始

Results data-1:Reference data-Initial



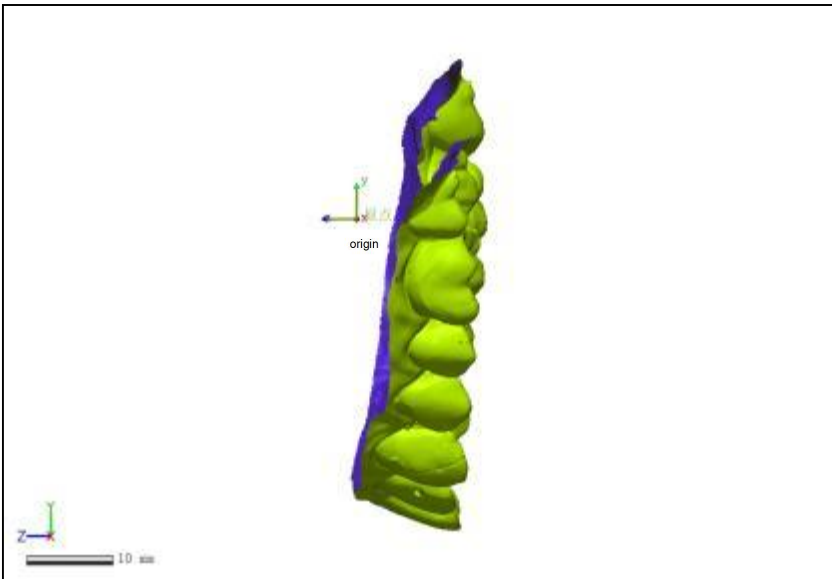
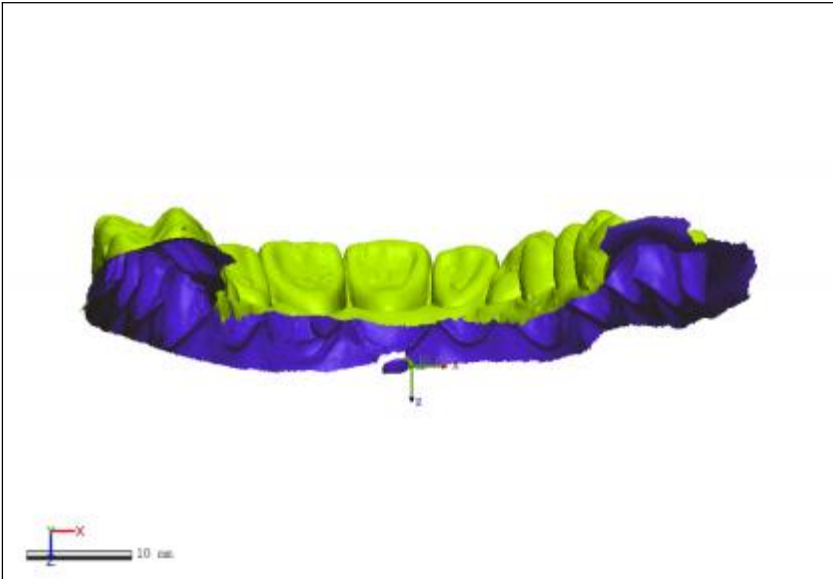
Product Name	[Product Name]
Part Name	[Part Name]

Department	[Department]
Inspector	[Inspector]

Date	Jul 20, 2023
Unit	mm

结果数据 - 1 : 测试数据 - 氯喷5

Results data-1:Test Data-Effective chlorine spray5



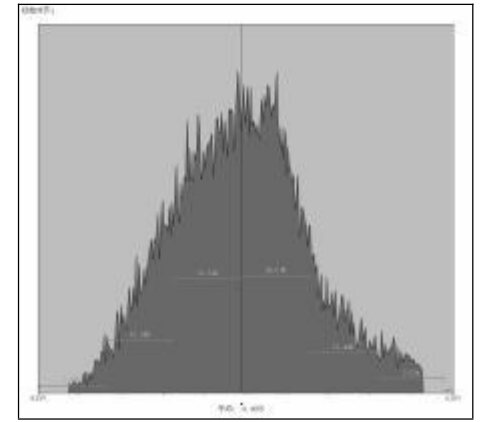
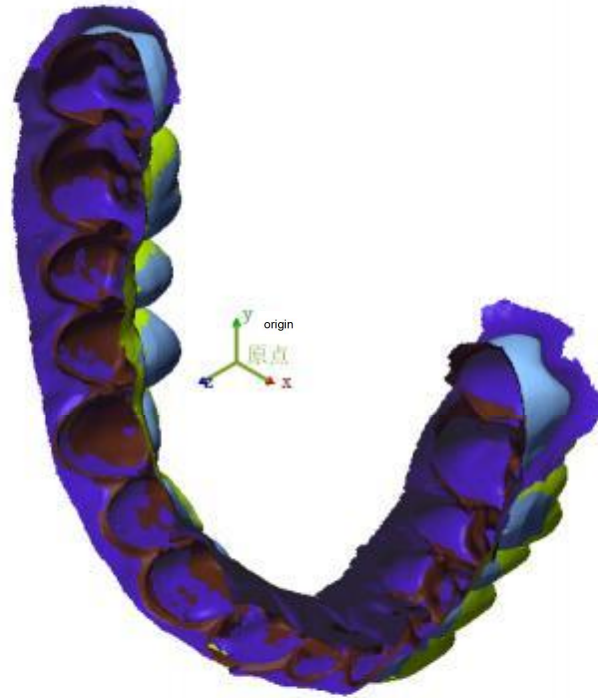
Product Name	[Product Name]
Part Name	[Part Name]

Department	[Department]
Inspector	[Inspector]

Date	Jul 20, 2023
Unit	mm

结果数据 - 1 : 初始对齐1

Results data-1:Initial alignment1



Minimum	-0.2006
Maximum	0.2012
Average	-0.0055
RMS	0.0774
Standard deviation	0.0772
Dispersion	0.006
+Average	0.0606
-Average	-0.0635

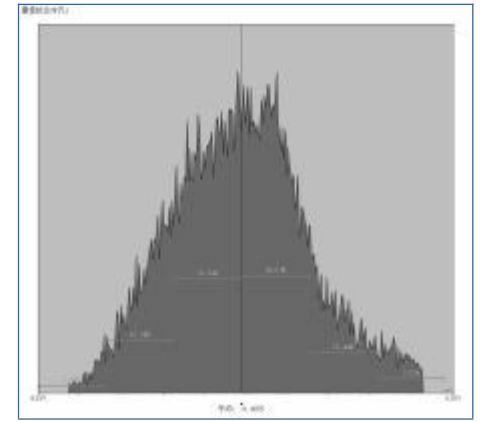
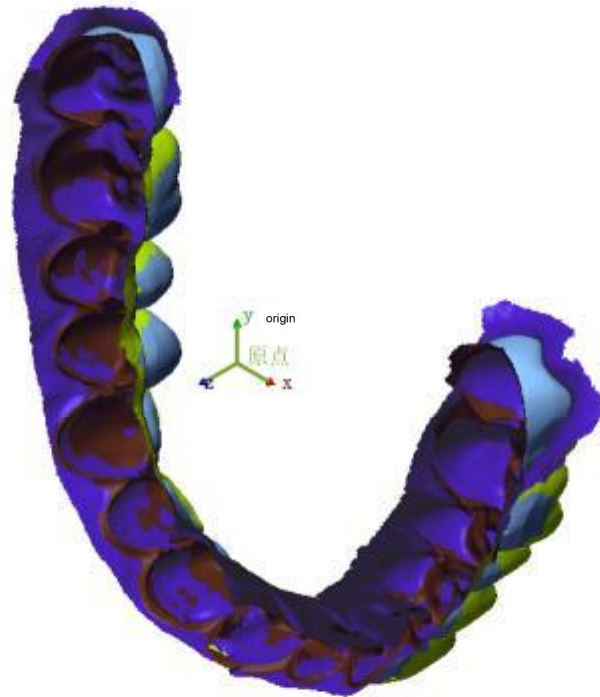
Product Name	[Product Name]
Part Name	[Part Name]

Department	[Department]
Inspector	[Inspector]

Date	Jul 20, 2023
Unit	mm

结果数据 - 1 : 最佳拟合对齐1

Results data-1:Best-fit alignment1



Minimum	-0.2006
Maximum	0.2012
Average	-0.0055
RMS	0.0774
Standard deviation	0.0772
Dispersion	0.006
+Average	0.0606
-Average	-0.0635

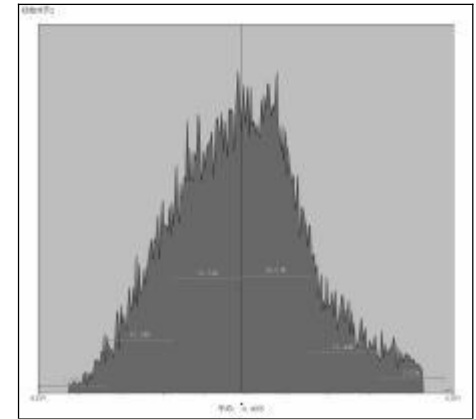
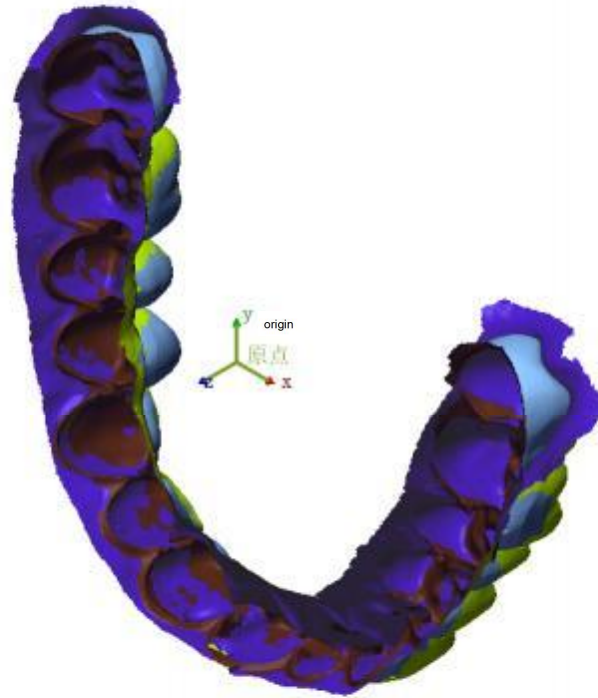
Product Name	[Product Name]
Part Name	[Part Name]

Department	[Department]
Inspector	[Inspector]

Date	Jul 20, 2023
Unit	mm

结果数据 - 1 : 初始对齐2

Results data-1:Initial alignment2



Minimum	-0.2006
Maximum	0.2012
Average	-0.0055
RMS	0.0774
Standard deviation	0.0772
Dispersion	0.006
+Average	0.0606
-Average	-0.0635

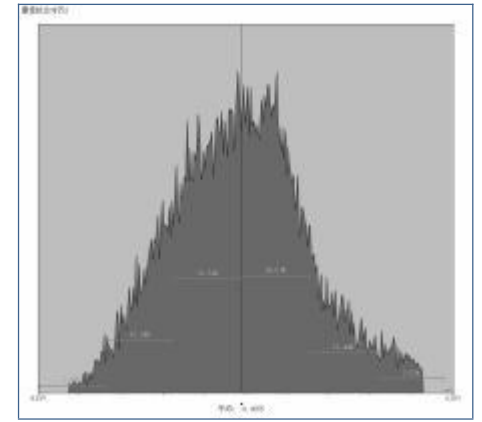
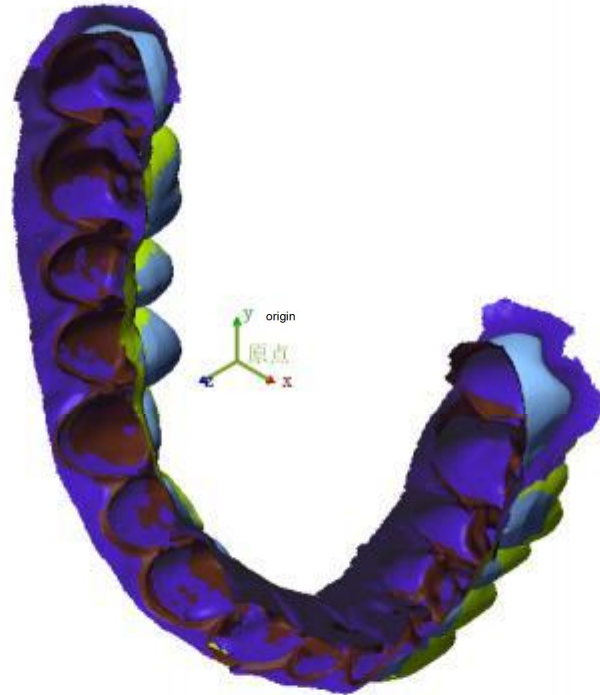
Product Name	[Product Name]
Part Name	[Part Name]

Department	[Department]
Inspector	[Inspector]

Date	Jul 20, 2023
Unit	mm

结果数据 - 1 : 最佳拟合对齐2

Results data-1:Best-fit alignment2



Minimum	-0.2006
Maximum	0.2012
Average	-0.0055
RMS	0.0774
Standard deviation	0.0772
Dispersion	0.006
+Average	0.0606
-Average	-0.0635

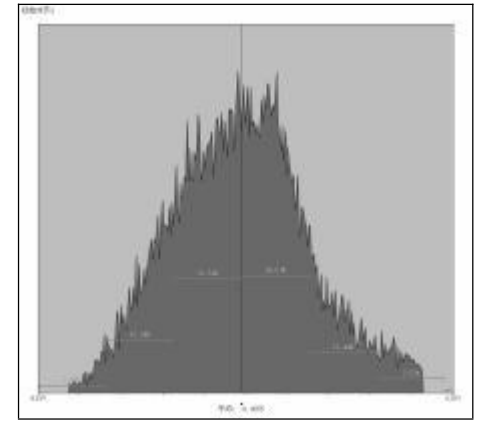
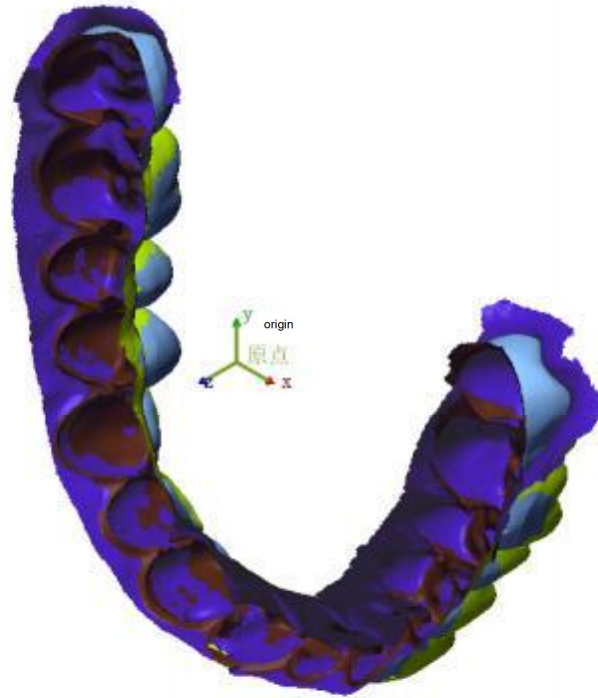
Product Name	[Product Name]
Part Name	[Part Name]

Department	[Department]
Inspector	[Inspector]

Date	Jul 20, 2023
Unit	mm

结果数据 - 1 : 初始对齐3

Results data-1:Initial alignment3



Minimum	-0.2006
Maximum	0.2012
Average	-0.0055
RMS	0.0774
Standard deviation	0.0772
Dispersion	0.006
+Average	0.0606
-Average	-0.0635

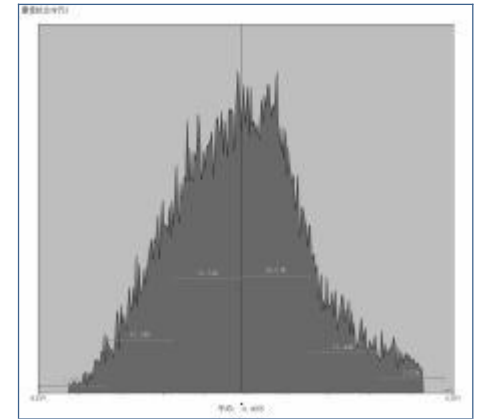
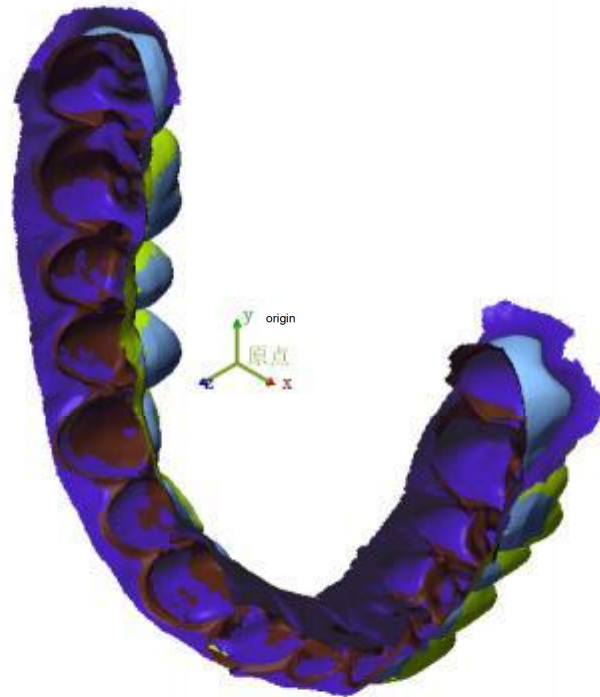
Product Name	[Product Name]
Part Name	[Part Name]

Department	[Department]
Inspector	[Inspector]

Date	Jul 20, 2023
Unit	mm

结果数据 - 1 : 最佳拟合对齐3

Results data-1:Best-fit alignment3



Minimum	-0.2006
Maximum	0.2012
Average	-0.0055
RMS	0.0774
Standard deviation	0.0772
Dispersion	0.006
+Average	0.0606
-Average	-0.0635

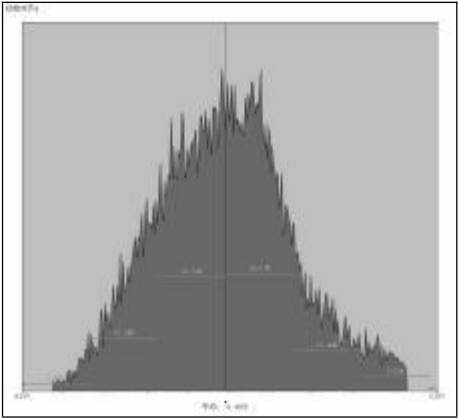
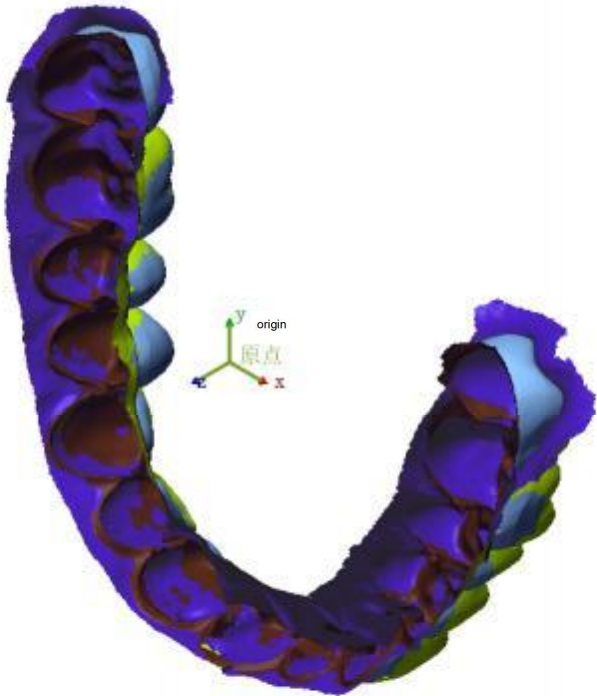
Product Name	[Product Name]
Part Name	[Part Name]

Department	[Department]
Inspector	[Inspector]

Date	Jul 20, 2023
Unit	mm

结果数据 - 1 : 初始对齐4

Results data-1:Initial alignment4



Minimum	-0.2006
Maximum	0.2012
Average	-0.0055
RMS	0.0774
Standard deviation	0.0772
Dispersion	0.006
+Average	0.0606
-Average	-0.0635

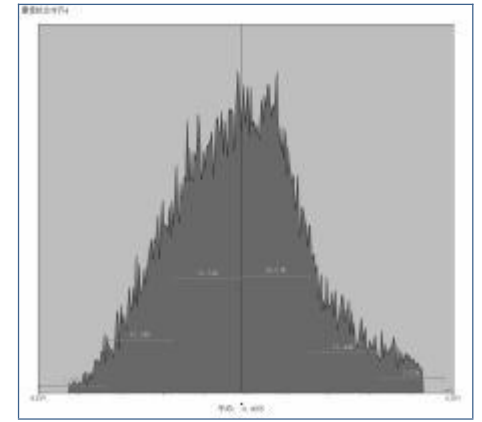
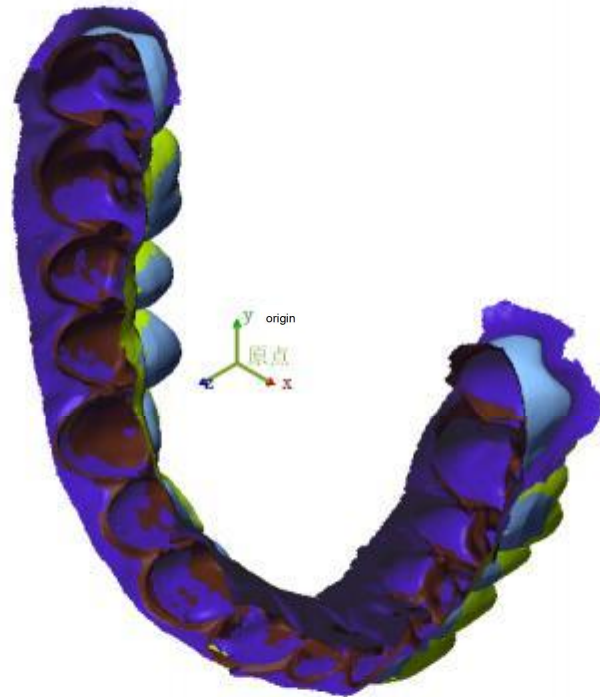
Product Name	[Product Name]
Part Name	[Part Name]

Department	[Department]
Inspector	[Inspector]

Date	Jul 20, 2023
Unit	mm

结果数据 - 1 : 最佳拟合对齐4

Results data-1:Best-fit alignment4



Minimum	-0.2006
Maximum	0.2012
Average	-0.0055
RMS	0.0774
Standard deviation	0.0772
Dispersion	0.006
+Average	0.0606
-Average	-0.0635

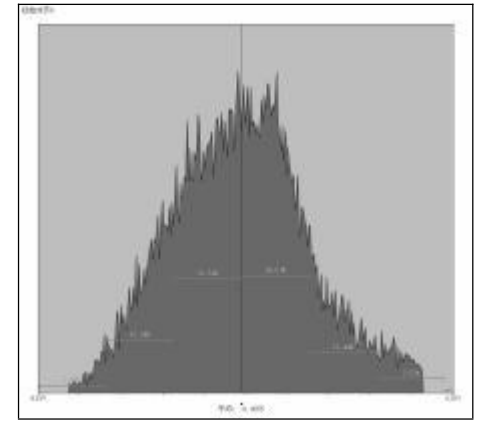
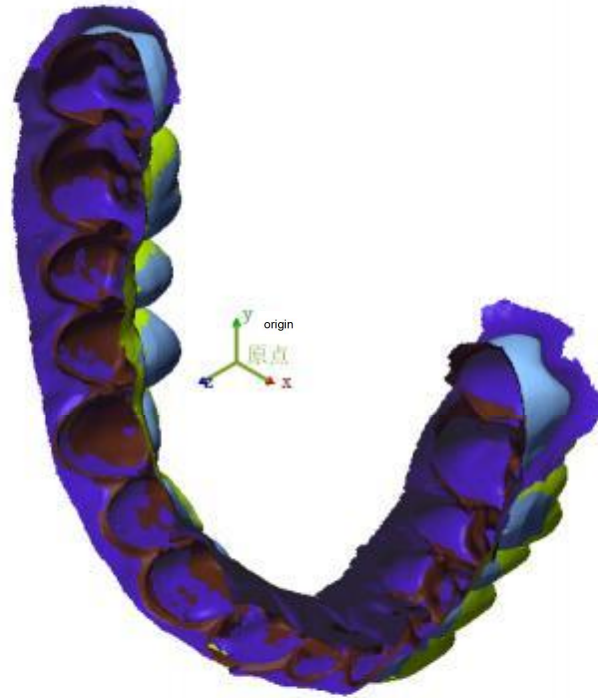
Product Name	[Product Name]
Part Name	[Part Name]

Department	[Department]
Inspector	[Inspector]

Date	Jul 20, 2023
Unit	mm

结果数据 - 1 : 初始对齐5

Results data-1:Initial alignment5



Minimum	-0.2006
Maximum	0.2012
Average	-0.0055
RMS	0.0774
Standard deviation	0.0772
Dispersion	0.006
+Average	0.0606
-Average	-0.0635

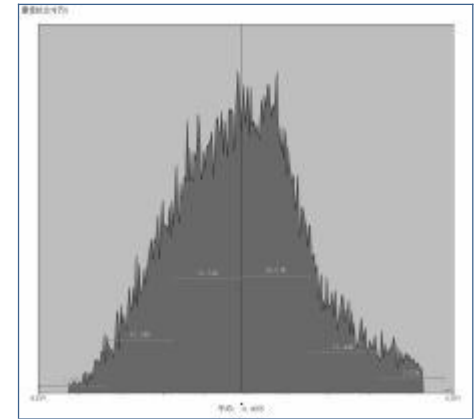
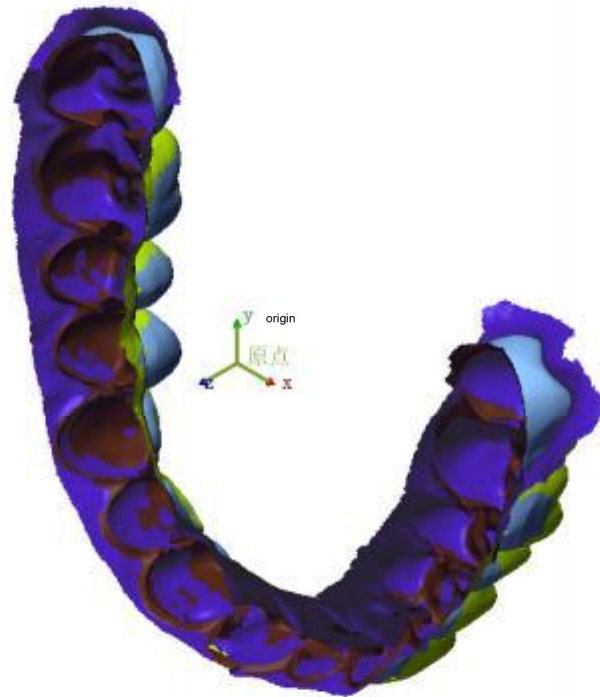
Product Name	[Product Name]
Part Name	[Part Name]

Department	[Department]
Inspector	[Inspector]

Date	Jul 20, 2023
Unit	mm

结果数据 - 1 : 最佳拟合对齐5

Results data-1:Best-fit alignment5



Minimum	-0.2006
Maximum	0.2012
Average	-0.0055
RMS	0.0774
Standard deviation	0.0772
Dispersion	0.006
+Average	0.0606
-Average	-0.0635

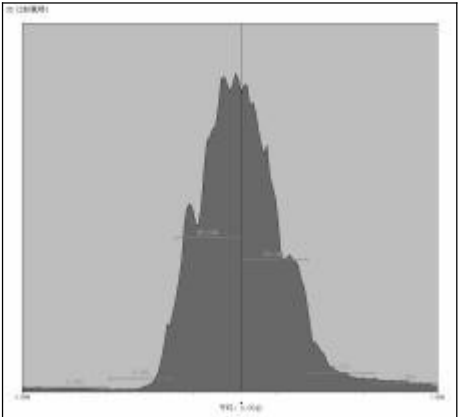
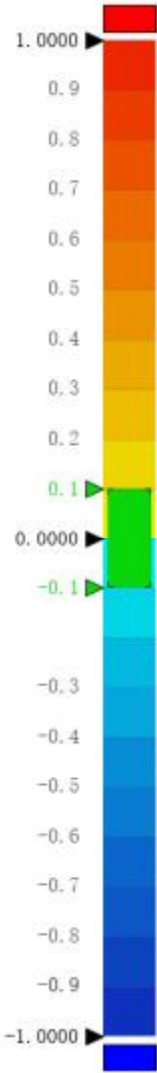
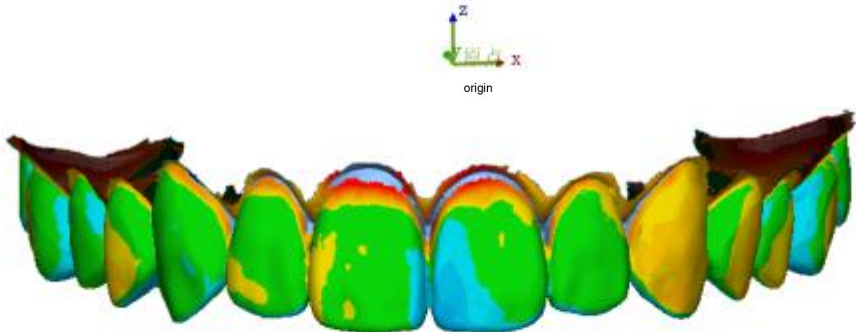
Product Name	[Product Name]
Part Name	[Part Name]

Department	[Department]
Inspector	[Inspector]

Date	Jul 20, 2023
Unit	mm

结果数据 - 1 : 3D 比较氯喷1

Results data-1:3D compare Effective chlorine spray1



Minimum	-2.0032
Maximum	2.0033
Average	0.0542
RMS	0.3695
Standard deviation	0.3655
Dispersion	0.1336
+Average	0.2553
-Average	-0.2133
Within Tolerance(%)	32.9284
Out Of Tolerance(%)	67.0716
Above Tolerance(%)	40.2889
Below Tolerance(%)	26.7827

Product Name	[Product Name]
Part Name	[Part Name]

Department	[Department]
Inspector	[Inspector]

Date	Jul 20, 2023
------	--------------

Unit	mm
------	----

Name	Minimum	Maximum	Average	RMS	Standard deviation	Dispersion	+Average	-Average
3D compare Effective chlorine spray1	-2.0032	2.0033	0.0542	0.3695	0.3655	0.1336	0.2553	-0.2133

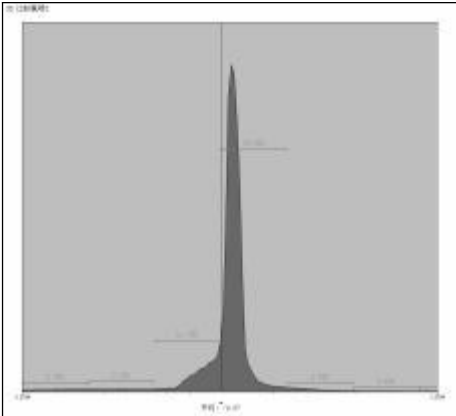
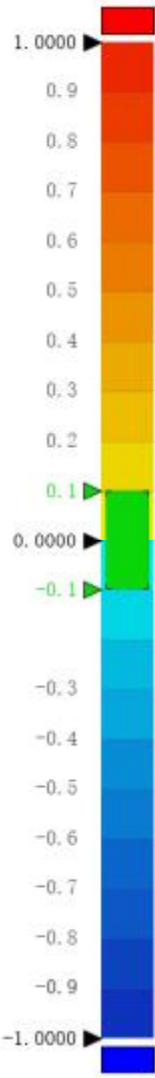
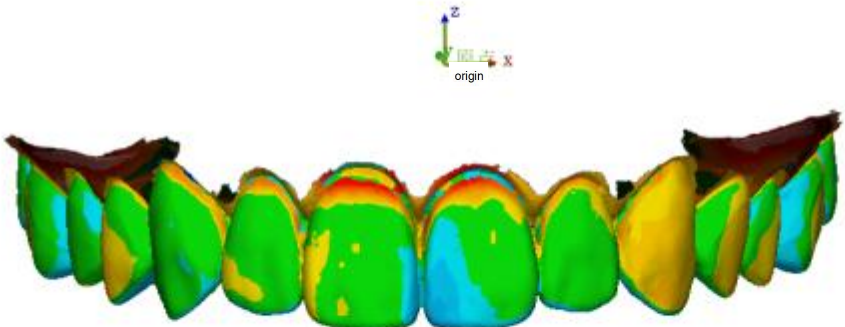
Product Name	[Product Name]
Part Name	[Part Name]

Department	[Department]
Inspector	[Inspector]

Date	Jul 18, 2023
Unit	mm

结果数据 - 1 : 3D 比较氯喷2

Results data-1:3D compare Effective chlorine spray2



Minimum	-2.3469
Maximum	2.3449
Average	-0.07
RMS	0.4421
Standard deviation	0.4365
Dispersion	0.1905
+Average	0.1351
-Average	-0.2383
Within Tolerance(%)	71.4055
Out Of Tolerance(%)	28.5945
Above Tolerance(%)	9.1144
Below Tolerance(%)	19.4801

Product Name	[Product Name]
Part Name	[Part Name]

Department	[Department]
Inspector	[Inspector]

Date	Jul 20, 2023
Unit	mm

Name	Minimum	Maximum	Average	RMS	Standard deviation	Dispersion	+Average	-Average
3D compare Effective chlorine spray2	-2.3469	2.3449	-0.07	0.4421	0.4365	0.1905	0.1351	-0.2383

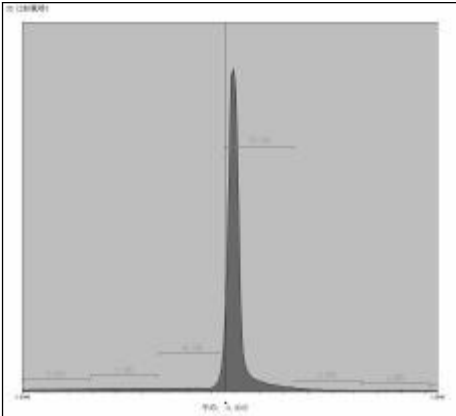
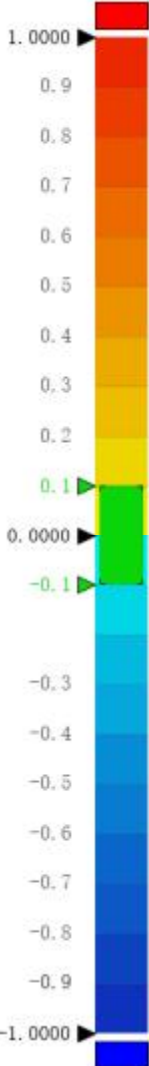
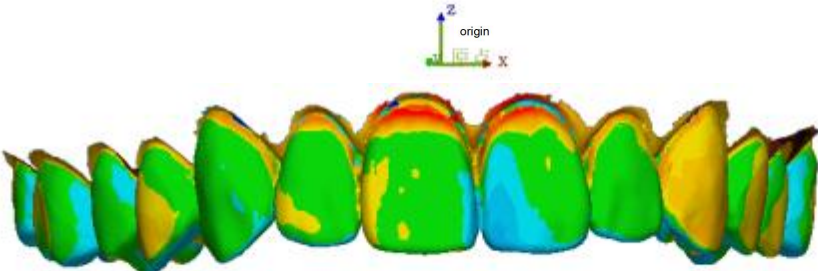
Product Name	[Product Name]
Part Name	[Part Name]

Department	[Department]
Inspector	[Inspector]

Date	Jul 18, 2023
Unit	mm

结果数据 - 1 : 3D 比较氯喷3

Results data-1:3D compare Effective chlorine spray3



Minimum	-2.8981
Maximum	2.898
Average	-0.0505
RMS	0.65
Standard deviation	0.648
Dispersion	0.42
+Average	0.2229
-Average	-0.3957
Within Tolerance(%)	69.6575
Out Of Tolerance(%)	30.3425
Above Tolerance(%)	15.5967
Below Tolerance(%)	14.7459

Product Name	[Product Name]
Part Name	[Part Name]

Department	[Department]
Inspector	[Inspector]

Date	Jul 20, 2023
Unit	mm

Name	Minimum	Maximum	Average	RMS	Standard deviation	Dispersion	+Average	-Average
3D compare Effective chlorine spray3	-2.8981	2.898	-0.0505	0.65	0.648	0.42	0.2229	-0.3957

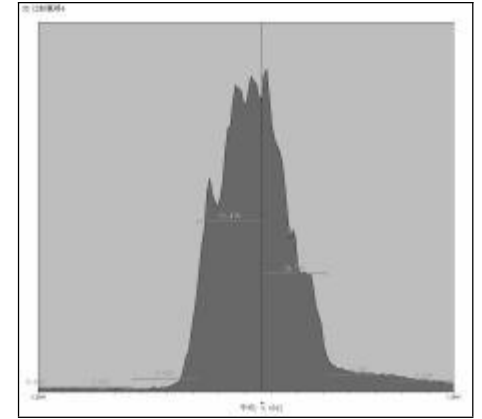
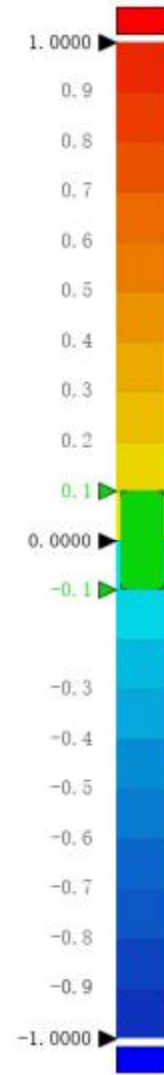
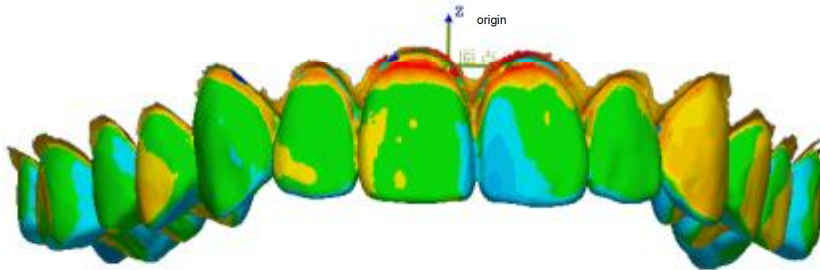
Product Name	[Product Name]
Part Name	[Part Name]

Department	[Department]
Inspector	[Inspector]

Date	Jul 18, 2023
Unit	mm

结果数据 - 1 : 3D 比较氯喷4

Results data-1:3D compare Effective chlorine spray4



Minimum	-2.0369
Maximum	2.0368
Average	0.0912
RMS	0.4079
Standard deviation	0.3976
Dispersion	0.1581
+Average	0.2994
-Average	-0.2004
Within Tolerance(%)	31.3173
Out Of Tolerance(%)	68.6827
Above Tolerance(%)	42.4652
Below Tolerance(%)	26.2175

Product Name	[Product Name]
Part Name	[Part Name]

Department	[Department]
Inspector	[Inspector]

Date	Jul 20, 2023
Unit	mm

Name	Minimum	Maximum	Average	RMS	Standard deviation	Dispersion	+Average	-Average
3D compare Effective chlorine spray4	-2.0369	2.0368	0.0912	0.4079	0.3976	0.1581	0.2994	-0.2004

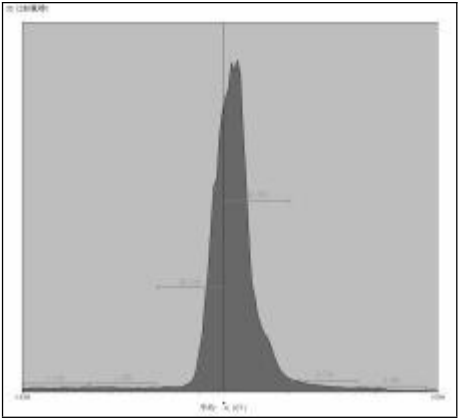
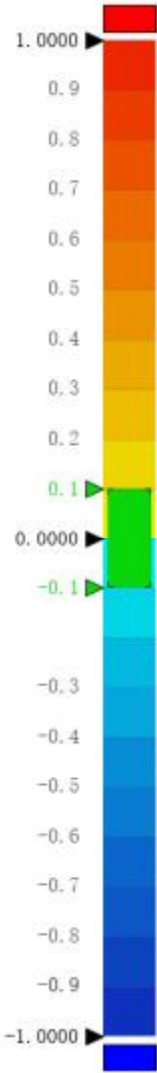
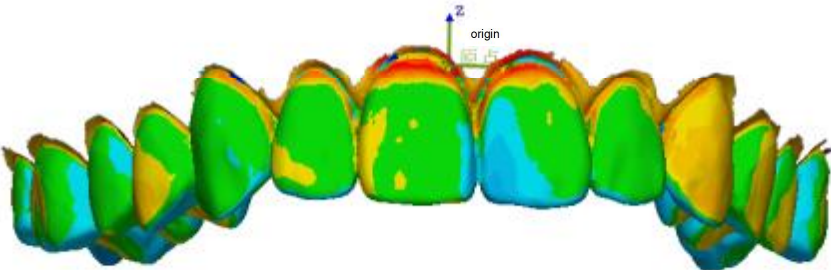
Product Name	[Product Name]
Part Name	[Part Name]

Department	[Department]
Inspector	[Inspector]

Date	Jul 18, 2023
Unit	mm

结果数据 - 1 : 3D 比较氯喷5

Results data-1:3D compare Effective chlorine spray5



Minimum	-1.8613
Maximum	1.861
Average	-0.0371
RMS	0.335
Standard deviation	0.3329
Dispersion	0.1108
+Average	0.1294
-Average	-0.1866
Within Tolerance.(%)	66.9682
Out Of Tolerance(%)	33.0318
Above Tolerance(%)	15.4924
Below Tolerance(%)	17.5394

Product Name	[Product Name]
Part Name	[Part Name]

Department	[Department]
Inspector	[Inspector]

Date	Jul 20, 2023
Unit	mm

Name	Minimum	Maximum	Average	RMS	Standard deviation	Dispersion	+Average	-Average
3D compare Effective chlorine spray5	-1.8613	1.861	-0.0371	0.335	0.3329	0.1108	0.1294	-0.1866

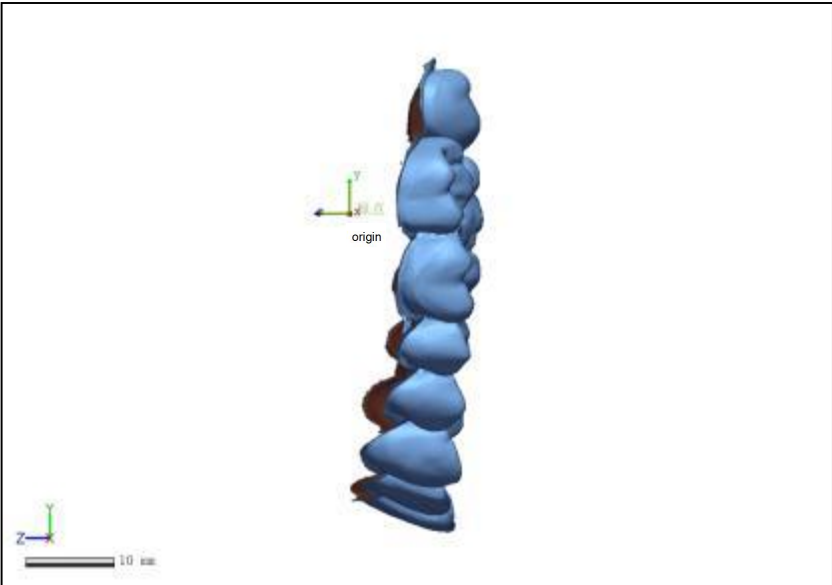
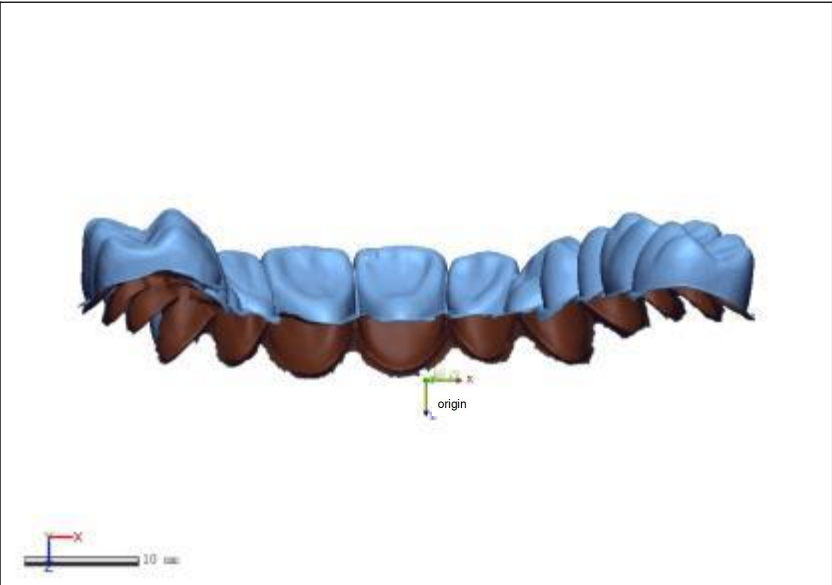
Product Name	[Product Name]
Part Name	[Part Name]

Department	[Department]
Inspector	[Inspector]

Date	Jul 18, 2023
Unit	mm

结果数据 - 1 : 参考数据 - 初始

Results data-1:Reference data-Initial



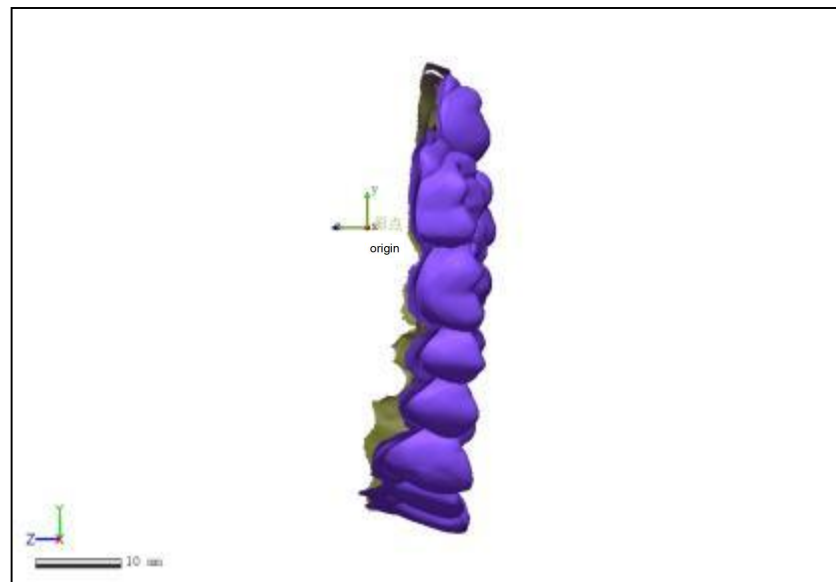
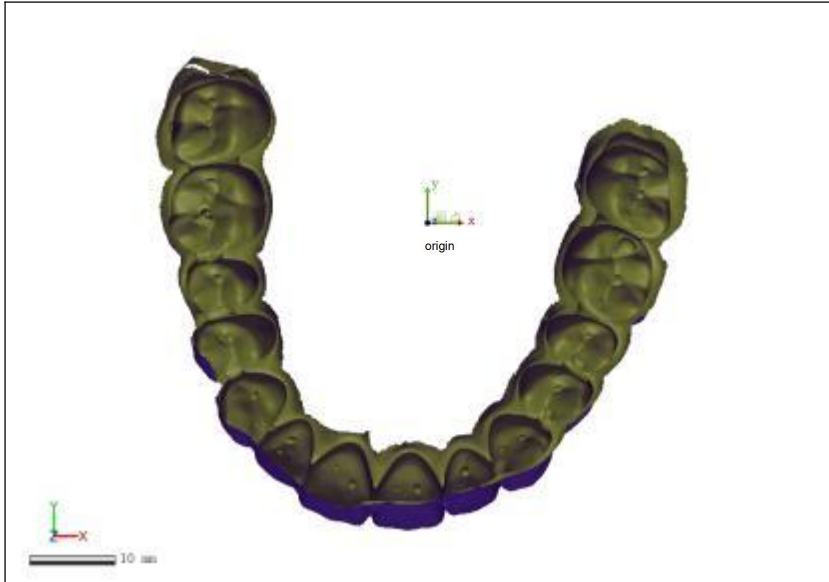
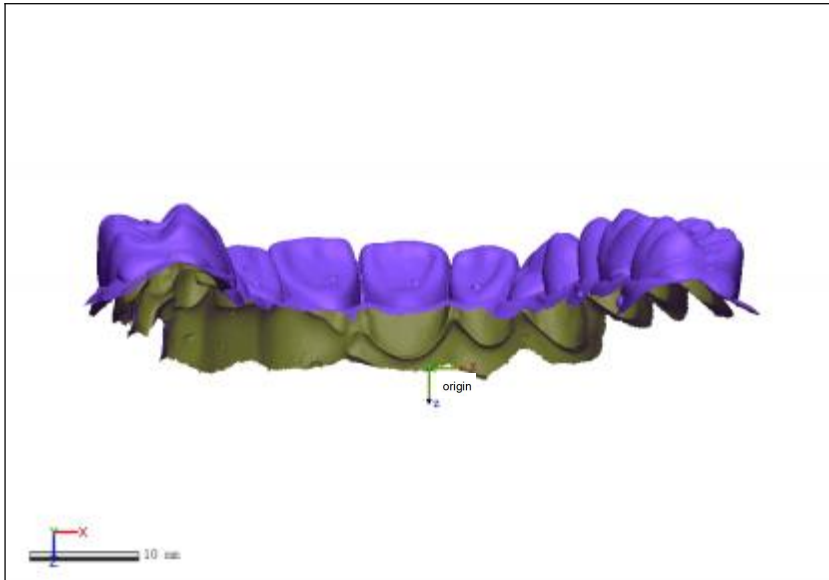
Product Name	[Product Name]
Part Name	[Part Name]

Department	[Department]
Inspector	[Inspector]

Date	Jul 25, 2023
Unit	mm

v结果数据 - 1 : 测试数据 - 氯10

Results data-1: Test Data-Effective Chlorine10



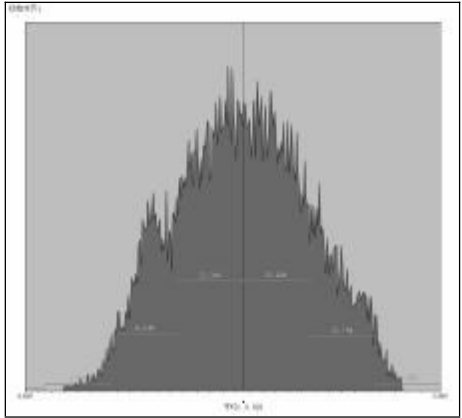
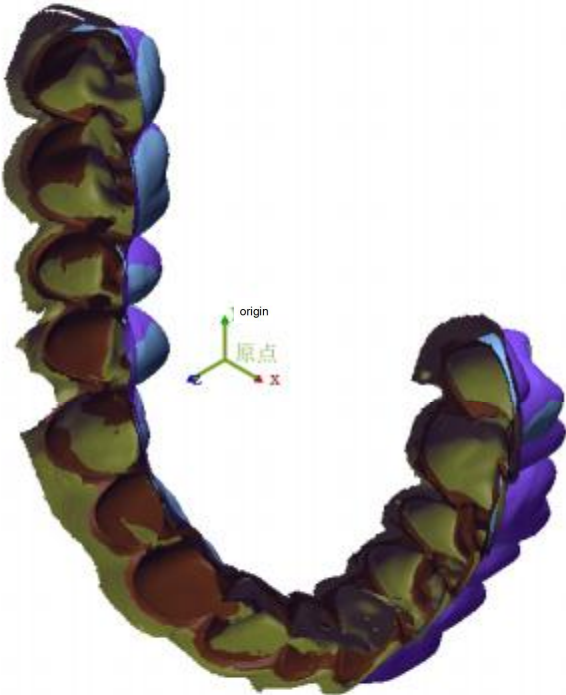
Product Name	[Product Name]
Part Name	[Part Name]

Department	[Department]
Inspector	[Inspector]

Date	Jul 25, 2023
Unit	mm

结果数据 - 1 : 初始对齐1

Results data-1:Initial alignment1



Minimum	-0.4837
Maximum	0.4857
Average	0.028
RMS	0.1923
Standard deviation	0.1902
Dispersion	0.0362
+Average	0.1687
-Average	-0.1452

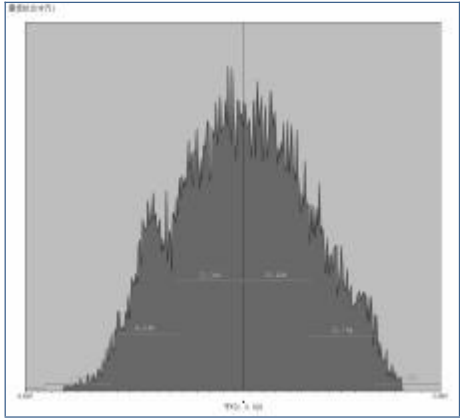
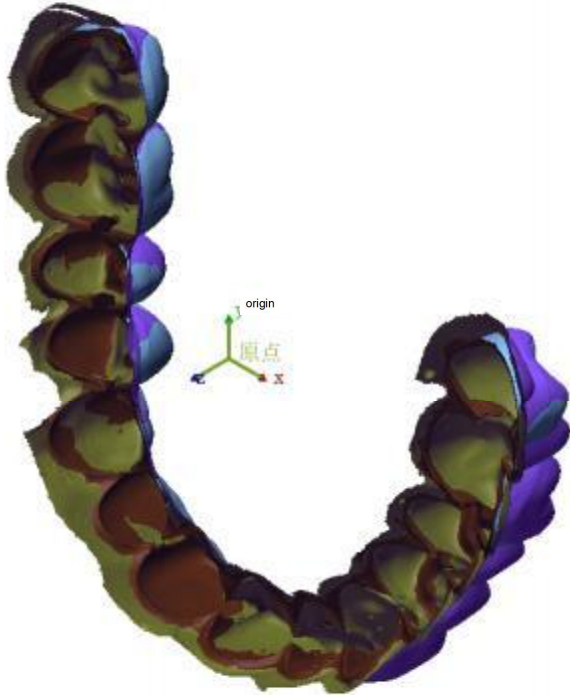
Product Name	[Product Name]
Part Name	[Part Name]

Department	[Department]
Inspector	[Inspector]

Date	Jul 25, 2023
Unit	mm

结果数据 - 1 : 最佳拟合对齐1

Results data-1:Best-fit alignment1



Minimum	-0.4837
Maximum	0.4857
Average	0.028
RMS	0.1923
Standard deviation	0.1902
Dispersion	0.0362
+Average	0.1687
-Average	-0.1452

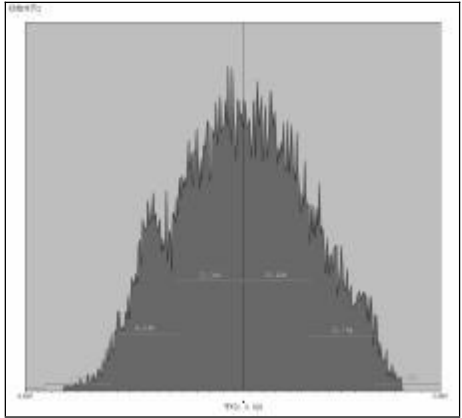
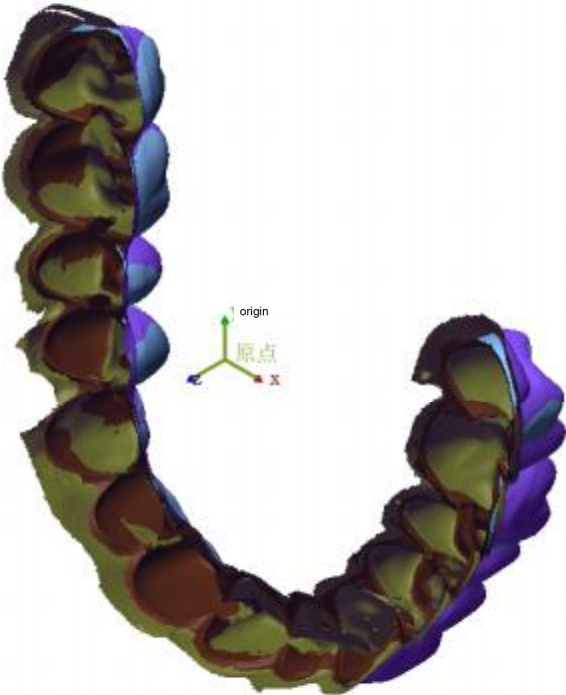
Product Name	[Product Name]
Part Name	[Part Name]

Department	[Department]
Inspector	[Inspector]

Date	Jul 25, 2023
Unit	mm

结果数据 - 1 : 初始对齐2

Results data-1:Initial alignment2



Minimum	-0.4837
Maximum	0.4857
Average	0.028
RMS	0.1923
Standard deviation	0.1902
Dispersion	0.0362
+Average	0.1687
-Average	-0.1452

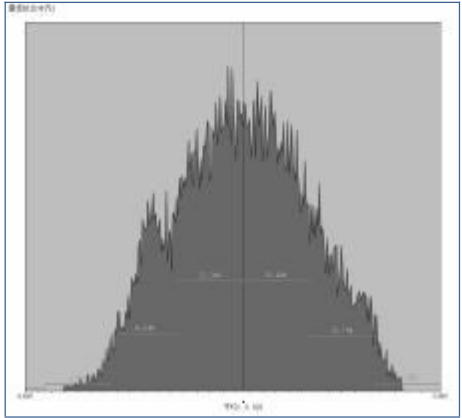
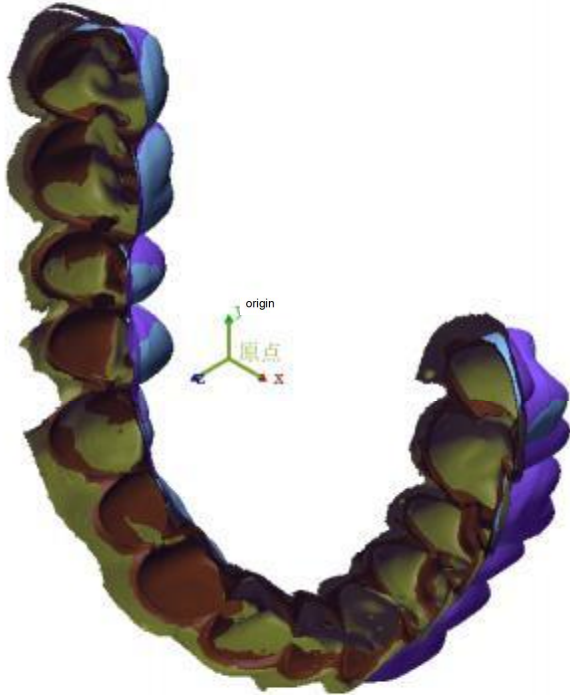
Product Name	[Product Name]
Part Name	[Part Name]

Department	[Department]
Inspector	[Inspector]

Date	Jul 25, 2023
Unit	mm

结果数据 - 1 : 最佳拟合对齐2

Results data-1:Best-fit alignment2



Minimum	-0.4837
Maximum	0.4857
Average	0.028
RMS	0.1923
Standard deviation	0.1902
Dispersion	0.0362
+Average	0.1687
-Average	-0.1452

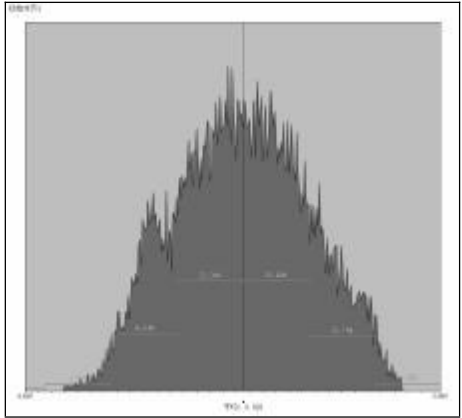
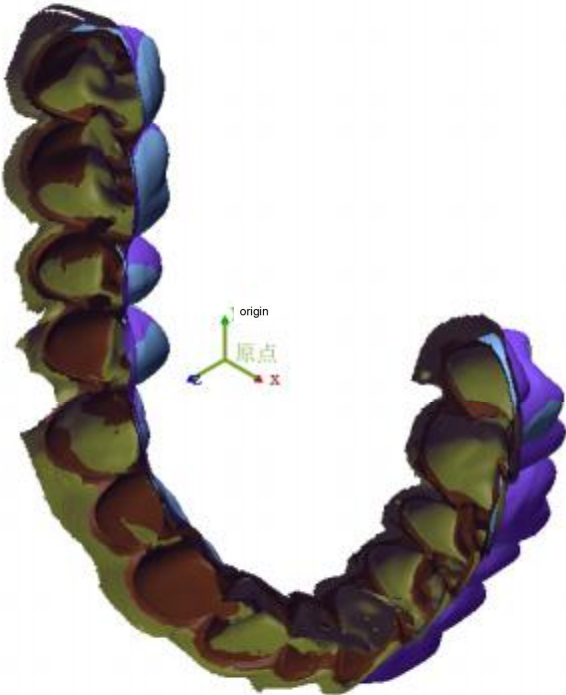
Product Name	[Product Name]
Part Name	[Part Name]

Department	[Department]
Inspector	[Inspector]

Date	Jul 25, 2023
Unit	mm

结果数据 - 1 : 初始对齐3

Results data-1:Initial alignment3



Minimum	-0.4837
Maximum	0.4857
Average	0.028
RMS	0.1923
Standard deviation	0.1902
Dispersion	0.0362
+Average	0.1687
-Average	-0.1452

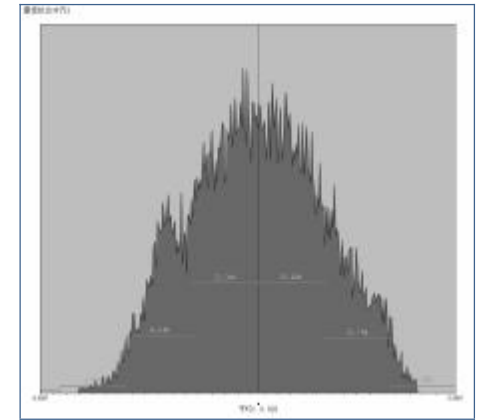
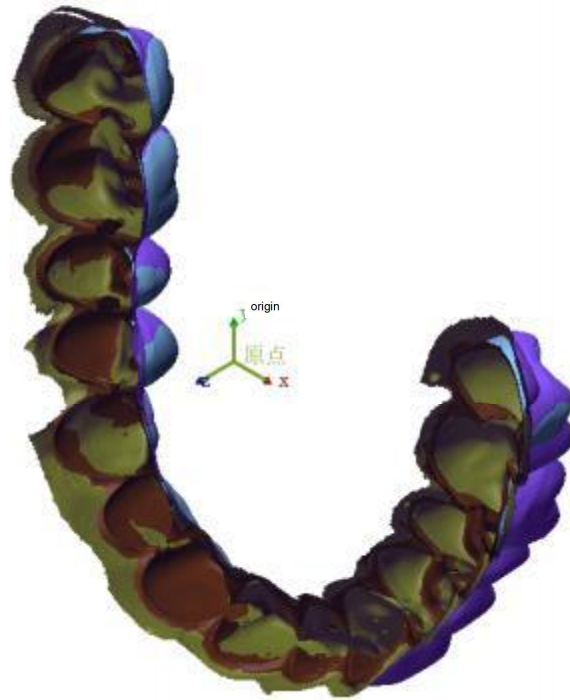
Product Name	[Product Name]
Part Name	[Part Name]

Department	[Department]
Inspector	[Inspector]

Date	Jul 25, 2023
Unit	mm

结果数据 - 1 : 最佳拟合对齐3

Results data-1:Best-fit alignment3



Minimum	-0.4837
Maximum	0.4857
Average	0.028
RMS	0.1923
Standard deviation	0.1902
Dispersion	0.0362
+Average	0.1687
-Average	-0.1452

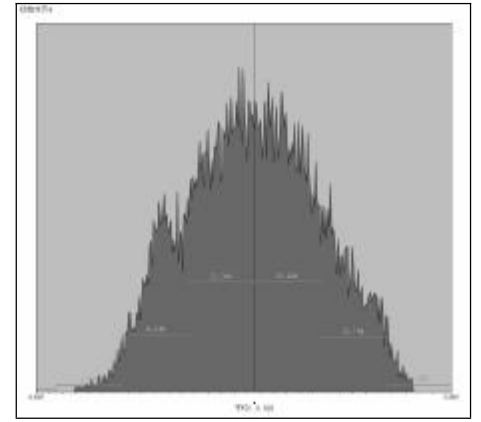
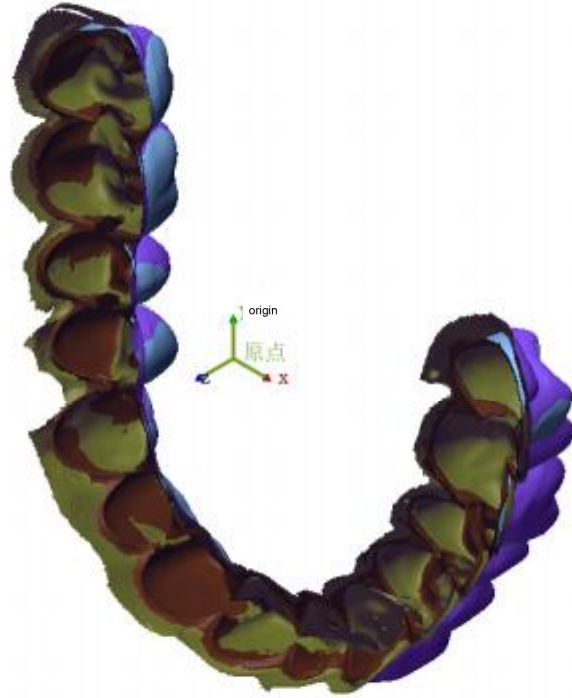
Product Name	[Product Name]
Part Name	[Part Name]

Department	[Department]
Inspector	[Inspector]

Date	Jul 25, 2023
Unit	mm

结果数据 - 1 : 初始对齐4

Results data-1:Initial alignment4



Minimum	-0.4837
Maximum	0.4857
Average	0.028
RMS	0.1923
Standard deviation	0.1902
Dispersion	0.0362
+Average	0.1687
-Average	-0.1452

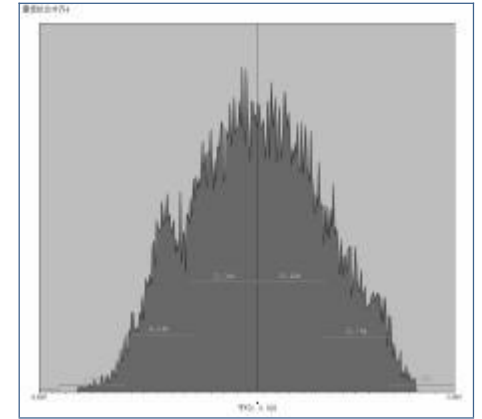
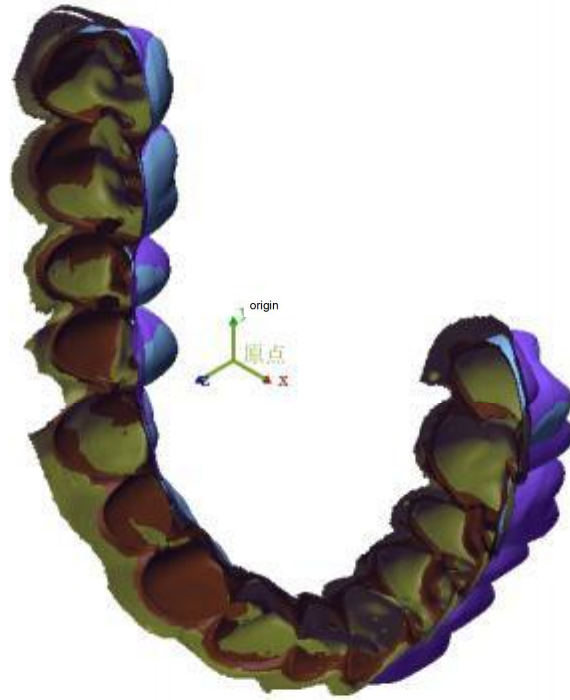
Product Name	[Product Name]
Part Name	[Part Name]

Department	[Department]
Inspector	[Inspector]

Date	Jul 25, 2023
Unit	mm

结果数据 - 1 : 最佳拟合对齐4

Results data-1:Best-fit alignment4



Minimum	-0.4837
Maximum	0.4857
Average	0.028
RMS	0.1923
Standard deviation	0.1902
Dispersion	0.0362
+Average	0.1687
-Average	-0.1452

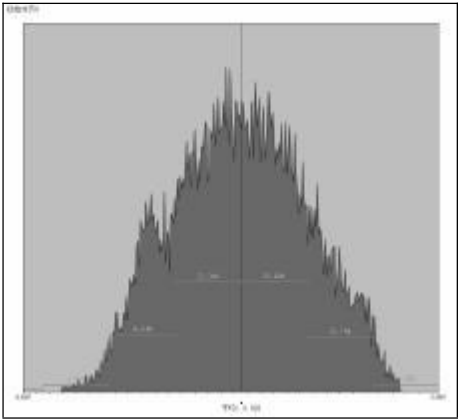
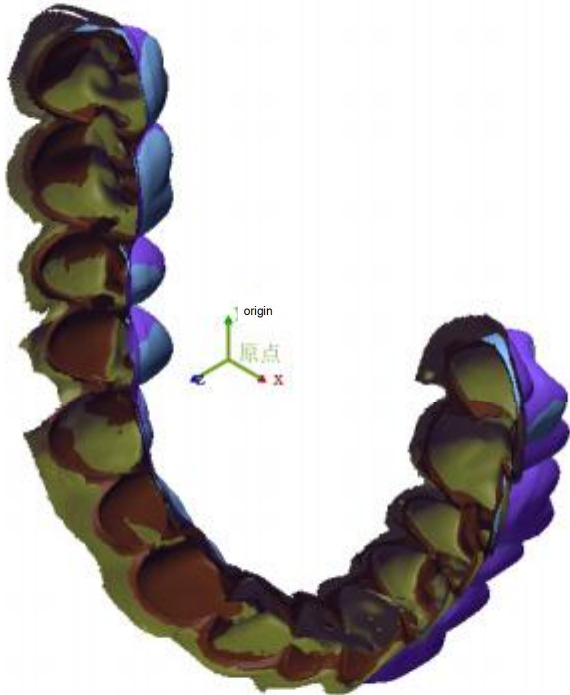
Product Name	[Product Name]
Part Name	[Part Name]

Department	[Department]
Inspector	[Inspector]

Date	Jul 25, 2023
Unit	mm

结果数据 - 1 : 初始对齐5

Results data-1:Initial alignment5



Minimum	-0.4837
Maximum	0.4857
Average	0.028
RMS	0.1923
Standard deviation	0.1902
Dispersion	0.0362
+Average	0.1687
-Average	-0.1452

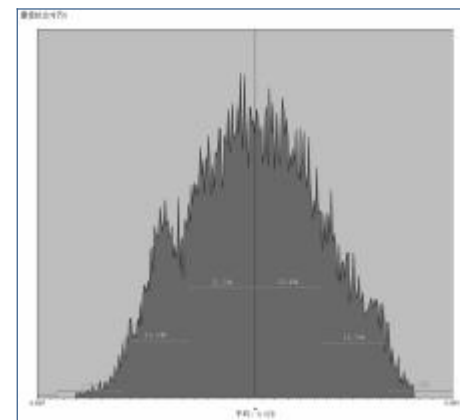
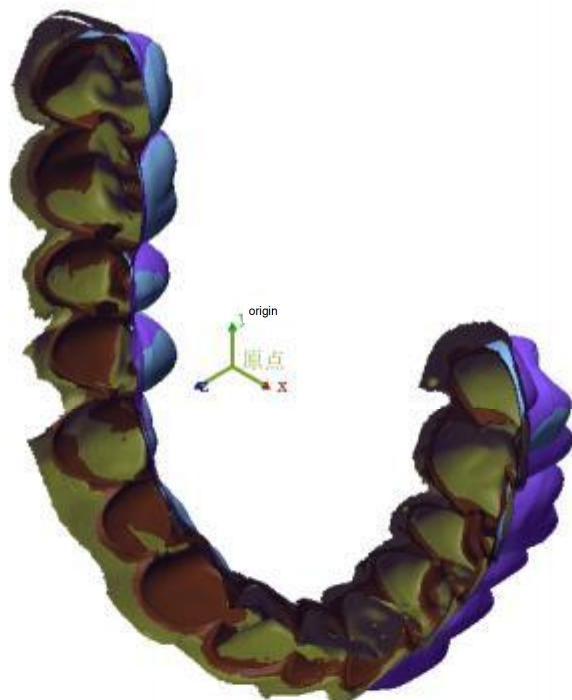
Product Name	[Product Name]
Part Name	[Part Name]

Department	[Department]
Inspector	[Inspector]

Date	Jul 25, 2023
Unit	mm

结果数据 - 1 : 最佳拟合对齐5

Results data-1:Best-fit alignment5



Minimum	-0.4837
Maximum	0.4857
Average	0.028
RMS	0.1923
Standard deviation	0.1902
Dispersion	0.0362
+ Average	0.1687
- Average	-0.1452

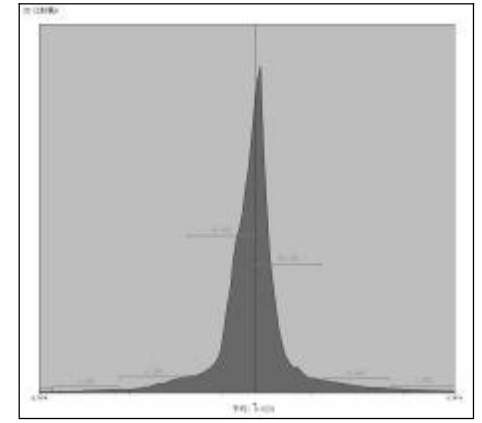
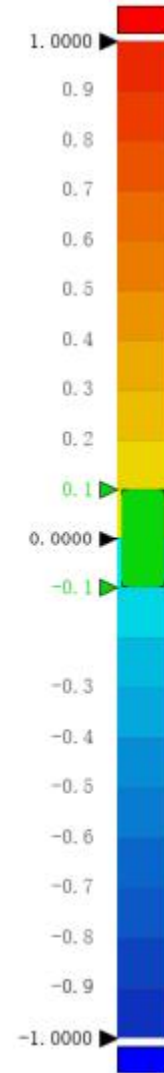
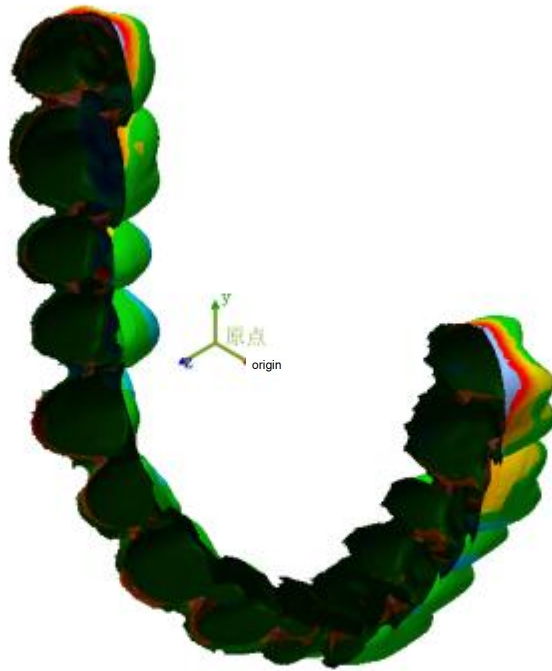
Product Name	[Product Name]
Part Name	[Part Name]

Department	[Department]
Inspector	[Inspector]

Date	Jul 25, 2023
Unit	mm

结果数据 - 1 : 3D 比较氯6

Results data-1:3D compare Effective chlorine spray6



Minimum	-1.3848
Maximum	1.3852
Average	0.0231
RMS	0.2425
Standard deviation	0.2414
Dispersion	0.0583
+Average	0.1264
-Average	-0.1236
Within Tolerance(%)	72.0998
Out Of Tolerance(%)	27.9002
Above Tolerance(%)	15.5751
Below Tolerance(%)	12.3251

Product Name	[Product Name]
Part Name	[Part Name]

Department	[Department]
Inspector	[Inspector]

Date	Jul 25, 2023
Unit	mm

Name	Minimum	Maximum	Average	RMS	Standard deviation	Dispersion	+Average	-Average
3D compare Effective chlorine spray6	-1.3848	1.3852	0.0231	0.2425	0.2414	0.0583	0.1264	-0.1236

Product Name	[Product Name]
--------------	----------------

Department	[Department]
------------	--------------

Date	Jul 25, 2023
------	--------------

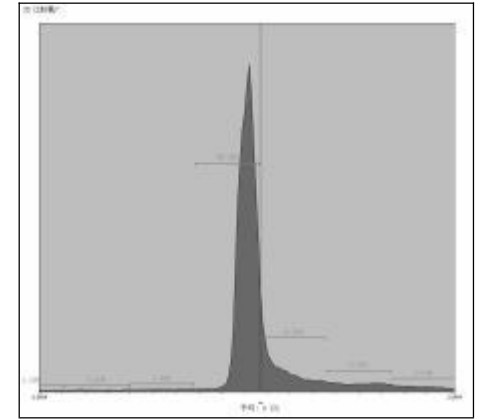
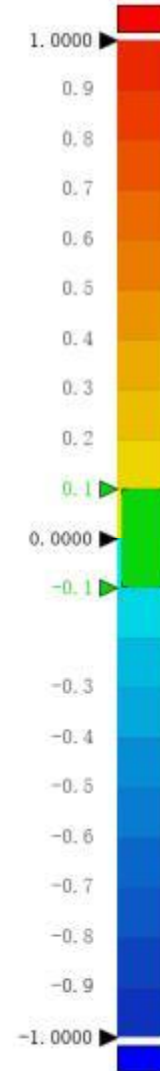
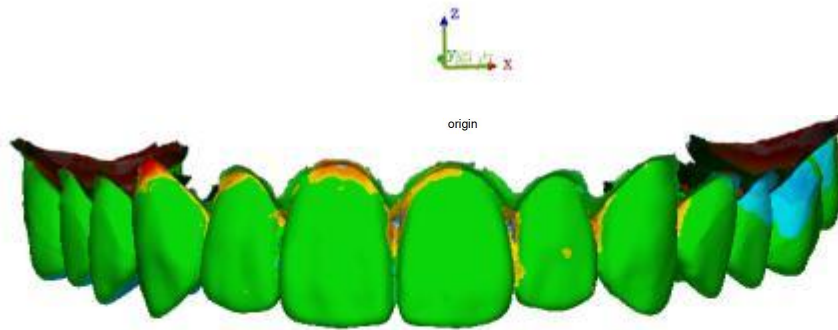
Inspector	[Inspector]
-----------	-------------

Unit	mm
------	----

Part Name	[Part Name]
-----------	-------------

结果数据 - 1 : 3D 比较氯7

Results data-1:3D compare Effective chlorine spray7



Minimum	-2.8705
Maximum	2.8703
Average	0.121
RMS	0.6577
Standard deviation	0.6465
Dispersion	0.4179
+Average	0.3969
-Average	-0.2467
Within Tolerance.(%)	56.0773
Out Of Tolerance(%)	43.9227
Above Tolerance(%)	29.4427
Below Tolerance(%)	14.48

Product Name	[Product Name]
Part Name	[Part Name]

Department	[Department]
Inspector	[Inspector]

Date	Jul 25, 2023
Unit	mm

Name	Minimum	Maximum	Average	RMS	Standard deviation	Dispersion	+Average	-Average
3D compare Effective chlorine spray7	-2.8705	2.8703	0.121	0.6577	0.6465	0.4179	0.3969	-0.2467

Product Name	[Product Name]
--------------	----------------

Department	[Department]
------------	--------------

Date	Jul 25, 2023
------	--------------

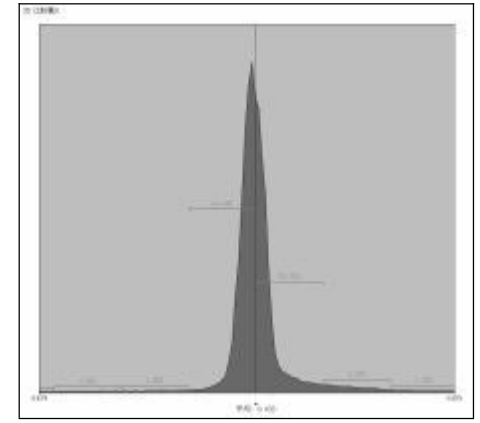
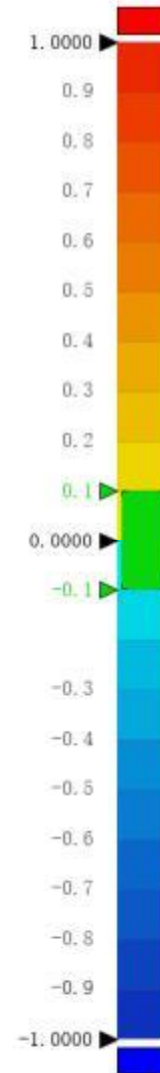
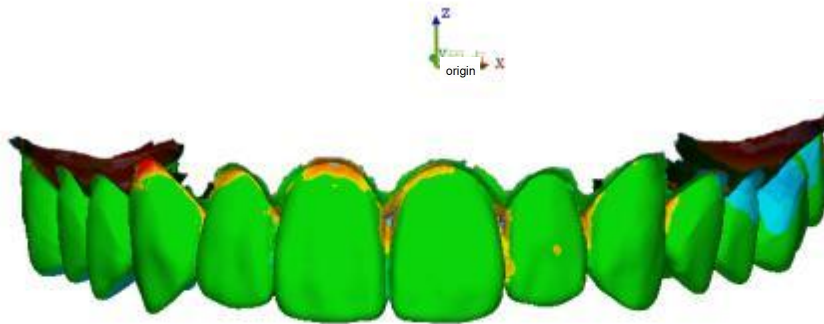
Inspector	[Inspector]
-----------	-------------

Unit	mm
------	----

Part Name	[Part Name]
-----------	-------------

结果数据 - 1 : 3D 比较氯8

Results data-1:3D compare Effective chlorine spray8



Minimum	-1.9033
Maximum	1.904
Average	0.033
RMS	0.3034
Standard deviation	0.3016
Dispersion	0.091
+Average	0.1366
-Average	-0.1293
Within Tolerance(%)	78.657
Out Of Tolerance(%)	21.343
Above Tolerance(%)	14.5378
Below Tolerance(%)	6.8052

Product Name	[Product Name]
Part Name	[Part Name]

Department	[Department]
Inspector	[Inspector]

Date	Jul 25, 2023
Unit	mm

Name	Minimum	Maximum	Average	RMS	Standard deviation	Dispersion	+Average	-Average
3D compare Effective chlorine spray8	-1.9033	1.904	0.033	0.3034	0.3016	0.091	0.1366	-0.1293

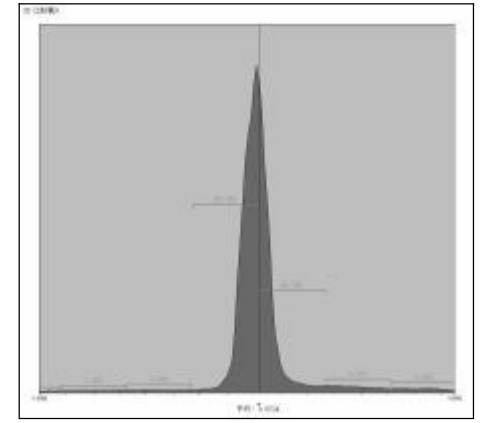
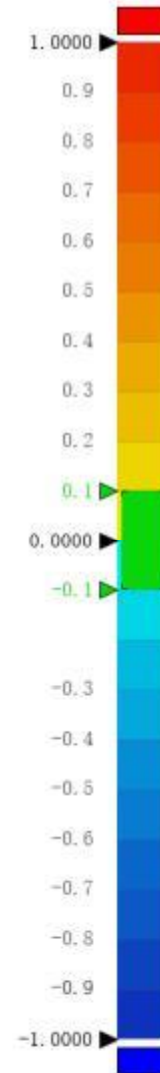
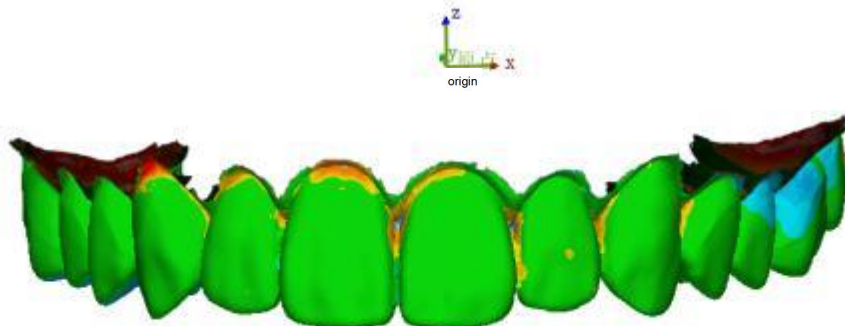
Product Name	[Product Name]
Part Name	[Part Name]

Department	[Department]
Inspector	[Inspector]

Date	Jul 25, 2023
Unit	mm

结果数据 - 1 : 3D 比较氯9

Results data-1:3D compare Effective chlorine spray9



Minimum	-1.7282
Maximum	1.7282
Average	0.0534
RMS	0.3386
Standard deviation	0.3344
Dispersion	0.1118
+Average	0.1591
-Average	-0.1662
Within Tolerance.(%)	73.4786
Out Of Tolerance(%)	26.5214
Above Tolerance(%)	19.3198
Below Tolerance(%)	7.2016

Product Name	[Product Name]
Part Name	[Part Name]

Department	[Department]
Inspector	[Inspector]

Date	Jul 25, 2023
Unit	mm

Name	Minimum	Maximum	Average	RMS	Standard deviation	Dispersion	+Average	-Average
3D compare Effective chlorine spray9	-1.7282	1.7282	0.0534	0.3386	0.3344	0.1118	0.1591	-0.1662

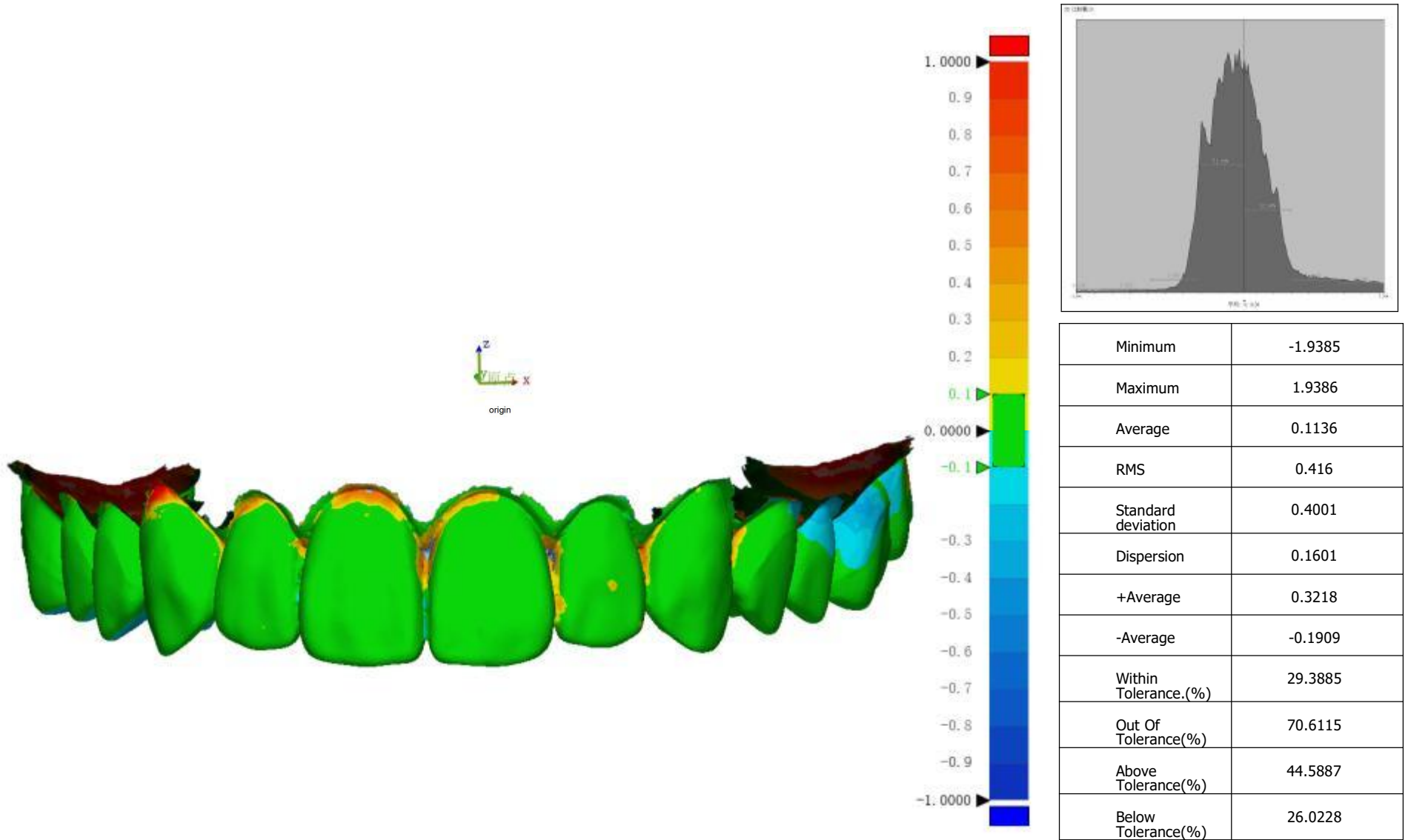
Product Name	[Product Name]
Part Name	[Part Name]

Department	[Department]
Inspector	[Inspector]

Date	Jul 25, 2023
Unit	mm

结果数据 - 1 : 3D 比较氯10

Results data-1:3D compare Effective chlorine spray10



Product Name	[Product Name]
Part Name	[Part Name]

Department	[Department]
Inspector	[Inspector]

Date	Jul 25, 2023
Unit	mm

Name	Minimum	Maximum	Average	RMS	Standard deviation	Dispersion	+Average	-Average
3D compare Effective chlorine spray10	-1.9385	1.9386	0.1136	0.416	0.4001	0.1601	0.3218	-0.1909

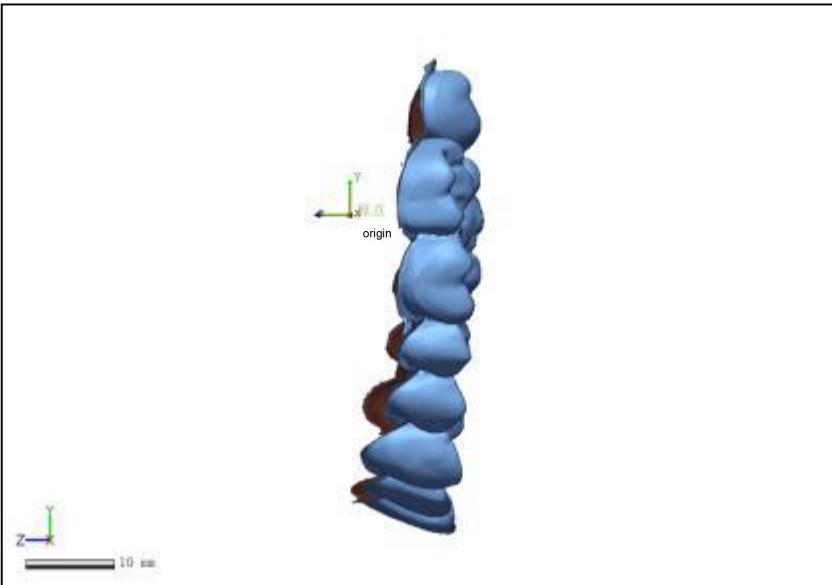
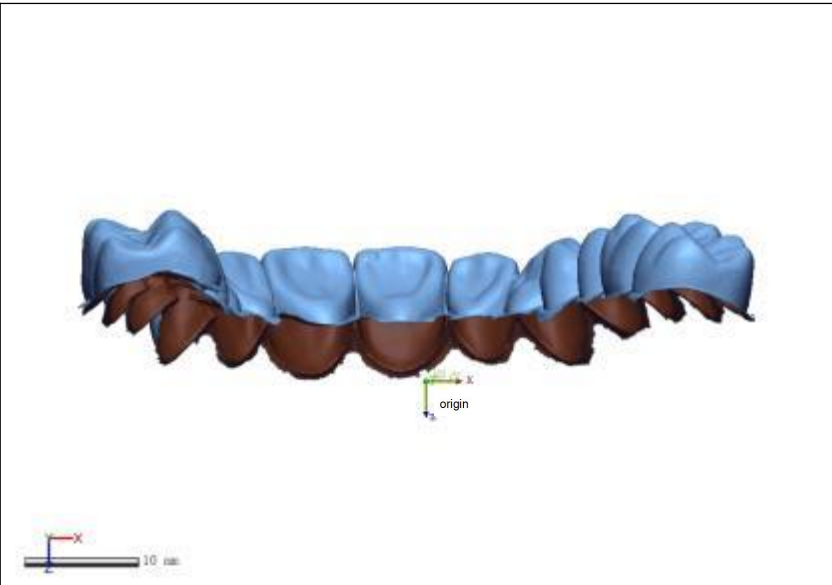
Product Name	[Product Name]
Part Name	[Part Name]

Department	[Department]
Inspector	[Inspector]

Date	Jul 25, 2023
Unit	mm

结果数据 - 1 : 参考数据 - 初始

Results data-1:Reference data-Initial



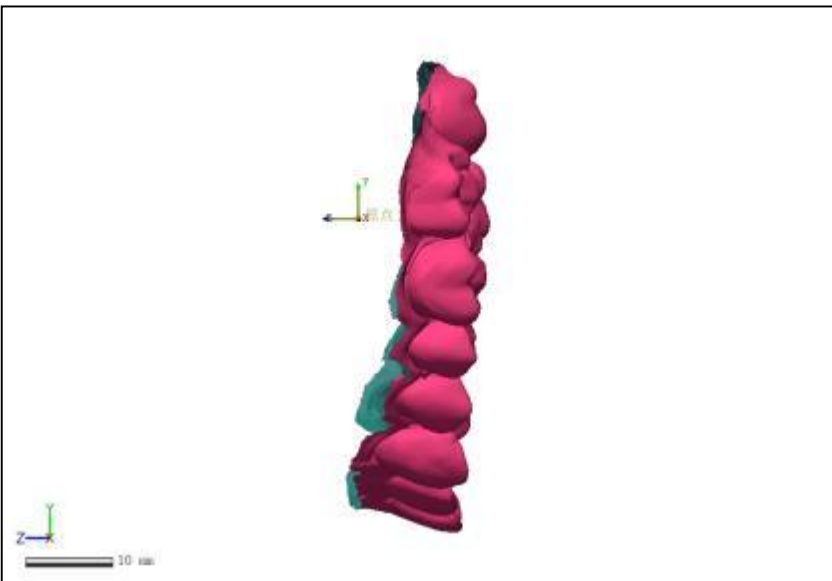
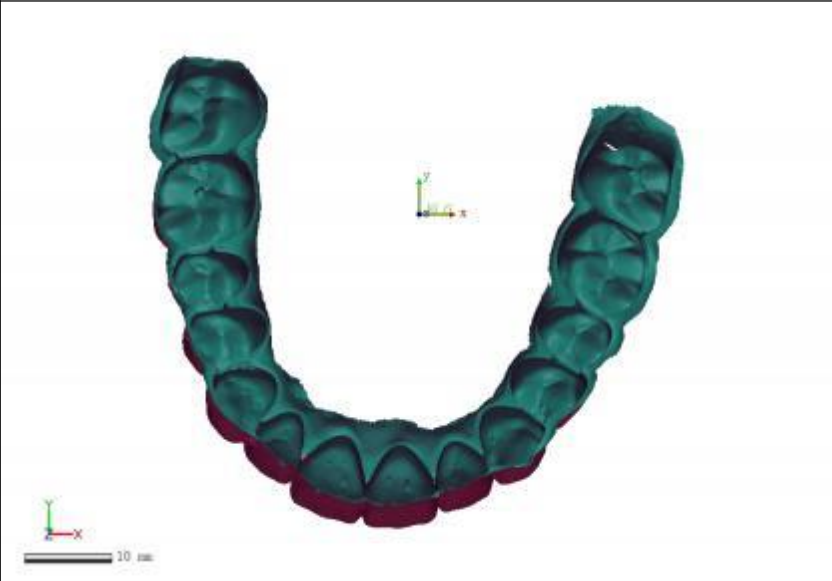
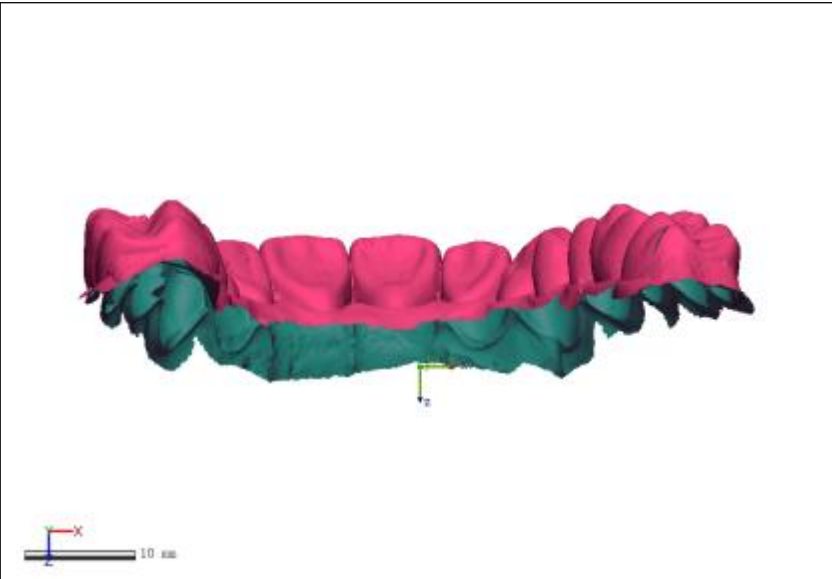
Product Name	[Product Name]
Part Name	[Part Name]

Department	[Department]
Inspector	[Inspector]

Date	Jul 26, 2023
Unit	mm

结果数据 - 1 : 测试数据 - 氯12

Results data-1:Test data- Effective Chlorine12



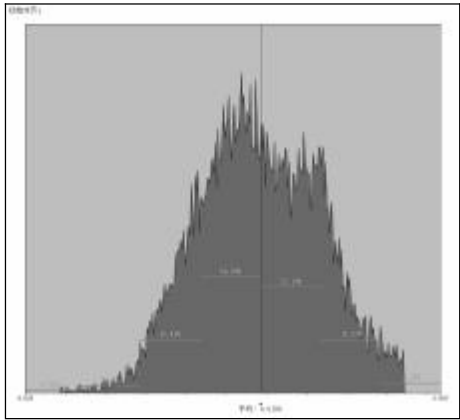
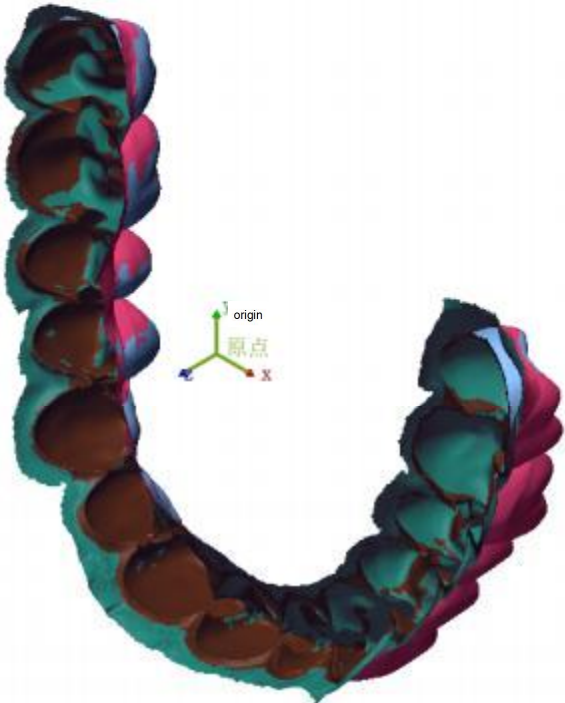
Product Name	[Product Name]
Part Name	[Part Name]

Department	[Department]
Inspector	[Inspector]

Date	Jul 26, 2023
Unit	mm

结果数据 - 1 : 初始对齐1

Results data-1:Initial alignment1



Minimum	-0.1253
Maximum	0.1255
Average	0.0199
RMS	0.0485
Standard deviation	0.0442
Dispersion	0.002
+Average	0.045
-Average	-0.028

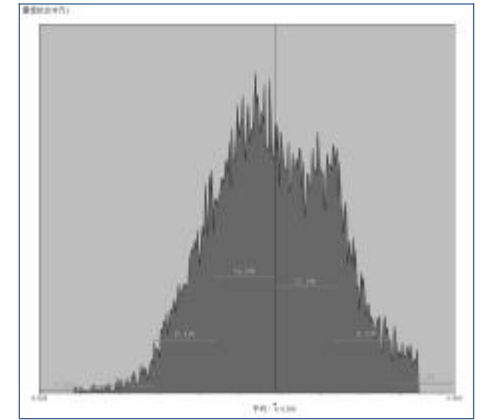
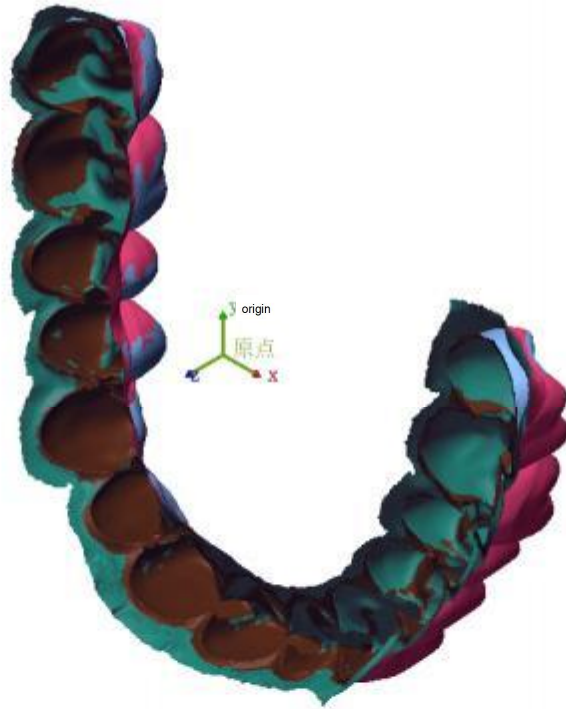
Product Name	[Product Name]
Part Name	[Part Name]

Department	[Department]
Inspector	[Inspector]

Date	Jul 26, 2023
Unit	mm

结果数据 - 1 : 最佳拟合对齐1

Results data-1:Best-fit alignment1



Minimum	-0.1253
Maximum	0.1255
Average	0.0199
RMS	0.0485
Standard deviation	0.0442
Dispersion	0.002
+Average	0.045
-Average	-0.028

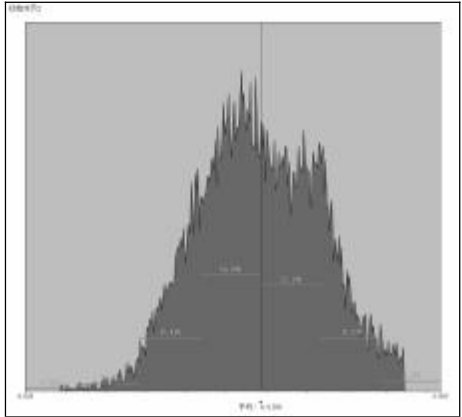
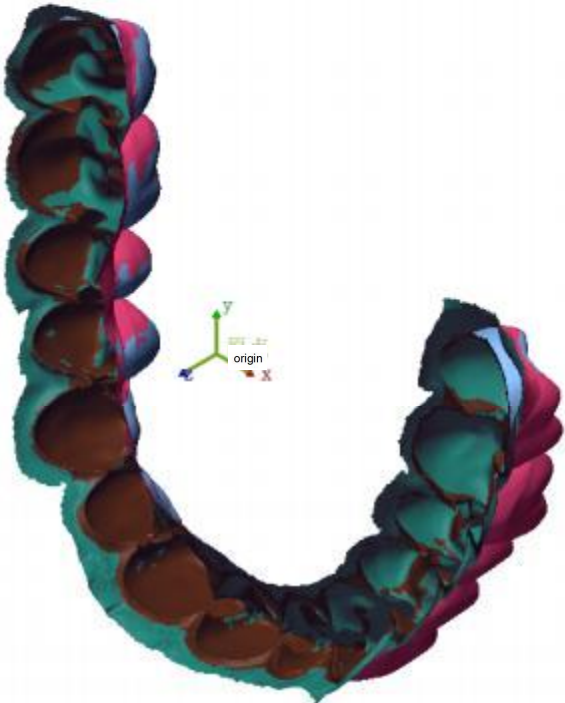
Product Name	[Product Name]
Part Name	[Part Name]

Department	[Department]
Inspector	[Inspector]

Date	Jul 26, 2023
Unit	mm

结果数据 - 1 : 初始对齐2

Results data-1:Initial alignment2



Minimum	-0.1253
Maximum	0.1255
Average	0.0199
RMS	0.0485
Standard deviation	0.0442
Dispersion	0.002
+Average	0.045
-Average	-0.028

Product Name	[Product Name]
Part Name	[Part Name]

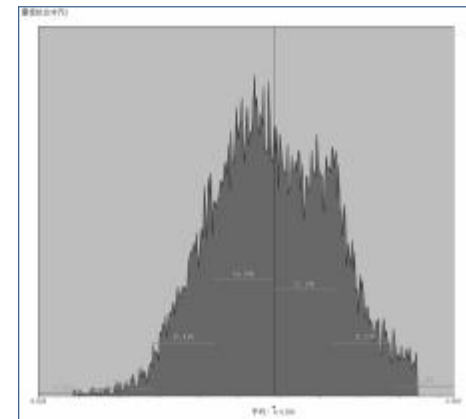
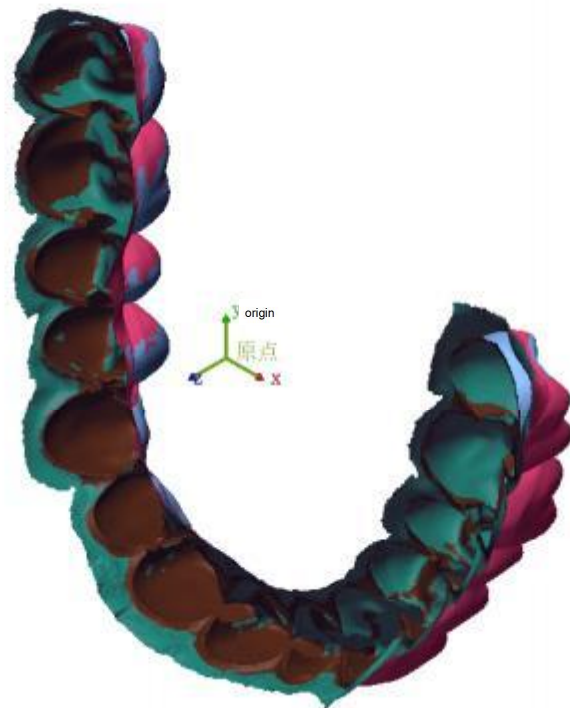
Department	[Department]
Inspector	[Inspector]

Date	Jul 26, 2023
------	--------------

Unit	mm
------	----

结果数据 - 1 : 最佳拟合对齐

Results data-1:Best-fit alignment2



Minimum	-0.1253
Maximum	0.1255
Average	0.0199
RMS	0.0485
Standard deviation	0.0442
Dispersion	0.002
+Average	0.045
-Average	-0.028

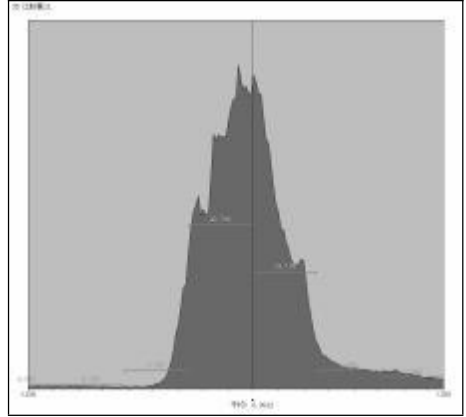
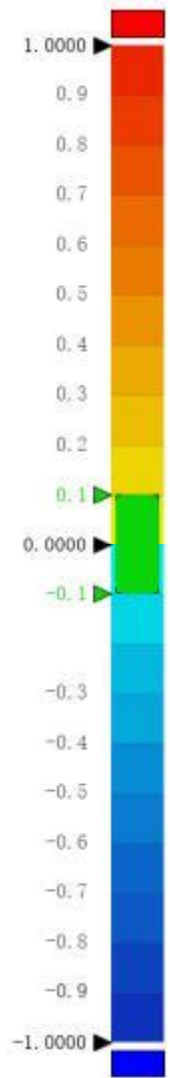
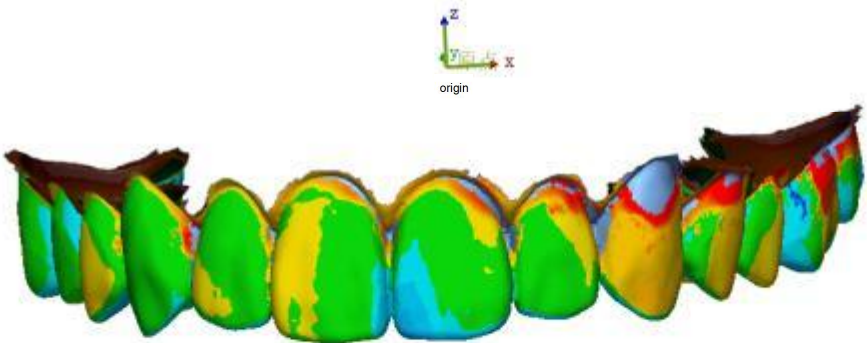
Product Name	[Product Name]
Part Name	[Part Name]

Department	[Department]
Inspector	[Inspector]

Date	Jul 26, 2023
Unit	mm

结果数据 - 1 : 3D 比较氯11

Results data-1:3D compare Effective chlorine spray11



Minimum	-1.8804
Maximum	1.8805
Average	0.0912
RMS	0.3901
Standard deviation	0.3793
Dispersion	0.1439
+Average	0.291
-Average	-0.1997
Within Tolerance(%)	30.8763
Out Of Tolerance(%)	69.1237
Above Tolerance(%)	42.8995
Below Tolerance(%)	26.2242

Product Name	[Product Name]
Part Name	[Part Name]

Department	[Department]
Inspector	[Inspector]

Date	Jul 26, 2023
------	--------------

Unit	mm
------	----

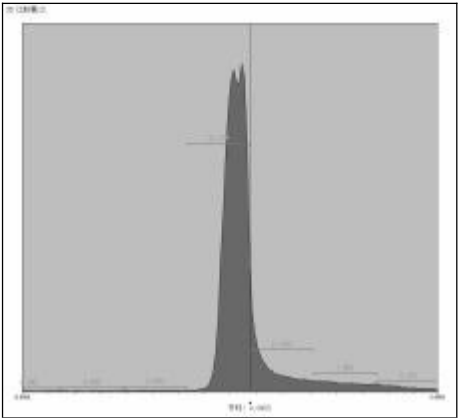
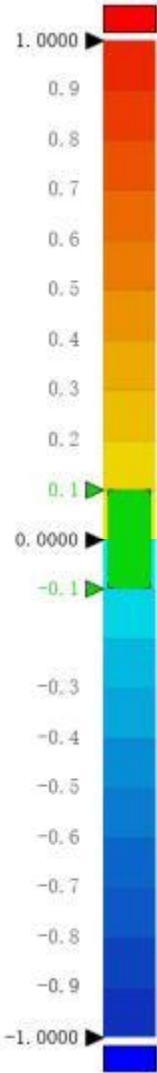
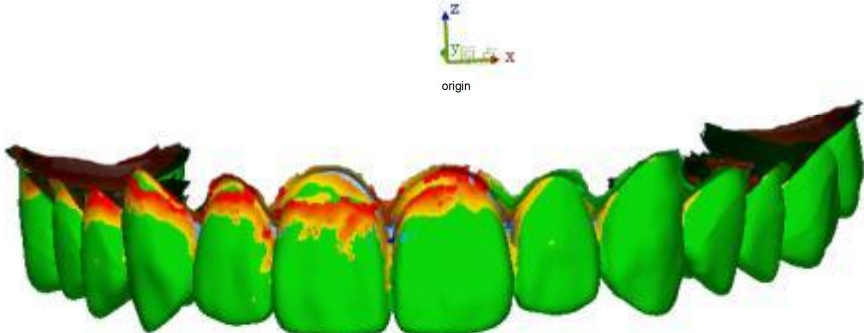
Name	Minimum	Maximum	Average	RMS	Standard deviation	Dispersion	+Average	-Average
3D compare Effective chlorine spray11	-1.8804	1.8805	0.0912	0.3901	0.3793	0.1439	0.291	-0.1997

Product Name	[Product Name]
Part Name	[Part Name]

Department	[Department]
Inspector	[Inspector]

Date	Jul 26, 2023
Unit	mm

结果数据 - 1 : 3D 比较氯12



Minimum	-1.5698
Maximum	1.5705
Average	0.0903
RMS	0.3122
Standard deviation	0.2989
Dispersion	0.0893
+Average	0.1779
-Average	-0.092
Within Tolerance(%)	75.8311
Out Of Tolerance(%)	24.1689
Above Tolerance(%)	20.8004
Below Tolerance(%)	3.3684

Product Name	[Product Name]
Part Name	[Part Name]

Department	[Department]
Inspector	[Inspector]

Date	Jul 26, 2023
Unit	mm

Name	Minimum	Maximum	Average	RMS	Standard deviation	Dispersion	+Average	-Average
3D compare Effective chlorine spray12	-1.5698	1.5705	0.0903	0.3122	0.2989	0.0893	0.1779	-0.092

Product Name	[Product Name]
Part Name	[Part Name]

Department	[Department]
Inspector	[Inspector]

Date	Jul 26, 2023
Unit	mm