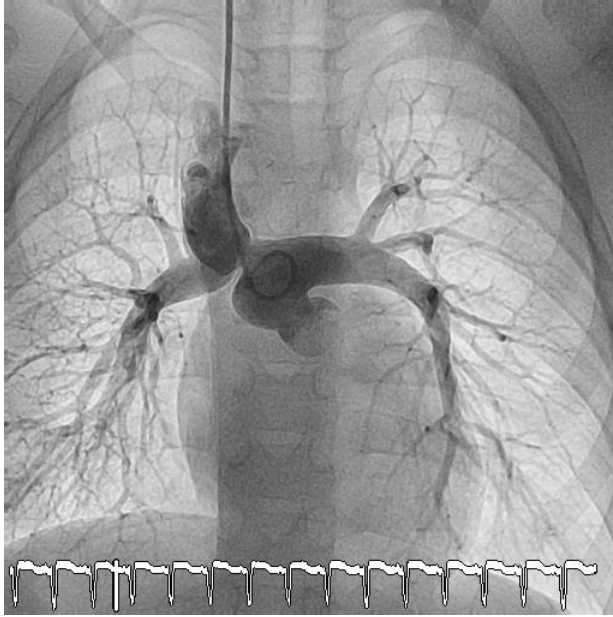


Hemodynamic outcomes of patient undergoing bidirectional Glenn operation with additional antegrade pulmonary blood flow



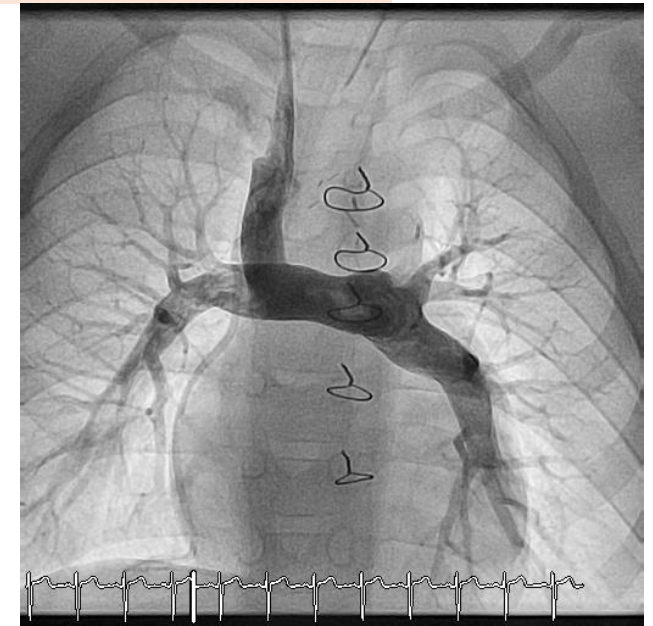
BCPC with APBF

Methods: Single center, retrospective review 167 patients who underwent BCPC between 2006 to 2022.

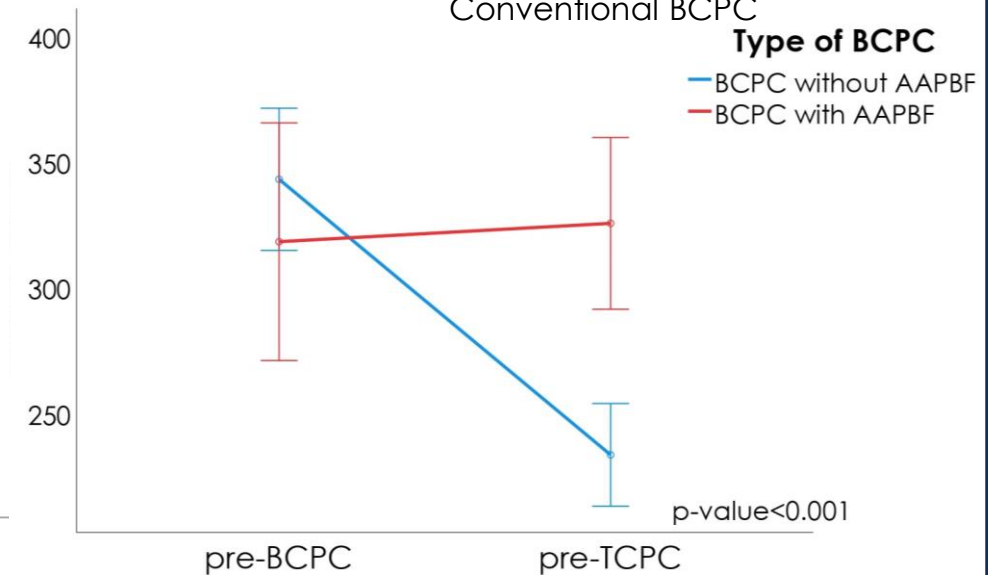
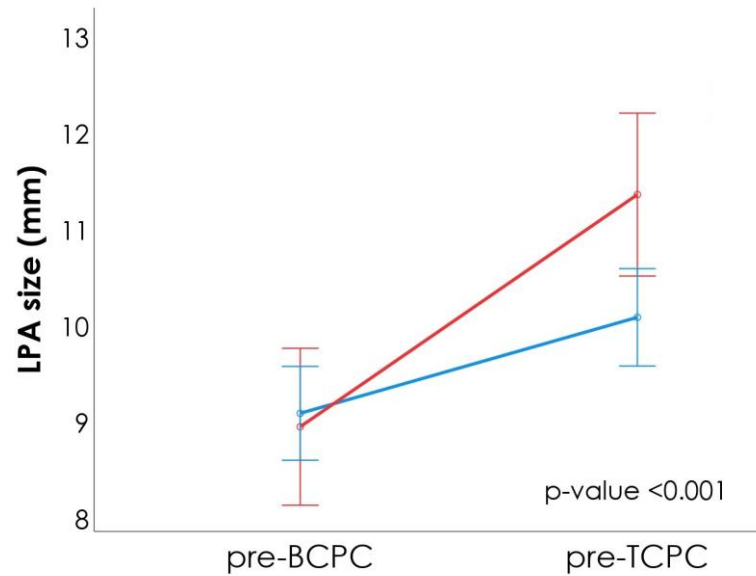
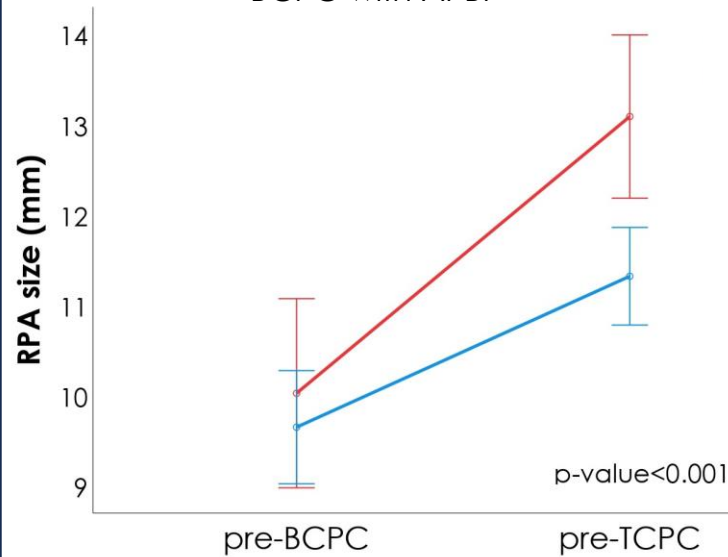
- BCPC (n=123)
- BCPC with AAPBF (n=44)



- AAPBF provided **significant** growth of both pulmonary artery branches and prevent negative remodeling of the McGoon ratio and Nakata index.
- AAPBF **did not impact** on mean pulmonary artery pressure, ventricular end diastolic pressure, pulmonary vascular resistance index and survival.



Conventional BCPC



*BCPC: bidirectional cavopulmonary connection; TCPC: total cavopulmonary connection; AAPBF: additional or antegrade pulmonary blood flow; RPA: right pulmonary artery; LPA: left pulmonary artery